

1001 FULTON

PRIME FULTON MARKET RETAIL
OPPORTUNITY

SWC FULTON & MORGAN

ADJACENT TO

GOOGLE MIDWEST HEADQUARTERS
ACE HOTEL, AVIARY, ROISTER, NEXT
AND THE MORGAN CTA STOP

IMMEDIATE OCCUPANCY

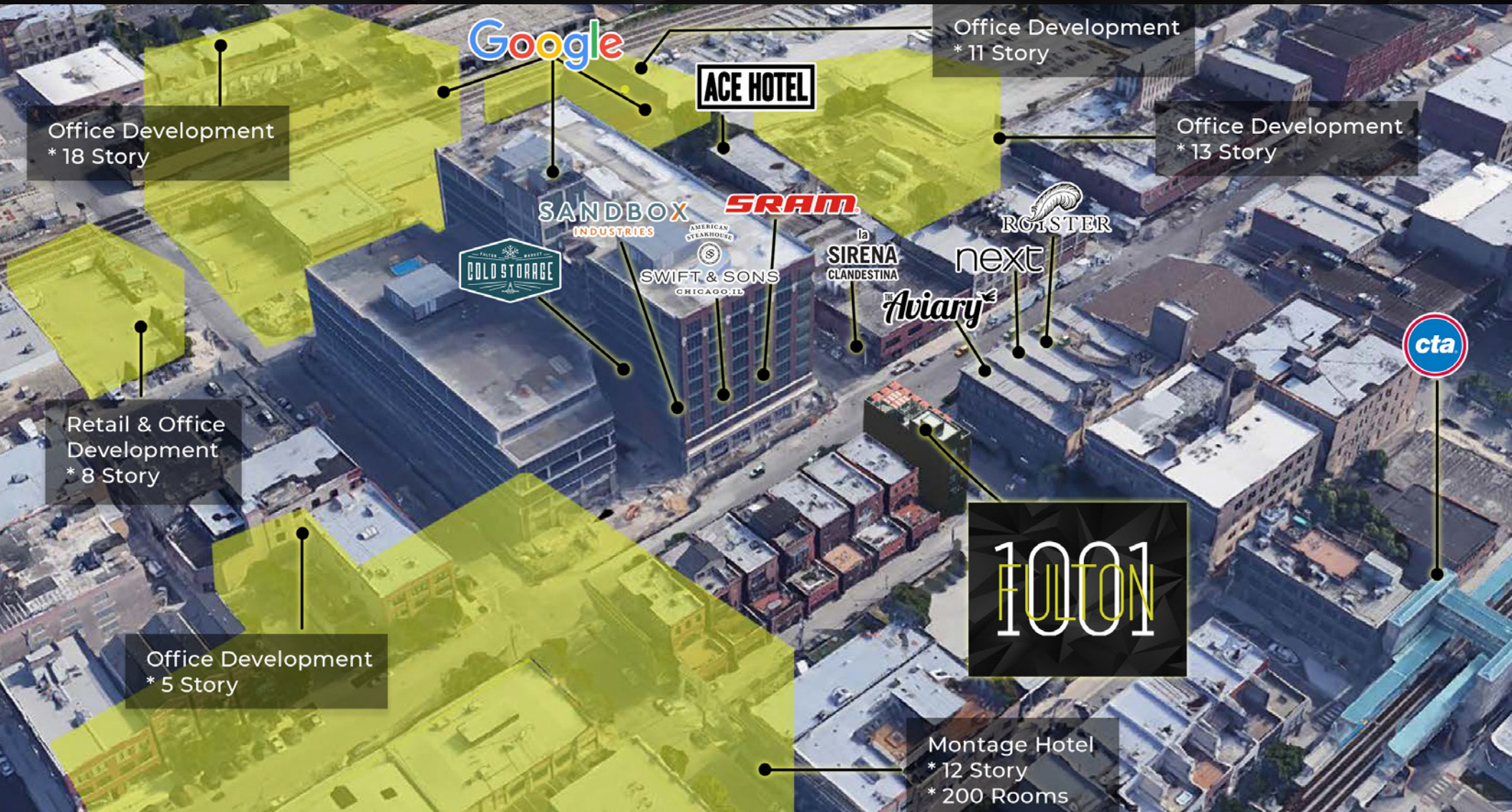
A·R·C
REAL ESTATE

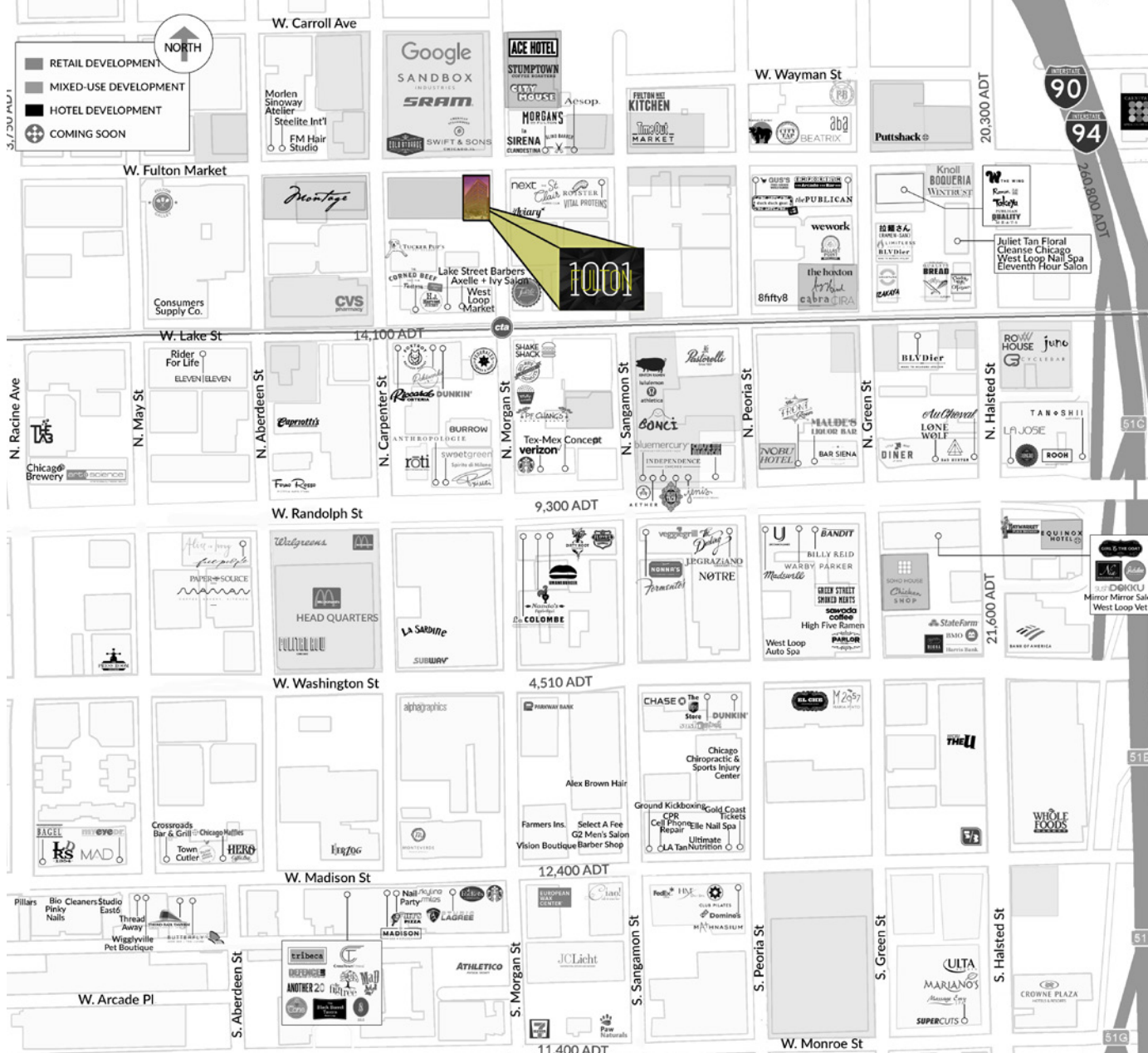


GROUND FLOOR / LOWER LEVEL RETAIL / RESTAURANT READY SPACE

1001 W. FULTON MARKET, CHICAGO, IL - WEST LOOP / FULTON MARKET DISTRICT

- New 5-story mixed-use building in the heart of Fulton Market District
- Ground Floor (2,402 sf), Lower Level (2,735 sf) + significant patio seating opportunity on Fulton & Morgan Street
- Steps from Morgan Street Green/Pink line CTA train AND ADJACENT TO Google, SRAM, Ace Hotel, Herman Miller, Swift & Sons, Roister Next and The Aviary
- 5.5 Million SF of office space north of Fulton Market with over 2.8 Million SF of office space between Fulton and Lake Street alone
- Existing black iron | underground plumbing | 1,000 amp electric | HVAC | Lacantina bi-folding windows + in unit elevator servicing lower level + first floor





FULTON MARKET DISTRICT HIGHLIGHTS

OFFICE TENANTS

- Google 1,300,000 SF
- McDonald's HQ 600,000 SF
- WeWork 294,000 SF
- WPP 253,000 SF
- SRAM 75,000 SF
- Glassdoor 65,000 SF
- CH Robinson 51,800 SF
- Aspen Dental 50,986 SF
- Dyson 40,896 SF
- Ernst & Young 40,000 SF
- Industrious 40,000 SF
- Spaces 39,723 SF
- Skender Construction 30,000 SF
- Knoll 24,000 SF
- Leopardo Construction 24,000 SF
- Climate Corp. 21,118 SF
- Twitter 16,000 SF
- Coca Cola 7,400 SF

HOTELS

- Montage Hotel / 200 Rooms / 0.1 Miles
- ACE Hotel / 159 Rooms / 0.1 Miles
- Dream Hotel / 187 Rooms / 0.2 Miles
- Hoxton Hotel / 175 Rooms / 0.2 Miles
- 920 W. Lake / 200 Rooms / 0.2 Miles
- 310 Peoria / 28 Rooms / 0.2 Miles
- 800 W. Lake / 200 Rooms / 0.3 Miles
- Nobu Hotel / 83 Rooms / 0.4 Miles
- Hyatt House / 200 Rooms / 0.4 Miles
- Publishing House / 119 Rooms / 0.4 Miles
- Standard Hotel / 290 Rooms / 0.5 Miles



OFFICE SPACE
5.5 Million SF
 North of Fulton Market
2.8 Million SF

in between Fulton & Lake St



NEW RESIDENTIAL UNITS IN 2018
4,902



AVERAGE HOUSEHOLD INCOME
\$158,193

within 1/2 Mile

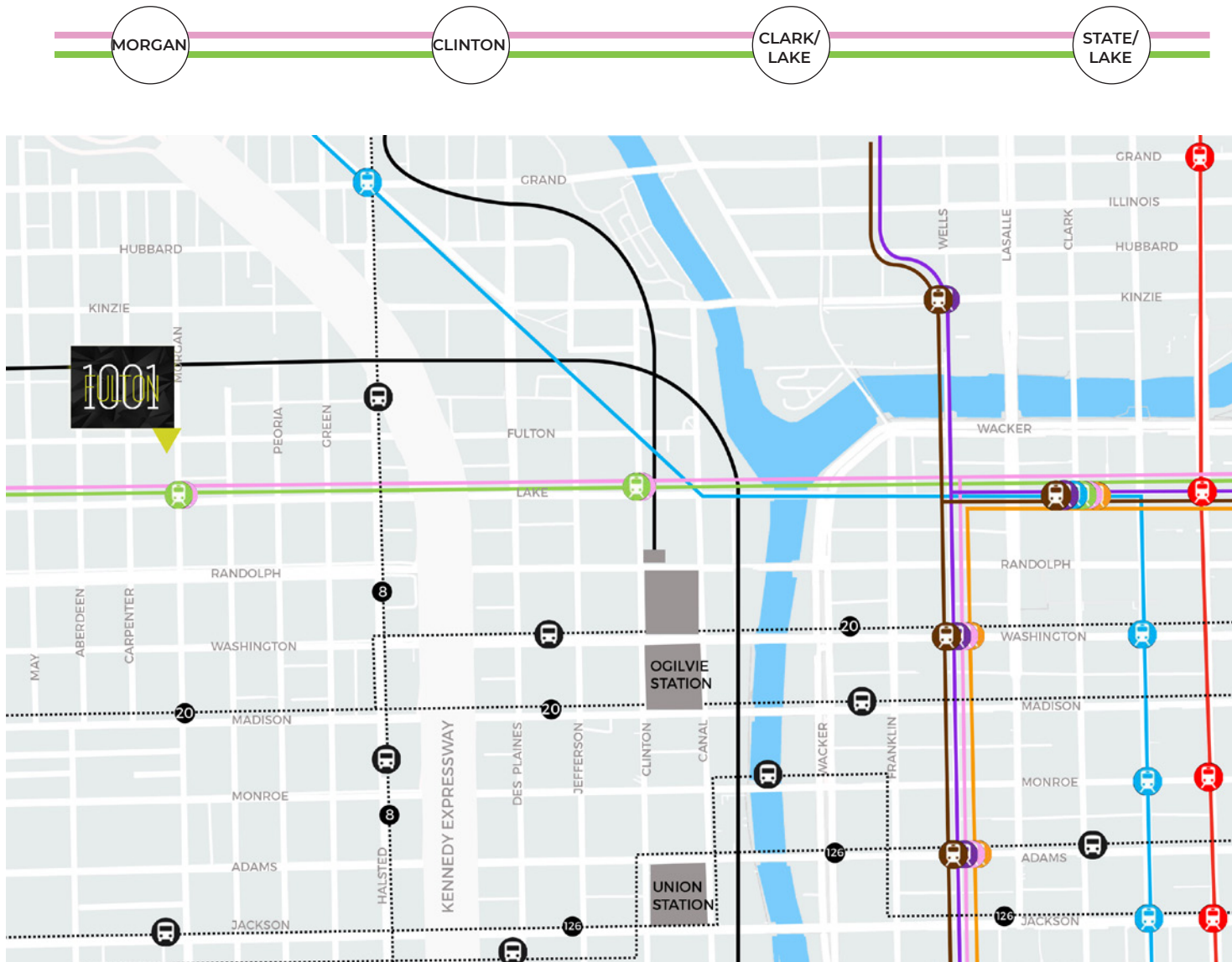


ANNUAL RIDERSHIP
800,000+

At Lake & Morgan
 "L" Stop

FULTON MARKET / WEST LOOP TRANSPORTATION MAP

1001 W. FULTON MARKET, CHICAGO, IL - WEST LOOP / FULTON MARKET DISTRICT



EAT / DRINK

Restaurants / Bars

- Swift & Sons
- Duck Duck Goat
- Next & The Aviary
- TimeOut Market
- ABA
- The Publican

WORK

Office Developments

- Google
- Mondelez International
- McDonalds HQ's
- WPP
- Vital Proteins
- Aspen Dental

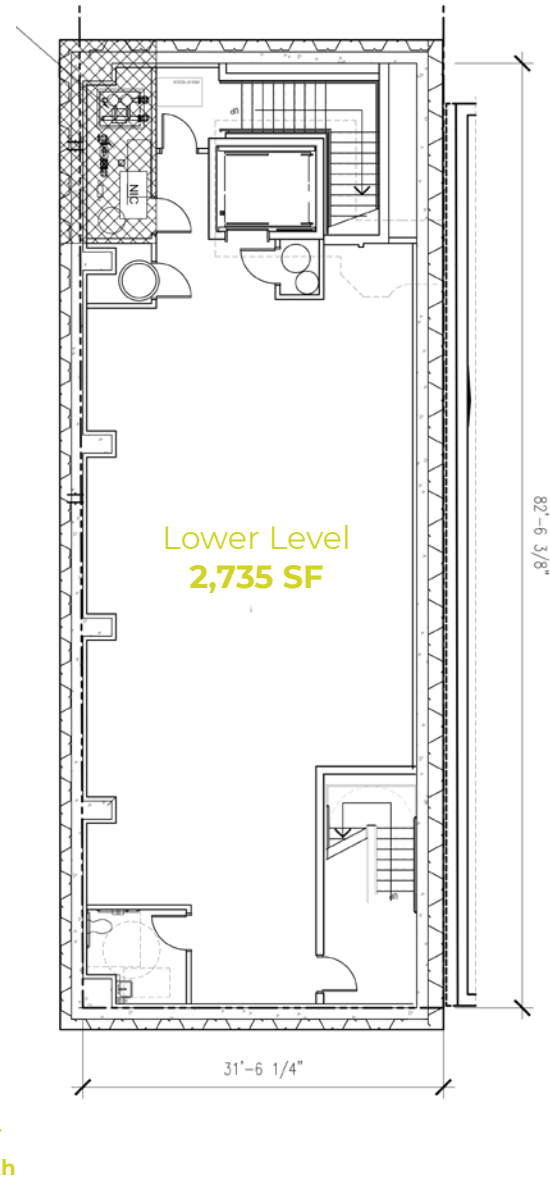
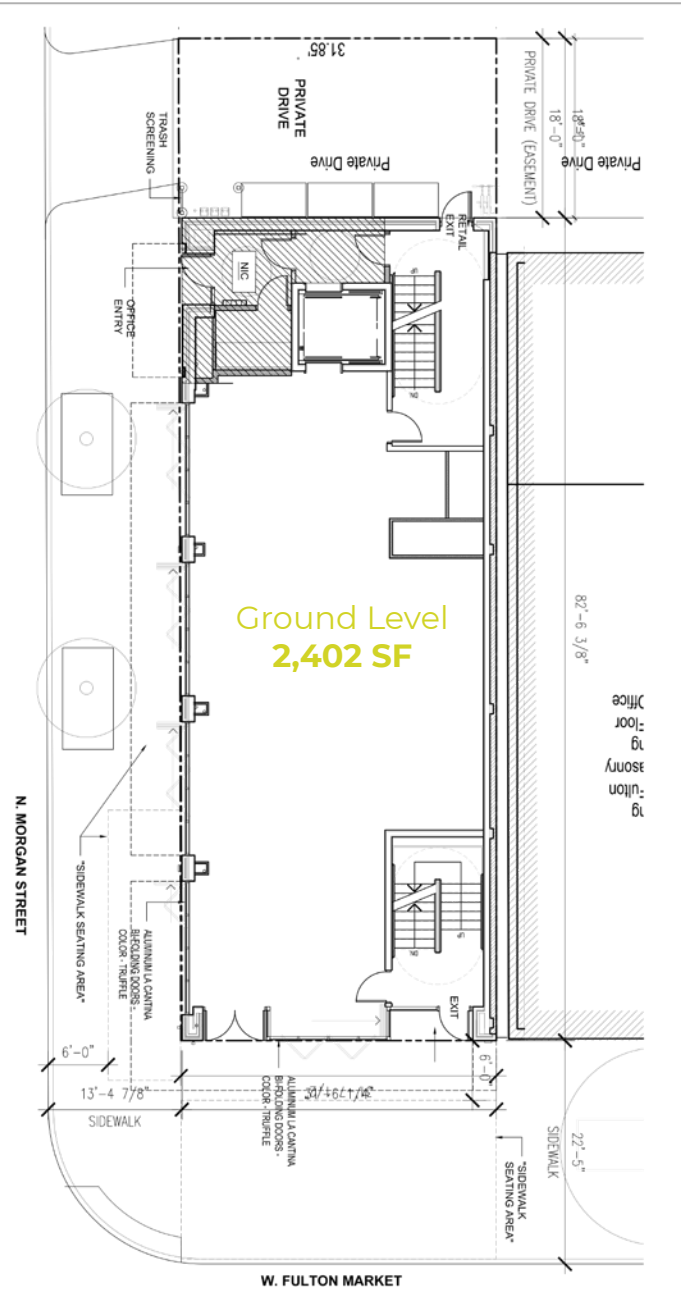
COMMUTE

Commuter Friendly

- Less than 1 block from the new Morgan CTA
- Green/Pink Station
- Less than 1 mile from Ogilvie & Union Stations
- Bike-friendly with over 5 Divy stations within a 4 block radius
- Walking distance to Downtown, CTA Bus Routes, & restaurants/entertainment

GROUND FLOOR and LOWER LEVEL FLOOR PLANS

1001 W. FULTON MARKET, CHICAGO, IL - WEST LOOP / FULTON MARKET DISTRICT



AERIAL VIEW

1001 W. FULTON MARKET, CHICAGO, IL - WEST LOOP / FULTON MARKET DISTRICT



LACANTINA BIFOLDING DOORS/WINDOWS'

1001 W. FULTON MARKET, CHICAGO, IL - WEST LOOP / FULTON MARKET DISTRICT





CONTACT

ANTHONY CAMPAGNI
Managing Principal
ac@arcgrp.com
630.908.5695

ELAN RASANSKY
Principal
elan@arcgrp.com
630.908.5696

© 2020 A•R•C Real Estate. All information is from sources believed reliable, not independently verified, and thus subject to errors, omissions, and modifications such as price, listing, square footage, rates and commissions. All information, estimates and projections subject to change, market assumptions, unknown facts and conditions, and future potentialities. A•R•C Real Estate makes no express or implied representations or warranties, as facts and results may vary materially from all information, estimates and projections. All renderings presented are conceptual.

A•R•C
REAL ESTATE