

# DOCK 72

BROOKLYN  
NAVY YARD

## AVAILABLE SPACE

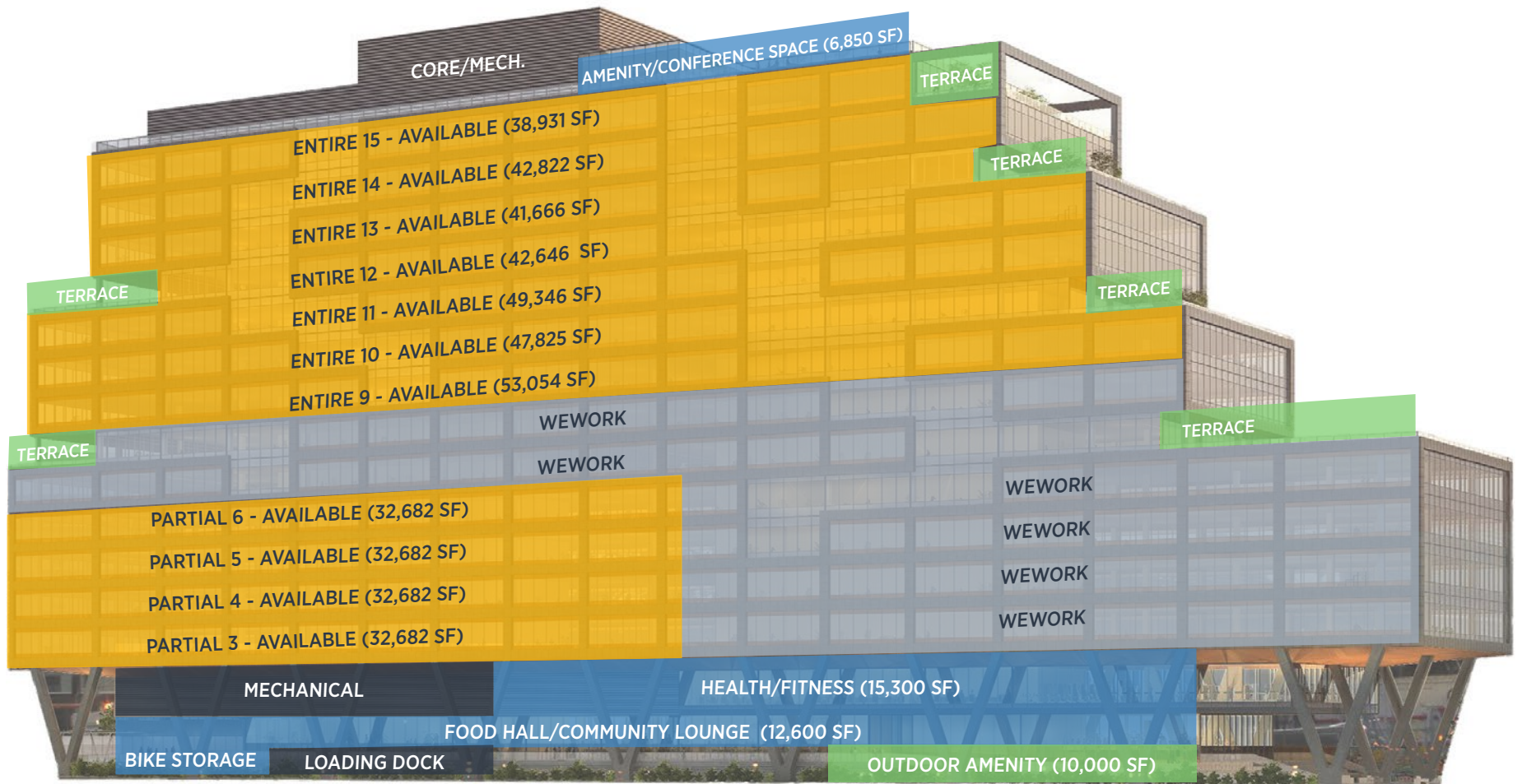
Floor	Available RSF
Entire 15	38,931 RSF
Entire 14	42,822 RSF
Entire 13	41,666 RSF
Entire 12	42,646 RSF
Entire 11	49,346 RSF
Entire 10	47,825 RSF
Entire 9	53,054 RSF
Partial 3-6	32,682 RSF EACH



For additional details, visit  
[www.dock72.com](http://www.dock72.com)

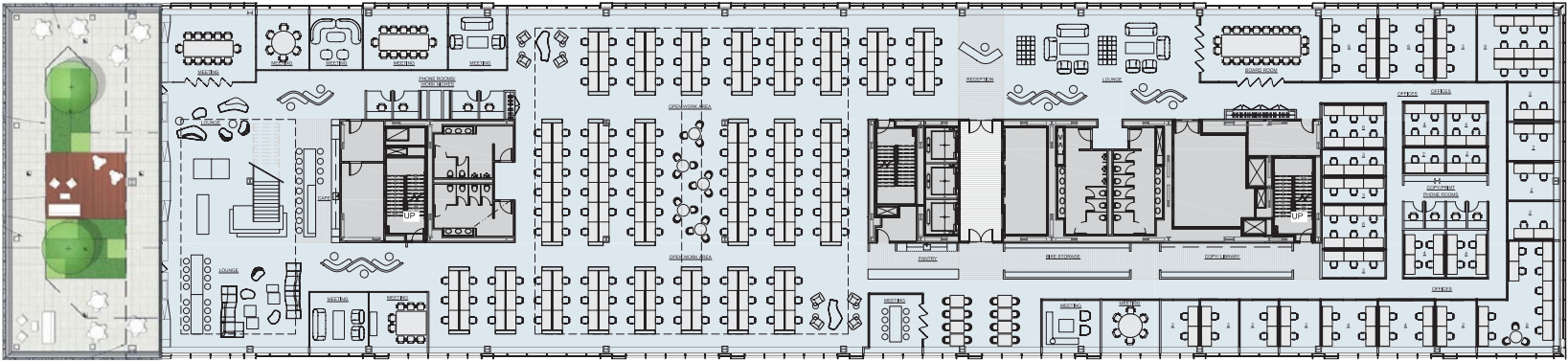


# STACKING PLAN



# TEST FIT

## Single Tenant Scheme | Floor 13 - 41,666 RSF

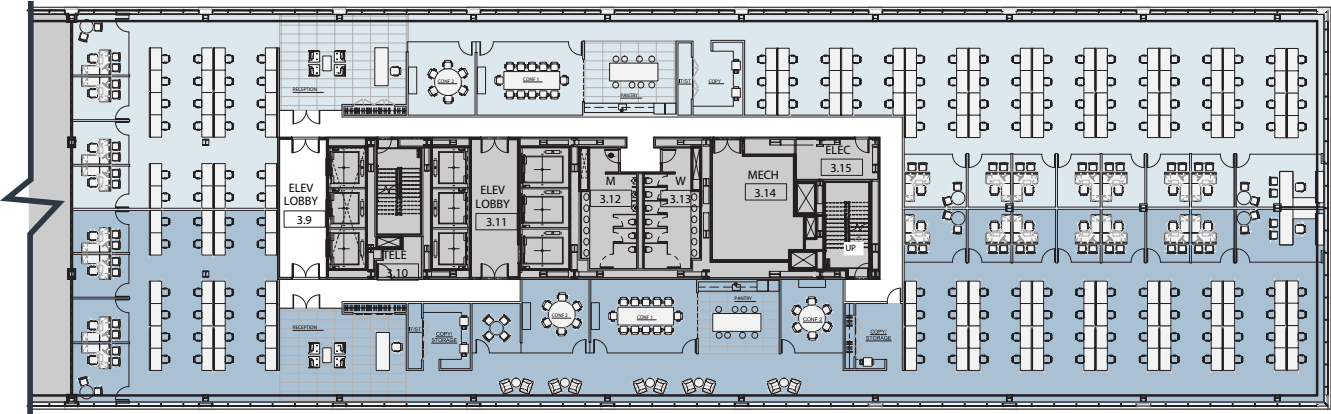


OFFICE DESKS	100
WORKSTATION	168
RECEPTION	1
TOTAL HEADCOUNT	269



**TEST FIT**

**Two Tenant Scheme | Floor 3 - 32,682 RSF (approx 16,000 per suite)**

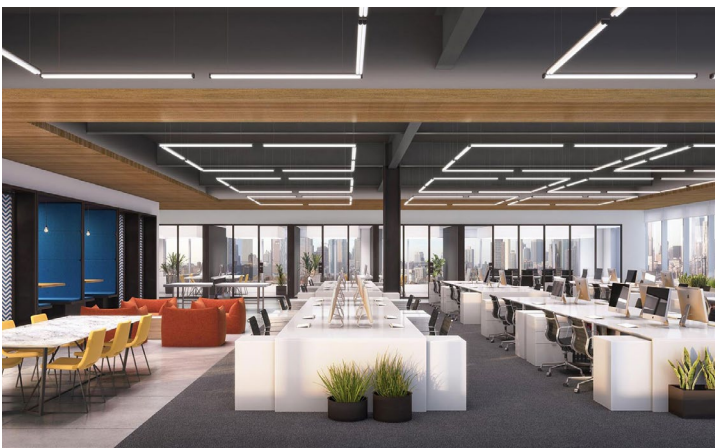
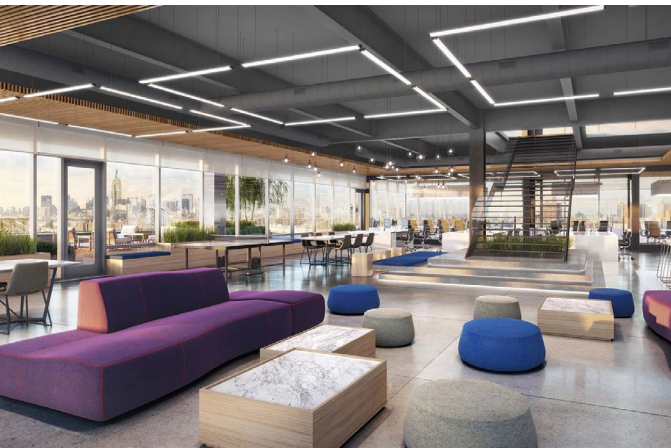


OFFICES	12
WORKSTATION	91
RECEPTIONIST	1

TOTAL HEADCOUNT	104
-----------------	-----

OFFICES	12
WORKSTATION	76
RECEPTIONIST	1

TOTAL HEADCOUNT	89
-----------------	----



## AMENITIES

- ❑ 13,000 square foot food hall with specialty food and beverage offerings
- ❑ 15,000 square foot, state-of-the-art health and wellness center
- ❑ Rooftop conference center and event facility accommodating up to 200 people
- ❑ Multiple lounges for meeting and socializing
- ❑ On-site bike valet
- ❑ Four rooftop gardens on setbacks built into the building
- ❑ Basketball court
- ❑ Open lawn with game tables
- ❑ Tenant experience app

## BUILDING SPECS

- ❑ 675,000 square foot building
- ❑ Class-A office infrastructure; brand new construction
- ❑ 14' floor to floor heights with 8' of vision glass
- ❑ Unobstructed views of Manhattan and Brooklyn
- ❑ Dual cores and two entrances provide access from the land and water side of the site
- ❑ 18,000 square feet of private terraces provide an indoor-outdoor working environment
- ❑ Direct & redundant broadband connectivity with 32 A of A via fiber and wireless pipe
- ❑ State-of-the-art HVAC
- ❑ Nantum building operating system
- ❑ Variable speed air handlers
- ❑ Wired Pre-Certified, Platinum

## ECONOMIC BENEFITS

- **NO** real estate tax
- **NO** occupancy tax
- **NO** sales tax on construction
- **YES** REAP available



# DOCK 72 BROOKLYN NAVY YARD



**RON LO RUSSO**  
212 841 7979  
ron.lorusso@cushwake.com

**CARLOS SUÁREZ**  
212 709 0773  
carlos.suarez@cushwake.com

**FREDDIE FACKELMAYER**  
212 984 8258  
frederick.fackelmayer@cbre.com

**SACHA ZARBA**  
212 984 8317  
sacha.zarba@cbre.com