

FOR
LEASE

PRIME RETAIL/OFFICE SUITES

WOODLAKE CENTER IN LAKEWOOD



9150 W JEWELL AVENUE | LAKEWOOD, CO 80232

192-1,026 SF AVAILABLE | MULTIPLE UNITS LEASING | \$8-12/SF/YEAR

PROPERTY HIGHLIGHTS

Woodlake Center is a quiet office and retail center offering tenants and customers a small town feel with convenient access to major thoroughfares. Situated between Kipling and Wadsworth, this property is highly visible with a high traffic count in the area. Woodlake Center is just minutes from C470 and Santa Fe Drive, tenants and customers will enjoy the proximity to popular retail, restaurant and services nearby.

- Clean, Quiet, & Well Maintained
- Large Parking Lot for easy client access
- Well-Situated without Road Noise
- Professional Property Management
- High Visibility from Major Roadways
- Traffic Count 21,000

JEFF METZ

Commercial Asset Manager
Direct: 720.469.0654
jmetz@rio-realestate.com

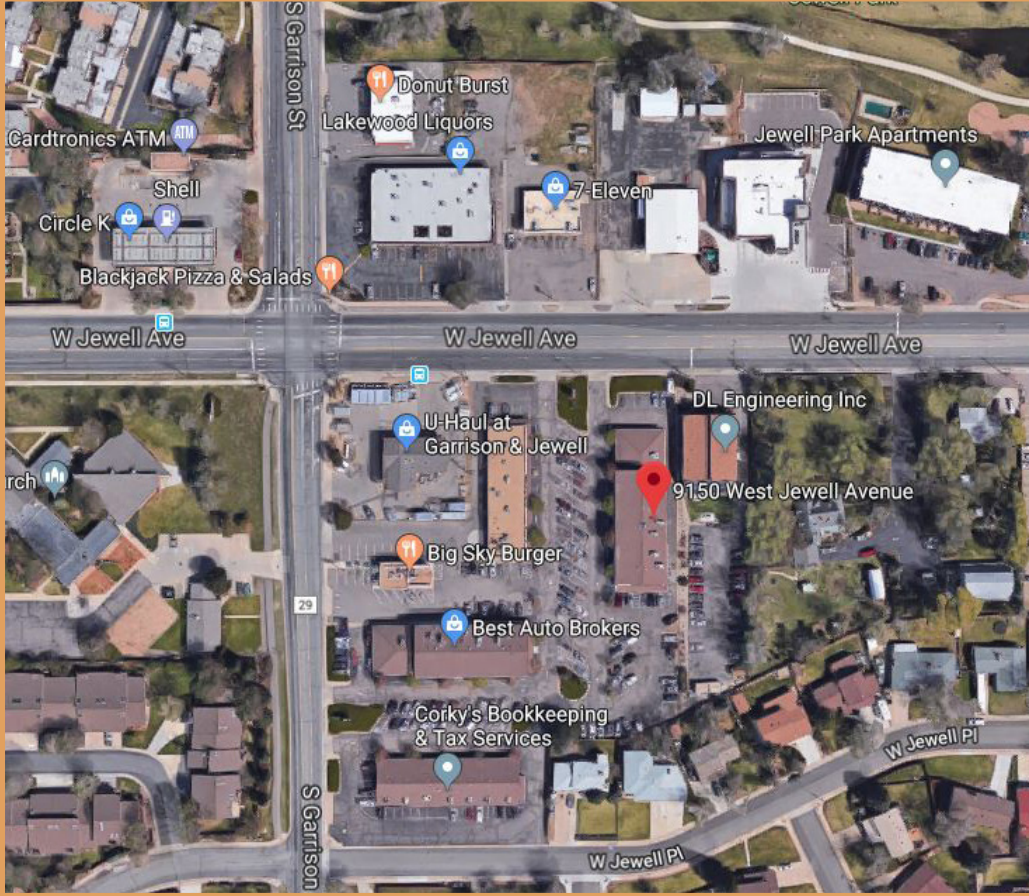
DON BRENNAN

Principal
Direct: 303.777.7365
dbrennan@rio-realestate.com



9150 W JEWELL AVENUE LAKEWOOD, CO 80232

OFFICE/RETAIL FOR LEASE | MULTIPLE UNITS AVAILABLE



SUITE #	Sq. Ft.	RATE	TERM	LEASE TYPE
1990-5	800 SF	\$533	24-60/MO	NNN
1990-3	852 SF	\$852	24-60/MO	NNN
9150-3	1,026 SF	\$1,026	24-60/MO	NNN
9150-111	475 SF	\$514	24-60/MO	FULL SERVICE
9150-113	192 SF	\$224	24-60/MO	FULL SERVICE
9150-114	279 SF	\$313	24-60/MO	FULL SERVICE

JEFF METZ

Commercial Asset Manager

Direct: 720.469.0654

jmetz@rio-realestate.com

