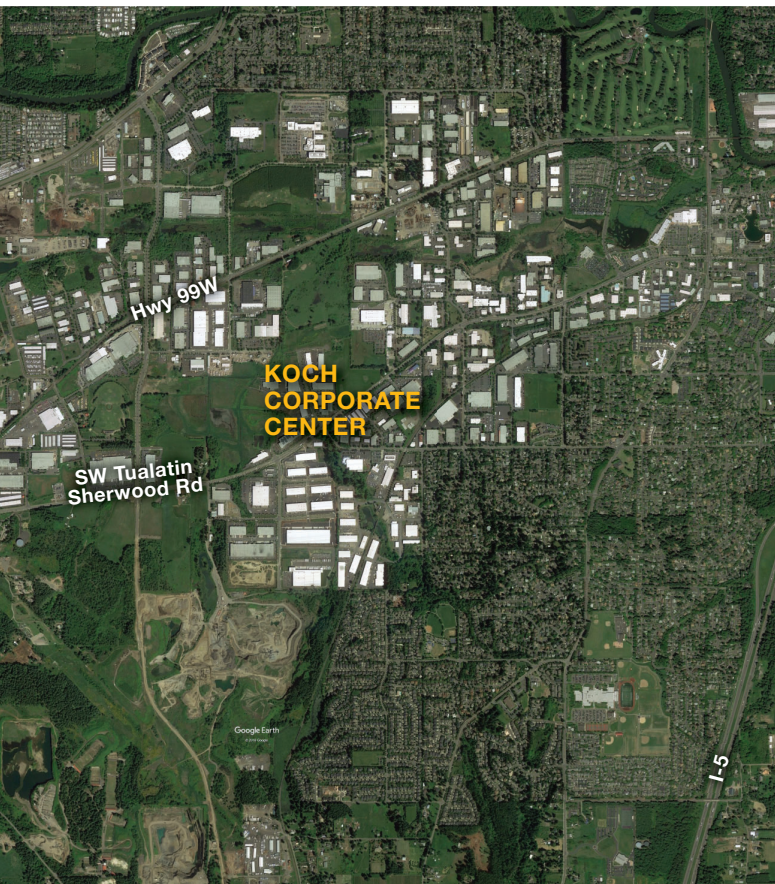


Koch Corporate Center

20750 SW 115th Ave Tualatin • 26,027 sq.ft. Industrial/Warehouse



LOCATION

Building 10
20750 SW 115th Avenue
Tualatin OR 97062

TOTAL SQ.FT. OFFICE SQ.FT.

26,027 sq.ft.
6,343 sq.ft.

DOCK HIGH DOORS 7 DRIVE IN DOORS 3 CLEAR HEIGHT 24'

FEATURES

2.5 miles to I-5
20 minutes to downtown Portland
Owner managed

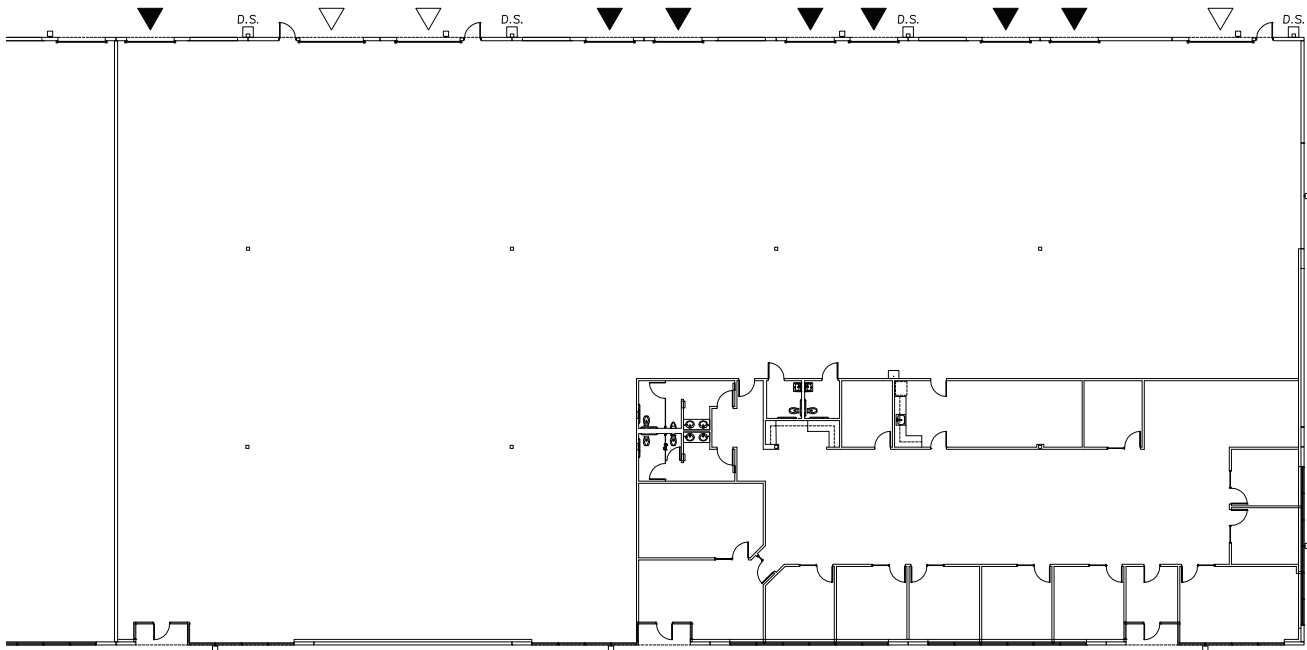
RATE

\$.65/sq.ft. - Shell
\$.95/sq.ft. - Office
NNN

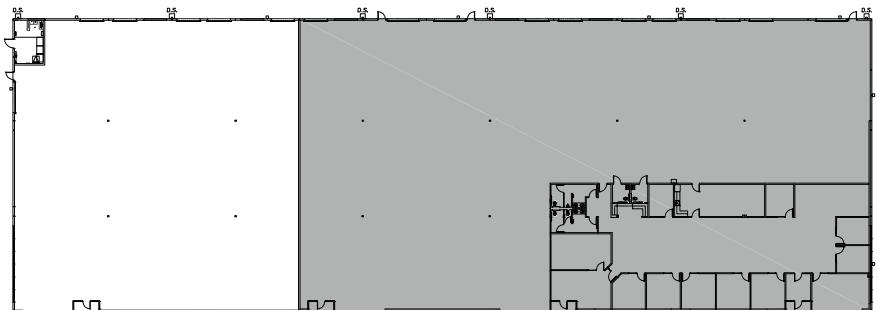
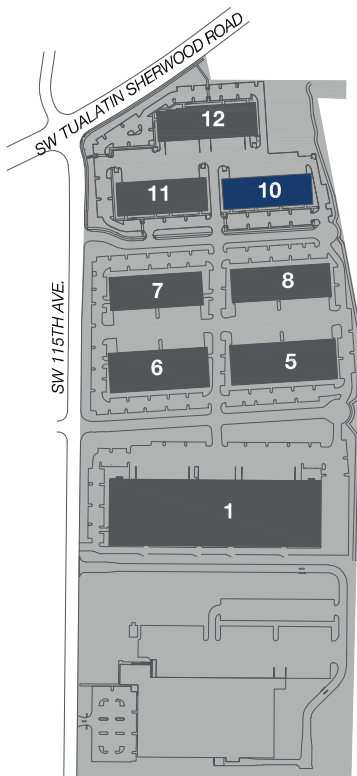
LEASING CONTACT

Sam Briggs
samb@pactrust.com
503-624-6300
Dave Hicks
daveh@pactrust.com
503-624-6300





- ▽ GRADE ACCESS
- ▼ DOCK ACCESS



BUILDING PLAN

KOCH CORPORATE CENTER
 Tualatin, OR 97062



15350 SW Sequoia Pkwy Suite 300 Portland OR 97224 • 503.624.6300 • pactrust.com

The square footage and rates quoted herein are subject to change. Square footage and rates are finalized with a signed lease agreement.

