

STEWART CREEK RD

COMMERCE ROW

FREEPORT DR

105

SITE

CLUB DR



MONTGOMERY, TX

HIGH VISIBILITY ON HIGHWAY 105

LAND FOR SALE

MONTGOMERY BUSINESS PARK | MONTGOMERY, TEXAS

SALE INFORMATION

RUSSELL T. NOLL, CCIM, CPM®

210.253.2945

russell.noll@transwestern.com

HIGH VISIBILITY ON HIGHWAY 105

LAND FOR SALE

MONTGOMERY BUSINESS PARK | MONTGOMERY, TEXAS

SALE INFORMATION

RUSSELL T. NOLL, CCIM, CPM®

210.253.2945

russell.noll@transwestern.com

PROPERTY INFORMATION

- 1.193 ± Total Acres
- Highway 105 Frontage
- Water and sewer available
- Great Access and Visibility
- Asking Price: \$590,000



HIGH VISIBILITY ON HIGHWAY 105

LAND FOR SALE

MONTGOMERY BUSINESS PARK | MONTGOMERY, TEXAS

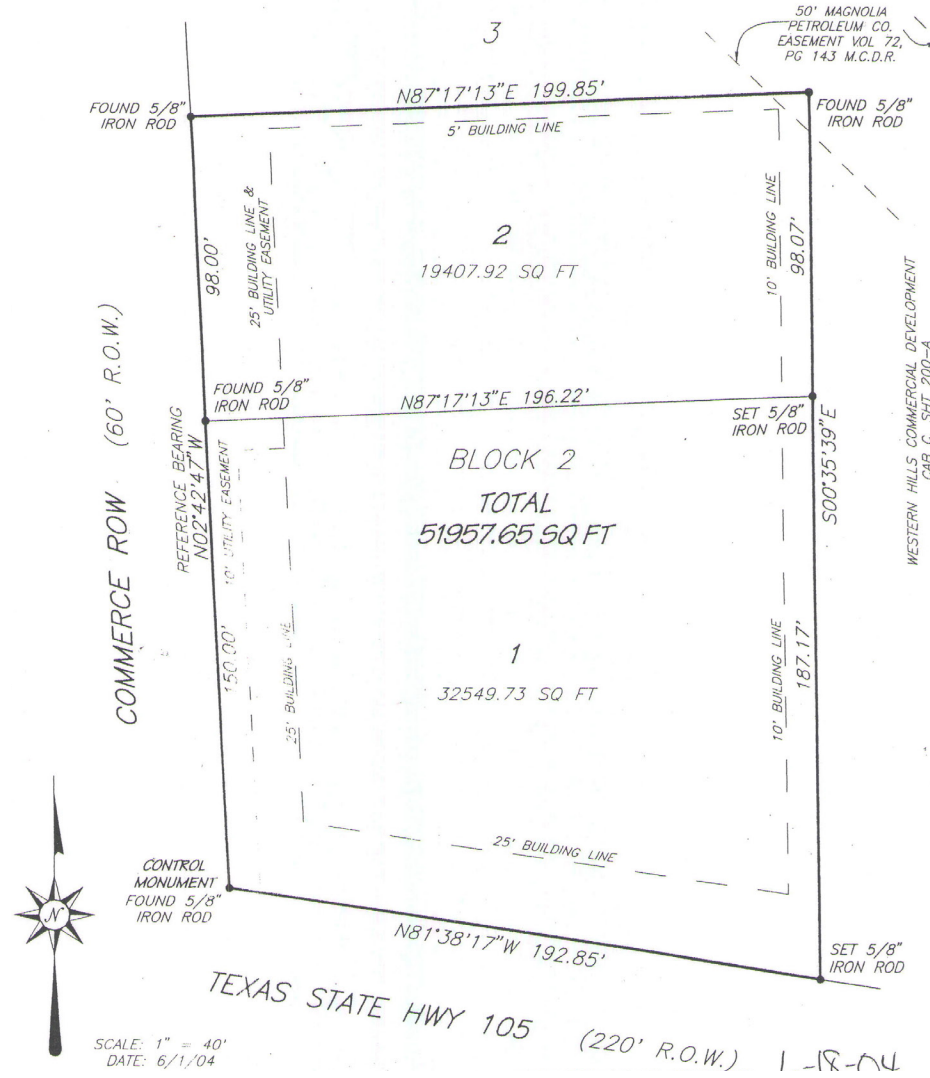
SURVEY

SALE INFORMATION

RUSSELL T. NOLL, CCIM, CPM®

210.253.2945

russell.noll@transwestern.com



HIGH VISIBILITY ON HIGHWAY 105

LAND FOR SALE

MONTGOMERY BUSINESS PARK | MONTGOMERY, TEXAS

SALE INFORMATION

RUSSELL T. NOLL, CCIM, CPM®

210.253.2945

russell.noll@transwestern.com

AERIAL

