



Prime Office Space in the Heart of Coppell

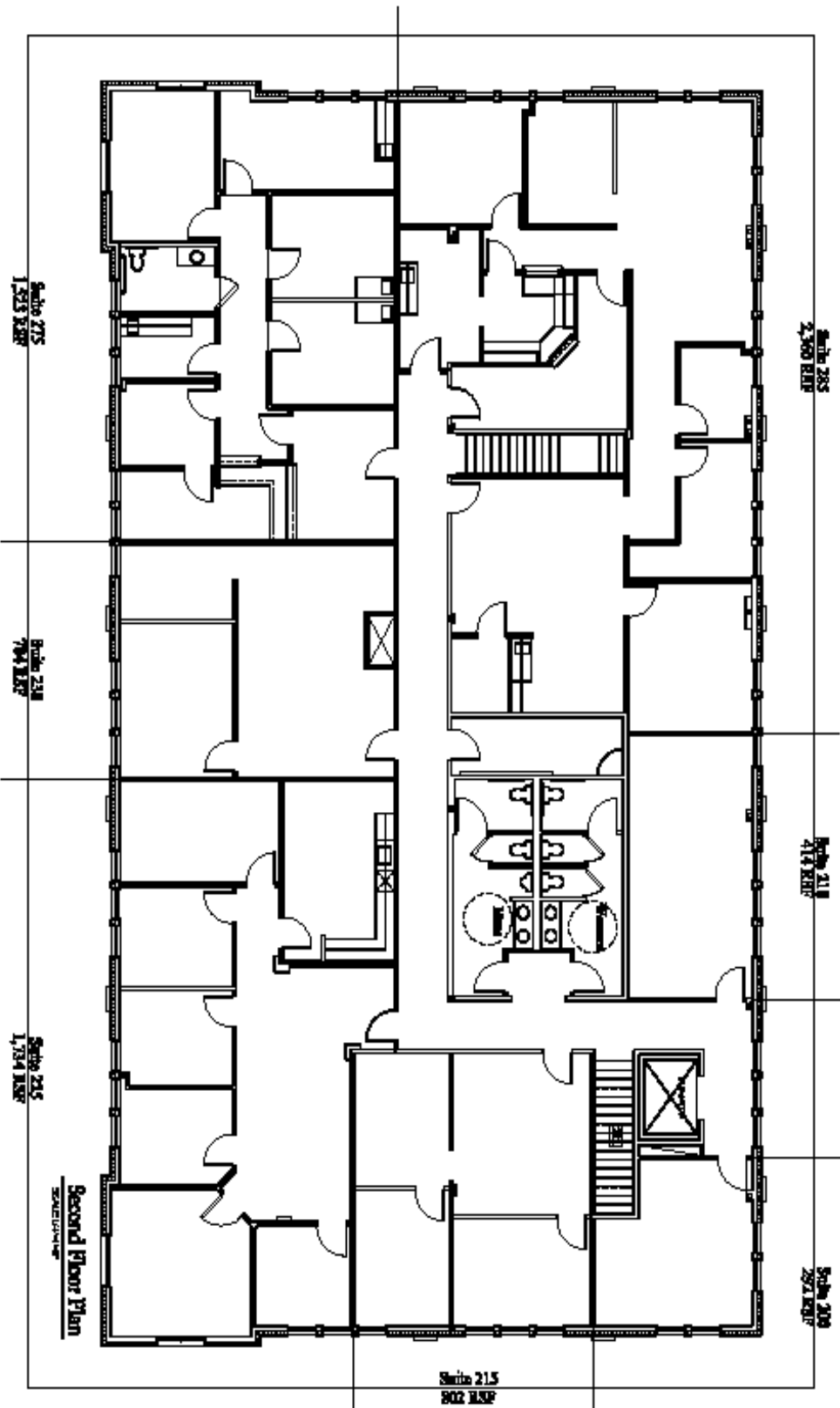
**Wynnpage Plaza II
215 S. Denton Tap Rd.
Coppell, TX 75019**

Two-story retail/office building located in the business heart of Coppell, centered between 635 LBJ Freeway to the south the 121/Sam Rayburn Tollway to the north and the George Bush Tollway to the east. Beautiful property in a superb location!

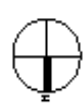


Wendy Buford
Vanguard Commercial Group
2611 Internet Blvd., Ste 125, Frisco, TX 75034
wbuford@vanguardcres.com
(214) 529-2647

- Numerous High-End Custom Home Developments in the Area
- Close Proximity to Coppell's Office/ Warehouse District
- Shaw Carpeting
- Solid Red-Oak Doors with Mahogany Stain and Glass Inserts
- Ceramic Tile and Travertine floors
- Drywall Ceilings in the Common Areas
- Second Floor is Accessible by Elevator and Two Stairwells
- NNN Includes All Utilities except Phone and Internet
- Excellent Management



Wympage Plaza North 2
 215 S. Denton Tap Road



Second Floor Plan

