

CUSTOM OFFICE & RETAIL IN TUALATIN

Diamond Peak Plaza 8101 SW Nyberg Street, Tualatin OR 97062

FOR LEASE



Our Diamond Peak Plaza is located in downtown Tualatin, near Tualatin Lake at the Commons. This two-level retail and office building will feature a new ADA elevator and secure entry access system with storefront doors. Interior upgrades will include Green Certified products and modern finishes to enhance the building's overall aesthetic. Access to the property is simple, as it sits just ½ mile from I-5 and there is large parking lot with three separate entrances. There is access to Tualatin Park & Ride and Tualatin Station nearby and the location is highly walkable and bikeable.

Tricia Anderson

tricia@northrimpx.com | [503.525.1927](tel:503.525.1927)



northrimpx.com

819 SE Morrison Street, Ste 110, Portland OR 97214 | [503.525.1925](tel:503.525.1925)

Matthew Schweitzer | matt@northrimpx.com | [503.381.3134](tel:503.381.3134)

CUSTOM OFFICE AND RETAIL IN TUALATIN

Diamond Peak Plaza 8101 SW Nyberg Street, Tualatin OR 97062

FOR LEASE

Walk Score



"Very Walkable"

Transit Score



"Some Transit"

Bike Score



"Very Bikeable"



DIAMOND PEAK PLAZA

Property Details

- Ground-floor retail spaces
- Upper-level custom offices
- Approximately 17,000 sq. ft. building with spaces ranging from 300 to 2,700 sq. ft.
- ADA accessible with elevator service
- High efficiency heating and cooling
- Green Certified finishes
- Secure access system
- Private parking lot with electric car chargers

Location Details

- In the heart of downtown Tualatin near Tualatin Lake at the Commons
- Across from Nyberg Rivers shopping center with New Seasons and Cabela's
- Just ½ mile from I-5
- Near Tualatin Station and Tualatin Park & Ride

Demographics

(within 1 mile)

- Population (2023): 14,533
- Average Household Income (2023): \$92,724
- Median Resident Age (2023): 36

Daily Traffic Count

(within 1 mile)

TOTAL: 44,000

Tricia Anderson
tricia@northrimpx.com | [503.525.1927](tel:503.525.1927)



northrimpx.com

819 SE Morrison Street, Ste 110, Portland OR 97214 | [503.525.1925](tel:503.525.1925)

Matthew Schweitzer | matt@northrimpx.com | [503.381.3134](tel:503.381.3134)



REPRESENTATIVE PHOTOGRAPHS

CUSTOM OFFICE AND RETAIL IN TUALATIN

Diamond Peak Plaza 8101 SW Nyberg Street, Tualatin OR 97062

FOR LEASE

Tricia Anderson
tricia@northrimpx.com | [503.525.1927](tel:503.525.1927)



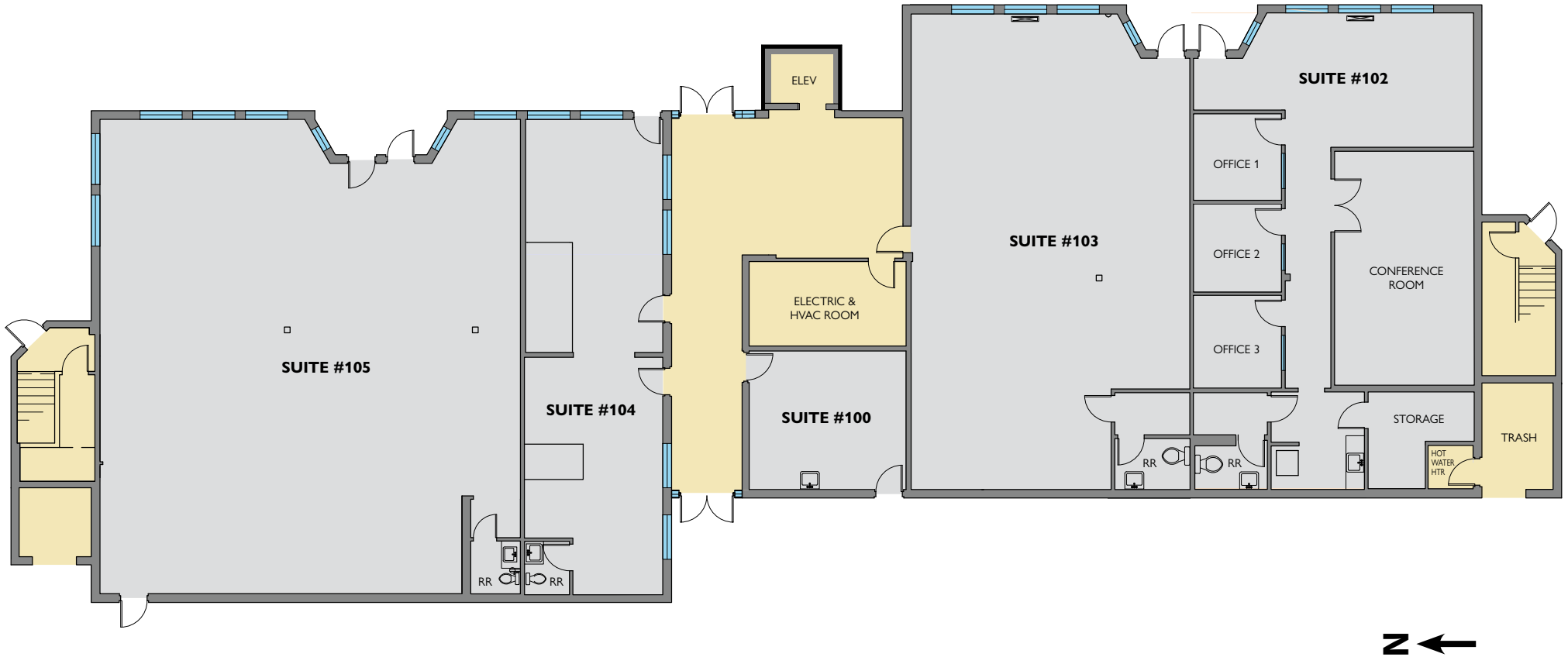
northrimpx.com

819 SE Morrison Street, Ste 110, Portland OR 97214 | [503.525.1925](tel:503.525.1925)

Matthew Schweitzer | matt@northrimpx.com | [503.381.3134](tel:503.381.3134)

FLOOR PLAN

1st Floor



CUSTOM OFFICE AND RETAIL IN TUALATIN

Diamond Peak Plaza 8101 SW Nyberg Street, Tualatin OR 97062

FOR LEASE

Tricia Anderson
tricia@northrimpx.com | [503.525.1927](tel:503.525.1927)



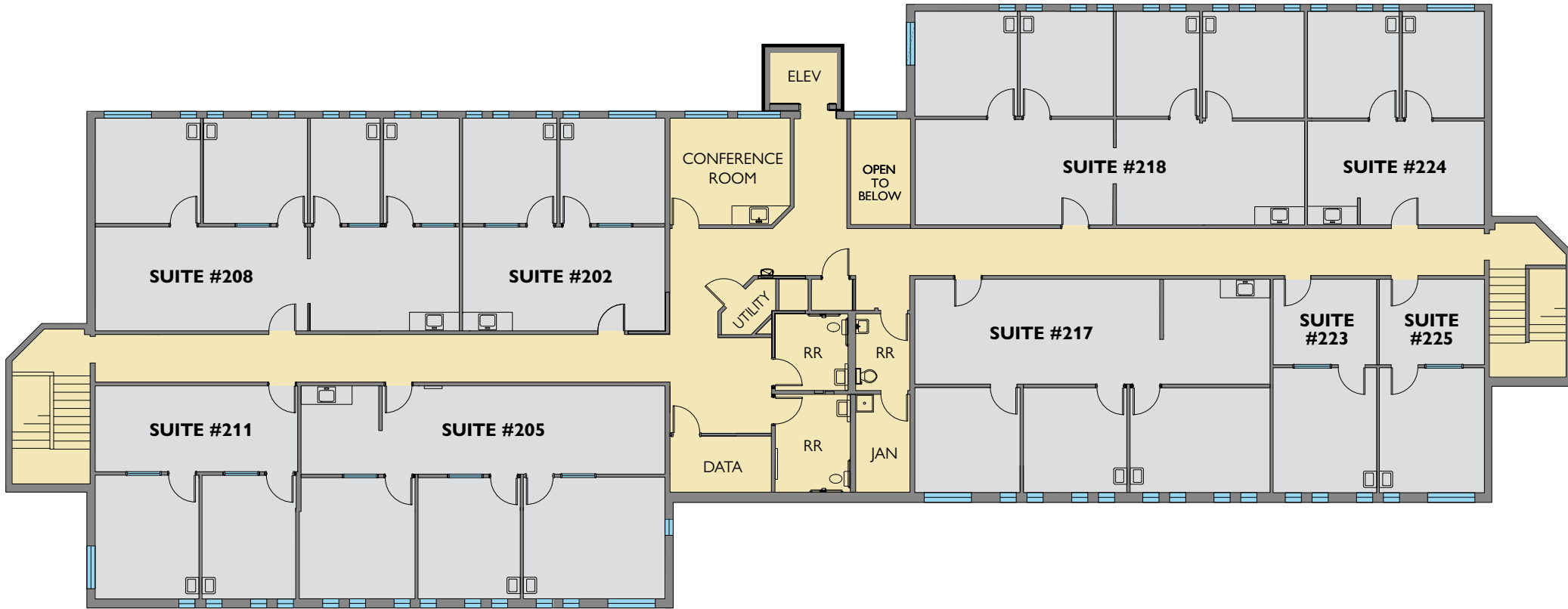
northrimpx.com

819 SE Morrison Street, Ste 110, Portland OR 97214 | [503.525.1925](tel:503.525.1925)

Matthew Schweitzer | matt@northrimpx.com | [503.381.3134](tel:503.381.3134)

FLOOR PLAN

2nd Floor



CUSTOM OFFICE AND RETAIL IN TUALATIN

Diamond Peak Plaza 8101 SW Nyberg Street, Tualatin OR 97062

FOR LEASE

Tricia Anderson
tricia@northrimpx.com | [503.525.1927](tel:503.525.1927)



northrimpx.com

819 SE Morrison Street, Ste 110, Portland OR 97214 | [503.525.1925](tel:503.525.1925)

Matthew Schweitzer | matt@northrimpx.com | [503.381.3134](tel:503.381.3134)



CUSTOM OFFICE AND RETAIL IN TUALATIN

Diamond Peak Plaza 8101 SW Nyberg Street, Tualatin OR 97062

FOR LEASE

Tricia Anderson
tricia@northrimpx.com | 503.525.1927



northrimpx.com
 819 SE Morrison Street, Ste 110, Portland OR 97214 | 503.525.1925
 Matthew Schweitzer | matt@northrimpx.com | 503.381.3134