

SHOPPES AT CROSSINGS

FOR LEASE

906 Crossings Boulevard • Hopewell, Virginia 23860

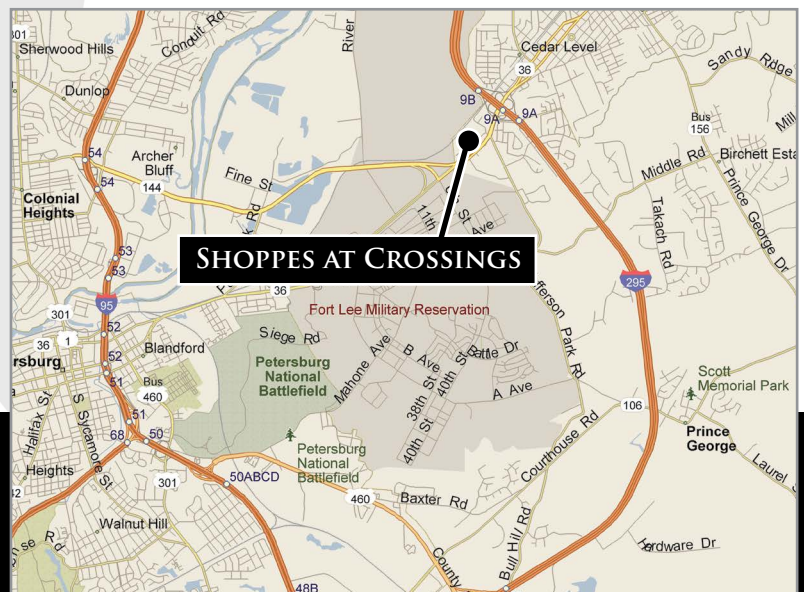


OUTSTANDING MEDICAL SPACE AVAILABLE FOR LEASE

PROPERTY HIGHLIGHTS:

- ▶ 9,600 SF Retail Building.
- ▶ 2,400 SF former medical space available.
- ▶ Located along Route 36 just off I-295 and adjacent to Fort Lee.
- ▶ Ideally situated between Southside Regional Medical Center (Bon Secours) & John Randolph Medical Center (HCA).
- ▶ Join Subway, Starbucks, Food Lion, Ruby Tuesday, Taco-Bell, Burger King & many others in this vibrant market.

Demographics	1 Mile	3 Miles	5 Miles
Population	9,649	53,794	112,229
Households	3,610	18,761	41,510
Average Household Income	\$50,566	\$50,713	\$47,731



Nathan S. Jones, IV

nathan.jones@domcommercial.com

855.530.2300

domcommercial.com

Follow us on:



SHOPPES AT CROSSINGS

FOR LEASE

906 Crossings Boulevard • Hopewell, Virginia 23860



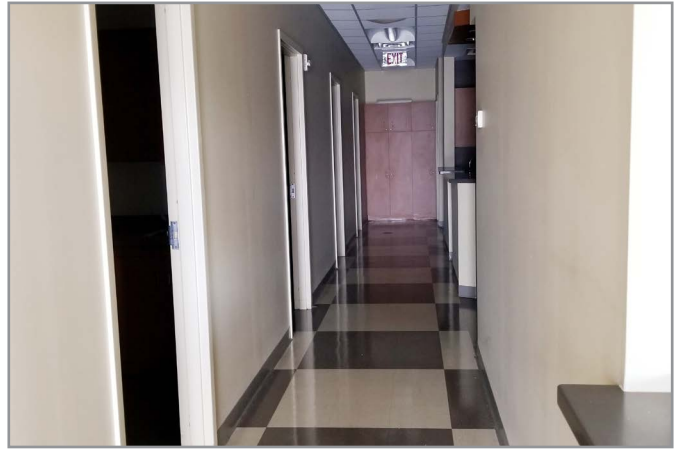
 **DOMINIONCOMMERCIAL**
REAL PARTNERS for REAL ESTATE

Nathan S. Jones, IV
nathan.jones@domcommercial.com
855.530.2300
domcommercial.com

SHOPPES AT CROSSINGS

906 Crossings Boulevard • Hopewell, Virginia 23860

FOR LEASE



 **DOMINIONCOMMERCIAL**
REAL PARTNERS *for* REAL ESTATE

Nathan S. Jones, IV
nathan.jones@domcommercial.com
855.530.2300
domcommercial.com

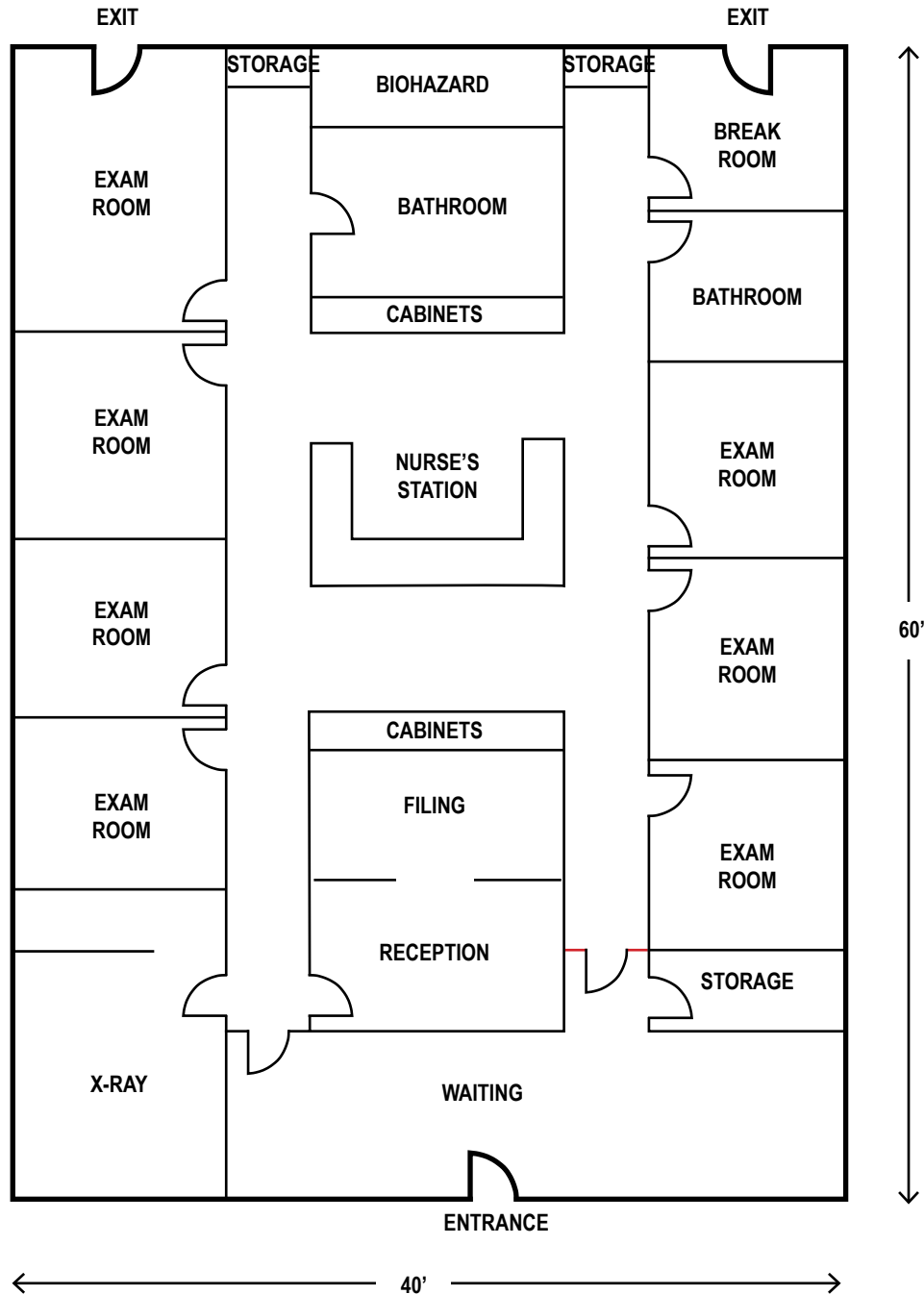
SHOPPES AT CROSSINGS

906 Crossings Boulevard • Hopewell, Virginia 23860

FOR LEASE

FLOOR PLAN

2,400 SF



Nathan S. Jones, IV
nathan.jones@domcommercial.com
855.530.2300
domcommercial.com