

1642

WESTWOOD BOULEVARD

OFFICE SPACE FOR LEASE

1,604 SF TO 2,124 SF



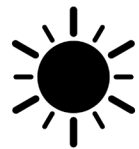
1642

WESTWOOD BOULEVARD

Located in the heart of Westwood, just minutes from UCLA, Beverly Hills, Brentwood, Santa Monica, Century City, and the 10 and 405 Freeways, 1642 Westwood features modern layouts, high ceilings, outdoor patios, and abundant natural light.



City Views



Fantastic Natural Light



Multiple Outdoor Patios



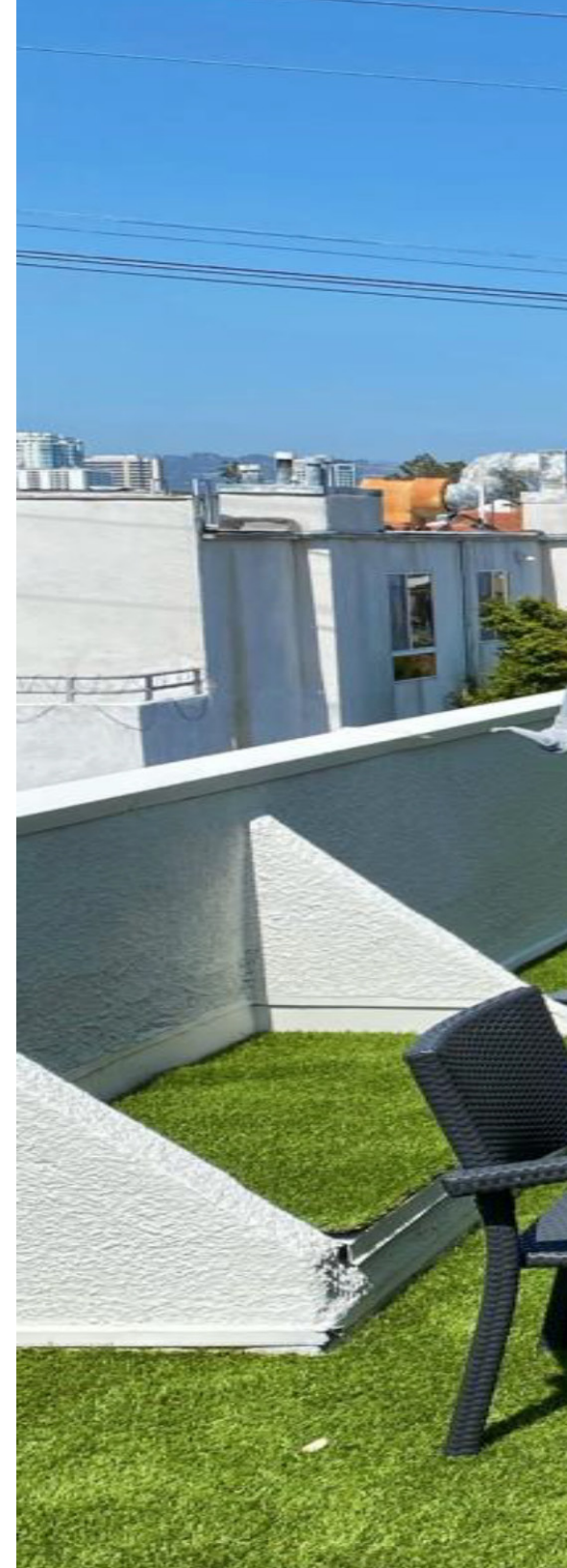
Fiber-optic Capability



On-site Management

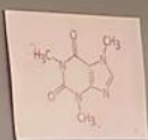


Parking 2/1,000 RSF
\$125 / month





COMMON OUTDOOR SPACE
IDEAL FOR SAFER, SOCIALLY-DISTANCED MEETINGS



Kitchen counter area featuring a sink, faucet, coffee maker, and water dispenser.

Dining table and chairs.

Brown sofa.





1642

WESTWOOD BOULEVARD

AVAILABLE SPACES

Suite	Suite PH-2
Square Footage	1,604 SF
Rate	\$3.10 / SF, FSG
Available	Now

1642

WESTWOOD BOULEVARD

AVAILABLE SPACES

Suite	200
Square Footage	1,919 SF
Rate	\$2.90 / SF, FSG
Available	Now

SPACE FEATURES INCLUDE:

- Brand New Carpet
- New Paint
- Updated Kitchen
- Open Floor Plan



AN'S
AND
(310) 441-0394

CEL
Catering



1642



داروخانه
VITAMINS

PARKING
IN
REAR







1642

WESTWOOD BOULEVARD

AVAILABLE SPACES

Suite	301
Square Footage	2,124 SF
Rate	\$2.85 / SF, FSG
Available	Now

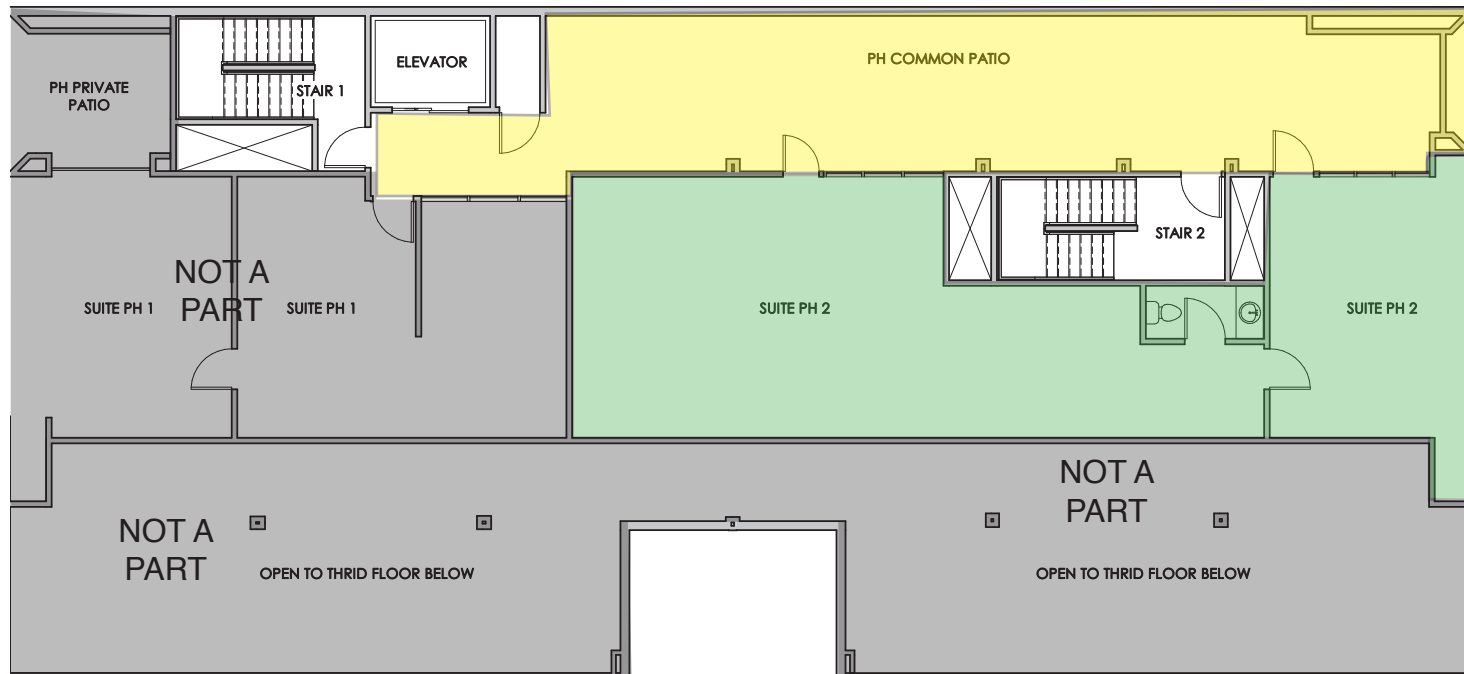
SPACE FEATURES INCLUDE:

Vaulted Ceilings
6 Offices (4 with Windows)
Open Collaborative Area
Loft

1642

WESTWOOD BOULEVARD

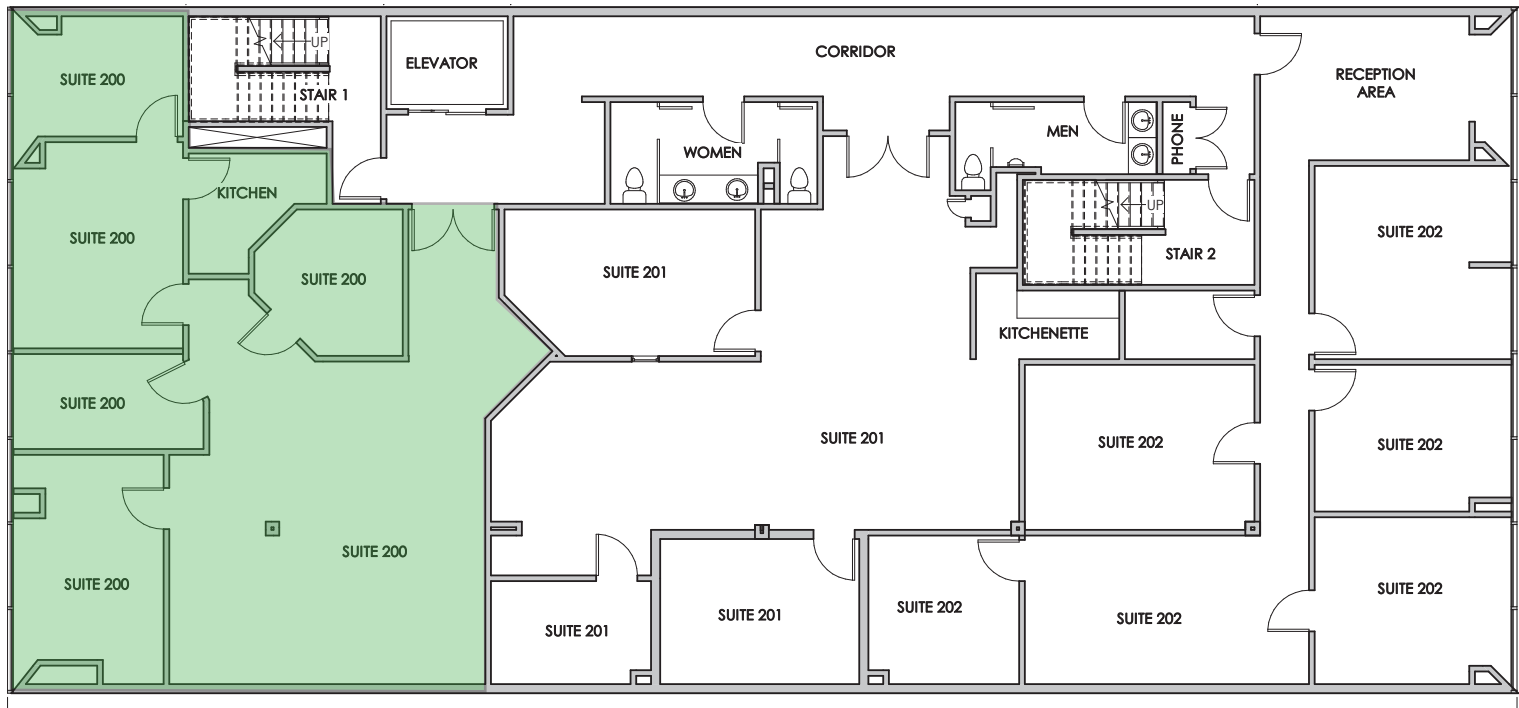
SUITE PH-2
1,604 SF



1642

WESTWOOD BOULEVARD

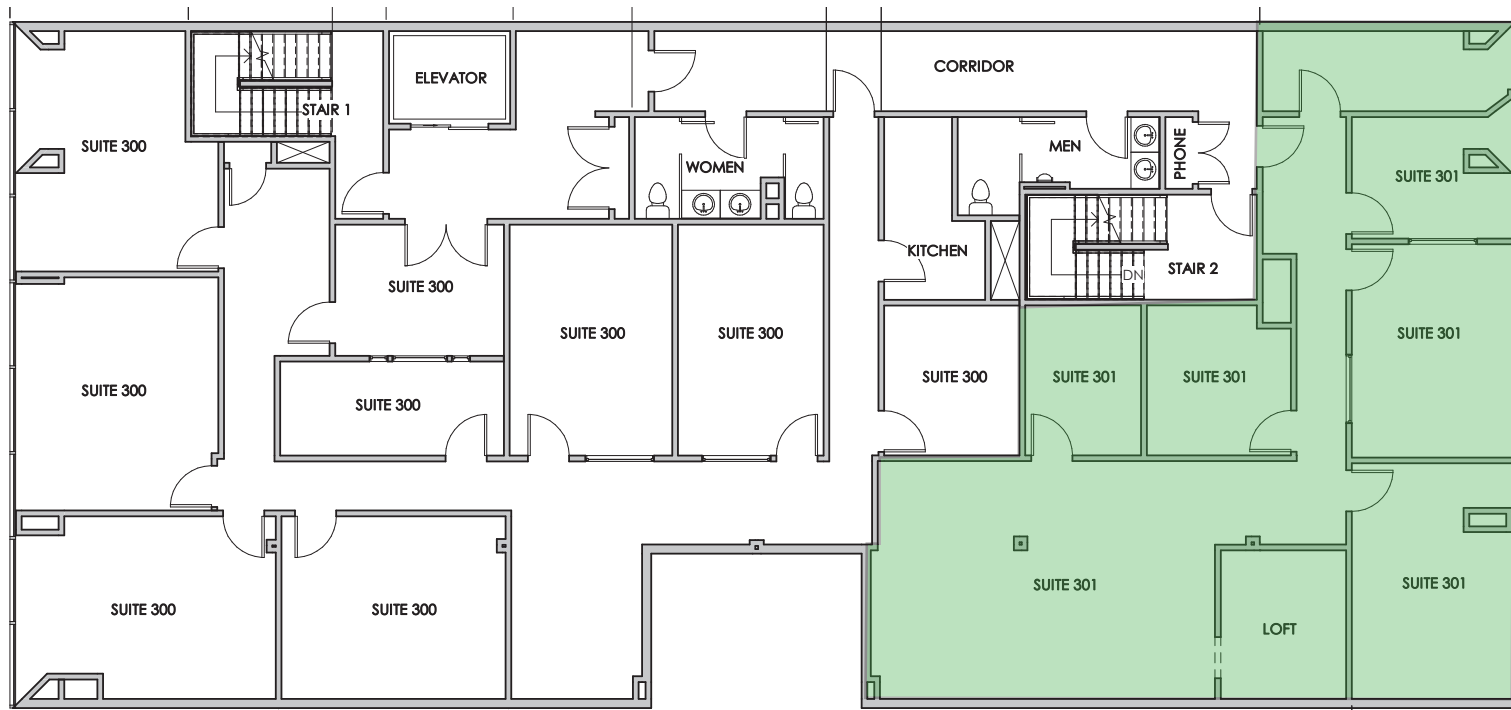
SUITE 200
1,919 SF



1642

WESTWOOD BOULEVARD

SUITE 301
2,124 SF



1642 WESTWOOD BOULEVARD

FOR MORE INFORMATION

JOE KING

310.442.3375

jking@madisonpartners.net

License No. 01195833

BRENT BISSELL

310.442.3387

bbissell@madisonpartners.net

License No. 01370289