

# OFFICE SPACE

# 2,700 SF

2213 E. GRAND RIVER AVENUE | LANSING | MI | 48912



**FOR LEASE** - Office Space For Lease near Frandor Shopping Center. Centrally located just minutes from Downtown Lansing, Eastwood Towne Center, East Lansing and Michigan State University with quick access to US-127.

Join Lyman Sheets Insurance in approximately 2,700 SF of usable space (open floor plan) with lots of parking and access to the Break Room. **Asking Price: \$12 PSF/Annual, Gross Lease (\$2,700/mo.)**

## PROPERTY FEATURES

- 2,700 Total Sq. Ft. Available
- Class B
- Construction Type: Brick
- Roof Type: Flat
- On-site parking
- Zoned Commercial
- Ingham County
- Parcel ID#: 33-21-01-11-360-006

## DIRECTIONS

From US-127 take Exit 78 toward I-69 BUS/M-43/Saginaw St/Grand River Ave. Go West on Grand River Ave 0.5 miles. Office Building will be on the right just past Westlund's Apple Market.



**BERKSHIRE  
HATHAWAY**  
HomeServices

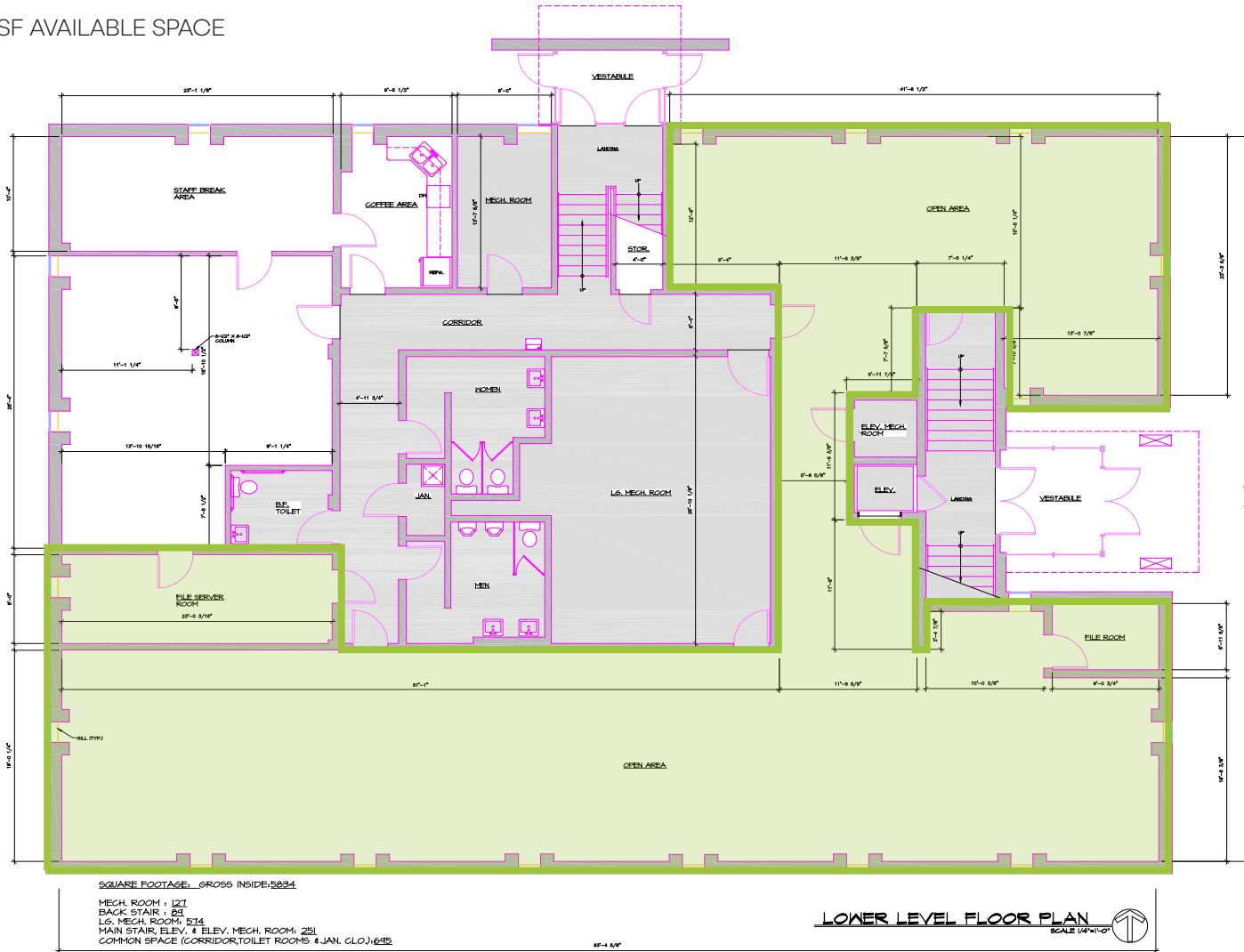
Tomie Raines REALTORS®  
COMMERCIAL

For more information, please contact  
KELLY MILLER, COMMERCIAL ADVISOR  
O: (844) 477-8652 | C: (517) 712-5496

E: [KMILLER@TOMIERAINES.COM](mailto:KMILLER@TOMIERAINES.COM) | [BHSMCommercial.com](http://BHSMCommercial.com)

AVAILABLE SUITE - LOWER LEVEL

- 2,700 SF AVAILABLE SPACE



08-15-2008  
08-15-2008

140 Main Street  
Ottawa, Michigan 48863  
Phone: (517) 348-6822  
Fax: (517) 348-6888  
www.zagors.com



**PEABODY GROUP**  
SPECIALTY CONTRACTORS  
GENERAL CONTRACTORS  
MECHANICAL CONTRACTORS  
ELECTRICAL CONTRACTORS  
PLUMBING CONTRACTORS  
HVAC CONTRACTORS  
ROOFING CONTRACTORS  
CONCRETE CONTRACTORS  
PAINTING CONTRACTORS  
GLASS CONTRACTORS  
MASONRY CONTRACTORS  
METAL FABRICATORS  
WELDING CONTRACTORS  
CABINETRY CONTRACTORS  
CERAMIC CONTRACTORS  
WOODWORK CONTRACTORS  
IRONWORK CONTRACTORS  
STEEL ERECTION CONTRACTORS  
CONSTRUCTION MANAGEMENT  
PROJECT MANAGEMENT  
CONSTRUCTION INSPECTION  
CONSTRUCTION DOCUMENTS  
CONSTRUCTION ADMINISTRATION

PROJECT MANAGER:  
RF  
DRAWN BY:  
JCL/ML



12.105

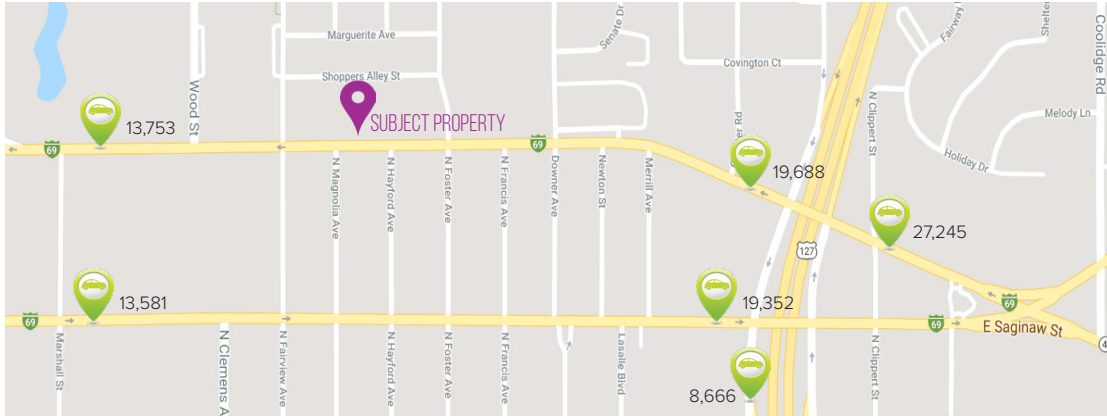
A-1

© 2010 BHS HomeServices, Inc. All rights reserved. This document is the property of BHS HomeServices, Inc. and is not to be distributed, copied, or otherwise used without the written consent of BHS HomeServices, Inc.

## DEMOGRAPHICS

	1 Mile	3 Miles	5 Miles
Population	16,229	111,045	199,616
Households	7,378	41,703	79,340
Median Household Income	\$44,192.08	\$35,339.86	\$45,589.58

## TRAFFIC COUNTS



## NEARBY BUSINESSES



**BERKSHIRE  
HATHAWAY**  
HomeServices

Tomie Raines REALTORS®  
COMMERCIAL

For more information, please contact  
KELLY MILLER, COMMERCIAL ADVISOR  
O: (844) 477-8652 | C: (517) 712-5496

E: [KMILLER@TOMIERAINES.COM](mailto:KMILLER@TOMIERAINES.COM) | [BHSMCommercial.com](http://BHSMCommercial.com)