



# 1705 WEST PARKSIDE LANE

PHOENIX, AZ 85027

**FOR SALE OR LEASE**

**FOR MORE INFORMATION CONTACT:**

**TREVOR MCKENDRY**

602.575.2332

Trevor.McKendry@daumcommercial.com

**CHRIS ROGERS**

602.575.2309

Chris.Rogers@daumcommercial.com

**STEVE MCKENDRY**

602.575.2300

Steve.McKendry@daumcommercial.com

**DAUM**  
COMMERCIAL REAL ESTATE SERVICES

ONCOR INTERNATIONAL

# 1705 WEST PARKSIDE LANE

PHOENIX, AZ 85027

## BUILDING FEATURES



### BUILDING FEATURES:

SQUARE FEET: **33,871**  
OFFICE SQUARE FEET: **5,000 SF +/-**  
LOT SIZE: **2.09 ACRES**  
POWER: **3,600 AMPS 277/480 V**  
LOADING: **TRUCKWELL & GRADE LEVEL**  
WAREHOUSE COOLING: **100% AC**  
CLEAR HEIGHT: **20'**  
ZONING: **CP / BP**  
YARD: **PAVED AND FENCED**  
PARKING: **2.0 / 1,000 SF**

### 2018 IMPROVEMENTS:

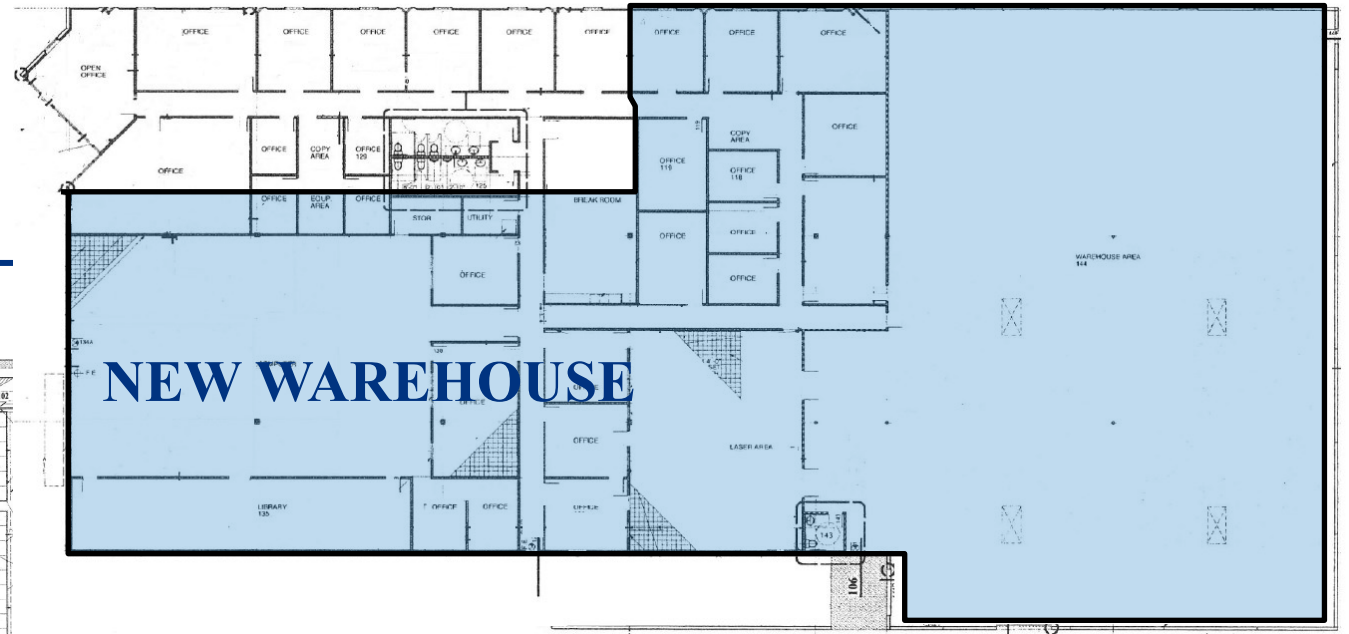
NEW EXTERIOR & INTERIOR PAINT  
BRAND NEW OFFICE  
NEW INSULATION  
NEW LIGHTING  
NEW LANDSCAPING

# 1705 WEST PARKSIDE LANE

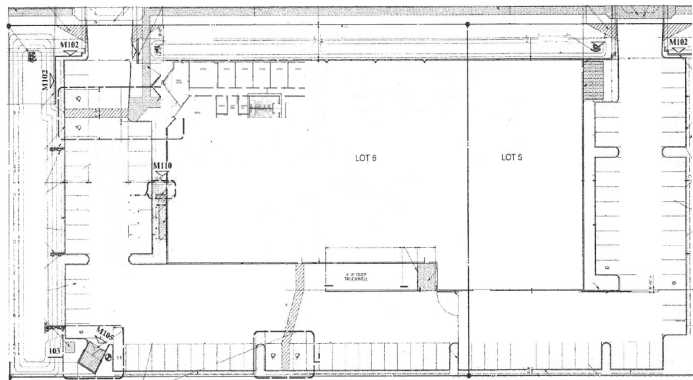
PHOENIX, AZ 85027

DAUM | FLOOR PLAN

## FLOOR PLAN



## SITE PLAN



**NEW WAREHOUSE**

# 1705 WEST PARKSIDE LANE

PHOENIX, AZ 85027

DAUM | AERIAL

1705  
W PARKSIDE LANE  
PHOENIX, AZ 85027



FOR MORE INFORMATION CONTACT:

**TREVOR MCKENDRY**

602.575.2332

Trevor.Mckendry@daumcommercial.com

**CHRIS ROGERS**

602.575.2309

Chris.Rogers@daumcommercial.com

**STEVE MCKENDRY**

602.575.2300

Steve.McKendry@daumcommercial.com

ONCOR INTERNATIONAL

**1705 WEST PARKSIDE LANE**  
PHOENIX, AZ 85027

PROPERTY SUMMARY