



# 2500 CHERRY

MEDICAL OFFICE FOR LEASE

CONTACT INFORMATION:

**GARY HUNTER, CCIM**  
206.505.9427  
hunter@westlakeassociates.com

**BRANDON THOMAS**  
206.303.9595  
bthomas@cbcworldwide.com

Westlake Associates, Inc., 1200 Westlake Ave N, Suite 310, Seattle, WA 98109





**\$21.00 / SF + NNN**

**MEDICAL OFFICE**

**PHYSICIANS**

**DENTISTRY**

**PERIODONTICS**

**MEDICAL SPECIALISTS**

**BEHAVIORAL SCIENCES**

**2500 CHERRY PLACE**  
Bremerton, WA 98310

**LOCATION**

The 2500 Cherry Professional Building is located in the Sheridan Park neighborhood of East Bremerton; a one hour ferry ride - or thirty minute fast ferry ride - from downtown Seattle.

Located in the Historic Manette District of Bremerton, the 2500 Cherry building delivers the experience of modern image, efficient design, and the best branded image for the medical professional.

CONTACT INFORMATION:

**GARY HUNTER, CCIM**  
206.505.9427  
hunter@westlakeassociates.com

**BRANDON THOMAS**  
206.303.9595  
bthomas@cbcworldwide.com





## BUILDING OVERVIEW

- + Full Floor Available
- + Build-Out Ready
- + Parking Ratio -- 6.0
- + 97 Parking Stalls
- + Floor 1 -- 4,350± SF
- + Floor 2 -- 5,531± SF
- + Floor 3 -- 6,200± SF



### CONTACT INFORMATION:

**GARY HUNTER, CCIM**  
206.505.9427  
hunter@westlakeassociates.com

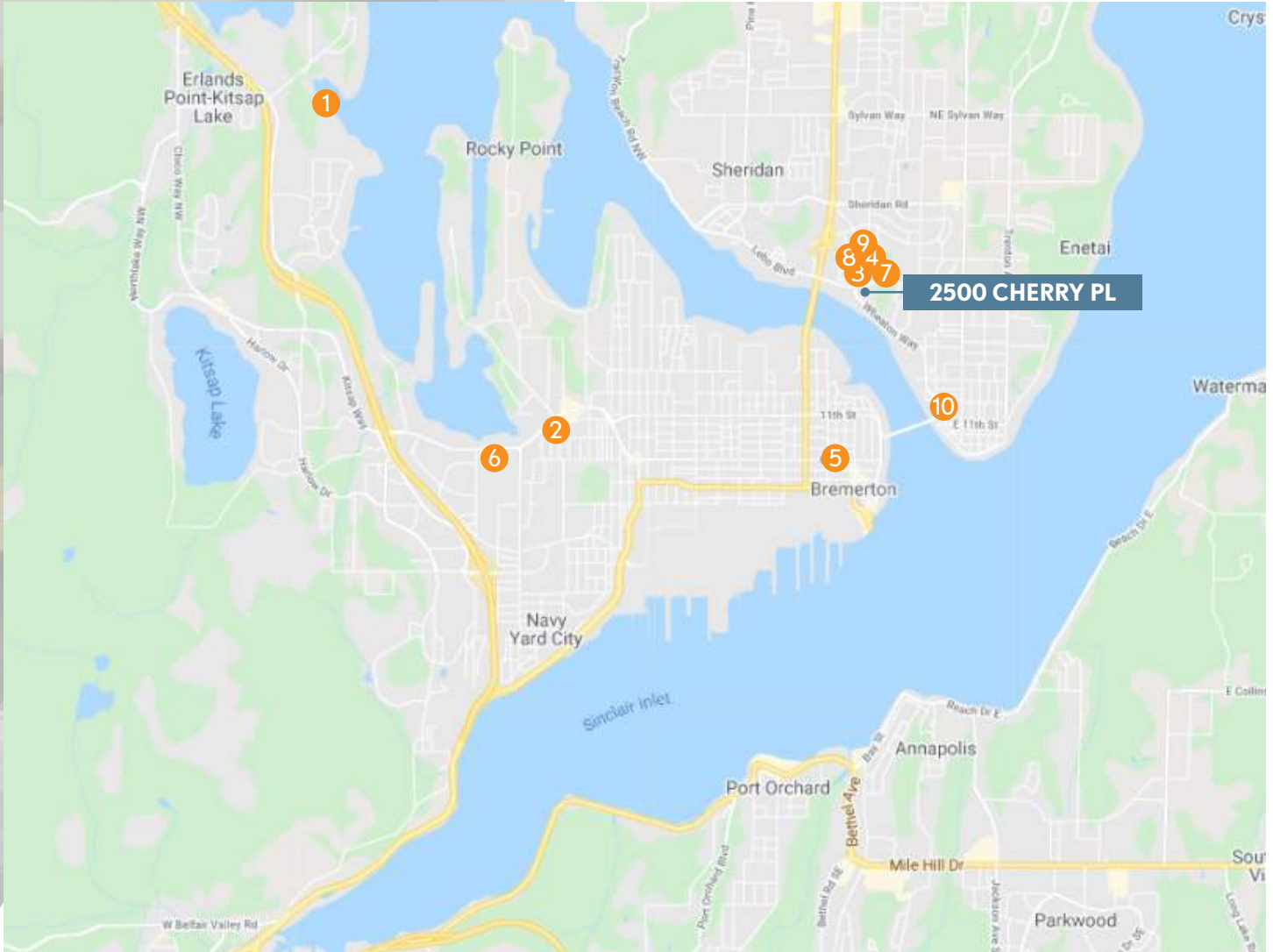
**BRANDON THOMAS**  
206.303.9595  
bthomas@cbcworldwide.com



# 2500 CHERRY

2500 CHERRY PL | BREMERTON, WA 98310

# FOR LEASE



## SURROUNDING MEDICAL SERVICES & HOSPITALS

1. Naval Hospital Bremerton
2. Bremerton VA Clinic
3. Peninsula Medical Building
4. Olympic Psychiatric & Wellness
5. Peninsula Community Health Svc
6. CHI Franciscan Family Medicine Clinic
7. Kitsap Medical Group
8. Bridgeview Medical Center
9. Olympic Internal Medicine
10. The Manette Clinic

### CONTACT INFORMATION:

**GARY HUNTER, CCIM**  
206.505.9427  
hunter@westlakeassociates.com

**BRANDON THOMAS**  
206.303.9595  
bthomas@cbcworldwide.com



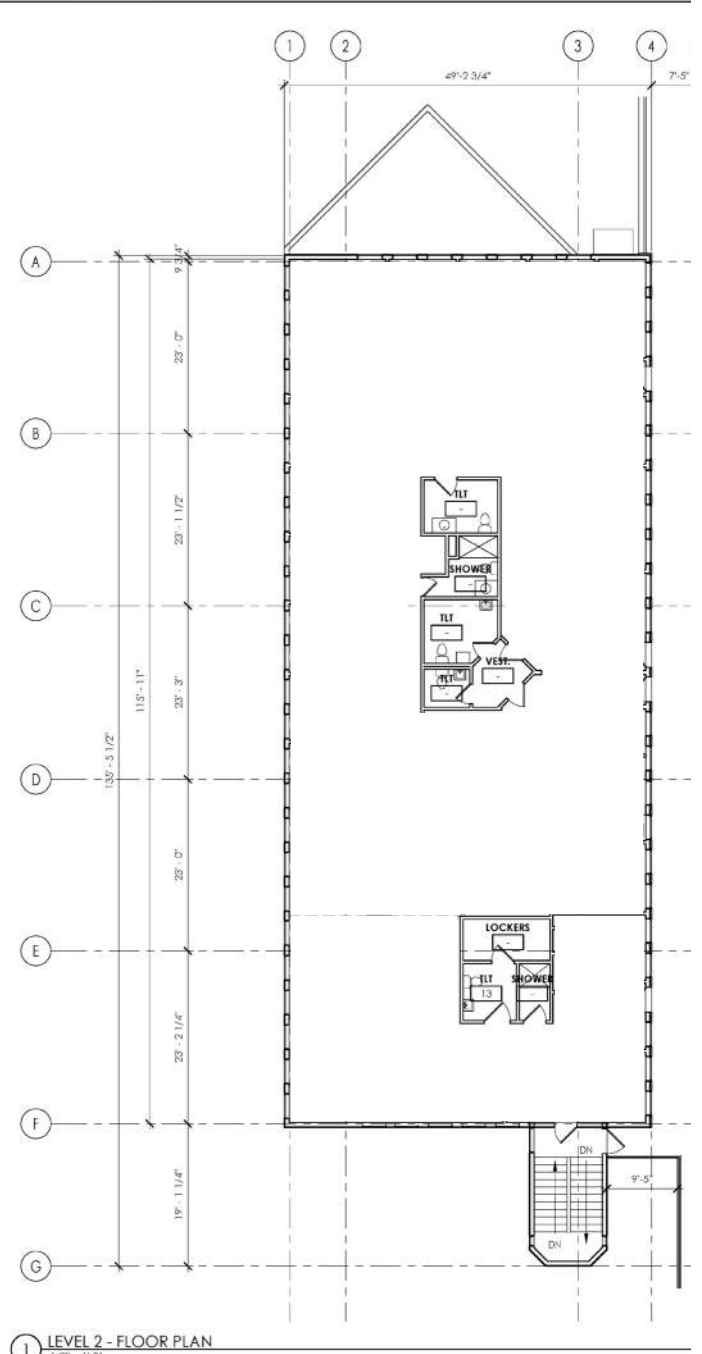
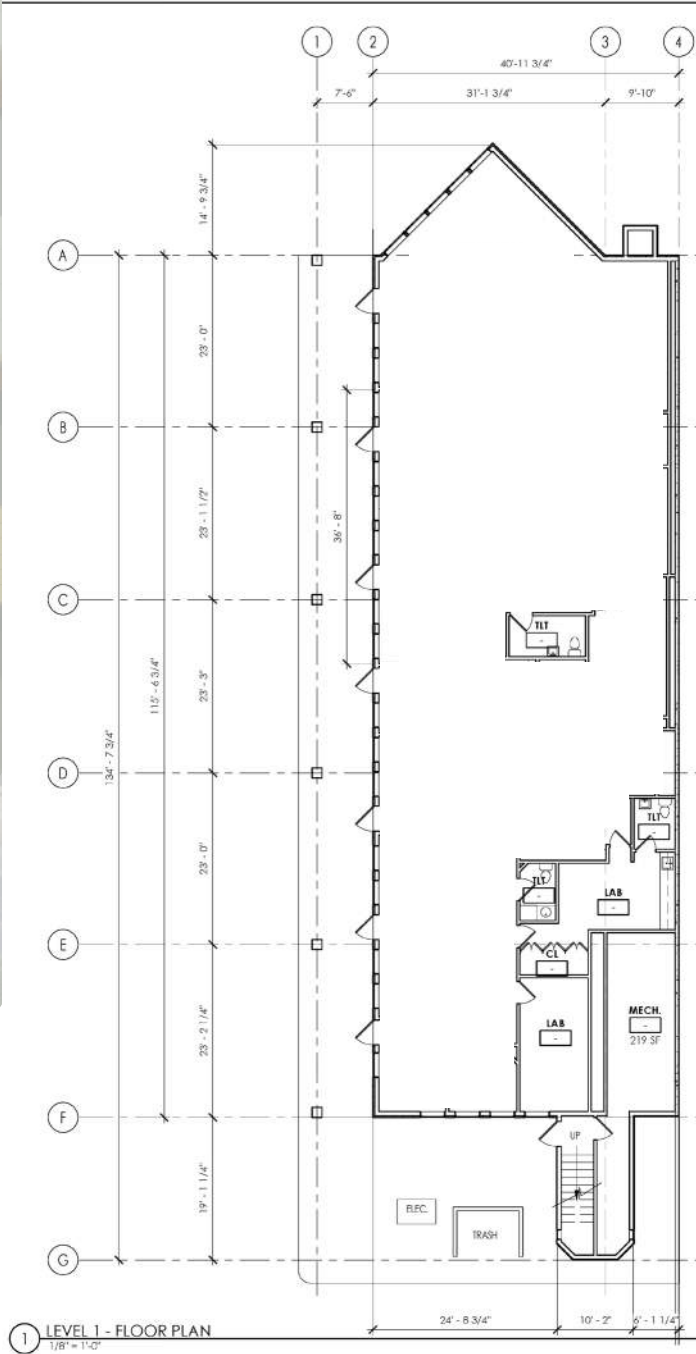
# 2500 CHERRY

2500 CHERRY PL | BREMERTON, WA 98310

# FOR LEASE

## 1st Floor

## 2nd Floor



CONTACT INFORMATION:

**GARY HUNTER, CCIM**  
206.505.9427  
hunter@westlakeassociates.com

**BRANDON THOMAS**  
206.303.9595  
bthomas@cbcworldwide.com

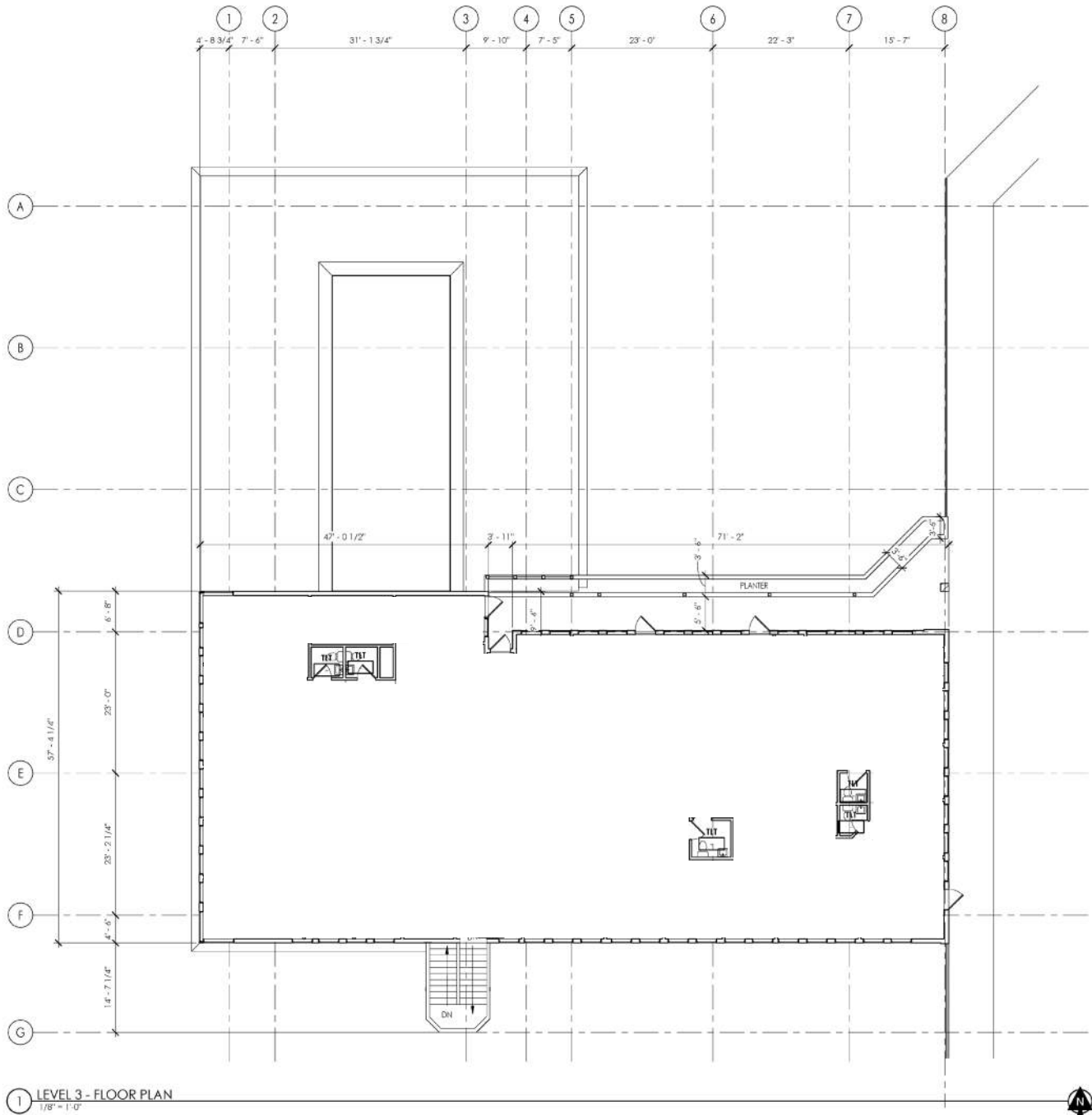


# 2500 CHERRY

2500 CHERRY PL | BREMERTON, WA 98310

# FOR LEASE

## 3rd Floor



### CONTACT INFORMATION:

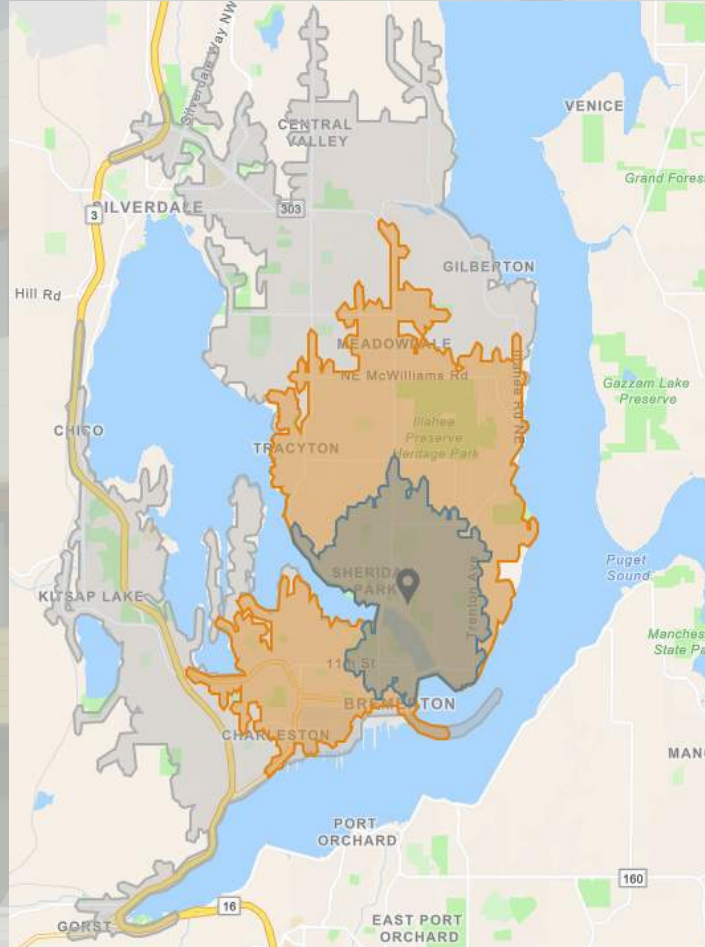
**GARY HUNTER, CCIM**  
206.505.9427  
hunter@westlakeassociates.com

**BRANDON THOMAS**  
206.303.9595  
bthomas@cbcworldwide.com



# 2500 CHERRY

2500 CHERRY PL | BREMERTON, WA 98310



## 41,405

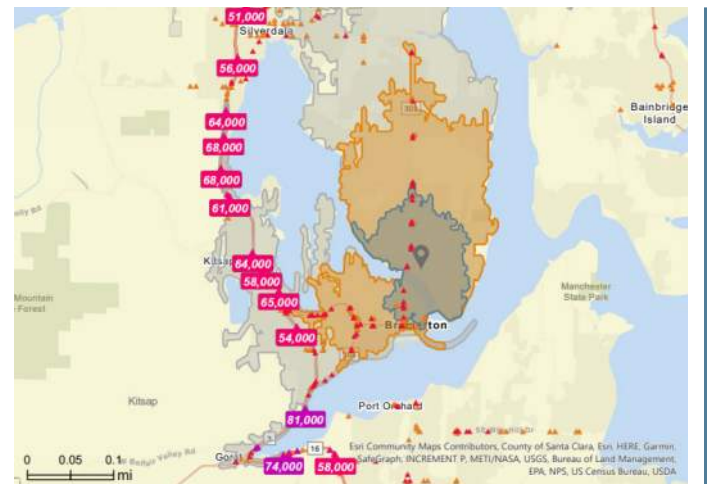
est Population, City of Bremerton

### DRIVE TIME

	5 MINS	10 MINS	15 MINS
2020 Population	18,335	47,458	85,985
Median HH Income	\$52,443	\$57,871	\$63,350
Median Age	39	37.6	36.5
Total Businesses	630	1,442	2,154
Total Employees	8,098	15,674	24,947
Avg Medical Expenditure	\$38K	\$93K	\$176K

### KEY

- 5 MINUTES
- 10 MINUTES
- 15 MINUTES



DISCLAIMER: This information has been secured from sources we believe to be reliable, but we make no representations or warranties, expressed or implied, as to the accuracy of the information. References to square footage, age, and numbers are approximate. Parties must verify the information and bear all risk for any inaccuracies.

### CONTACT INFORMATION:

**GARY HUNTER, CCIM**  
206.505.9427  
hunter@westlakeassociates.com

**BRANDON THOMAS**  
206.303.9595  
bthomas@cbcworldwide.com





# 2500 CHERRY



CONTACT INFORMATION:

**GARY HUNTER, CCIM**  
206.505.9427  
hunter@westlakeassociates.com

**BRANDON THOMAS**  
206.303.9595  
bthomas@cbcworldwide.com







# 2500 CHERRY



CONTACT INFORMATION:

**GARY HUNTER, CCIM**  
206.505.9427  
hunter@westlakeassociates.com

**BRANDON THOMAS**  
206.303.9595  
bthomas@cbcworldwide.com



Westlake Associates, Inc., 1200 Westlake Ave N, Suite 310, Seattle, WA 98109