

2222 Eastlake Avenue East

Seattle, WA

Owner-User / Live- Work Office Building

\$625,000 Sale Price

Total area: ± 2,184 SF*

Floor 1 (office): ± 700 SF

Floor 2 (office): ± 700 SF

Floor 3 (apartment): ± 650 SF

*Exact size to be verified by purchaser

Panoramic Lake Union and
city views

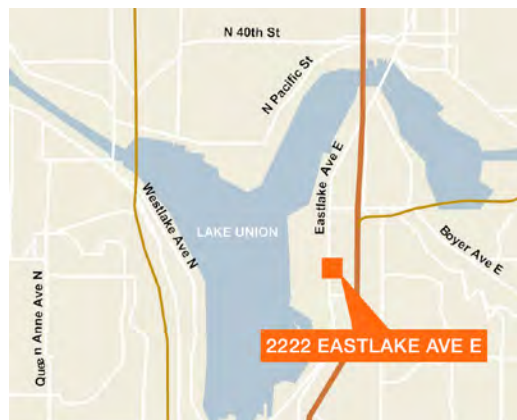
On-site parking; 4 tandem stalls

2,050 SF of land, zoned LR2 RC

Call broker for more details



Location



Contact

Corey Sollom

206.296.9620

csollom@kiddermathews.com

Ken Hirata

206.296.9625

khirata@kiddermathews.com

2222 Eastlake Ave E



Contact

Corey Sollom

206.296.9620

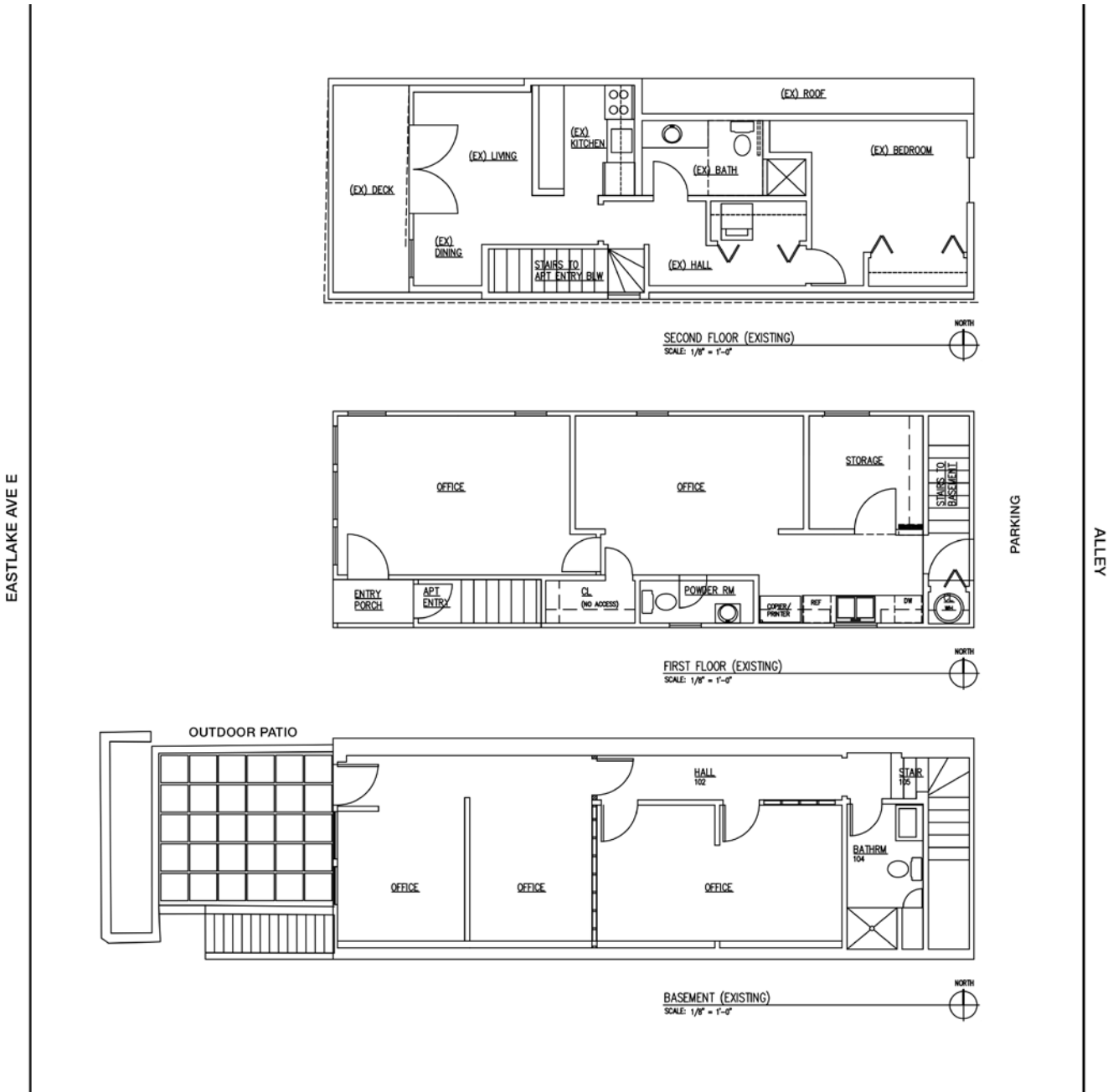
csollom@kiddermathews.com

Ken Hirata

206.296.9625

khirata@kiddermathews.com

2222 Eastlake Ave E

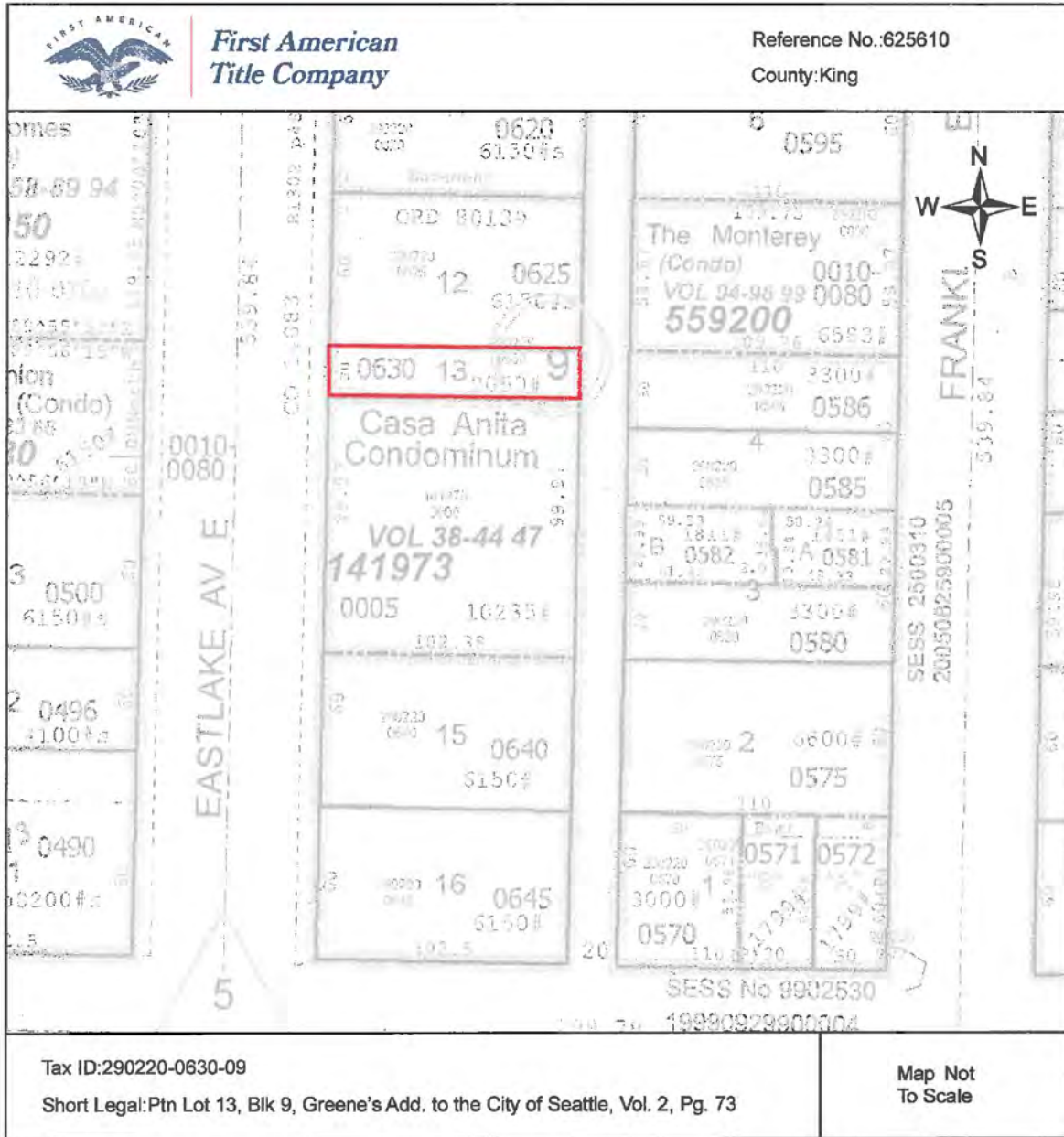


Contact

Corey Sollom
206.296.9620
csollom@kiddermathews.com

Ken Hirata
206.296.9625
khirata@kiddermathews.com

2222 Eastlake Ave E

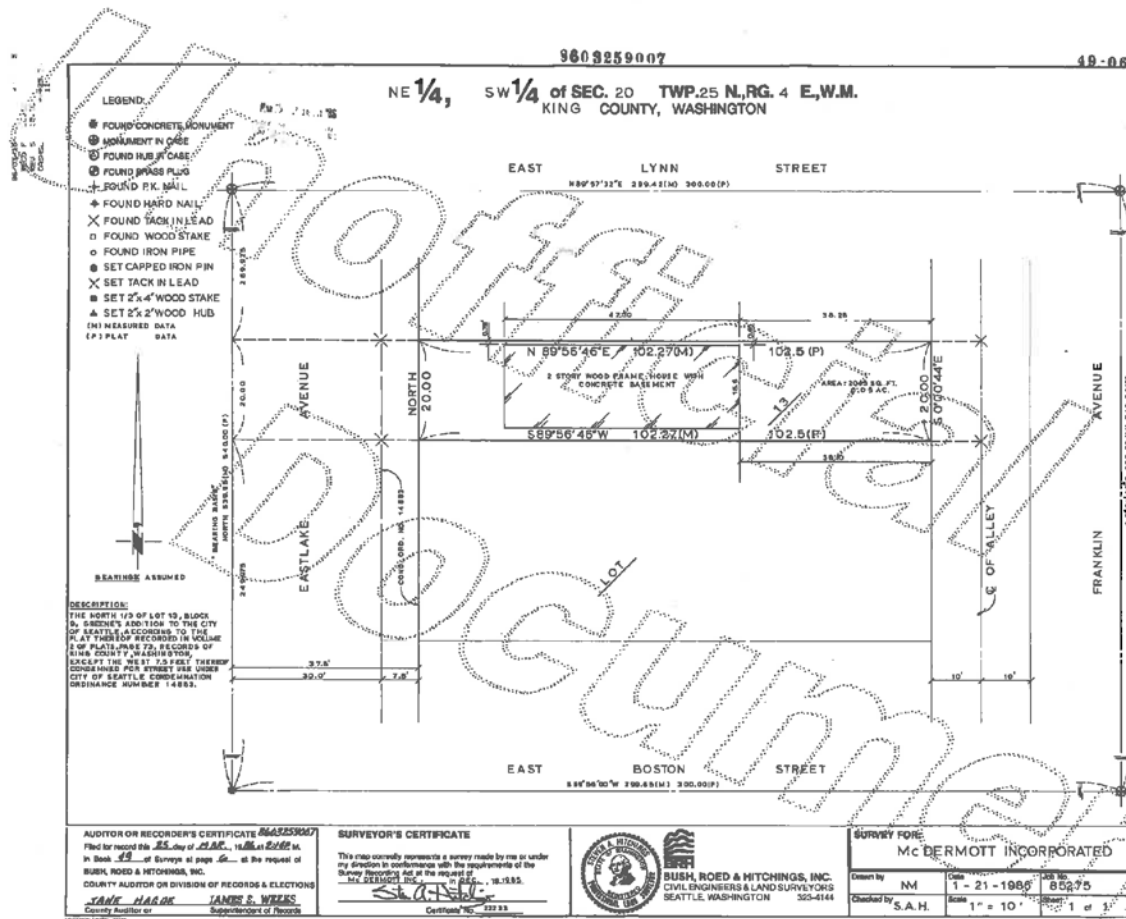


Contact

Corey Sollom
206.296.9620
csollom@kiddermathews.com

Ken Hirata
206.296.9625
khirata@kiddermathews.com

2222 Eastlake Ave E



Contact

Corey Sollom
206.296.9620
csollom@kiddermathews.com

Ken Hirata
206.296.9625
khirata@kiddermathews.com