



803

BROADWAY

Between
East 11th & 12th Streets

Size: ~2,400 SF Ground
~2,600 SF Basement

Frontage: 41 Feet on Broadway

Possession: Arranged

Asking Rent: Upon Request

Neighboring Tenants:



Comments:

- Steps from Union Square and the 4th Busiest Subway Stop in NYC
- Close Proximity to NYU
- All Uses Considered

Ridership: 4 5 6 L N Q R
35,320,623 Annually
108,440 Weekdays
143,123 Weekends

**Newmark Grubb
Knight Frank**
Retail

www.ngkf.com/retail

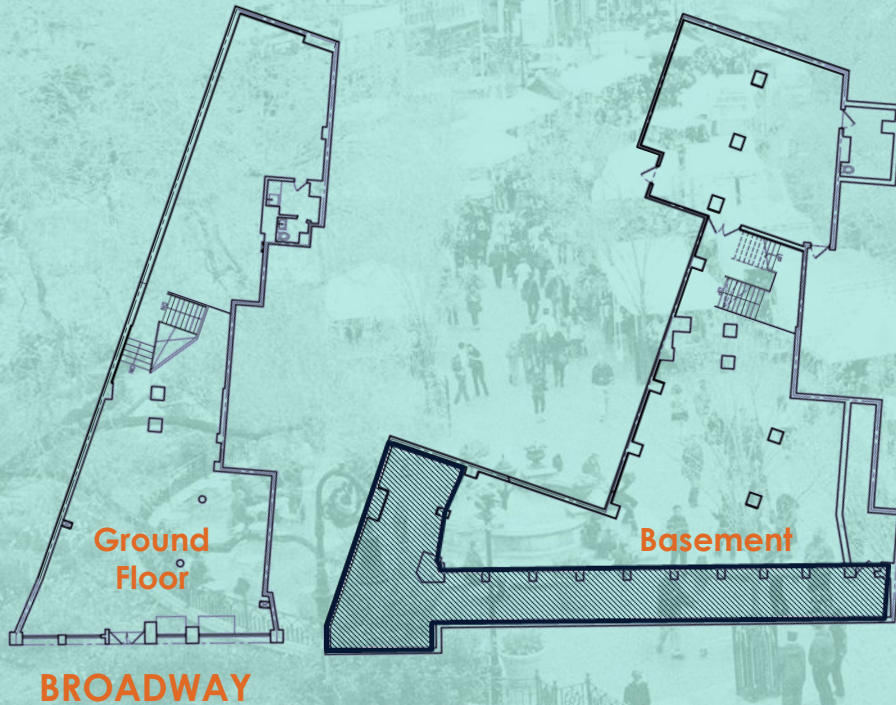


803

BROADWAY

Between
E 11th & 12th St

FLOOR PLANS



L N Q R UNION SQUARE 4 5 6



NEW YORK UNIVERSITY N R 6

**Newmark Grubb
Knight Frank**
Retail

For more information, please contact:

Stu Morden 212.372.2496 smorden@ngkf.com
Lucas Kooyman 212.372.2384 lkooyman@ngkf.com



www.ngkf.com/retail

The information contained herein has been obtained from sources deemed reliable but has not been verified and no guarantee, warranty or representation, either express or implied, is made with respect to such information. Terms of sale or lease and availability are subject to change or withdrawal without notice.