

CRYSTAL MALL

850 Hartford Turnpike Watford, CT 06385

PROPERTY

Demographics	1 mile	3 miles	5 miles
Population	2,223	36,377	81,750
Avg. HH Income	\$145,426	\$98,354	\$106,645
Total Households	874	14,441	33,571

HIGHLIGHTS

- Strategically positioned along I-95 (64,000 VPD) at the Hartford Turnpike (30,200 VPD)
- Crystal Mall is easily accessible from all of western Connecticut, just one exit from the I-95/I-395 split
- Crystal Mall is located just a short distance from Connecticut's Mystic Country area, which includes top tourist attractions such as Foxwoods and Mohegan Sun Casinos, Mystic Aquarium, and the historic Mystic Seaport

NOTES

- GLA: 535,494 SF
- Availabilities: Anchor, Inline, Outparcel
- Traffic Count: 64,000 VPD I-95
30,200 VPD Hartford Turnpike

ANCHORS

- JC Penney, Macy's (Dark), Sears (Dark) & Christmas Tree Shops



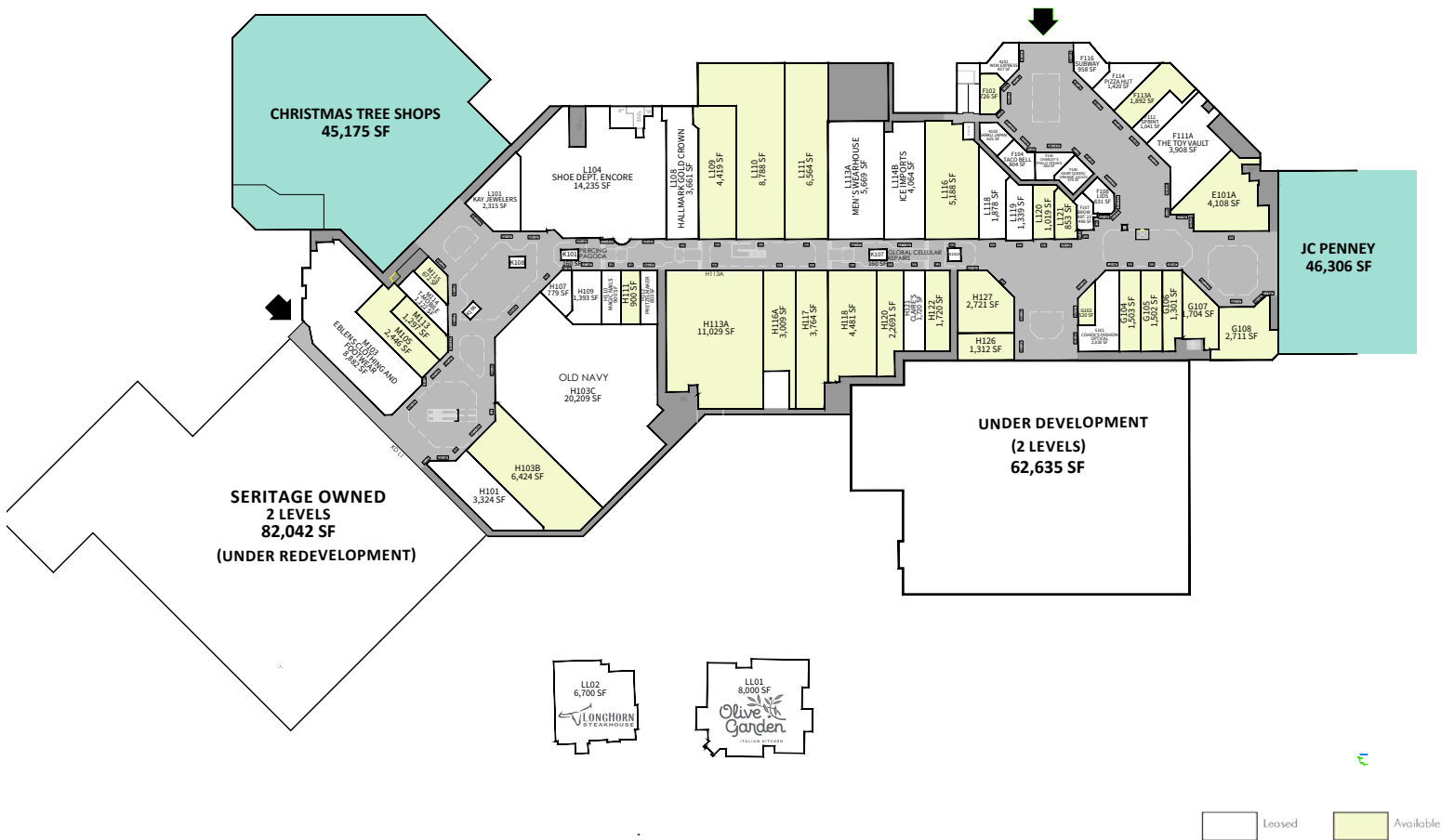
MASON
ASSET MANAGEMENT

T: 516 371.5858
E: leasing@masonam.com
150 Great Neck Road Suite 402
Great Neck, NY, 11021
www.masonam.com

CRYSTAL MALL

850 Hartford Turnpike Watford, CT 06385

LEASE PLAN LOWER LEVEL

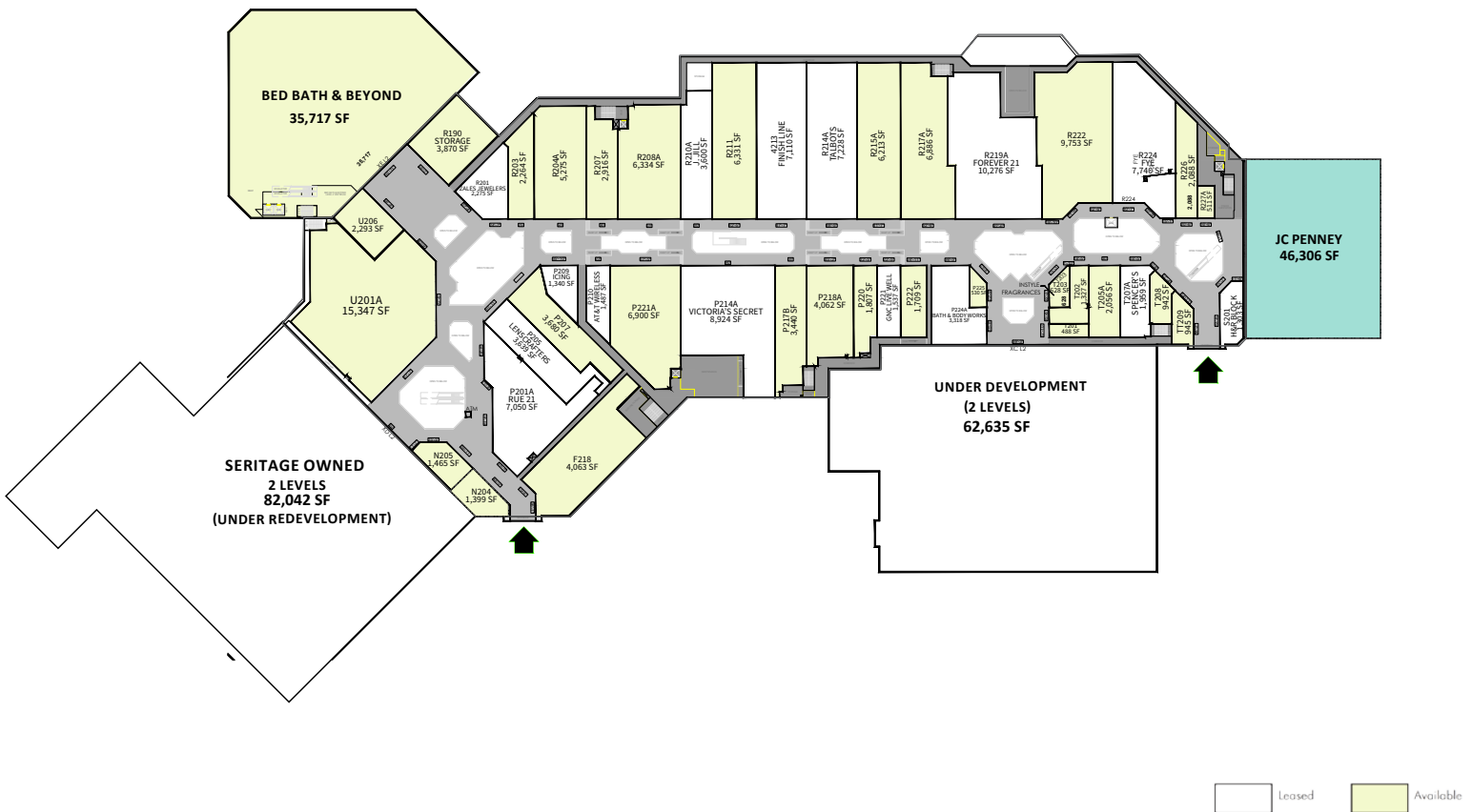


*NOT OWNED

CRYSTAL MALL

850 Hartford Turnpike Watford, CT 06385

LEASE PLAN UPPER LEVEL



*NOT OWNED



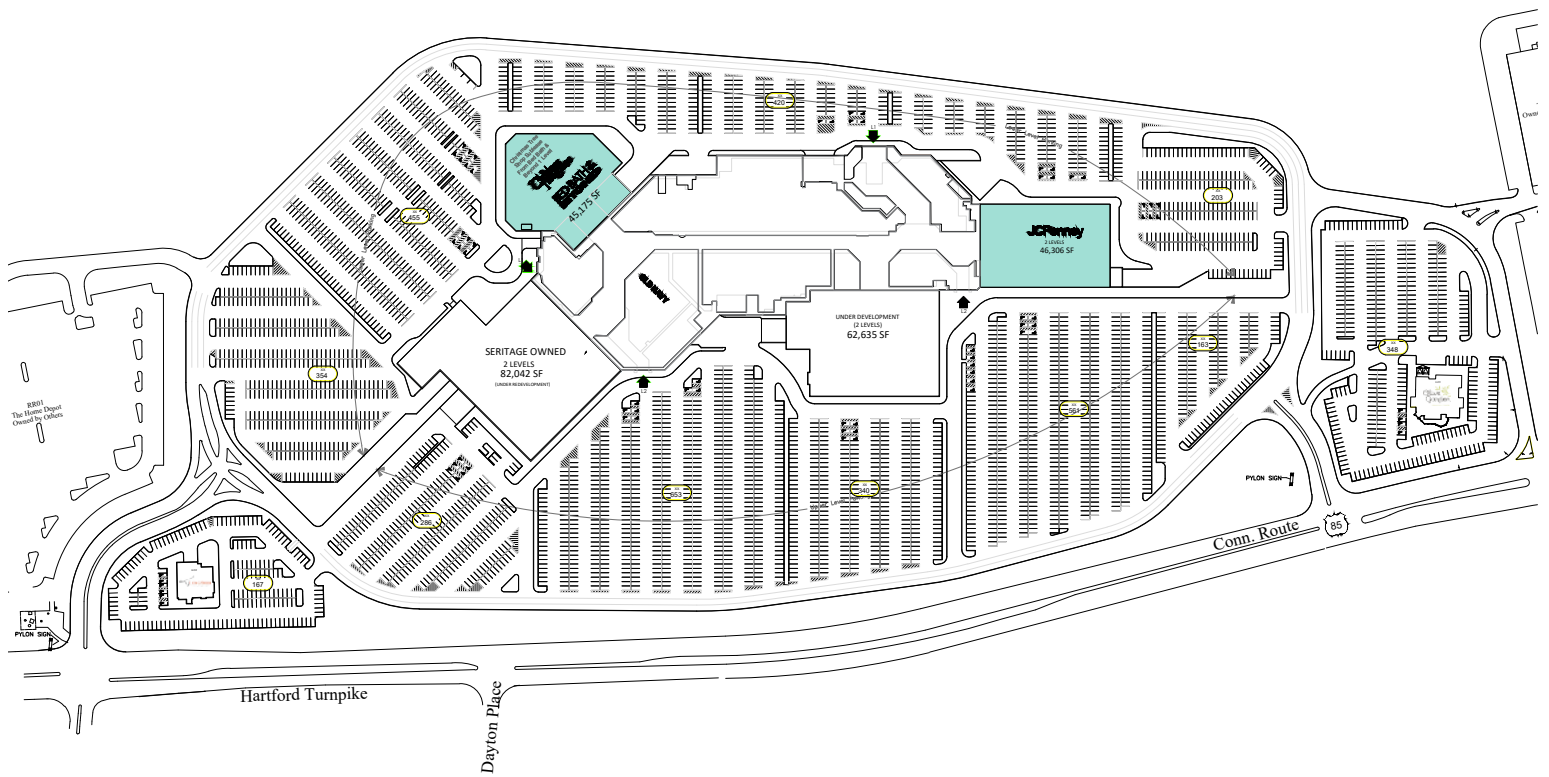
MASON
ASSET MANAGEMENT

T: 516 371.5858
E: leasing@masonam.com
150 Great Neck Road Suite 402
Great Neck, NY, 11021
www.masonam.com

CRYSTAL MALL

850 Hartford Turnpike Watford, CT 06385

SITE PLAN



*NOT OWNED



MASON
ASSET MANAGEMENT

T: 516 371.5858
E: leasing@masonam.com
150 Great Neck Road Suite 402
Great Neck, NY, 11021
www.masonam.com

CRYSTAL MALL

850 Hartford Turnpike Watford, CT 06385

RETAILER MAP



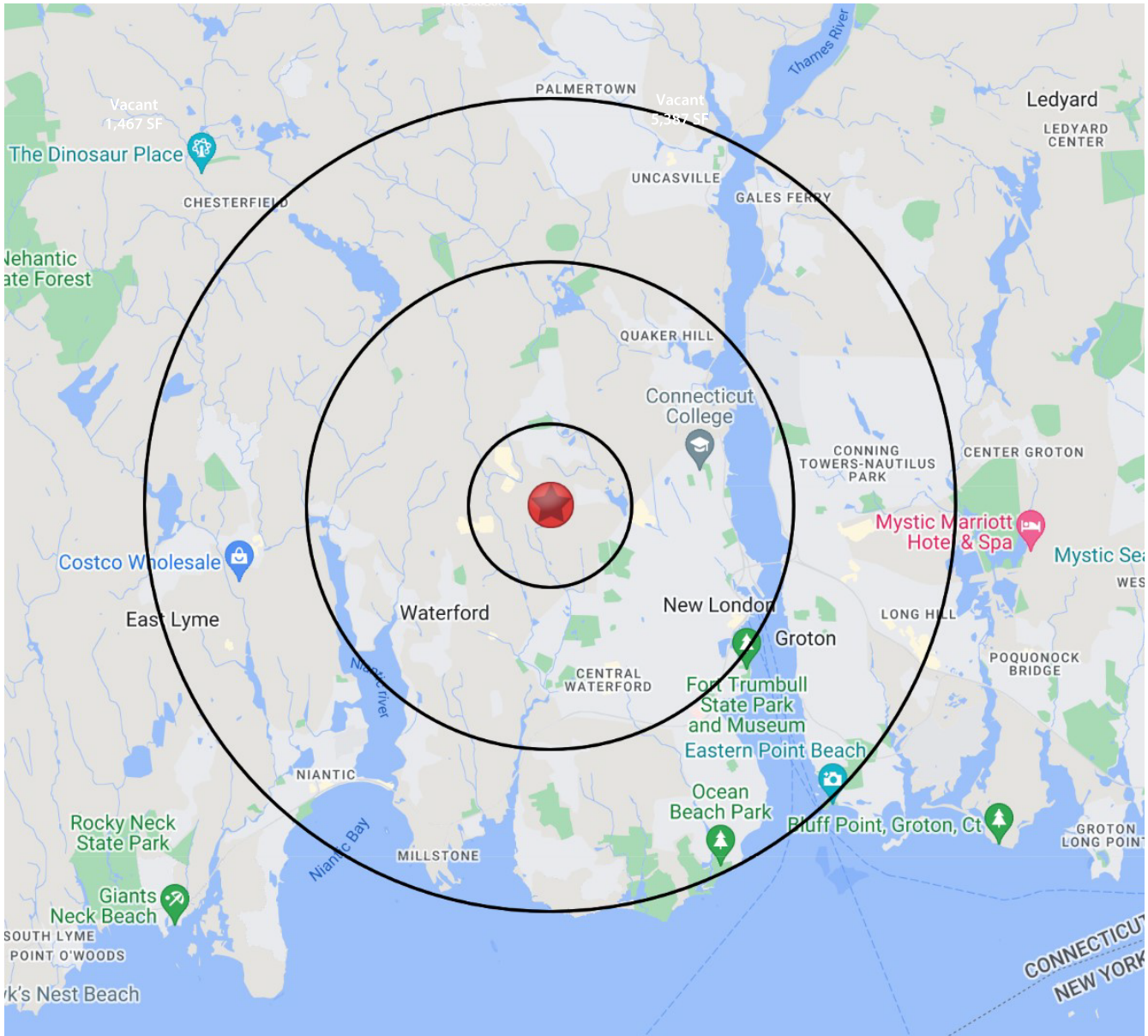
MASON
ASSET MANAGEMENT

T: 516 371.5858
E: leasing@masonam.com
150 Great Neck Road Suite 402
Great Neck, NY, 11021
www.masonam.com

CRYSTAL MALL

850 Hartford Turnpike Waterford, CT 06385

RADIUS MAP



MASON
ASSET MANAGEMENT

T: 516 371.5858
E: leasing@masonam.com
150 Great Neck Road Suite 402
Great Neck, NY, 11021
www.masonam.com