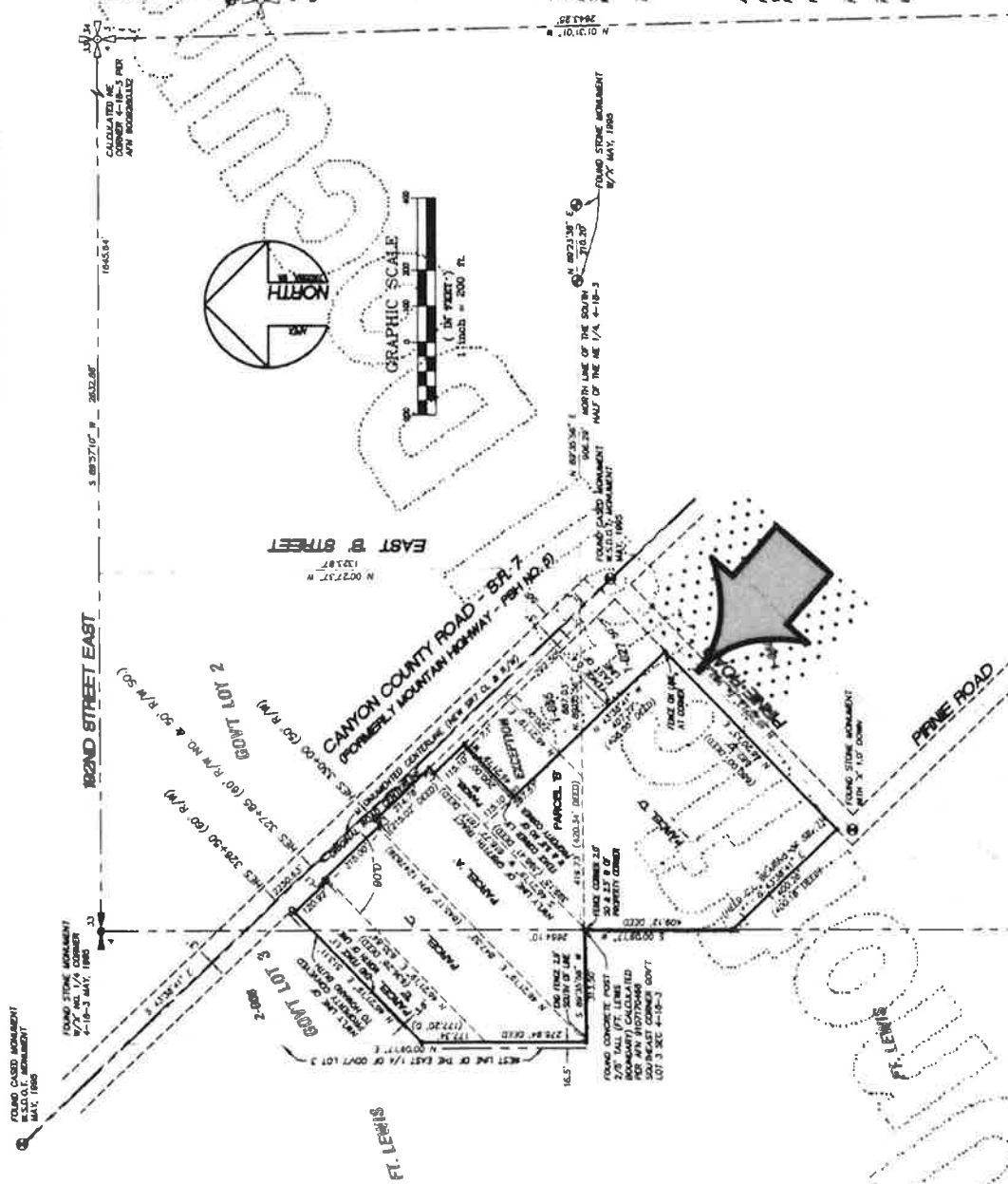


RECORD OF SURVEY

A PORTION OF
THE SW 1/4 OF THE NW 1/4 OF SEC. 27, TWP. 18 N.,
RNG. 2 W. OF THE W.M., PIERCE COUNTY, WASHINGTON.



BASIS OF BEARING
MAGNETIC NORTH (M) AND GEODESIC NORTH (G) VALUES OBTAINED FROM THE NATIONAL MAGNETIC DEVIATION TABLE FOR THE YEAR 2008.

- LEGEND**
- ▲ MONUMENT FOUND AS NOTED
 - CALCULATED MONUMENT POSITION
 - SET BEARS & CAP L.C.P. 100002
 - FOUND MONUMENT PER AS NOTED

LINE TABLE

NO.	BEARING	DISTANCE
L1	S 48° 21' 19" W	10.00'
L2	S 48° 21' 19" W	20.00'
L3	S 48° 21' 19" W	20.00'

SURVEYOR'S CERTIFICATE
THIS MAP CORRECTLY REPRESENTS A SURVEY MADE BY ME OR UNDER MY CLOSE PERSONAL SUPERVISION AND IN ACCORDANCE WITH THE REQUIREMENTS OF THE SURVEYING ACT AS AMENDED BY THE LEGISLATURE OF THE STATE OF WASHINGTON.
I, Jim Ferris,
REGISTERED SURVEYOR, No. 10165,
DATE: 10/10/05

AUDITOR'S CERTIFICATE
FILED FOR RECORD THIS 3 DAY OF February 2005
AT SEASIDE, WASHINGTON
RECORDING NUMBER: 200511015006
FILED BY: Jim Ferris
COUNTY CLERK
PIERCE COUNTY, WASHINGTON

Apex Engineering
2800 South 30th Street, Suite 120
Tacoma, WA 98409
(253) 473-0884 FAX (253) 473-0888

JOB NO 29802

For reference only, not for re-sale.

SHEET 1 OF 2

200511015006