

FOR LEASE

Office Space - Ground Floor - Turnpike Feeder Rd., Ft Pierce



SLC Commercial
Realty & Development



LOCATION: 5100 Turnpike Feeder Road., Ft. Pierce, FL

DESCRIPTION: 2,039 s/f available on the ground floor, formerly a dentist office. Suitable for medical or dental with five offices, breakroom, reception and waiting rooms, conference room, and plenty of storage space.

ZONING: CN - Commercial Neighborhood

COMMENTS: Join PNC Bank in a prime Ft. Pierce location. Lease space is located in attractive building, on the ground floor, next to PNC Bank. Lots of parking.

LEASE RATE: \$16.00 s/f gross

Carol Bush, CCIM, Broker Associate

Office 772.220.4096

Cell Phone 561.719.0746

cbush@slccommercial.com

SLC COMMERCIAL | 2488 SE Willoughby Blvd, Stuart, FL 34994 | 772.220.4096 | www.slccommercial.com

The information contained herein has been obtained from sources believed to be reliable, but no warranty or representation, expressed or implied, is made. All sizes and dimensions are approximate. Any prospective buyer should exercise prudence and verify independently all significant data and property information. This is NOT an offer of sub-agency or co-brokerage.

Interior Photos



SLC Commercial
Realty & Development



SLC COMMERCIAL | 2488 SE Willoughby Blvd, Stuart, FL 34994 | 772.220.4096 | www.slccommercial.com

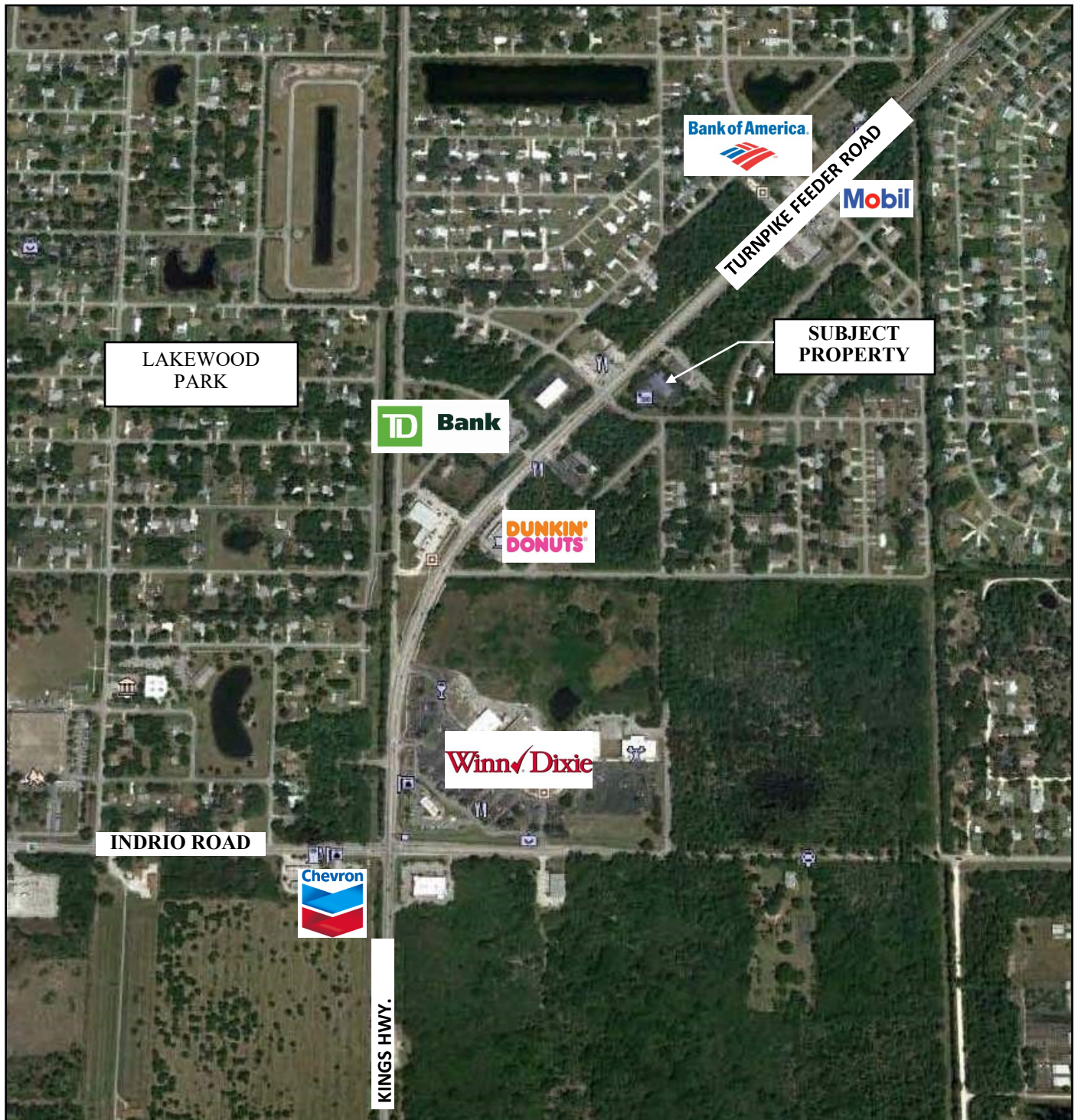
The information contained herein has been obtained from sources believed to be reliable, but no warranty or representation, expressed or implied, is made. All sizes and dimensions are approximate. Any prospective buyer should exercise prudence and verify independently all significant data and property information. This is NOT an offer of sub-agency or co-brokerage.



The information contained herein has been obtained from sources believed to be reliable, but no warranty or representation, expressed or implied, is made. All sizes and dimensions are approximate. Any prospective buyer should exercise prudence and verify independently all significant data and property information. This is NOT an offer of sub-agency or co-brokerage.



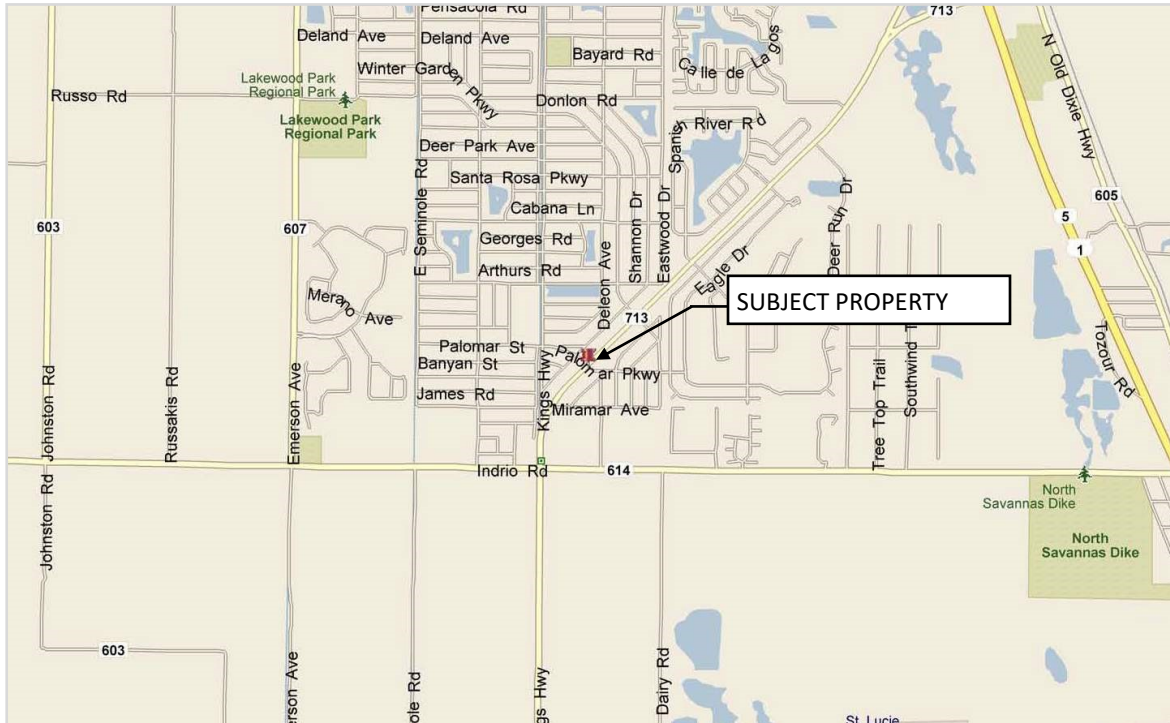
SPANISH
LAKES





SLC Commercial
Realty & Development

Location Maps



SLC COMMERCIAL | 2488 SE Willoughby Blvd, Stuart, FL 34994 | 772.220.4096 | www.slccommercial.com

The information contained herein has been obtained from sources believed to be reliable, but no warranty or representation, expressed or implied, is made. All sizes and dimensions are approximate. Any prospective buyer should exercise prudence and verify independently all significant data and property information. This is NOT an offer of sub-agency or co-brokerage.

Disclaimer

This presentation package has been prepared by the company representing the property for informational purposes only and does not purport to contain all information necessary to reach a purchase decision.

The information herein has been given by the Owner or other sources believed to be reliable, but it has not necessarily been independently verified by the Company representing the property and neither its accuracy nor its completeness is guaranteed.

This information is subject to errors, omissions, changes, prior sale or withdrawal without notice by the Company representing the property and does not constitute a recommendation, endorsement or advice as to the value for the purchase of any property. Each prospective lessee or purchaser is to rely upon his/her own investigation, evaluation and judgment as to the advisability of leasing or purchasing the property.

Furthermore, any financial information and calculations presented in this analysis are believed to be accurate, but are not guaranteed and are intended for the purposes of projection and analysis only. The user of this financial information contained herein