

725-731 East 7th Street | St. Paul

OFFICE or RETAIL
FOR LEASE



— Historic Stutzman Building —

Excellent opportunity for unique and charming
space in an East St. Paul landmark building

CONTACT BROKER FOR INFORMATION & TOUR

Ted LaFave • 612.875.3858 • tlafave@grandrea.com • www.grandrea.com

GRAND
REAL ESTATE ADVISORS

FOR LEASE | 725 E. 7th Street • St. Paul, MN 55106

BUILDING FEATURES

- Abundant natural light
- Building signage available
- Lower level office or retail space with original stone and brick + front and rear doors
- Upper floor office space features wood floors + stone/break features + front & rear doors
- One block to Metro State University and Mississippi Market
- Home to the Swede Hollow Cafe
- Prime location in the Dayton's Bluff Neighborhood



BUILDING SIGNAGE
AVAILABLE

FLEXIBLE LEASE
TERMS

OPEN
LAYOUTS

AVAILABLE SPACE FEATURES

Suite 729
745 SF
Retail or Office

Located on the lower level, this space features original brick and stone walls, new carpet and paint, private restroom.
Dedicated front and rear doors.

ASKING RENT (GROSS)

\$1,500/month



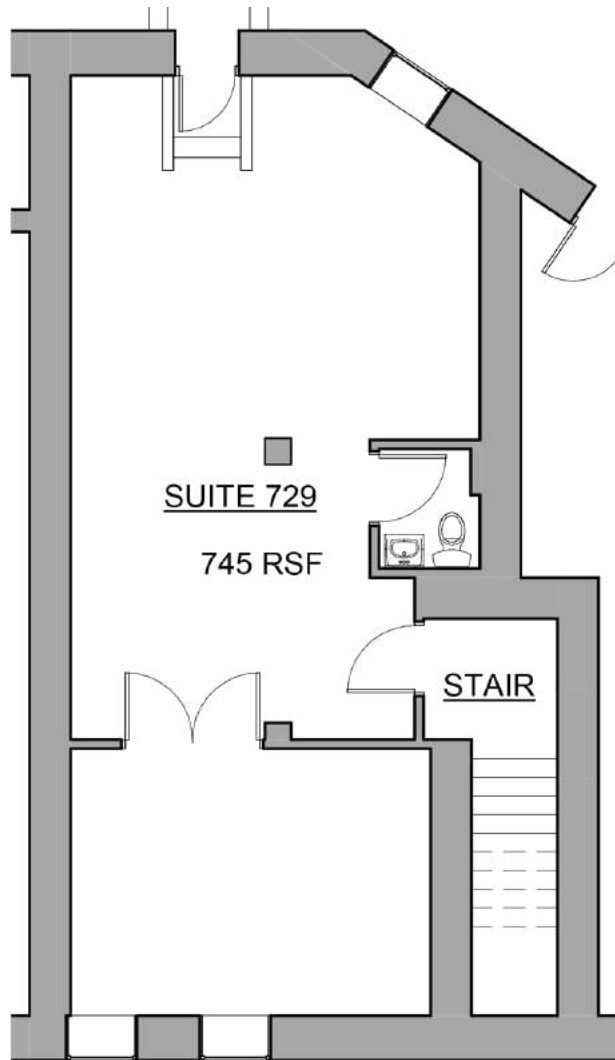
CONTACT BROKER FOR INFORMATION & TOUR

Ted LaFave • 612.875.3858 • tlafave@grandrea.com • www.grandrea.com

GRAND
REAL ESTATE ADVISORS

FOR LEASE | 725 E. 7th Street • St. Paul, MN 55106

LOWER LEVEL

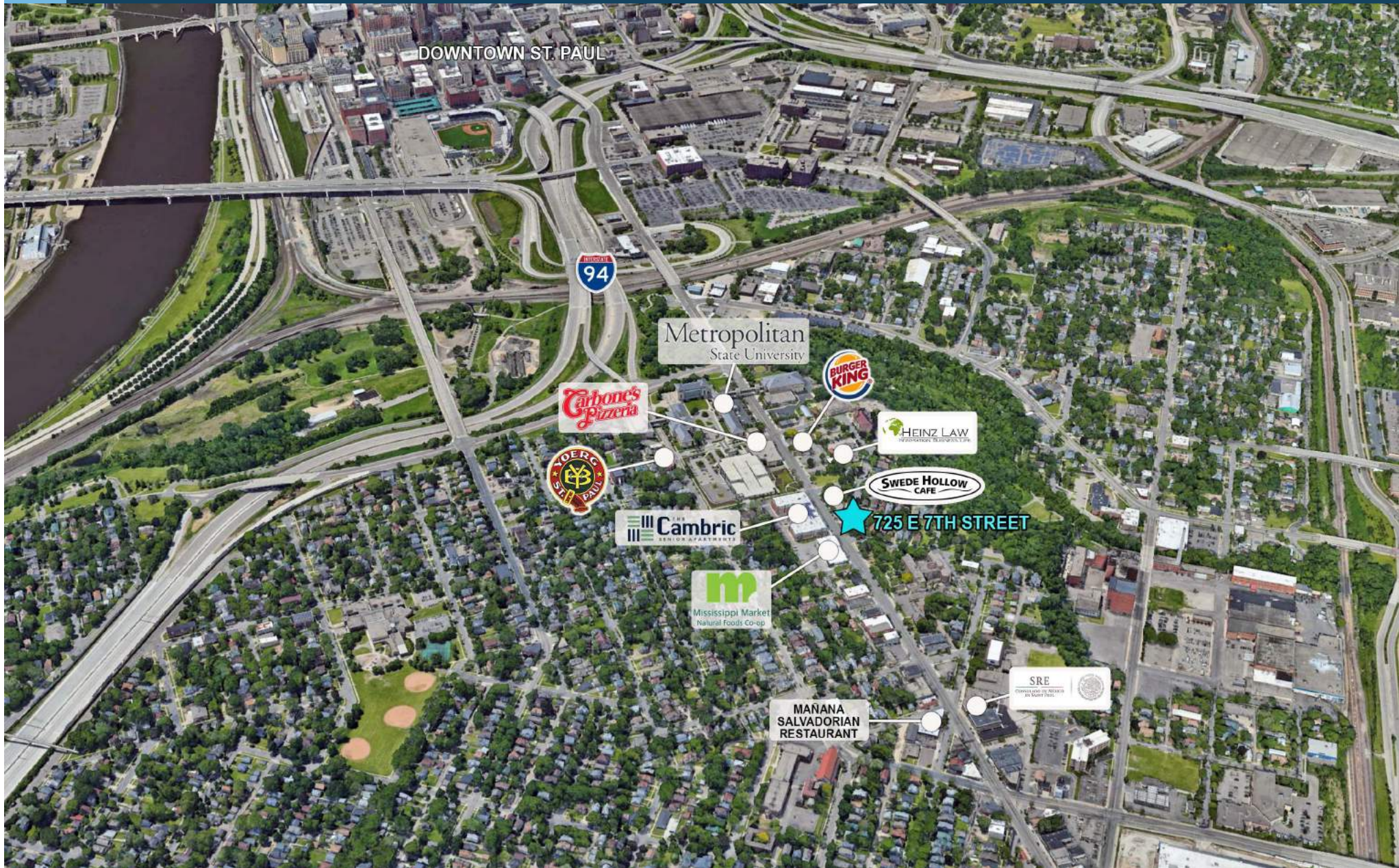


CONTACT BROKER FOR INFORMATION & TOUR

Ted LaFave • 612.875.3858 • tlafave@grandrea.com • www.grandrea.com

GRAND
REAL ESTATE ADVISORS

FOR LEASE | 725 E. 7th Street • St. Paul, MN 55106

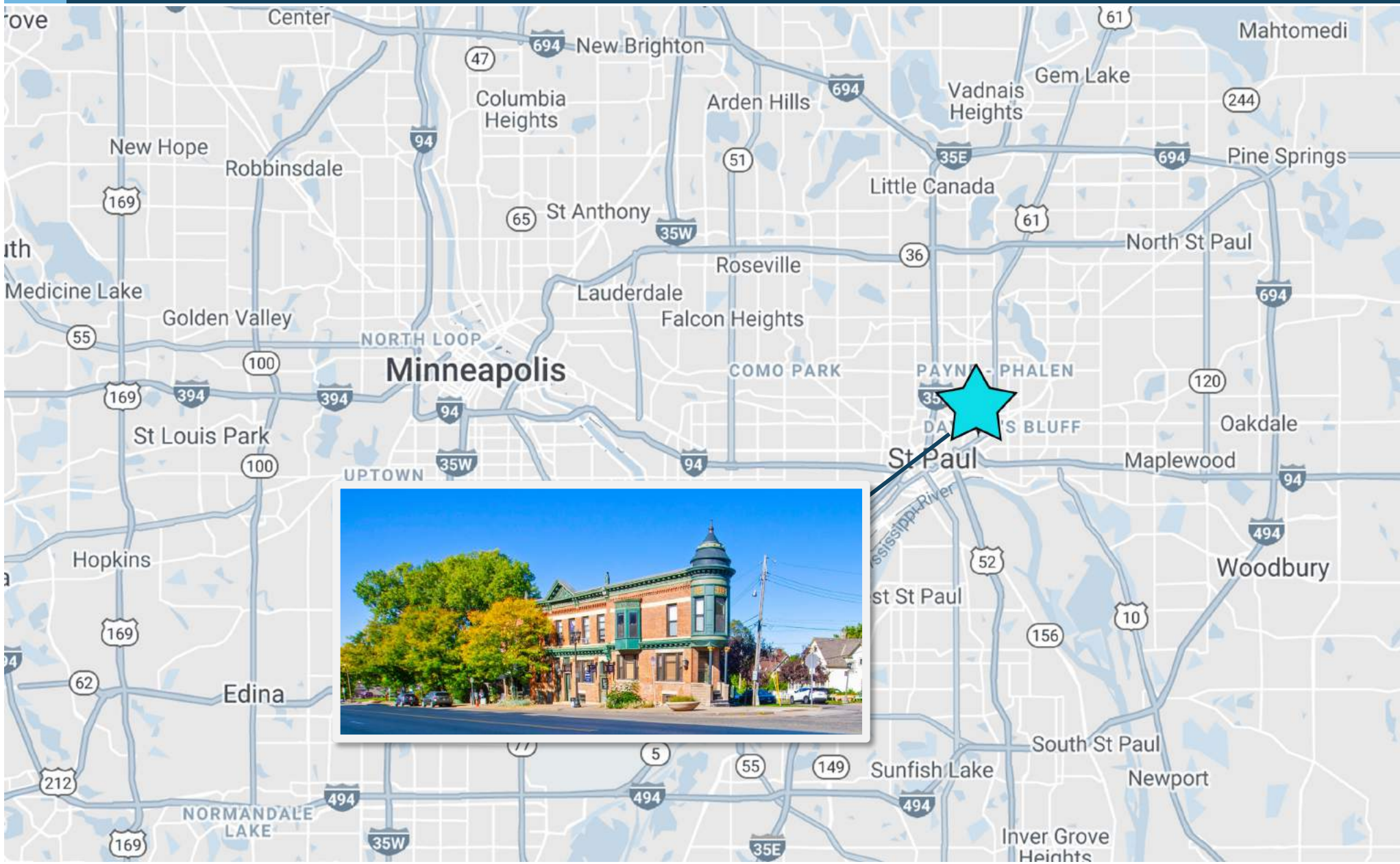


CONTACT BROKER FOR INFORMATION & TOUR

Ted LaFave • 612.875.3858 • tlafave@grandrea.com • www.grandrea.com

GRAND
REAL ESTATE ADVISORS

FOR LEASE | 725 E. 7th Street • St. Paul, MN 55106



CONTACT BROKER FOR INFORMATION & TOUR

Ted LaFave • 612.875.3858 • tlafave@grandrea.com • www.grandrea.com

GRAND
REAL ESTATE ADVISORS