

27301 DEQUINDRE ROAD
MADISON HEIGHTS, MICHIGAN

OFFICE FOR SALE OR LEASE
874 – 47,208 Square Feet Available



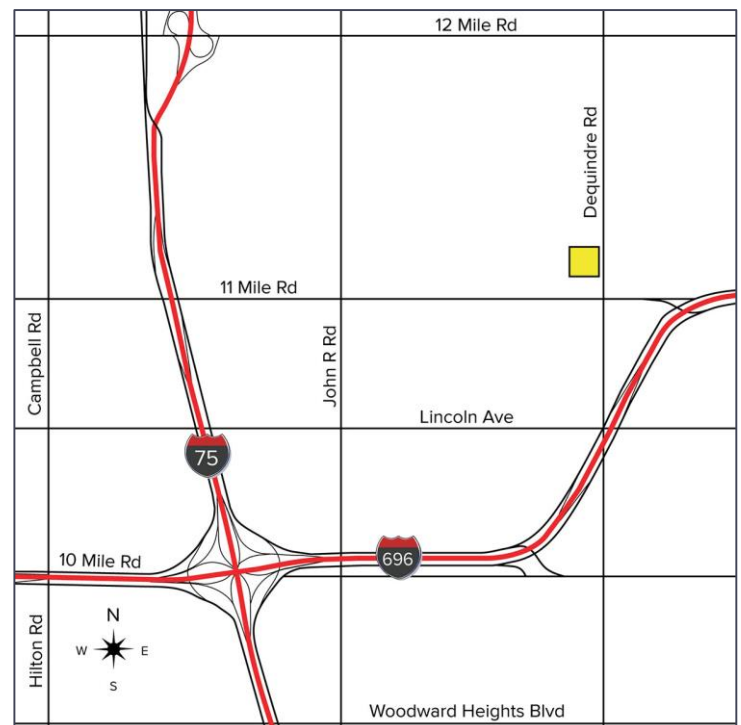
**SIGNATURE
ASSOCIATES**
KNOW SIGNATURE | KNOW RESULTS

FILL BUILDING EAST



PROPERTY FEATURES

- 874 – 47,208 square feet available
- First time on market for sale
- Recent renovations
- Very professional and well-maintained 3-story medical/office building
- Restaurant on premises
- Excellent visibility and location next to St. John Macomb – Oakland Hospital
- 165 parking spaces
- Lease Rate: \$12.60/sq.ft. G+E
- Sale Price: \$1,699,000 (\$35.99/sq.ft.)



For more information, please contact:

JEFFREY TREPECK
(248) 359 0626
jtrepeck@signatureassociates.com

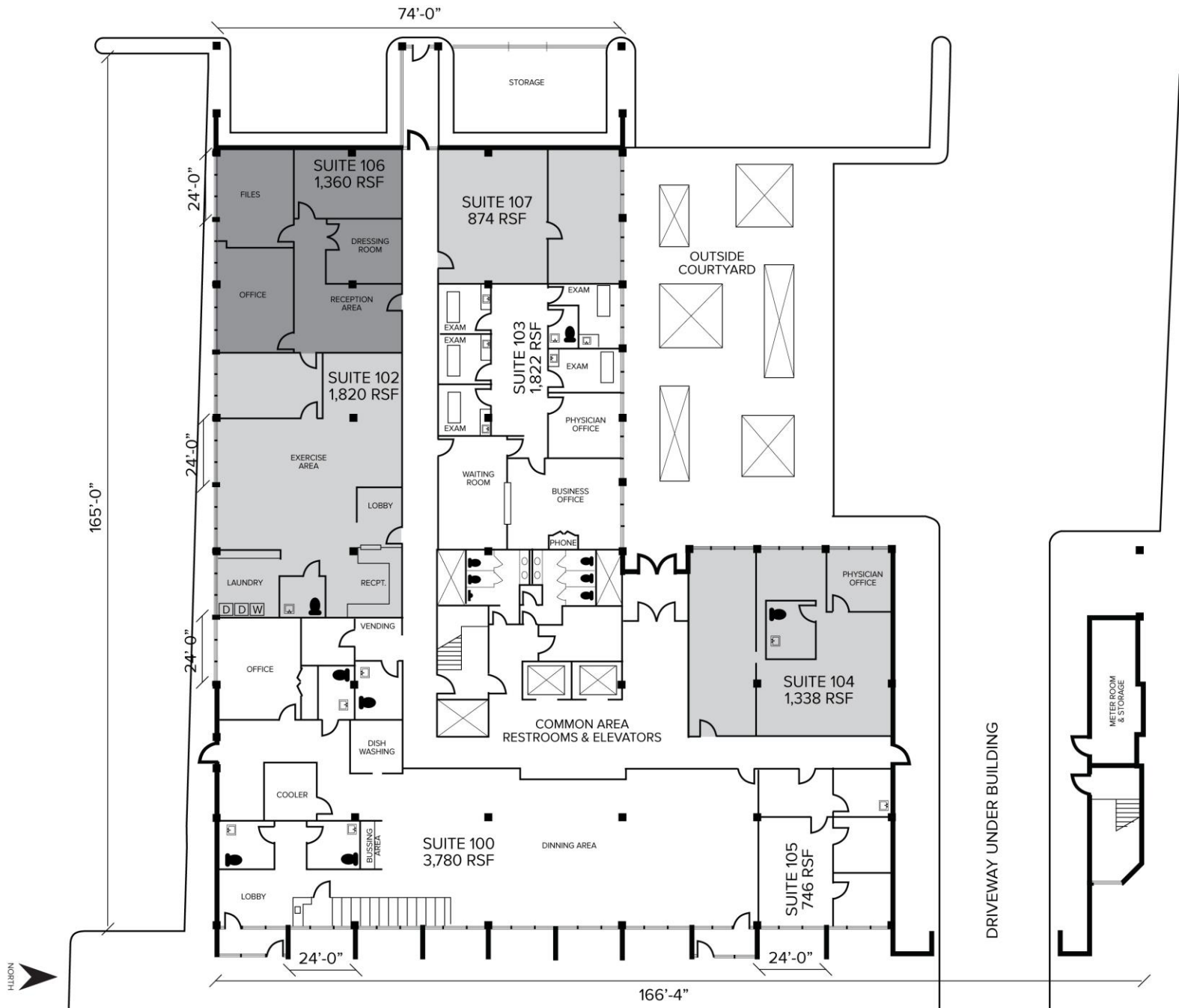
SIGNATURE ASSOCIATES
One Towne Square, Suite 1200
Southfield, MI 48076
www.signatureassociates.com

27301 Dequindre Road – Madison Heights, Michigan

Office For Sale or Lease

874 – 47,208
Square Feet
AVAILABLE

First Floor

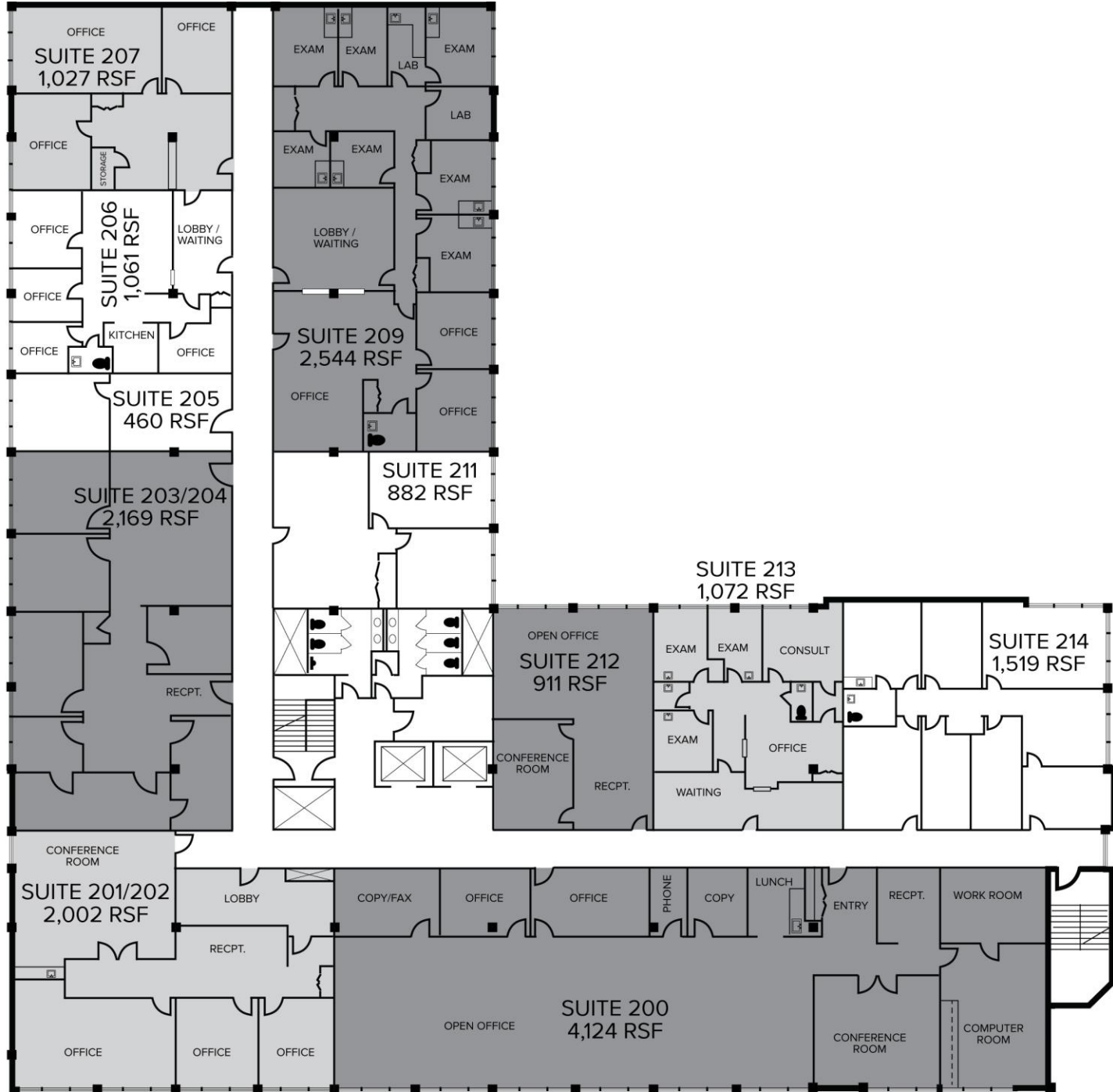


For more information, please contact:

JEFFREY TREPECK
(248) 359 0626
jtrepeck@signatureassociates.com

SIGNATURE ASSOCIATES
One Towne Square, Suite 1200
Southfield, MI 48076
www.signatureassociates.com

Second Floor



For more information, please contact:

JEFFREY TREPECK
(248) 359 0626
jtrepeck@signatureassociates.com

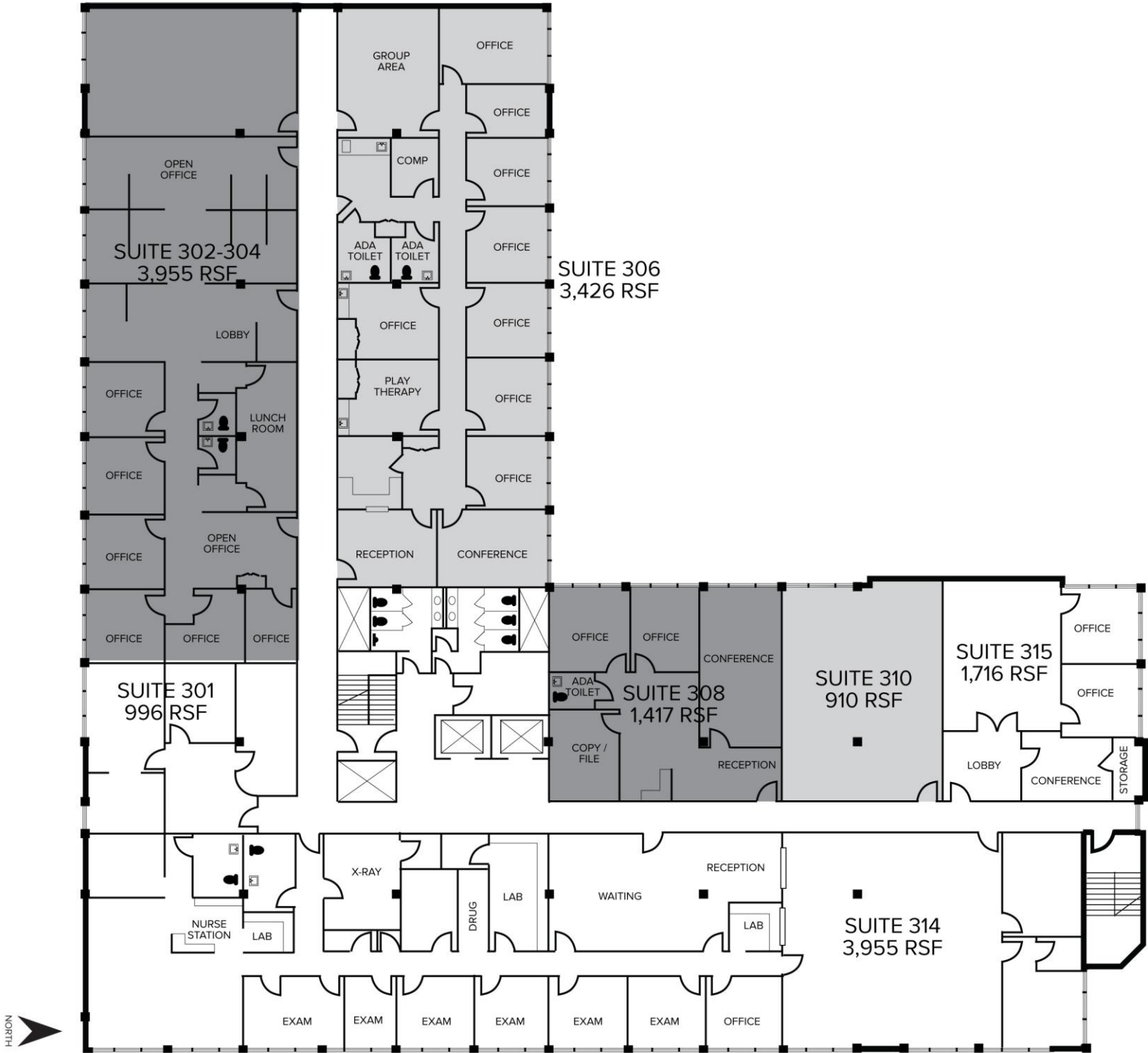
SIGNATURE ASSOCIATES
One Towne Square, Suite 1200
Southfield, MI 48076
www.signatureassociates.com

27301 Dequindre Road – Madison Heights, Michigan

Office For Sale or Lease

874 – 47,208
Square Feet
AVAILABLE

Third Floor



For more information, please contact:

JEFFREY TREPECK
(248) 359 0626
jtrepeck@signatureassociates.com

SIGNATURE ASSOCIATES
One Towne Square, Suite 1200
Southfield, MI 48076
www.signatureassociates.com