

# ±13,267 SF OF OFFICE SPACE FOR LEASE

303 NORTH D STREET, SAN BERNARDINO, CA

FOR LEASE



## FEATURES:

- ±13,267 SF, Entire 3rd Floor
- Located in the Heart of Downtown San Bernardino
- Secured Elevator Access
- Located Within Walking Distance of the San Bernardino Court House
- Ideal Space for Law Firm, Accounting, Government Use and Educational Institutions
- Asking Lease Rate \$1.50 MG



LEE &  
ASSOCIATES®

COMMERCIAL REAL ESTATE SERVICES

3535 Inland Empire Blvd. • Ontario, CA 91764

ph: 909.989.7771 fx: 909.944.8250

www.lee-assoc.com | Corporate ID # 00976995

Greg Martin

909.373.2904

gmartin@lee-assoc.com

BRE # 01001749

All information furnished regarding property for sale, rental or financing is from sources deemed reliable, but no warranty or representation is made to the accuracy thereof and same is submitted to errors, omissions, change of price, rental or other conditions prior to sale, lease or financing or withdrawal without notice. No liability of any kind is to be imposed on the broker herein.

# ±13,267 SF OF OFFICE SPACE FOR LEASE

303 NORTH D STREET, SAN BERNARDINO, CA

FOR LEASE



LEE &  
ASSOCIATES®

COMMERCIAL REAL ESTATE SERVICES

3535 Inland Empire Blvd. • Ontario, CA 91764

ph: 909.989.7771 fx: 909.944.8250

www.lee-assoc.com | Corporate ID # 00976995

Greg Martin

909.373.2904

gmartin@lee-assoc.com

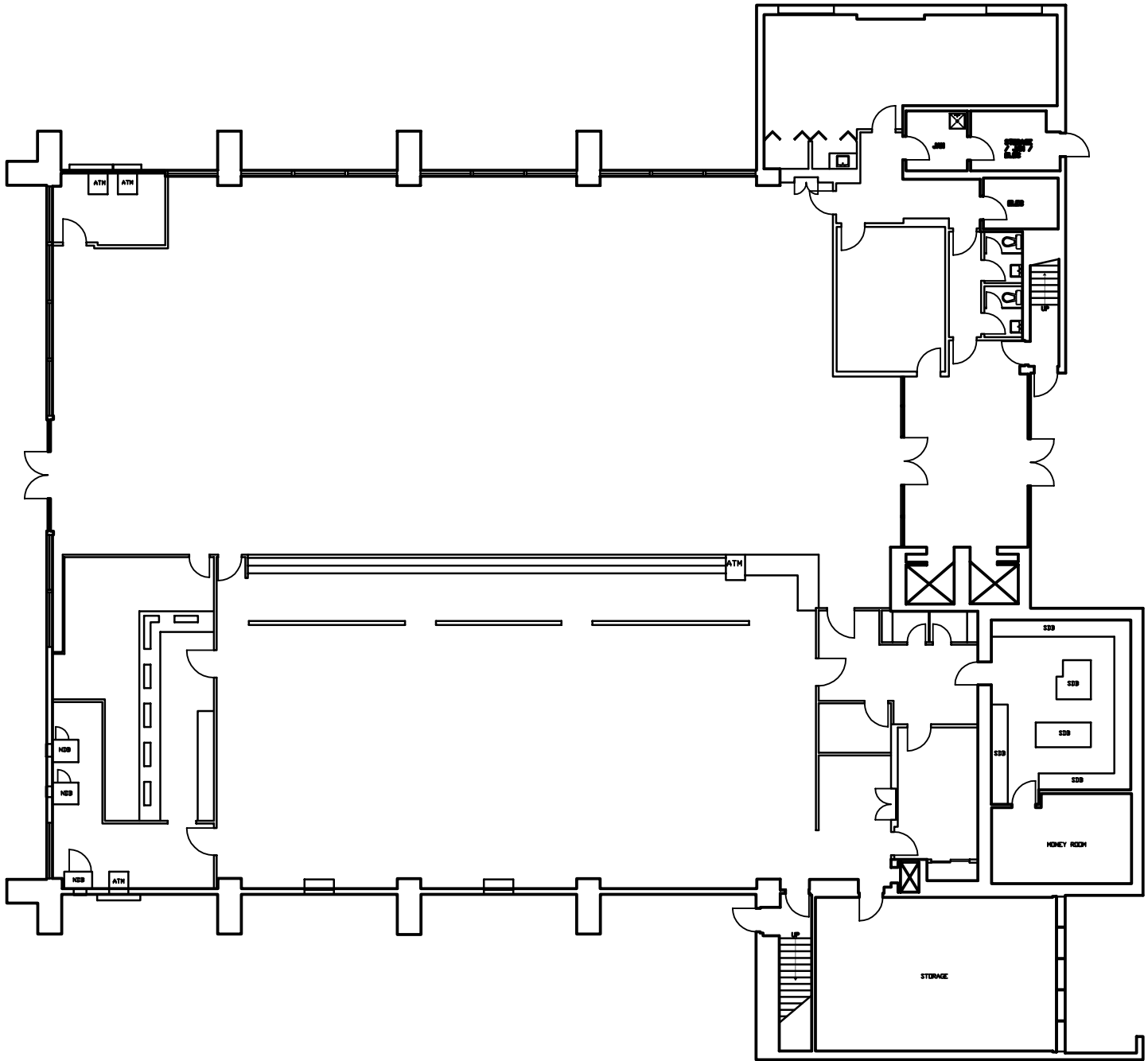
BRE # 01001749

All information furnished regarding property for sale, rental or financing is from sources deemed reliable, but no warranty or representation is made to the accuracy thereof and same is submitted to errors, omissions, change of price, rental or other conditions prior to sale, lease or financing or withdrawal without notice. No liability of any kind is to be imposed on the broker herein.

# ±13,267 SF OF OFFICE SPACE FOR LEASE

303 NORTH D STREET, SAN BERNARDINO, CA

FOR LEASE



LEE & ASSOCIATES®

COMMERCIAL REAL ESTATE SERVICES

3535 Inland Empire Blvd. • Ontario, CA 91764

ph: 909.989.7771 fx: 909.944.8250

www.lee-assoc.com | Corporate ID # 00976995

Greg Martin

909.373.2904

gmartin@lee-assoc.com

BRE # 01001749

All information furnished regarding property for sale, rental or financing is from sources deemed reliable, but no warranty or representation is made to the accuracy thereof and same is submitted to errors, omissions, change of price, rental or other conditions prior to sale, lease or financing or withdrawal without notice. No liability of any kind is to be imposed on the broker herein.