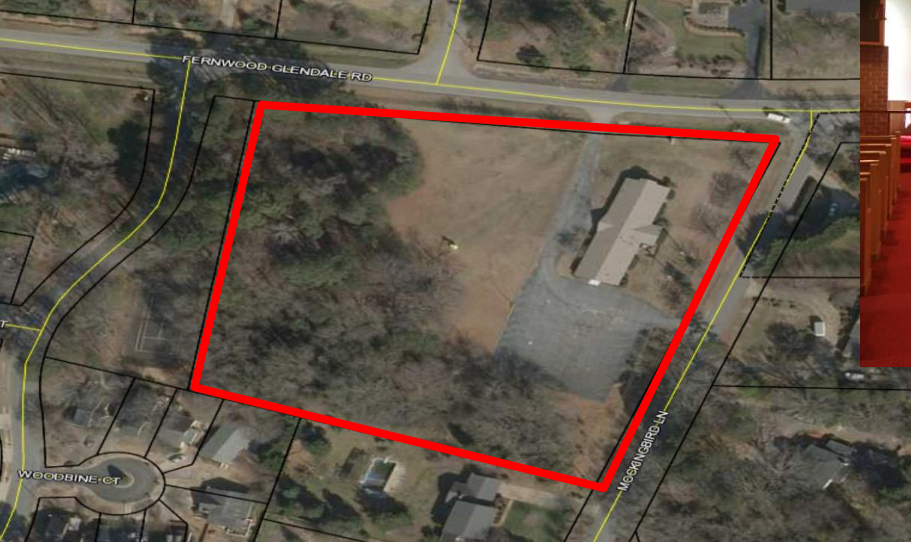




SPENCER/HINES
P R O P E R T I E S

CHURCH & LAND

1645 Fernwood Glendale Road
Spartanburg, SC 29307



PROPERTY FEATURES

- +/- 5200 sf church on +/- 4.79 ac
- Spartanburg County Tax Map #: 7-14-01-022.01
- Zoned R-15 Single Family Residential
- Located 2 miles from Hillcrest Shopping Center
- Frontage on both Fernwood Glendale Road and Mockingbird Lane
- Sanctuary for +/- 100 people, dining room, kitchen, office, nursery, library, classroom, and storage areas
- All utilities on site
- Signage on Fernwood Glendale Rd.
- +/- 32 paved parking spots with abundant grass lot parking areas and room to expand

CONTACT

Mike Tan 864.357.1136
miket@spencerhines.com
Ben Hines 864.542.4777
benhines@spencerhines.com

WWW.SPENCERHINES.COM

COMMERCIAL REAL ESTATE SALES, LEASING, & INVESTMENTS

380 S. Pine Street, Spartanburg, SC - 864.583.1001

No warranty or representation, expressed or implied, is made to the accuracy of the information contained herein, and the same is submitted subject to errors, omissions, change of price, rental or other conditions, imposed by the principles.

SALE PRICE: \$295,000



SPENCER/HINES
P R O P E R T I E S

CHURCH & LAND

1645 Fernwood Glendale Road
Spartanburg, SC 29307



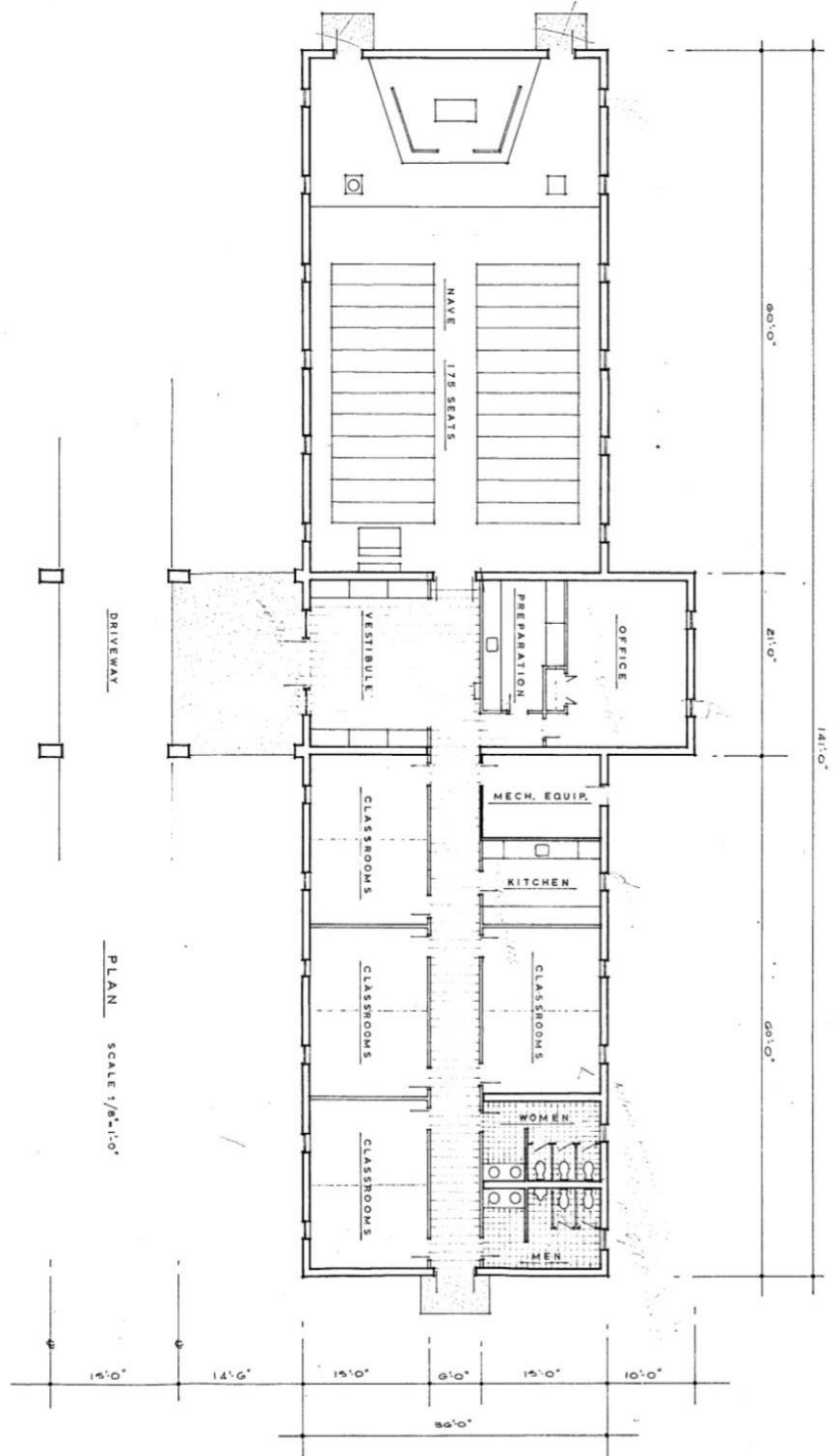
No warranty or representation, expressed or implied, is made to the accuracy of the information contained herein, and the same is submitted subject to errors, omissions, change of price, rental or other conditions, imposed by the principles.



SPENCER/HINES
P R O P E R T I E S

CHURCH & LAND

1645 Fernwood Glendale Road
Spartanburg, SC 29307



LAMB OF GOD LUTHERAN CHURCH	FRIEDRICH H. SCHMITT, F.A.R.A. ARCHITECT	SCALE	DATE	DRAWN BY	APPROVED	JOB NO.
		1/8" = 1'-0"	JUNE 66	TRF		270-66
PLAN		REVISIONS				5,250 ±