



Restaurant Opportunity

Developed by:



Retail Leased by:



CENTRO



Office:
320k SF



Retail:
6,615 SF
(divisible)



Delivery:
Q2 2021



East Austin

Area Amentities

Hotels

- Fairmont Austin
- Heywood Hotel
- Hilton Austin
- Hotel Eleven
- Hotel Van Zandt
- Native Hostel
- Peregrine Hotel
- ARRIVE Hotel

Residential

- 1305 Lofts
- 1615 E 7th St
- Corazon
- Eastside Station
- Saltillo Lofts
- 6th & Brushy
- Spire East 5th
- The Arnold
- Candela
- Indie

Offices

- 1021 E 7th
- 2021 E 5th
- 310 Comal
- 501 Studios
- 901 E 6th
- Saltillo Office
- 1645 E 6th (C3 Presents)

Food & Drinks

- Angie's Mexican Restaurant
- Banger's Sausage House & Beer Garden
- Blue Dahlia Bistro
- Brew & Brew
- Buenos Aires Café
- Bufalina
- Cenote
- Chicon
- Clive Bar
- Container Bar
- Counter Cafe
- Cuvée Coffee
- East Side Pies
- Easy Tiger
- El Chilito
- El Naranjo
- Emmer & Rye
- Flat Track Coffee
- Franklin BBQ
- Fukumoto
- G'Raj Mahal
- Geraldine's
- Grackle
- Hi Hat Public House
- Hillside Farmacy
- Il Brutto
- Juan in a Million
- Kuneho
- la Barbecue
- Launderette
- Lazarus Brewing Co.
- Lou's
- Lustre Pearl
- Mr. Natural
- Old Thousand
- Oseyo
- Salt & Time
- Scoot Inn
- Shangri-La
- Suerte
- Takoba
- Tamale House
- Texas Coffee Traders
- The B's Kitchen
- The Liberty
- The White Horse
- Veracruz
- Via 313 Pizza
- Violet Crown Social Club
- Vixen's Wedding
- Weather Up
- Whisler's
- Yellow Jacket Social Club



ESTIMATED POPULATION
3 MILES

194,721

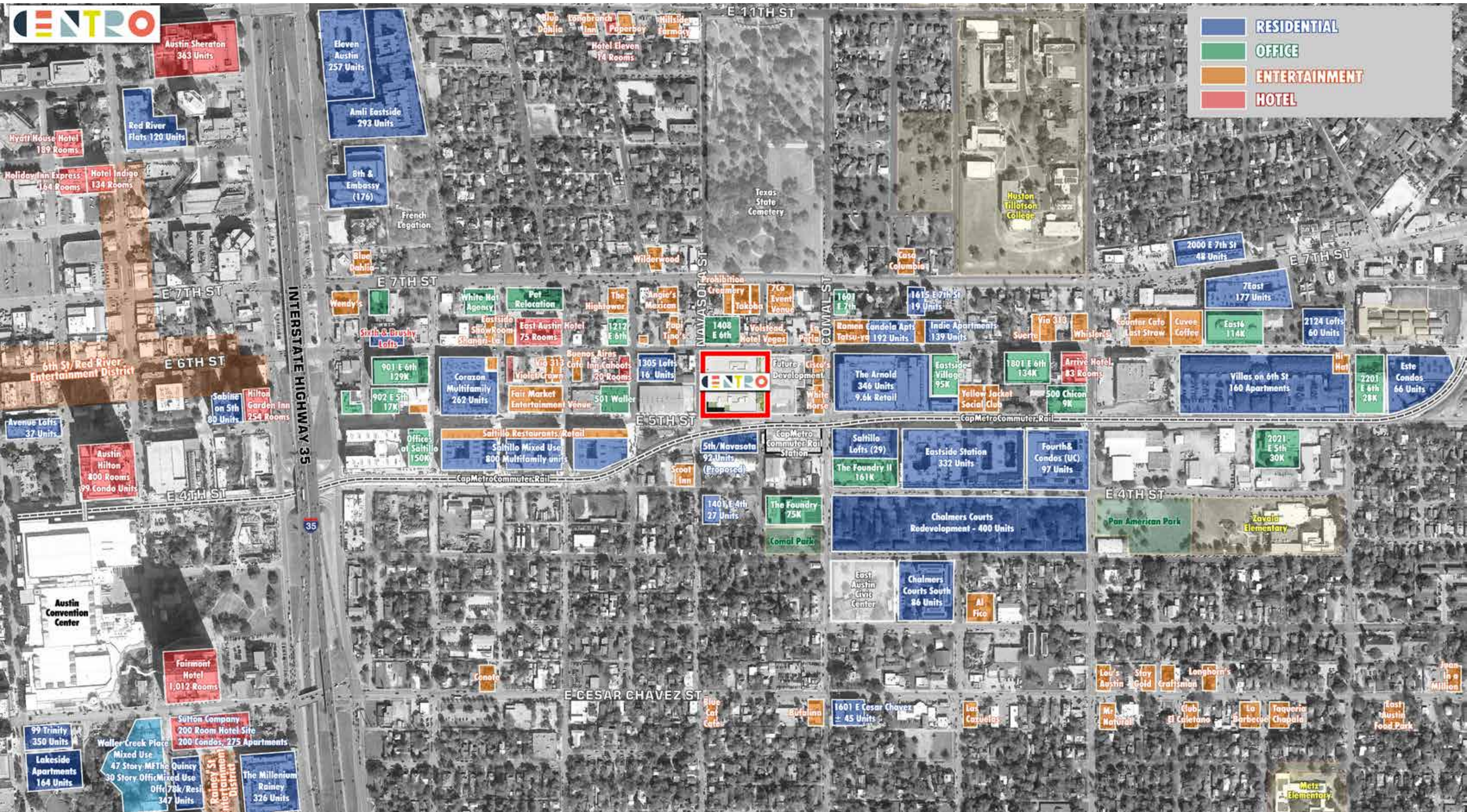
DAYTIME POPULATION
3 MILES

254,500

AVERAGE HOUSEHOLD INCOME
1 MILE

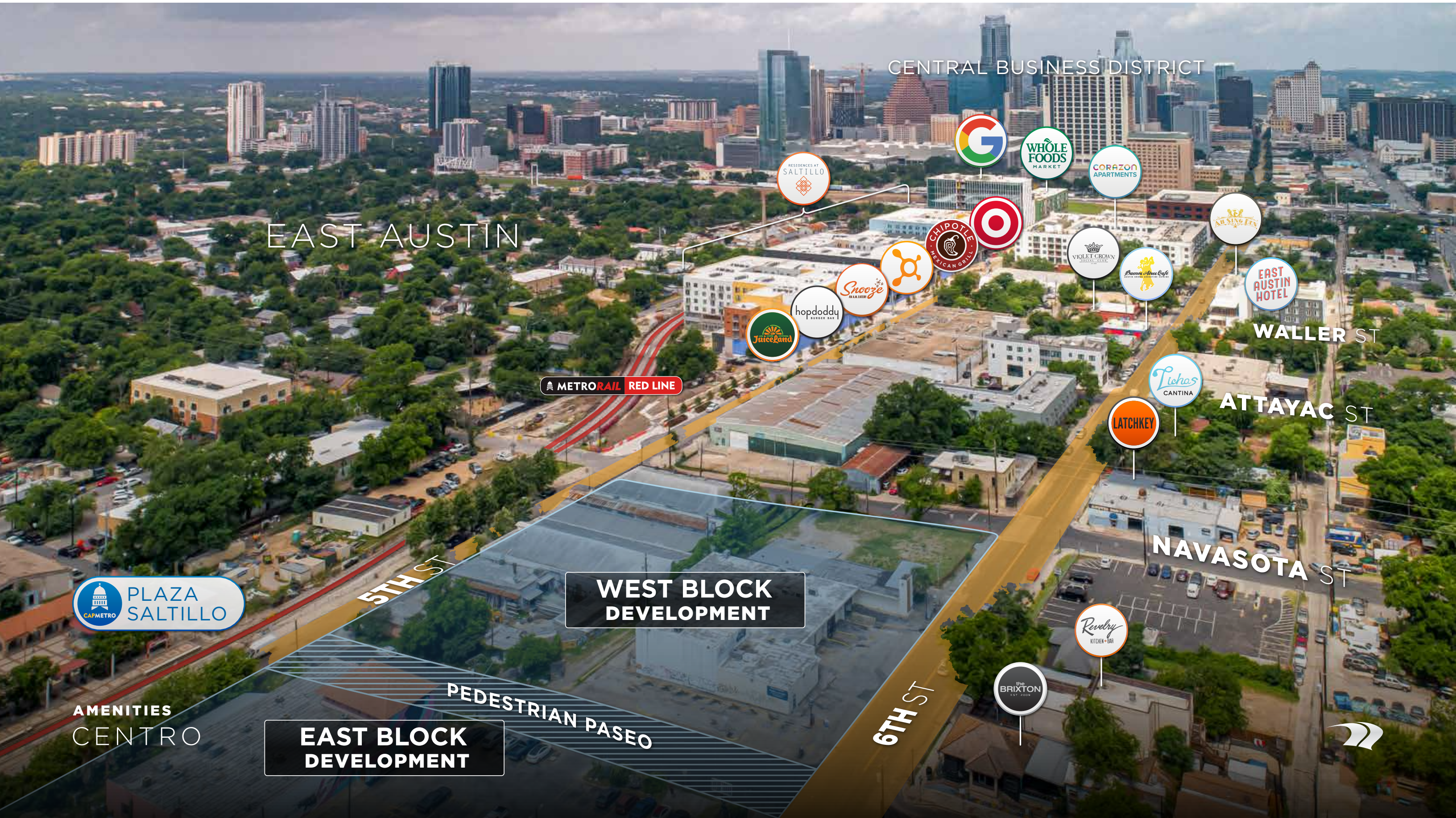
\$101,720

Aerial





Aerial: 6th & Onion facing West



Aerial: 6th & Onion facing East



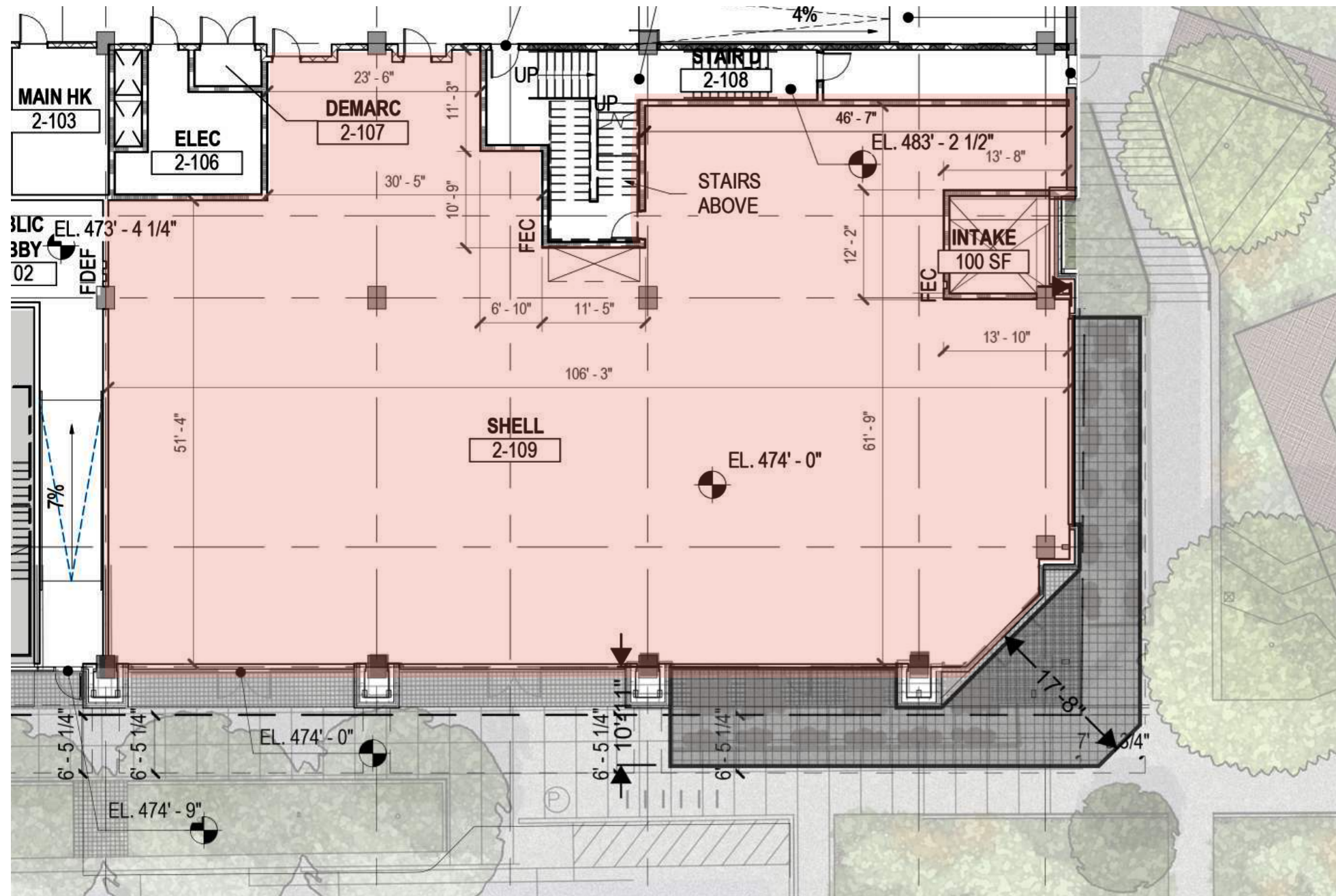
South Building:

Retail and Outdoor Seating

Southeast Corner

Rentable Retail Area: 6,615 SF

Outdoor Seating Area: 855 SF



Adam Zimel
512 682-5548
azimel@endeavor-re.com

Evan Deitch
512 682-5544
edeitch@endeavor-re.com



Developed & Owned By:



RIVERSIDE RESOURCES

Retail Leased By:

