

PACKAGE SALE

83,280 SQ. FT. / 9.28 ACRES
LIVONIA, MICHIGAN



39000, 39050, & 39100 SCHOOLCRAFT ROAD

For more information, contact:

STEVE GORDON

(248) 948 0101 | sgordon@signatureassociates.com



**SIGNATURE
ASSOCIATES**
KNOW SIGNATURE | KNOW RESULTS

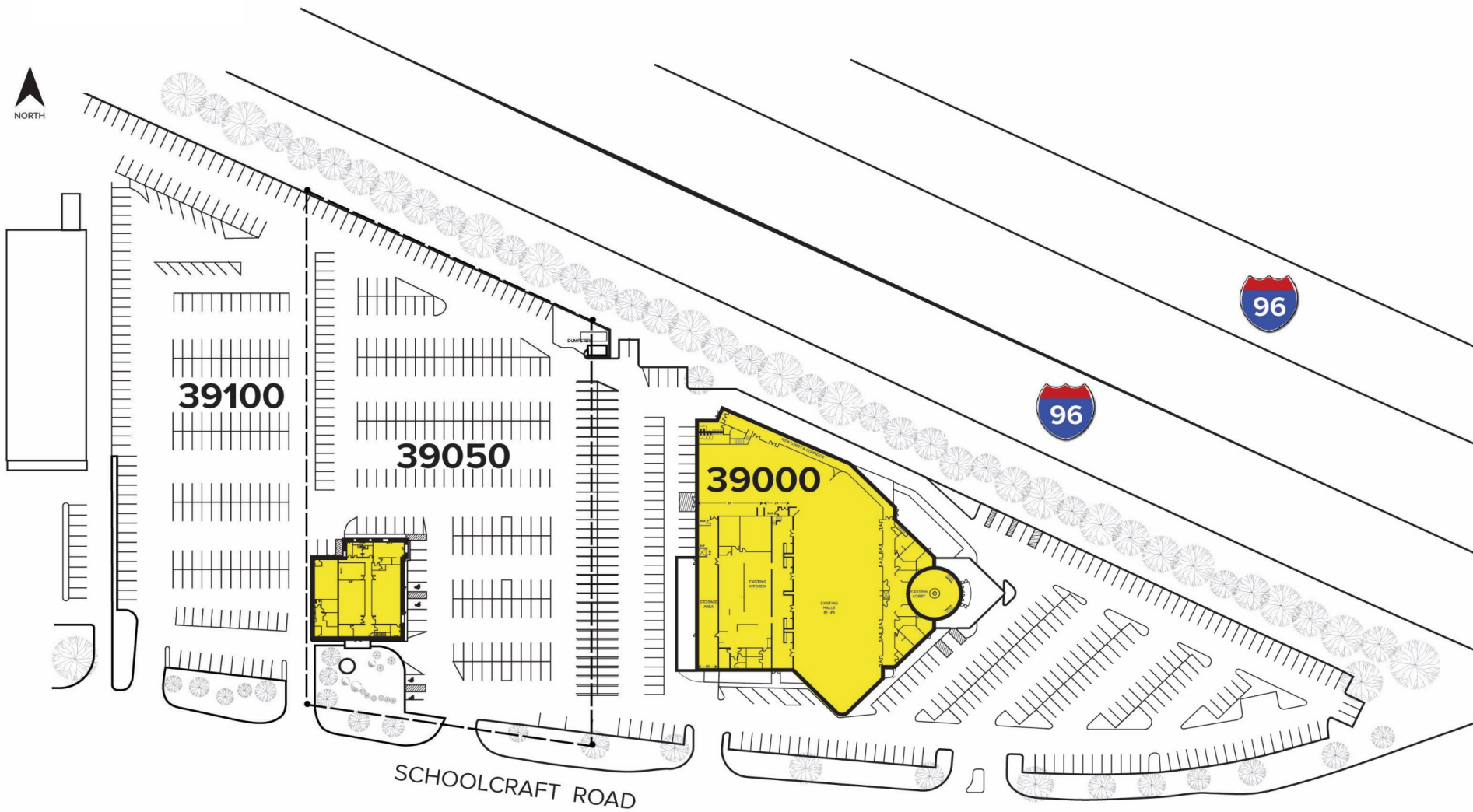
PROPERTY OVERVIEW

**TWO BUILDINGS &
VACANT LAND
TOTALING 83,280 SQ. FT.
AND 9.28 ACRES**

- **39000 Schoolcraft** –
77,000 sq. ft./4.16 acres
- **39050 Schoolcraft** –
6,280 sq. ft./2.84 acres
- **39100 Schoolcraft** –
2.28 acres
- Zoned C-2
- 724 parking spaces
- Convenient access to
all area freeways
- Ideal for a variety of uses
including hotel, banquet
and social club senior
care, medical, church and
more



39000, 39050, 39100 SCHOOLCRAFT - SITE PLAN



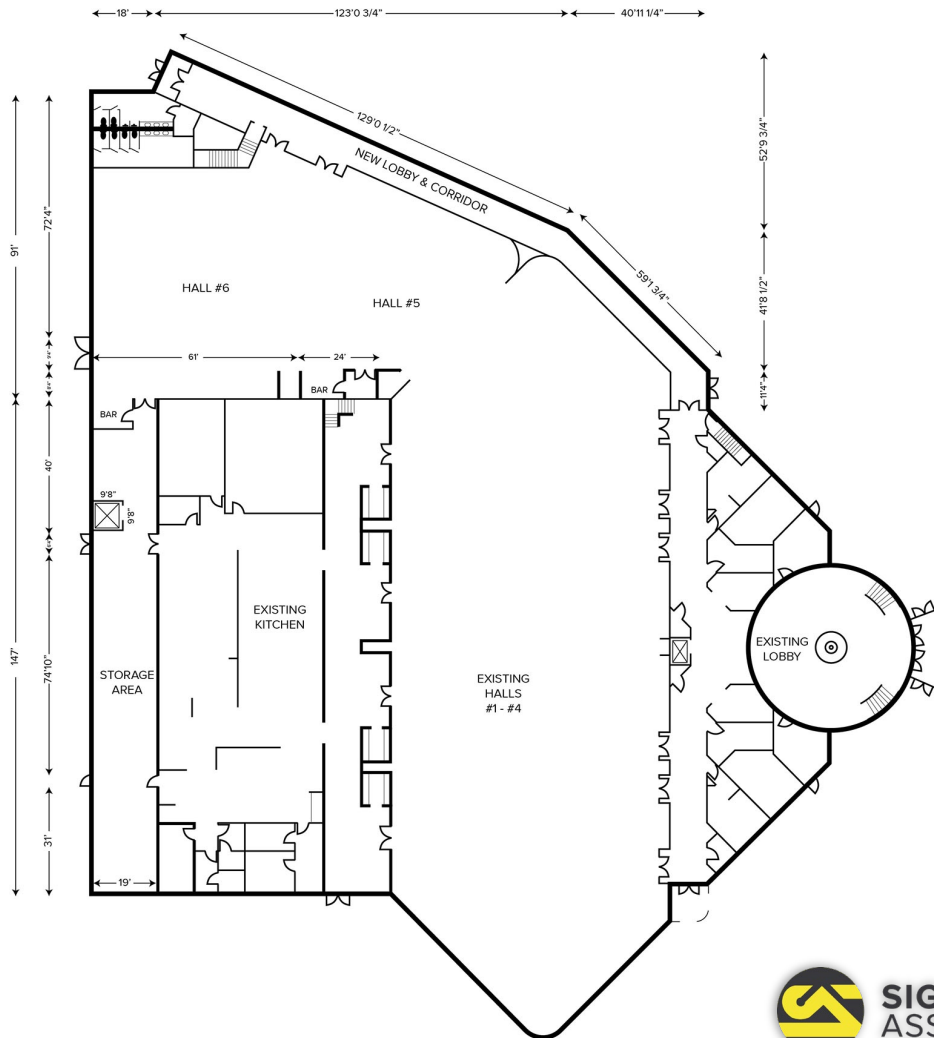


39000 SCHOOLCRAFT // 77,000 SQ. FT.

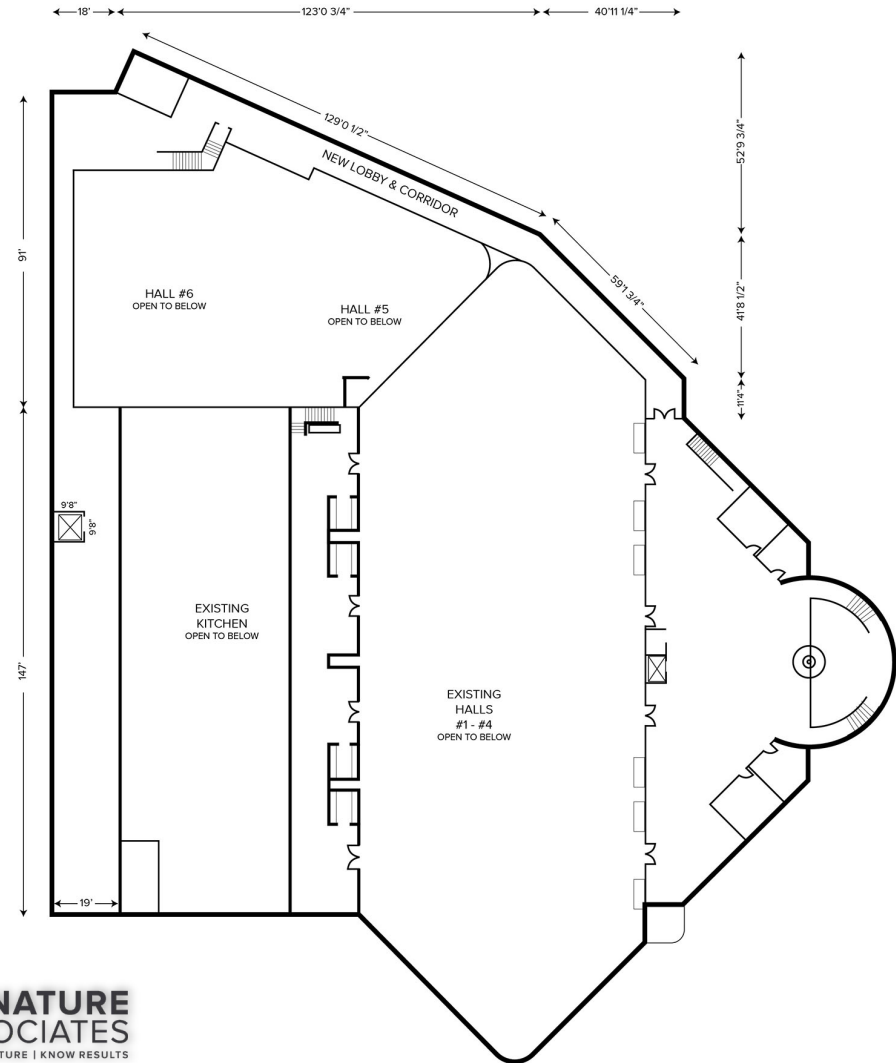


39000 SCHOOLCRAFT // 77,000 SQ. FT.

FIRST FLOOR



SECOND FLOOR

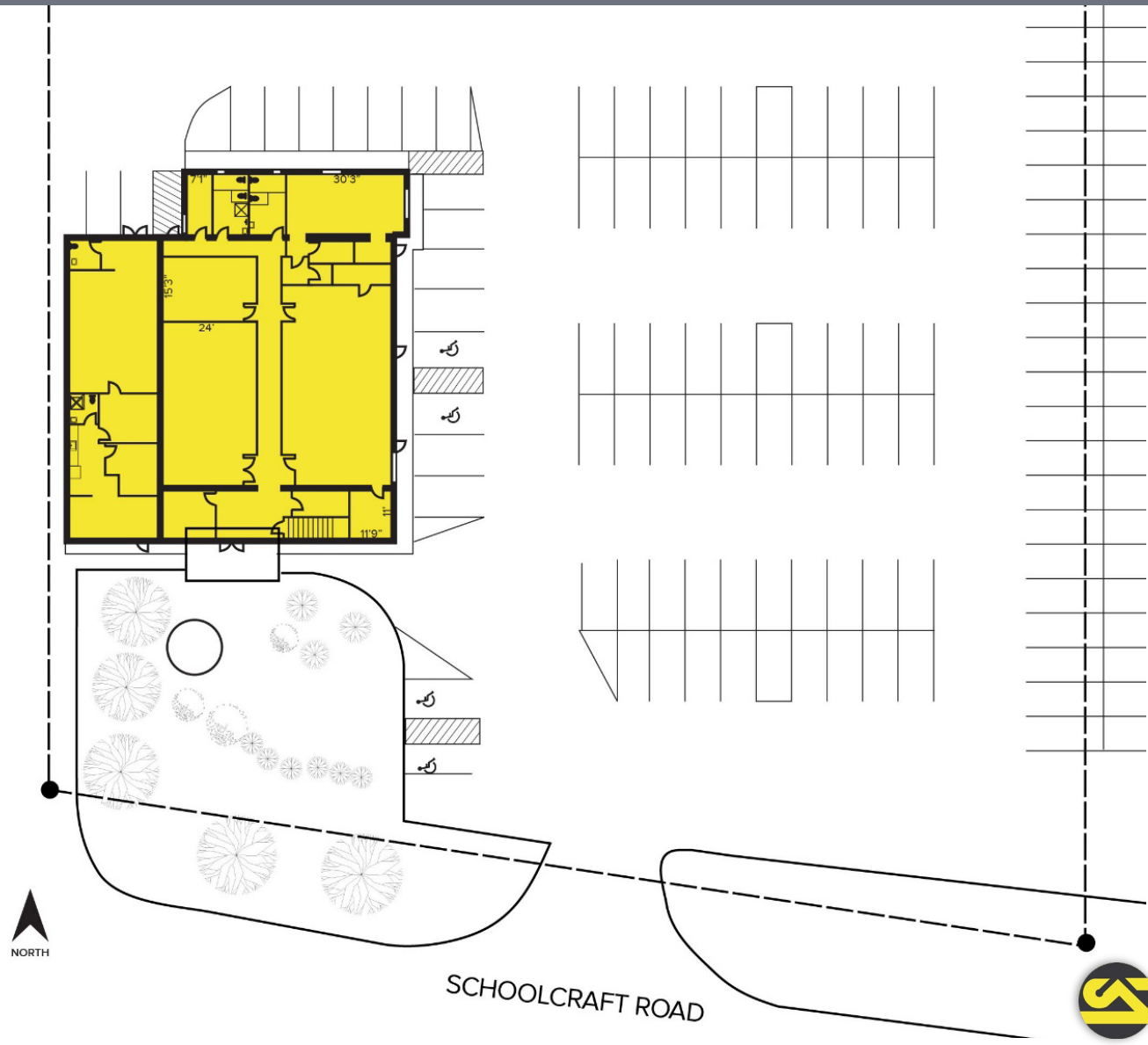




39050 SCHOOLCRAFT // 6,280 SQ. FT.



39050 SCHOOLCRAFT // 6,280 SQ. FT.





39100 SCHOOLCRAFT ROAD // 2.28 ACRES



**SIGNATURE
ASSOCIATES**
KNOW SIGNATURE | KNOW RESULTS

I-96 FREEWAY & SCHOOLCRAFT RD FRONTAGE



**39100
Schoolcraft
2.28
Acres**

**39050
Schoolcraft
6,280 Sq. Ft.
2.84 Acres**

**39000
Schoolcraft
77,000 Sq. Ft.
4.16 Acres**



133,300 ADT

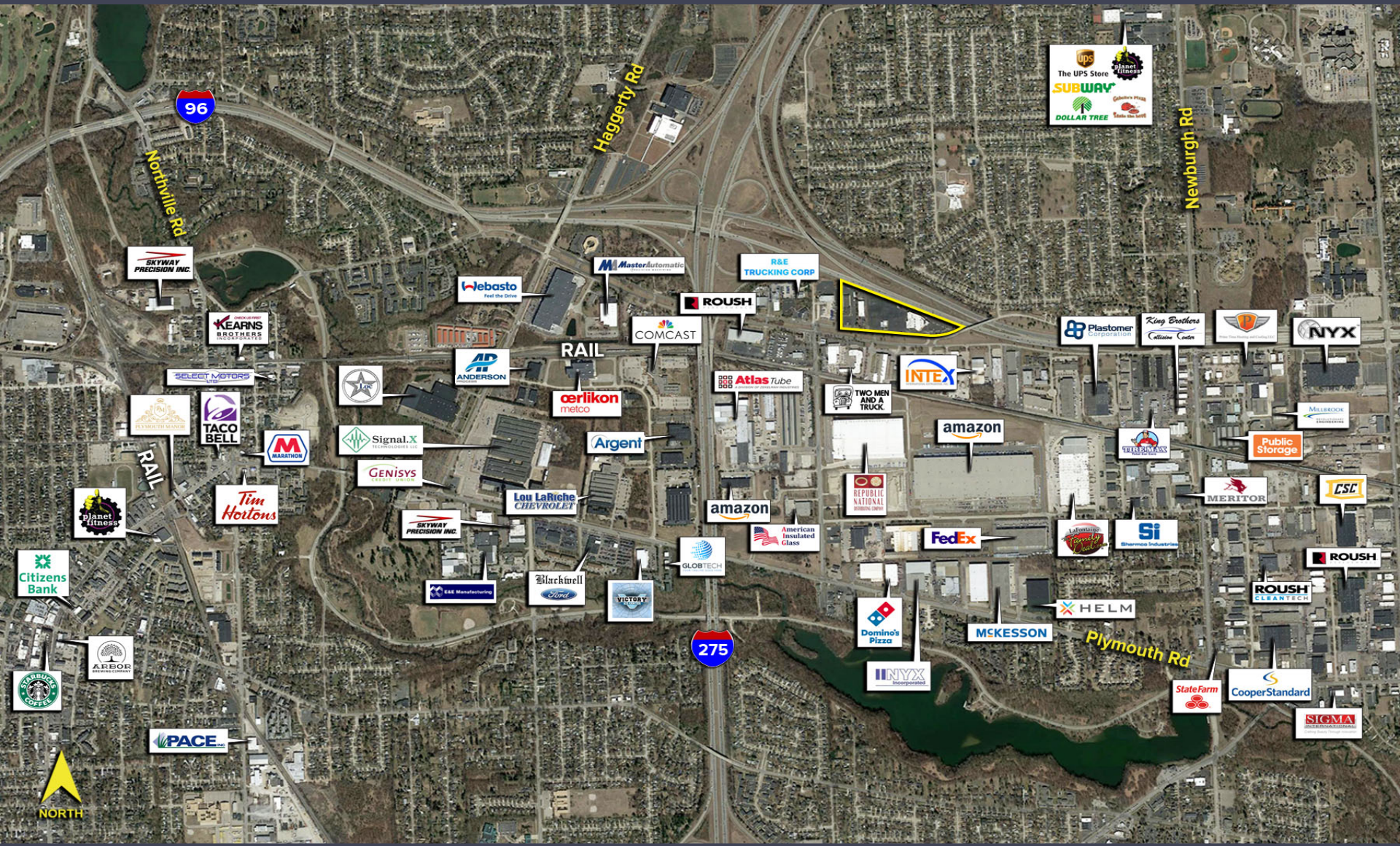
137,582 ADT

12,740 ADT

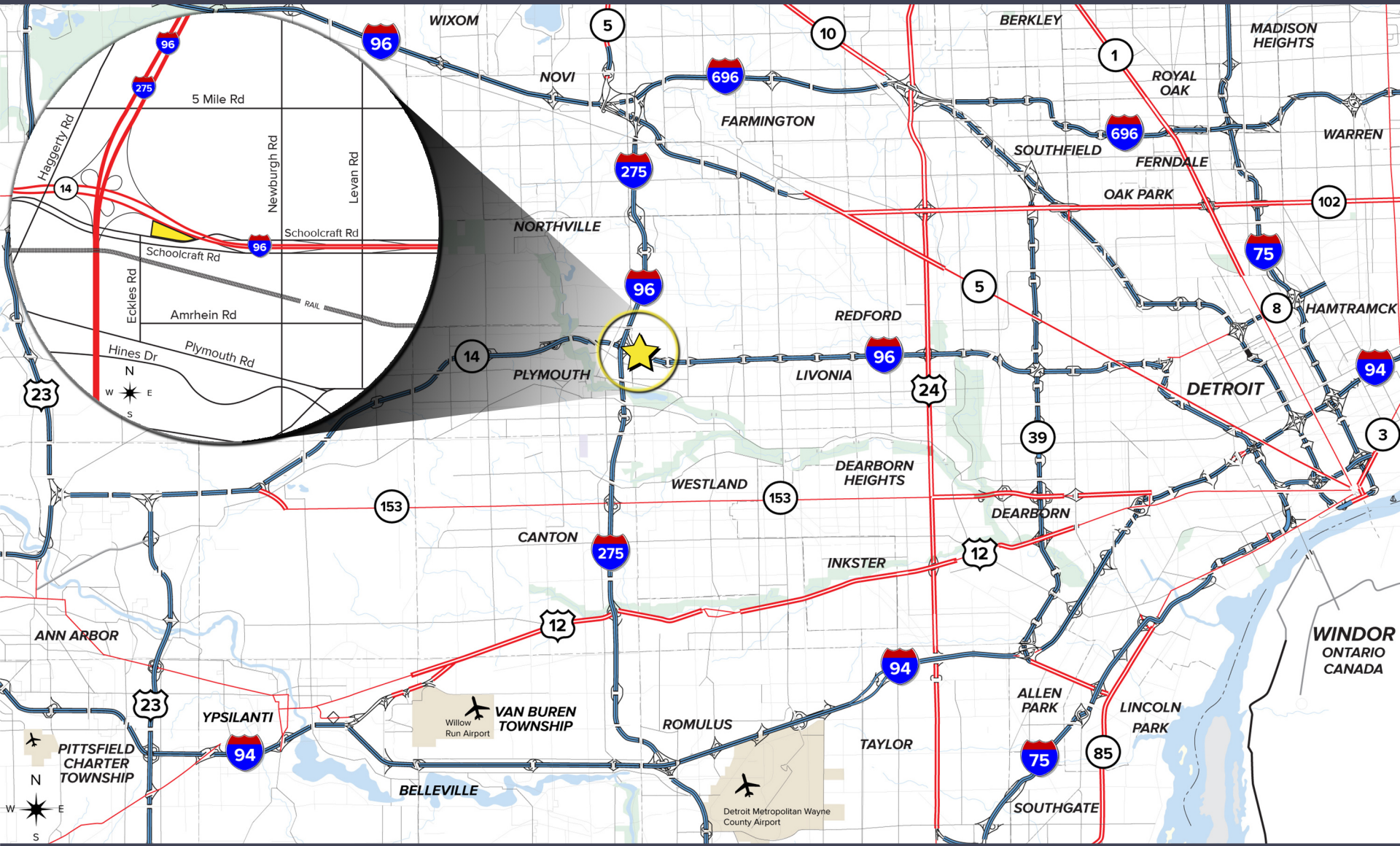
Schoolcraft Rd



BUSINESSES IN SURROUNDING AREA



EASY ACCESS TO ALL FREEWAYS



For more information, contact:

STEVE GORDON

(248) 948 0101

sgordon@signatureassociates.com

SIGNATURE ASSOCIATES

One Towne Square, Suite 1200

Southfield, Michigan 48076

(248) 948 9000

www.signatureassociates.com



**SIGNATURE
ASSOCIATES**

KNOW SIGNATURE | KNOW RESULTS