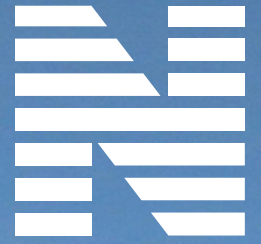




INTERNATIONAL

A CLASS A BULK DISTRIBUTION CENTER

5656 WEST JOHN CANNON DRIVE, SALT LAKE CITY UTAH, 84116



**INTRODUCING A QUALITY
DEVELOPMENT BY:**



THE
RITCHIE
GROUP

EXCLUSIVELY MARKETED BY:

Jeff Heaton, SIOR

801.578.5539

jheaton@ngacres.com

Lucas M. Burbank

801.578.5522

lburbank@ngacres.com

Kyle Roberts, SIOR, CCIM

801.578.5525

kroberts@ngacres.com

Newmark Grubb

ACRES

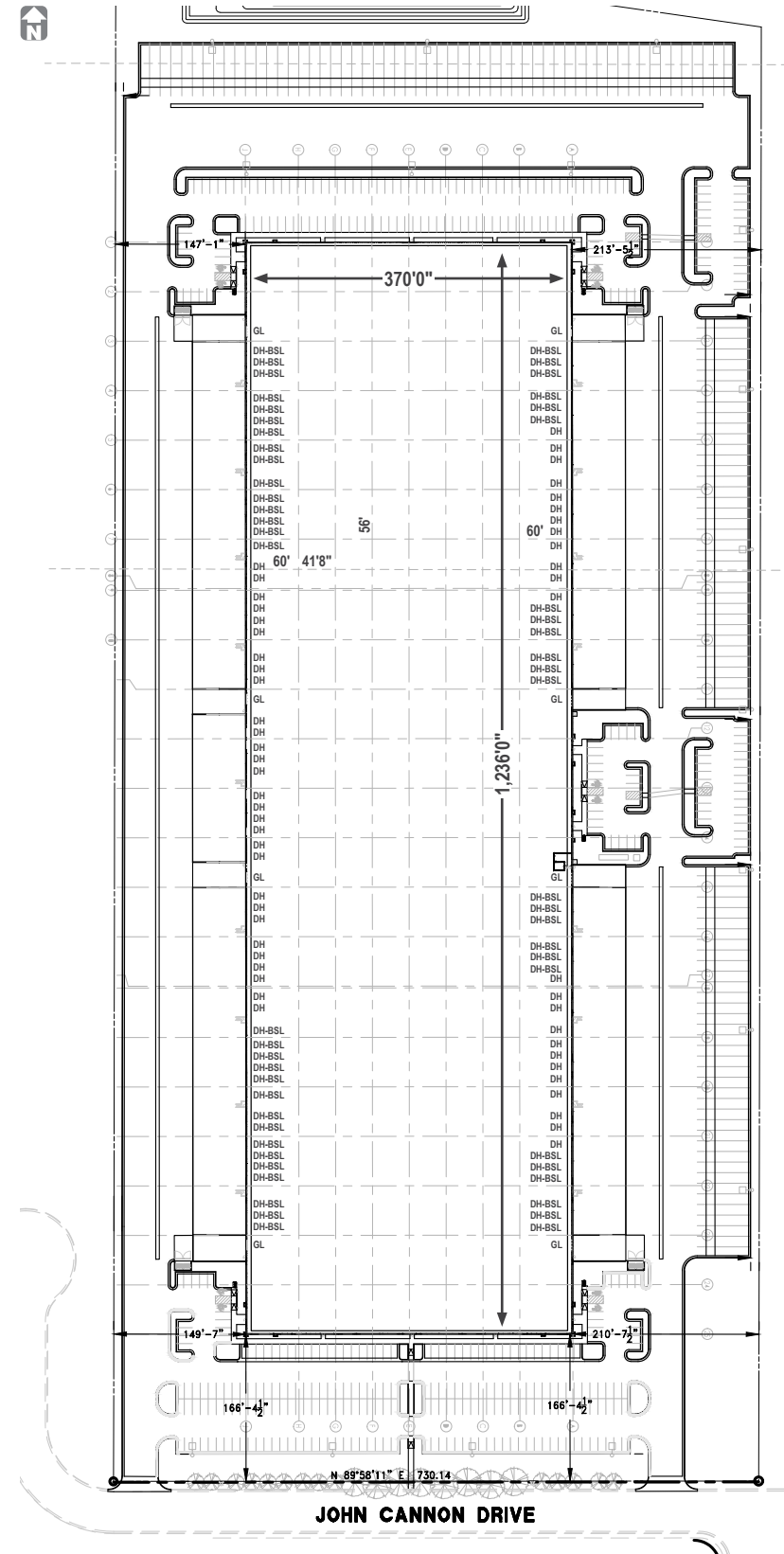


5656 WEST JOHN CANNON DRIVE, SALT LAKE CITY UTAH, 84116

AVAILABLE FOR LEASE

PROPERTY FEATURES

- Building: 457,320 SF
- Office BTS
- Divisible to 51,290 SF
- Zoning: M-1
- Acreage: 30.57 Acres
- Loading:
 - One Hundred Seven (107) Dock High Doors (9' x 10')
 - Eight (8) Ground Level Doors (14' x 16')
- Clear Height: 36'
- Power: 3000 Amp, 277 / 480 V, 3 phase
- On Site Trailer Parking: 130 Stalls
- Auto Parking: 437 Stalls
- Building Depth: 370
- Building Length: 1236'
- Column Spacing: 41'8" x 56'
- Floor Slab: 7" Rebar Reinforced Floor
- Roof Construction: 45 Mil TPO with R30 Rigid Insulation
- Concrete Tilt up
- ESFR Fire Suppression
- Cross Dock Loading Configuration
- Natural Light
 - Skylights 52
 - Clerestory Windows 130
 - Large Glass front entryways
- Located in the Salt Lake International Center - 1.3 Miles from I-80, 4 Miles from Airport, 5 Miles from I-215 & 7 Miles from I-15



BUILDING SF:
457,320 SF

DIVISIBLE TO:
51,290 SF

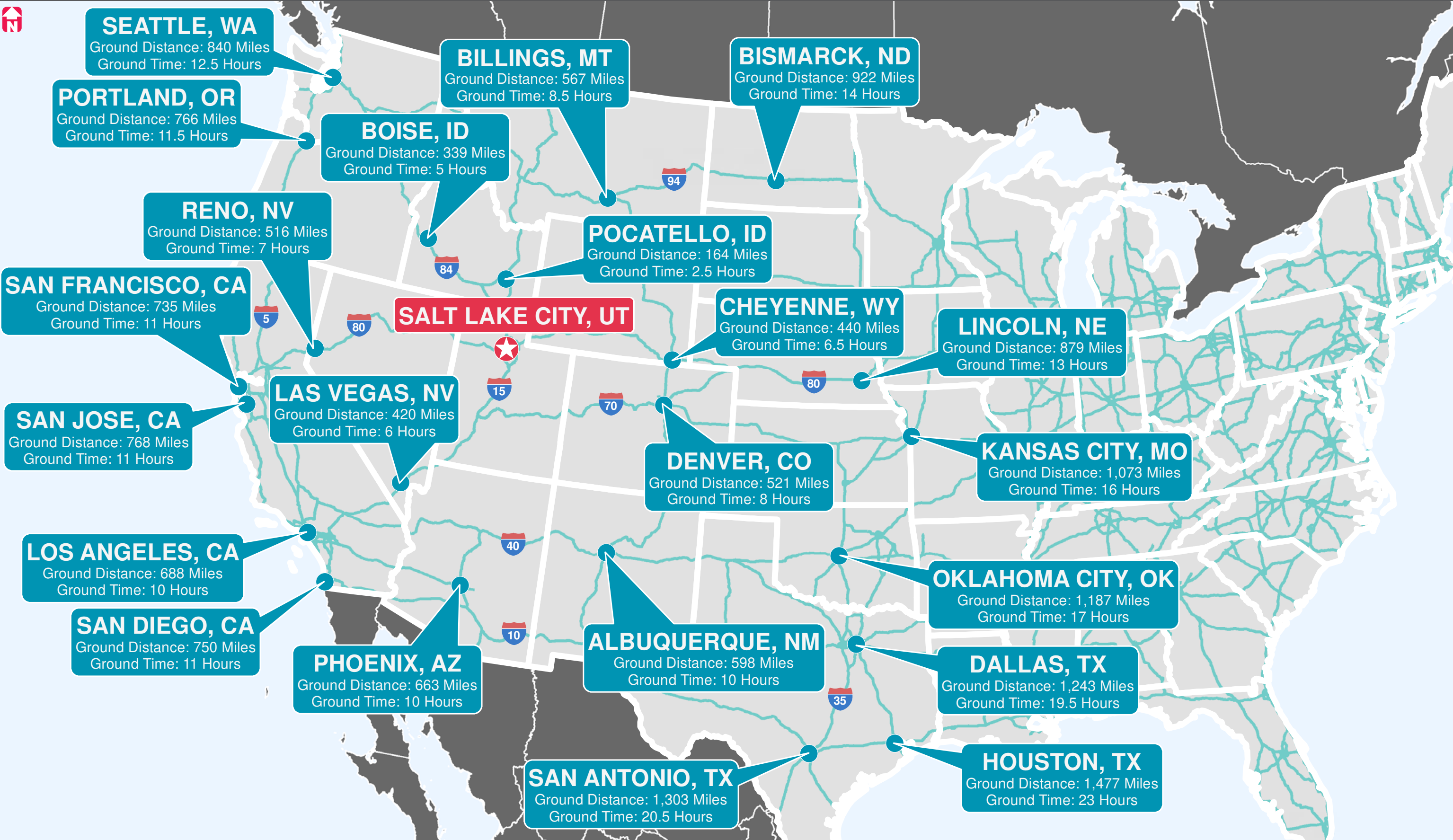
DELIVERY:
Q2 2019

A QUALITY DEVELOPMENT BY:



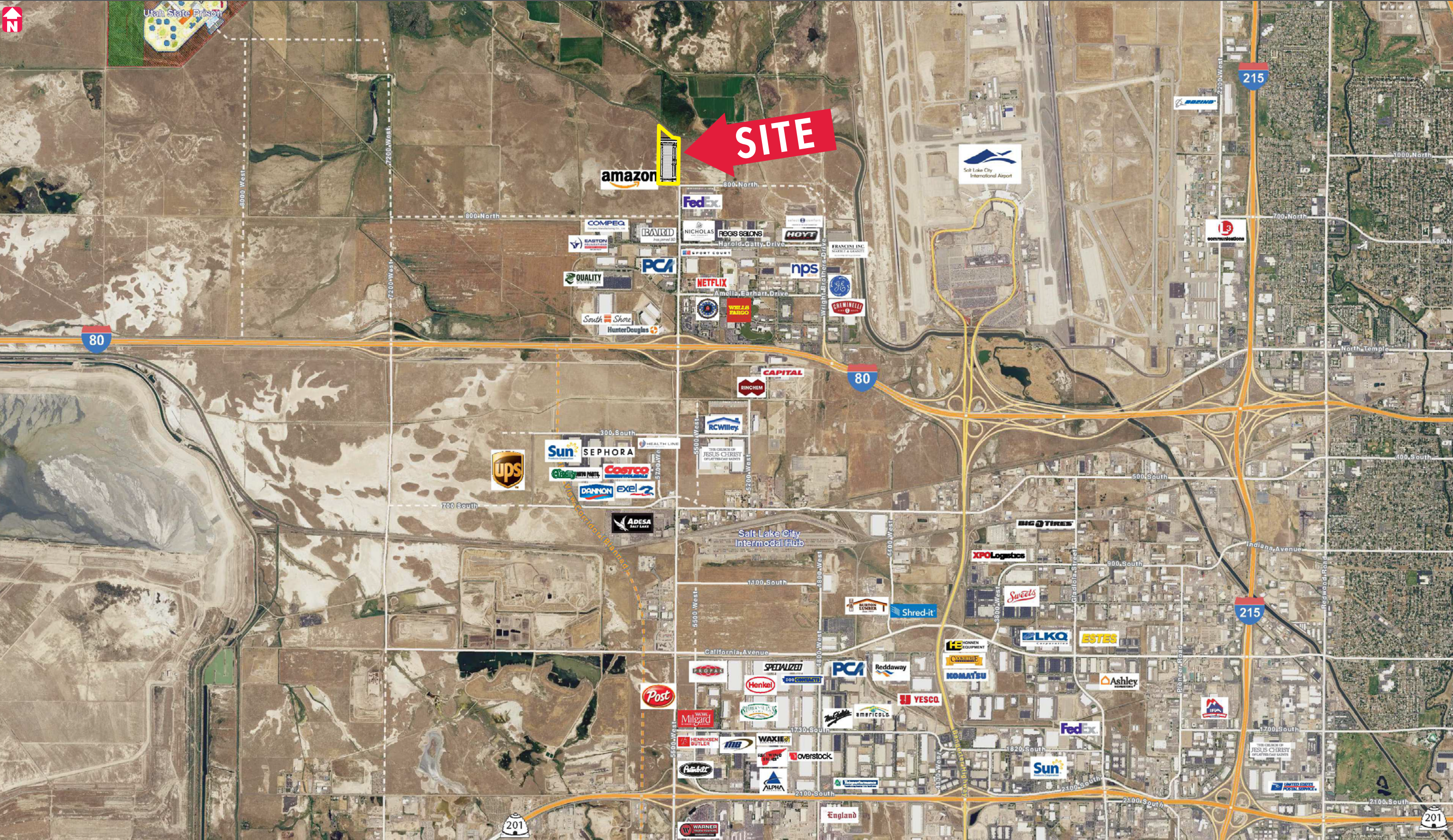
A CLASS A DISTRIBUTION CENTER

5656 WEST JOHN CANNON DRIVE, SALT LAKE CITY UTAH, 84116



A CLASS A DISTRIBUTION CENTER

5656 WEST JOHN CANNON DRIVE, SALT LAKE CITY UTAH, 84116



A CLASS A DISTRIBUTION CENTER