

**AVISON  
YOUNG**



Office/Warehouse Space Available for Lease: ± 6,041 sf

  
**PRESSLEY**  
BUSINESS CENTER

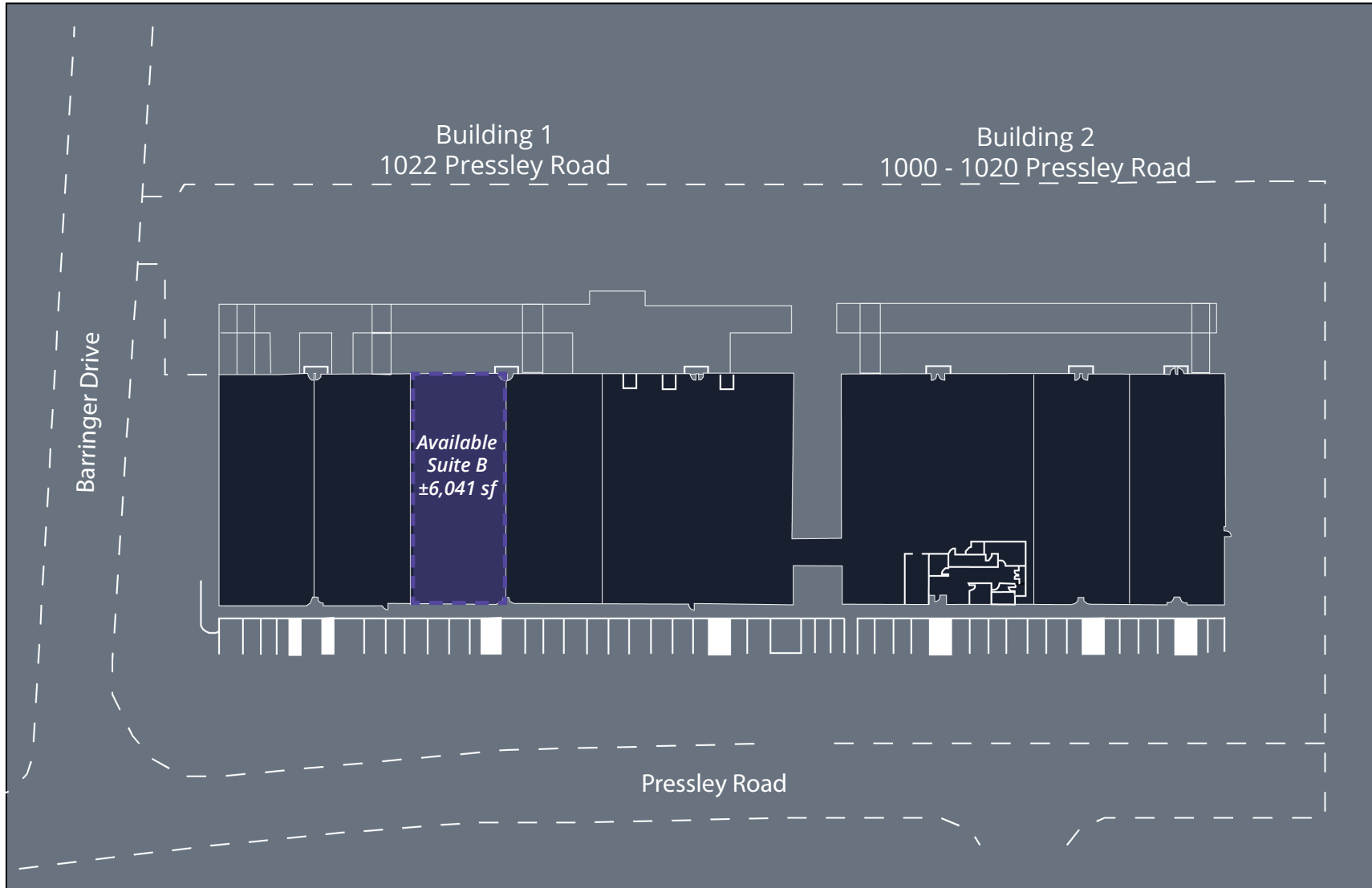
**1022** Pressley Road  
CHARLOTTE, NORTH CAROLINA

*For more information please contact:*

**Chris Loyd**  
Vice President  
704.612.0238  
[chris.loyd@avisonyoung.com](mailto:chris.loyd@avisonyoung.com)

**Tom Tropeano**  
Vice President  
704.413.0228  
[tom.tropeano@avisonyoung.com](mailto:tom.tropeano@avisonyoung.com)

# Site Plan



For more information please contact:

**Chris Loyd**

Vice President

704.612.0238

chris.loyd@avisonyoung.com

**Tom Tropeano**

Vice President

704.413.0228

tom.tropeano@avisonyoung.com



**AVISON  
YOUNG**

# Space Specifications

**Address:** 1022 Pressley Road - Suite B  
Charlotte, NC 28217

**Total sf Available:** ±6,041

**Office sf:** ±877

**Clear Height:** 18'

**DH Doors:** Two (2) - 9' x 10'

**Truck Court:** Fully Fenced

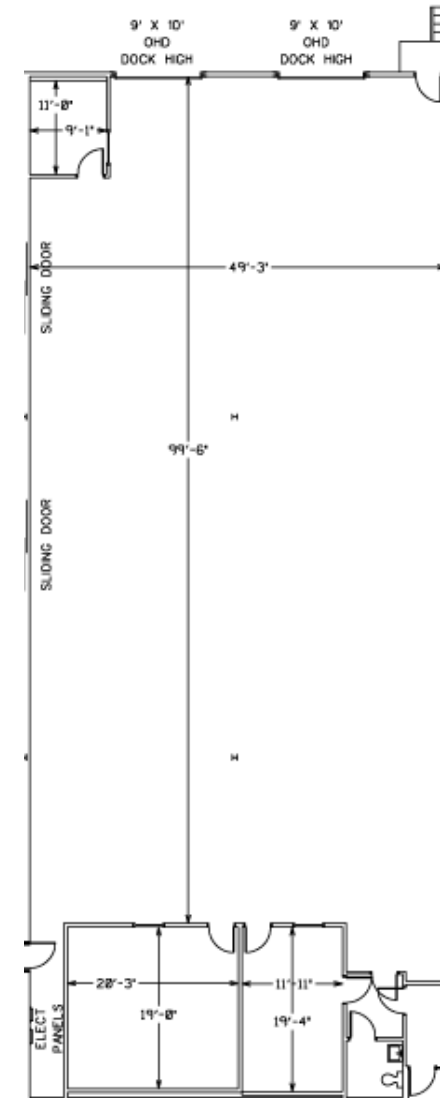
**Zoning:** I2 - Allows Outdoor Storage

**Available:** 1/1/2021

*For more information, please contact:*

**Chris Loyd**  
Vice President  
704.612.0238  
chris.loyd@avisonyoung.com

**Tom Tropeano**  
Vice President  
704.413.0228  
tom.tropeano@avisonyoung.com

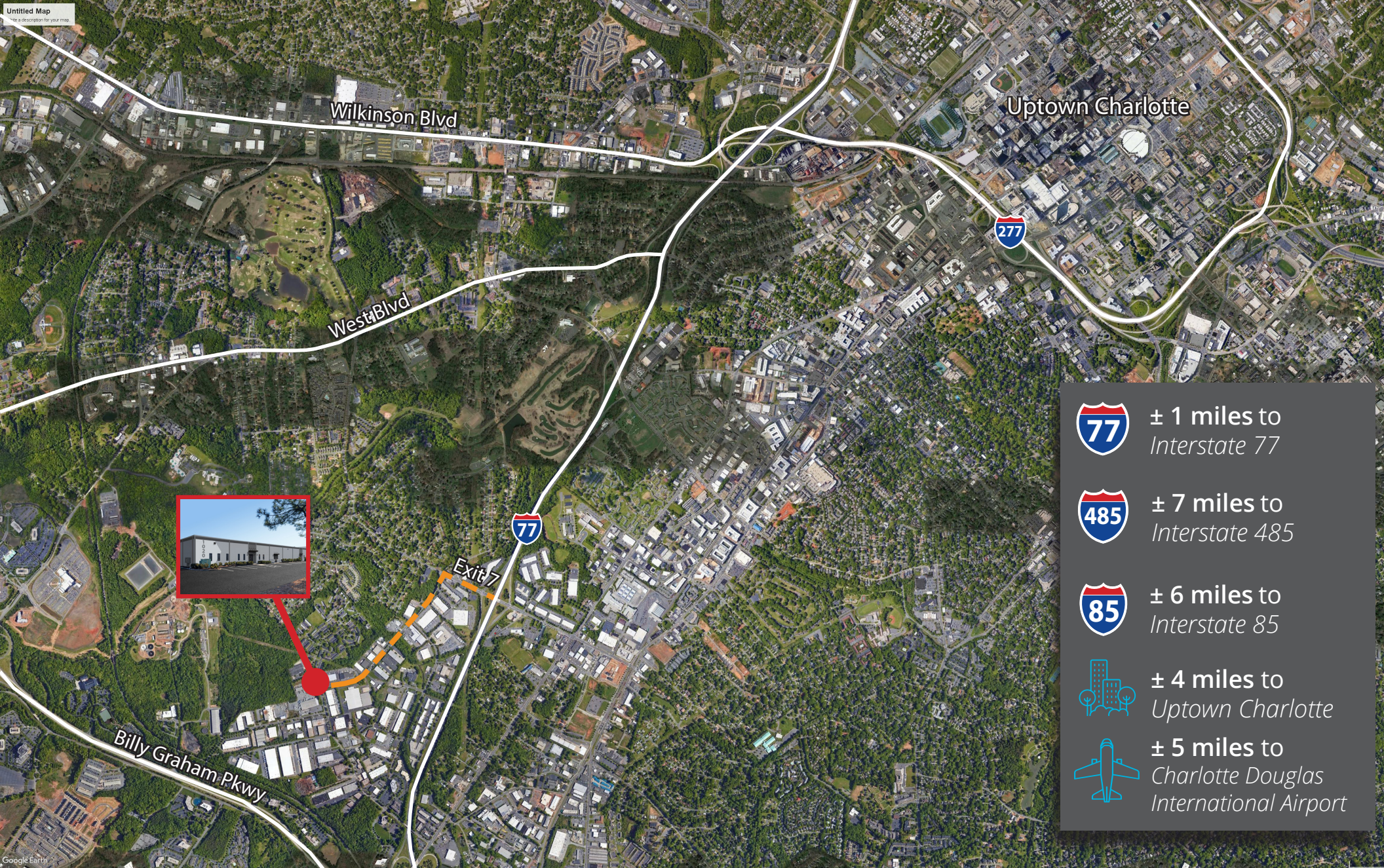




1022 B  
6,041 SF  
877 SF OFFICE

  
**PRESSLEY**  
BUSINESS CENTER

**AVISON  
YOUNG**





-  ± 1 miles to Interstate 77
-  ± 7 miles to Interstate 485
-  ± 6 miles to Interstate 85
-  ± 4 miles to Uptown Charlotte
-  ± 5 miles to Charlotte Douglas International Airport

For more information please contact:

**Chris Loyd**  
 Vice President  
 704.612.0238  
[chris.loyd@avisonyoung.com](mailto:chris.loyd@avisonyoung.com)

**Tom Tropeano**  
 Vice President  
 704.413.0228  
[tom.tropeano@avisonyoung.com](mailto:tom.tropeano@avisonyoung.com)

