

9275 & 9325 SKY PARK COURT  
SKY PARK OFFICE PLAZA



EQ Office

**CBRE**

# FEATURES

- › Common area renovations complete
- › Prominent corner location with building and monument signage available
- › Complimentary covered parking (32%)
- › Full service membership gym operated by Fitness Zone, with personal training available - [www.fitnesszonept.com](http://www.fitnesszonept.com)
- › “Cafe 160” on-site organic cafe. Serving local organic food, coffee, smoothies, and kombucha - [www.cafe160.com](http://www.cafe160.com)
- › Showers / Lockers
- › Fiber optics available (C Beyond, AT&T, Time Warner, Cogent etc)
- › Energy Star designation
- › Common area Wi-Fi
- › Public transportation on site
- › Electric vehicle charging stations, bike lockers and bike racks
- › Excellent access to I-15, I-8, I-805, Hwy 163 and Hwy 52 via Aero Drive and Balboa Avenue

# DETAILS

## 9275 SKY PARK CT

---

Leased

## 9325 SKY PARK CT

---

Suite	RSF	Availability
210	1,593 RSF	Now

---

# AMENITIES MAP



CORONADO

DOWNTOWN

MISSION VALLEY

Hotel Circle

Qualcomm Stadium

Stadium Golf

Fry's Electronics

PetSmart Vons  
Wal-Mart  
Wells Fargo

7-Eleven  
MTS

Montgomery Field

Einstein Bros.  
Panda Express  
Payless Shoe Source  
Quiznos Starbucks

Express Tire  
McDonald's  
Taco Bell

9325  
SKY PARK CT

9275  
SKY PARK CT

Holiday Inn  
Roberto's Taco Shop  
Sizzler, Submarina

Jack In The Box  
Papa John's Pizza  
Pick Up Stix  
Togo's Eatery

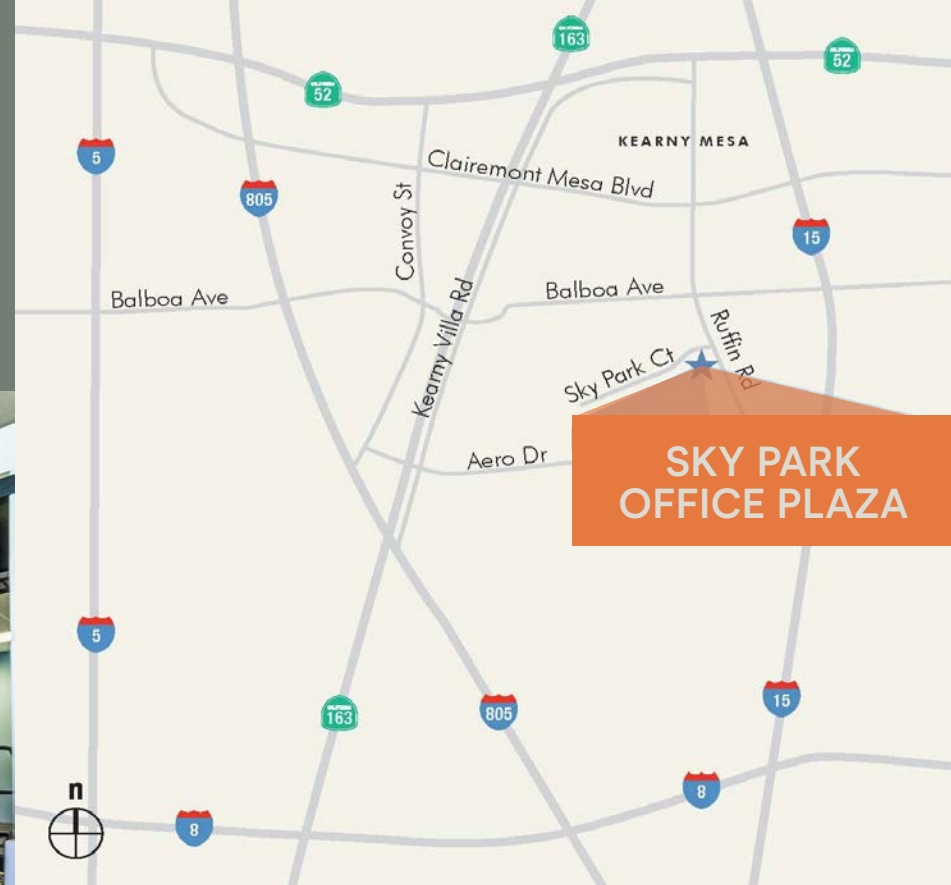
MTS  
MTS  
MTS

MTS

- SAN DIEGO SPECTUM
- ARCO
  - Boll Weevil
  - Butcher Shop
  - California Coast Credit Union
  - Carl's Jr.
  - Cort Furniture Rental
  - County Assessor's Office
  - Denny's
  - Dlux Cleaners
  - Filippi's
  - H & R Block
  - Jack in the Box
  - La Salsa
  - Marriott
  - McDonald's
  - Nextel
  - North Island Credit Union
  - Panda Express
  - Red Brick Pizza
  - Robeks
  - Ruby's Cafe
  - San Diego Municipal Courthouse
  - Starbucks
  - Subway
  - Taco Bell
  - The Spice Cafe
  - US Bank
  - Wells Fargo
  - Wendy's



# MAP & PHOTOS





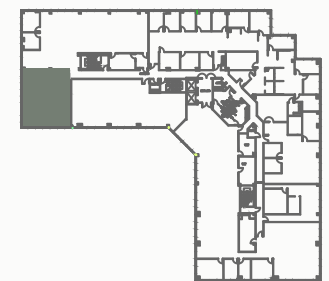
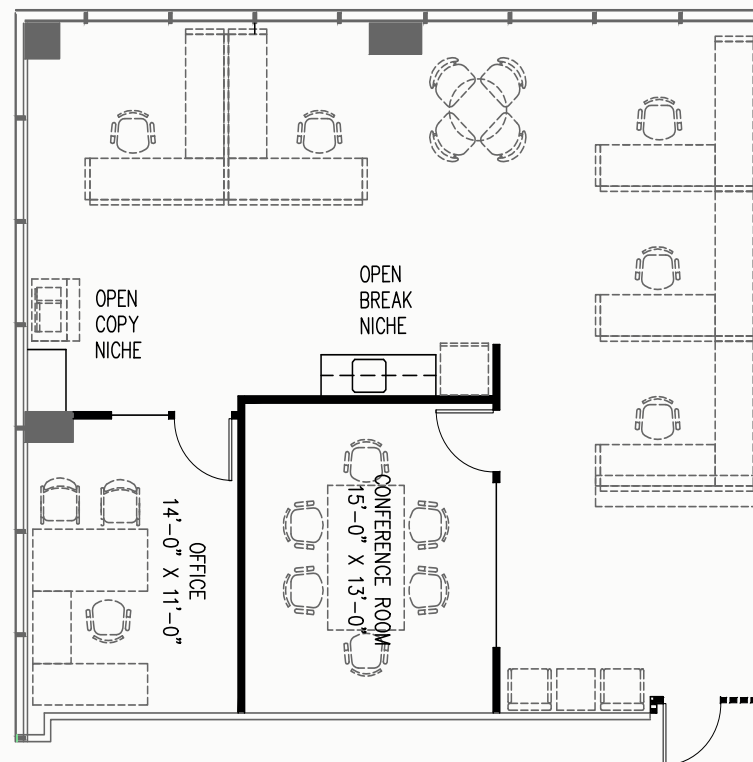
# FLOOR PLANS

9325 SKY PARK CT

## SPEC SUITE

Suite	210
Size	1,593 SF
Available	Now
Asking Rate	\$3.00 FSG

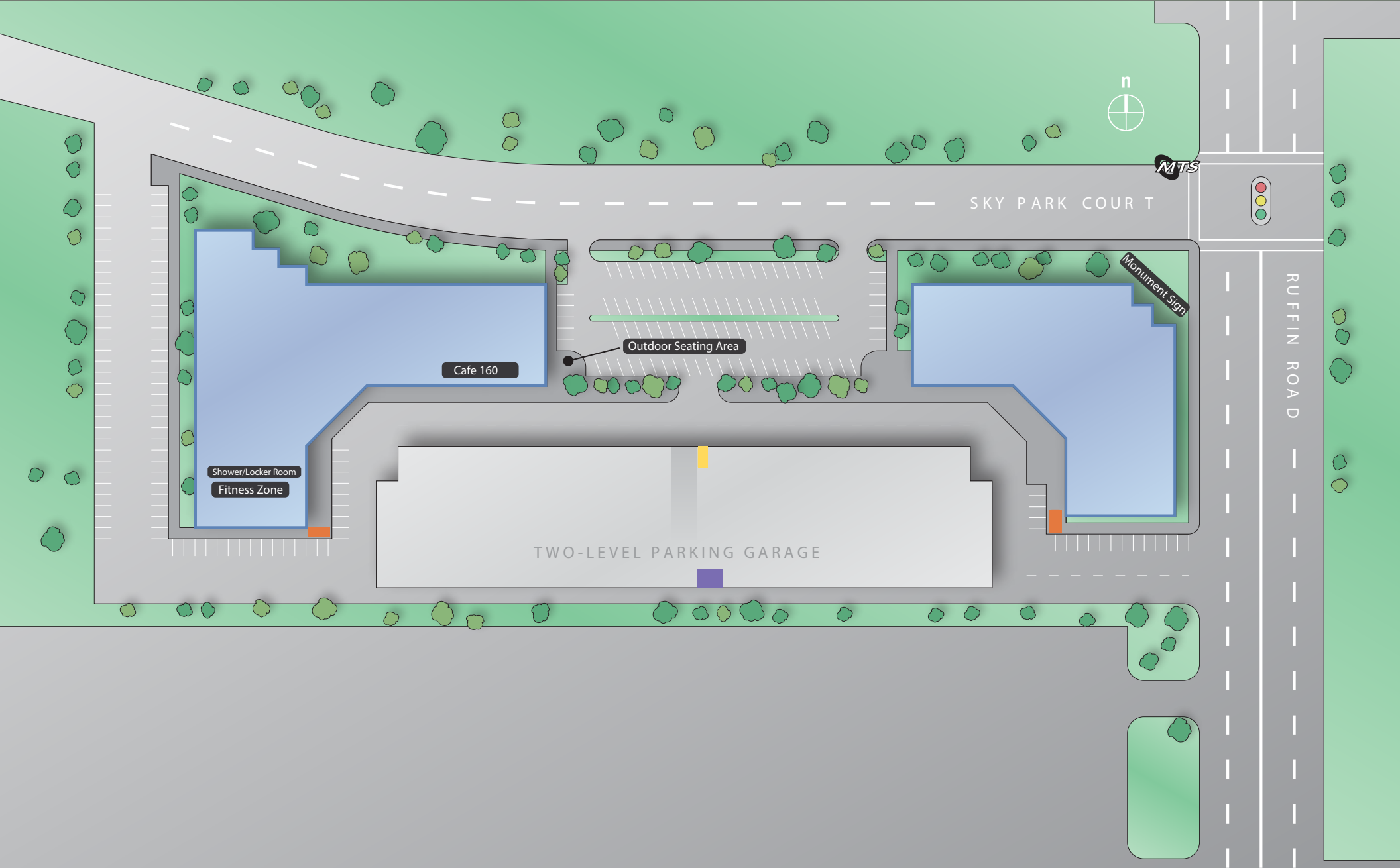
Suite features conference room, private office, wet bar and open area



Not Available



# PARKING



- bike locker
- bike rack
- electronic vehicle charging station

# 9275 & 9325 SKY PARK COURT

## SKY PARK OFFICE PLAZA

### FOR INFORMATION CONTACT

NICK BONNER  
Lic. 01482997  
+1 858 646 4777  
nick.bonner@cbre.com

ROB MERKIN  
Lic. 00881080  
+1 858 546 4629  
rob.merkin@cbre.com

CHRIS PASCALE  
Lic. 00890849  
+1 858 546 4601  
chris.pascale@cbre.com



**EQ Office**

**CBRE**

CBRE, INC  
Broker Lic. 00409987

© 2019 CBRE, Inc. All rights reserved. This information has been obtained from sources believed reliable, but has not been verified for accuracy or completeness. Any projections, opinions, or estimates are subject to uncertainty. The information may not represent the current or future performance of the property. You and your advisors should conduct a careful, independent investigation of the property and verify all information. Any reliance on this information is solely at your own risk. CBRE and the CBRE logo are service marks of CBRE, Inc. and/or its affiliated or related companies in the United States and other countries. All other marks displayed on this document are the property of their respective owners. Photos herein are the property of their respective owners and use of these images without the express written consent of the owner is prohibited.