



FOR LEASE

SPACE AVAILABLE

1115 - 1299 S. FEDERAL HIGHWAY | POMPANO BEACH, FL



JON CASHION

Principal

JonCashion@dkatz.com

(561) 869-4342

ERIC SPRITZ

Sales Associate

EricSpritz@dkatz.com

(561) 869-4349

DANIEL SOLOMON, CCIM

Principal








DanielSolomon@dkatz.com

(561) 869-4351

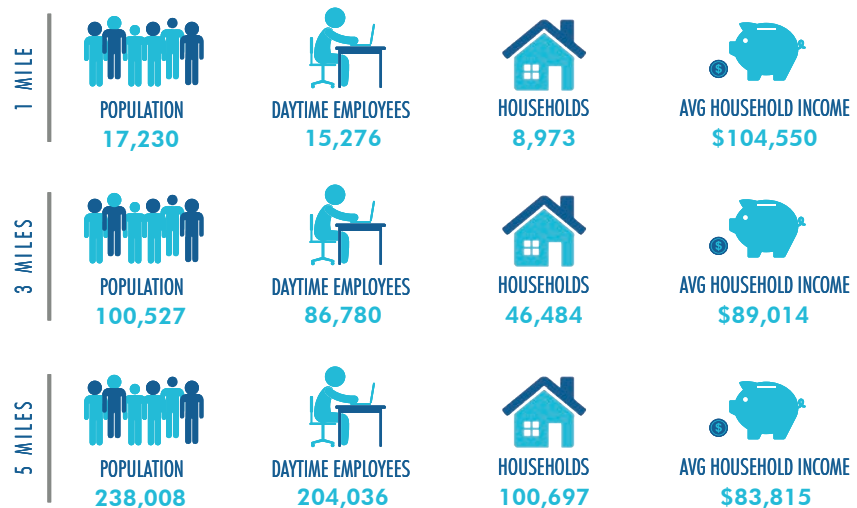


MONUMENT SIGNAGE

SITE HIGHLIGHTS

- Join    
   and more
- Average daily traffic of 47,000 cars on Federal Highway
- Daytime population of 86,780 within 3 miles
- Total population of 100,527 within 3 miles with average household income of \$89,014

DEMOGRAPHICS





PHOTOS | RETAILERS IN THE CENTER

1115 - 1299 S. FEDERAL HIGHWAY
POMPAN0 BEACH, FL



1	Jimmy John's	1,453
2	AT&T	1,901
3	Carrabba's	
4	AVAILABLE	1,394
5	Leslie's Pool Supplies	2,550
6	DentVest	1,700
7	AVAILABLE	5,500
8	Ross Dress For Less	27,001
9	Beall's Outlet	27,011
10	National Bank	3,921
11	My Pilates Girl	1,050
12	AVAILABLE	1,050
13	Al Stephens Studio	1,400
14	Elegant Nails	1,400
15	China Wok	1,200
16	Dollar Tree	11,212
17	Walmart Neighborhood Market	59,233
18	Anytime Fitness	5,458
19	Massage Envy	3,500
20	Miyako Japanese Buffet	5,749
21	Deccan Spice Indian Cuisine	2,975
23	Supercuts	1,275
24	Jo-Ann Fabrics	20,200
25	AVAILABLE	2,303
26	Stein Mart	36,000
27	TD Bank	3,660
28	Anthony's Coal Fired Pizza	3,000

