



TERRACES

PURSUE NEW PERSPECTIVES





Pursuing a new perspective begins with prime positioning. It's not where you stand today, but where you advance tomorrow. Put yourself in a new environment designed for balance with room for growth in a central location — at Terraces, we can think of no better pursuit for your business. Rising 11 stories above Atlanta's thriving Central Perimeter submarket, Terraces is a two building, Class A workplace destination.

PURSUE
NEW
PERSPECTIVES



A BUILDING FOR YOUR BRAND

An office at Terraces boasts a choice location and distinct, modernist architecture. Businesses have access to quality talent and are surrounded by fellow A-list tenants, and with close proximity to MARTA, GA 400, and I-285, employees at Terraces enjoy convenient access and shorter commute times.



Panoramic Views from Private Balcony Terrace



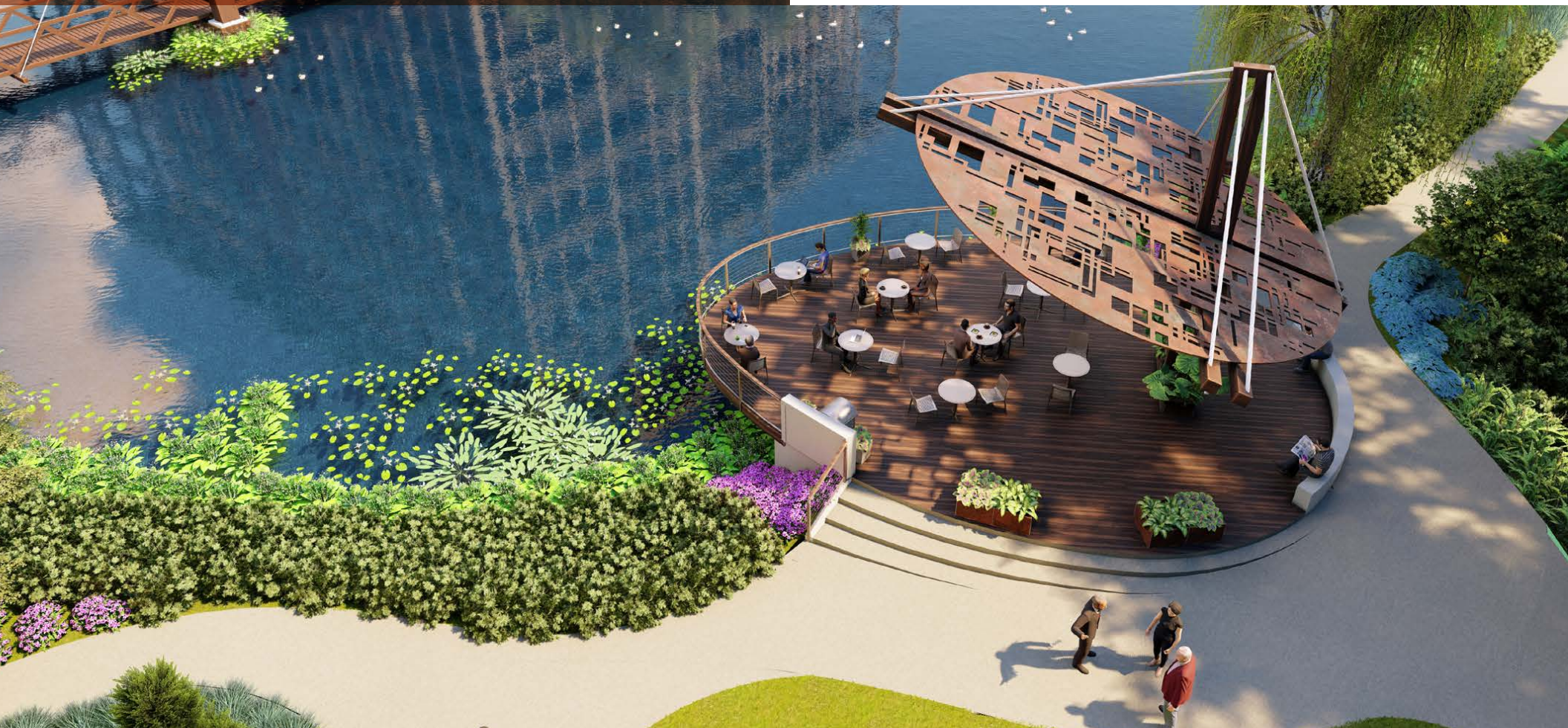
A PLACE FOR TALENT

With all of the elements for an unrivaled workplace environment, it's no wonder why top companies choose to office here. Terraces delivers a progressive vision for corporate innovators with efficient and flexible 50,000+ RSF floor plates and the unbound potential to create a space that extends your company culture.



PURSUE BALANCE

Extensive exterior landscape enhancements will join the Terraces North and South buildings for an elevated connection of people and place. Make wellness an integrated part of your day with walks around the lake and ample outdoor gathering space to take the workday outside.

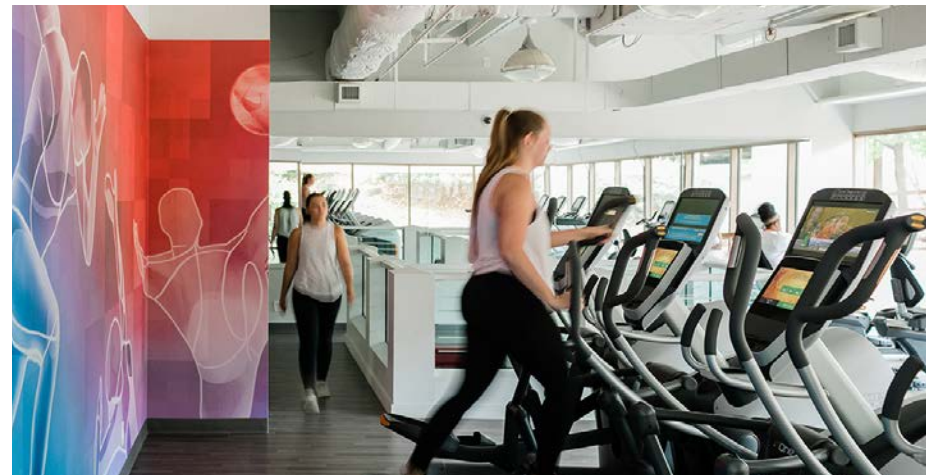




Abundant Communal Seating



Redesigned Conference Lobby



State-of-the-Art Fitness Center



SPACE DESIGNED FOR WORK AND WELLNESS

Contemporary lobbies create an elevated sense of arrival while on-site fitness center classes, rotating lunch options and a food truck program offer something to look forward to throughout your workday. From abundant communal space for collaborating to a boardroom and conference facility with modern technology, Terraces is more than a workspace - it's an interactive campus community.



Lakeside Seating & Walking Bridge



Common Furnished Balconies



Event Space & Putting Green



Abundant Shaded Seating

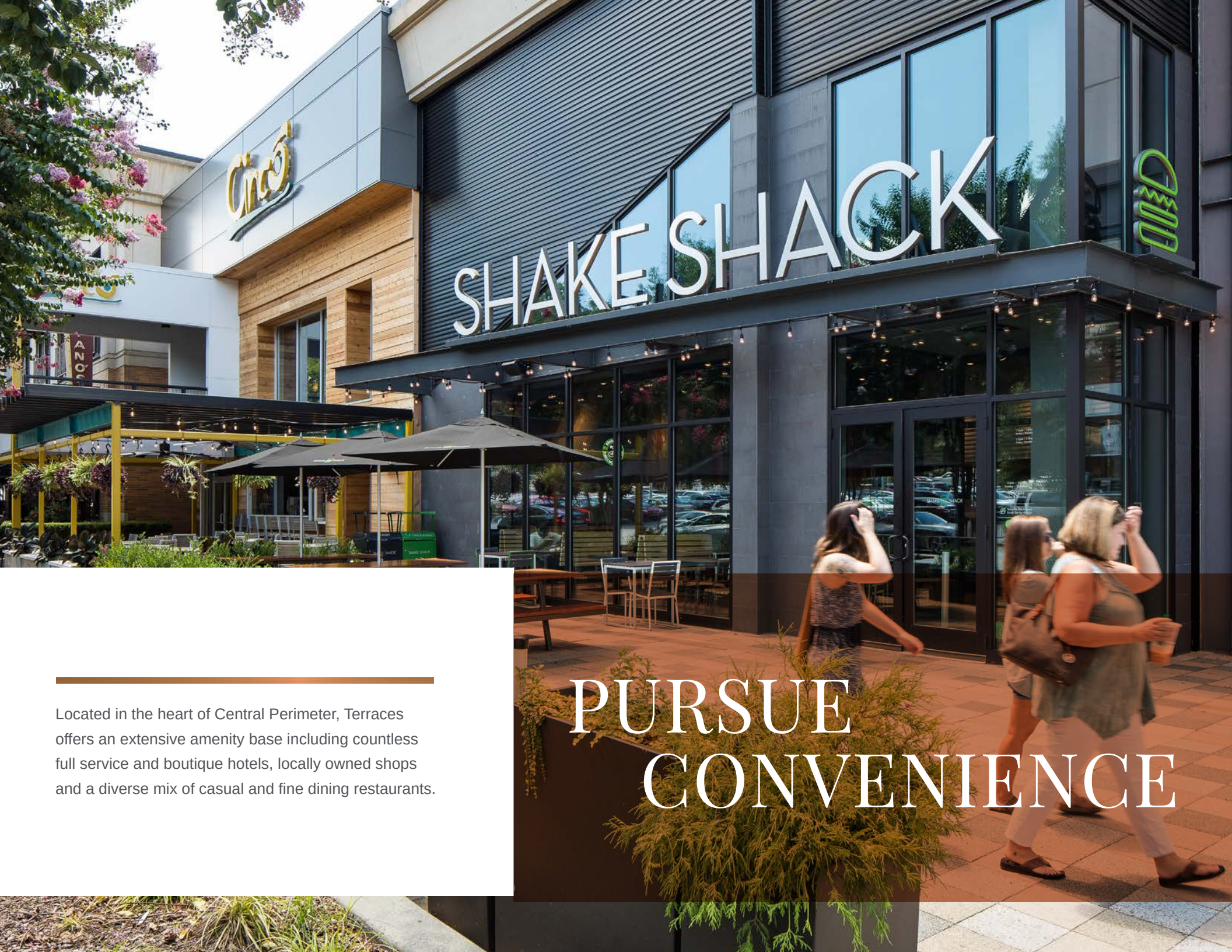


Lakeside Gathering Places



BRING YOUR WORK OUTSIDE

With open green space and outdoor collaborative work areas, employees have the opportunity to bring work outside of the office and into the Tree Grove, Lakeside Gathering or Garden Lawn.



SHAKE SHACK

Located in the heart of Central Perimeter, Terraces offers an extensive amenity base including countless full service and boutique hotels, locally owned shops and a diverse mix of casual and fine dining restaurants.

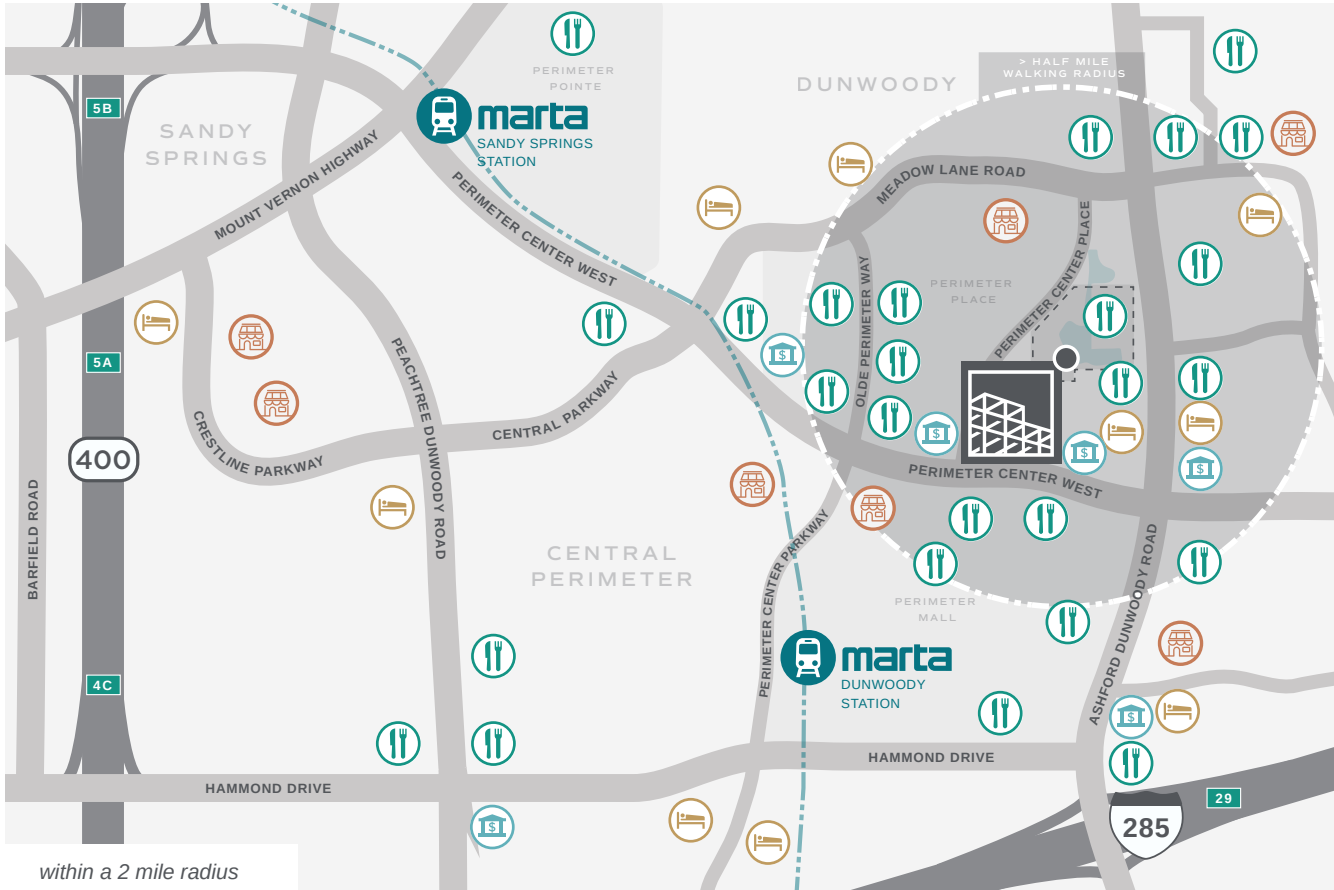
PURSUE CONVENIENCE



NEIGHBORHOOD ESSENTIALS OUTSIDE YOUR DOOR

A choice location with access for convenient commutes to the grocery store, business services and more. Close proximity to MARTA, GA 400 and I-285. It's all here, and it's yours for the taking.

VAST AMENITIES



within a 2 mile radius

OVER 20 WALKABLE DINING OPTIONS
within a half-mile radius



DIVERSE LODGING
with boutique and full-service options

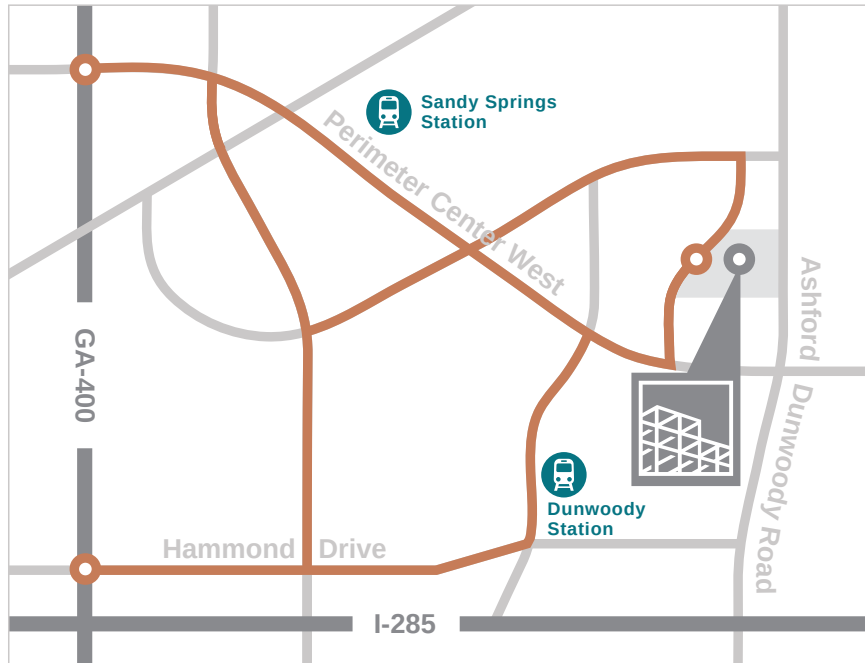


CONVENIENT ACCESS
to grocery and services

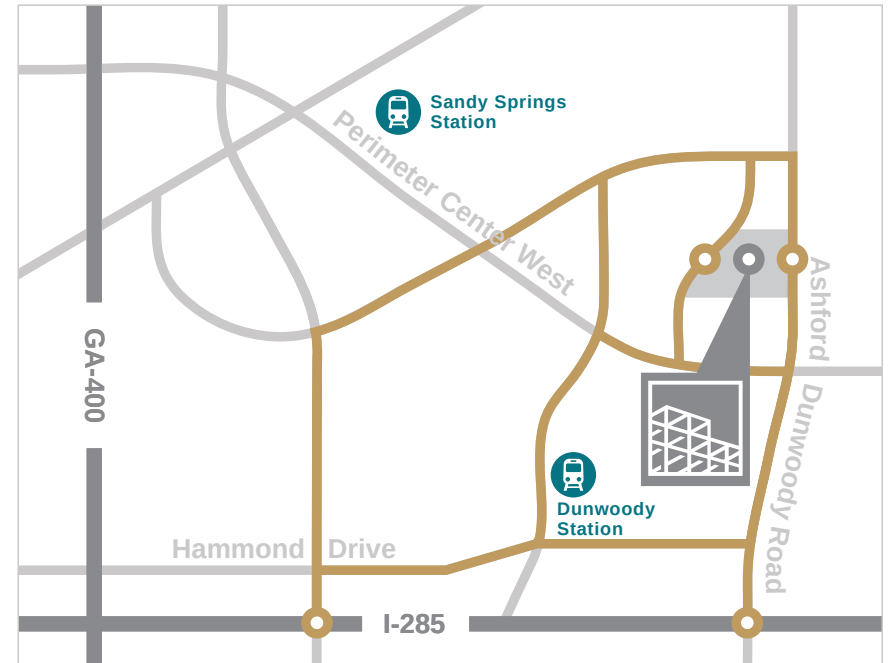


ACCESS AND COMMUTE HACKS

Enjoy unparalleled access to GA-400 and I-285 with a wide range of alternate back road routes to avoid rush hour traffic.



Variable access routes to GA-400



Variable access routes to I-285



EXCLUSIVE MARTA SHUTTLE SERVICE

- Departs from Dunwoody MARTA Station
- Arrives every 20-25 minutes
- Morning Route | 6:30 - 10:15 am
- Evening Route | 3:00 - 6:45 pm

LEVERAGE YOUR POTENTIAL



For more information, please contact:

Glenn Aspinwall

Glenn.Aspinwall@am.jll.com

404.995.2139

Brooke Dewey

Brooke.Dewey@am.jll.com

404.995.2138

Jones Lang LaSalle © 2019 Jones Lang LaSalle IP, Inc. All rights reserved. All information contained herein is from sources deemed reliable; however, no representation or warranty is made to the accuracy thereof.



NORTH 400 PERIMETER CENTER TERRACE

SOUTH 115 PERIMETER CENTER PLACE

ATLANTA 30346

TERRACESATL.COM