

PRESTIGIOUS CORPORATE ADDRESS



OFFICE SPACE FOR LEASE 4150 E. CONCOURS ST.

- Located within the 658-acre Ontario Center master-planned community
- Adjacent to Citizen's Business Bank Arena, Ontario Mills Mall, several hotels, restaurants, and fast-food
- Building and monument signage available
- Within 1 mile of the LA/Ontario International Airport and the Metrolink Station
- Excellent access to the I-10 and I-15



Property Description/Availability:

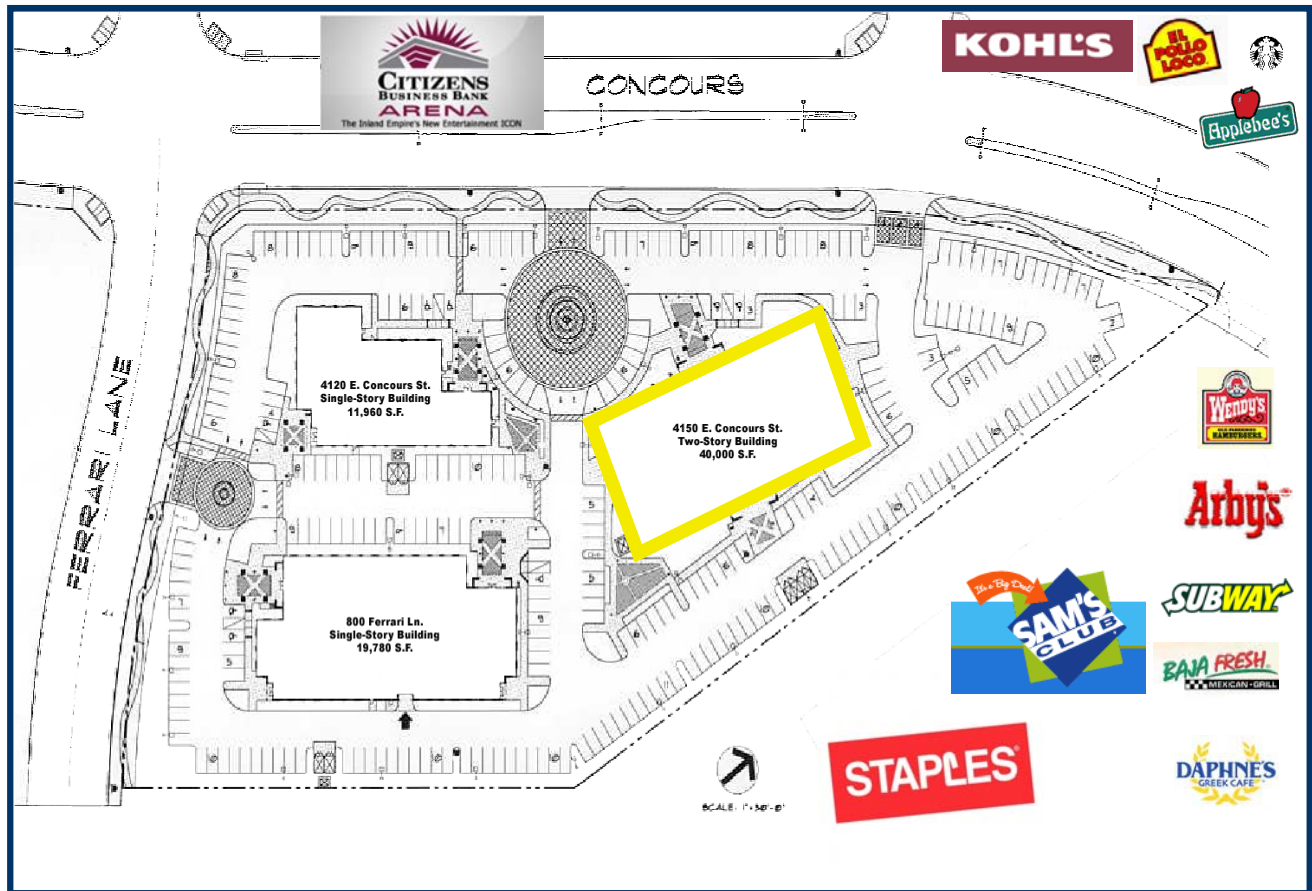
- Class "A" Office Environment
- Quality Granite and Marble Finishes
- Total Building Size: 40,000 SF
- Parking: 4:1,000
- Elevator Served
- 24-Hour Card Key Access

For Further Information, Contact:

JEFF BISCHOFBERGER
Senior Vice President
949.790.3149
jbischof@leeirvine.com
BRE# 01512151

GREG T. MARTIN
Senior Vice President/Principal
License #01001749
909.373.2904 - Direct
909.373.2995 - Fax

PRESTIGIOUS CORPORATE ADDRESS



For Further Information, Contact:

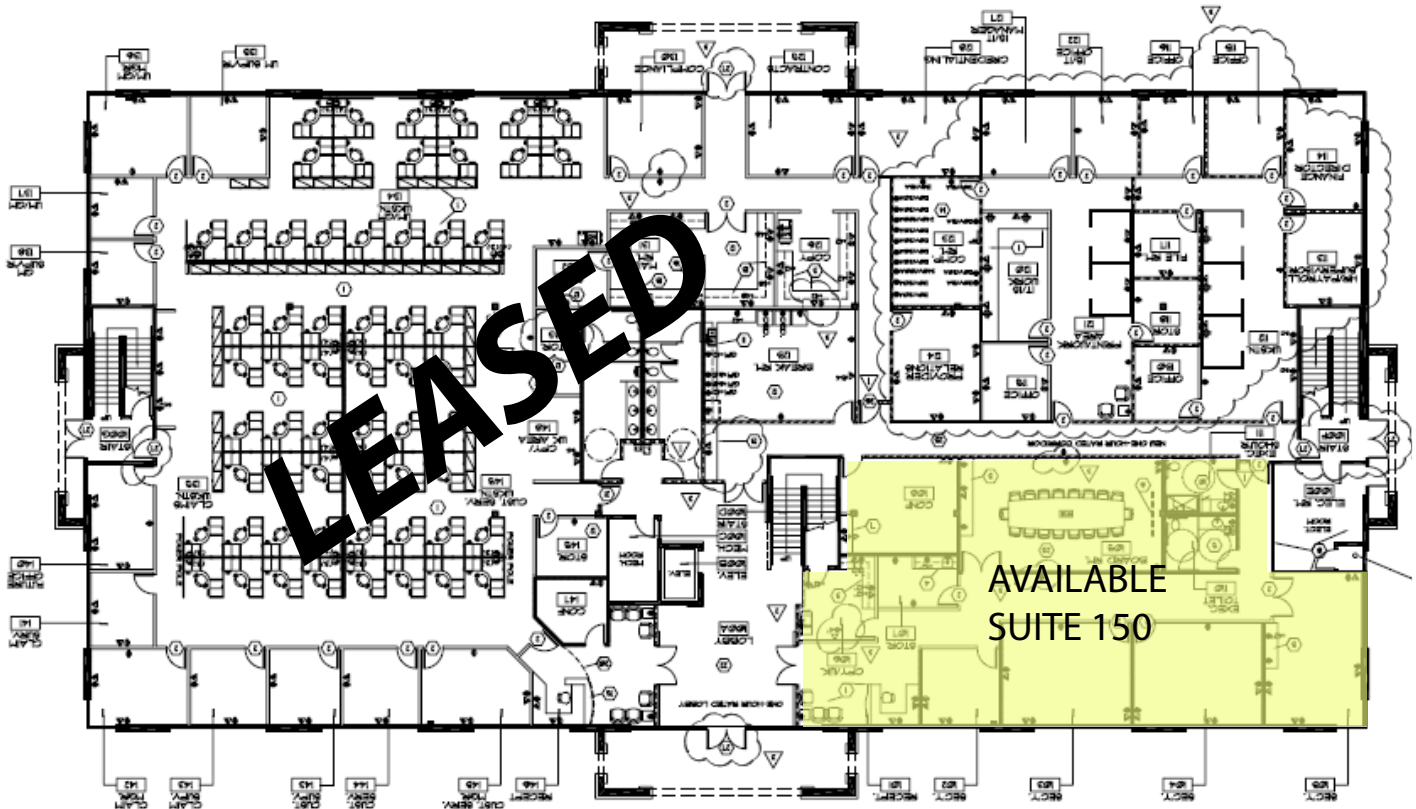
JEFF BISCHOFBERGER
Senior Vice President
949.790.3149
jbischof@leeirvine.com
BRE# 01512151

GREG T. MARTIN
Senior Vice President/Principal
License #01001749
909.373.2904 - Direct
909.373.2995 - Fax

PRESTIGIOUS CORPORATE ADDRESS

**First Floor
Suite 150
± 4,760 RSF**

Your Sign Here →



Front Door

For Further Information, Contact:

JEFF BISCHOFBERGER
Senior Vice President
949.790.3149
jbischof@leeirvine.com
BRE# 01512151

GREG T. MARTIN
Senior Vice President/Principal
License #01001749
909.373.2904 - Direct
909.373.2995 - Fax

PRESTIGIOUS CORPORATE ADDRESS

Second Floor Available Space Suite 260

AVAILABLE

SUITE 260

±4,357 RSF



For Further Information, Contact:

JEFF BISCHOFBERGER
Senior Vice President
949.790.3149
jbischof@leeirvine.com
BRE# 01512151

GREG T. MARTIN
Senior Vice President/Principal
License #01001749
909.373.2904 - Direct
909.373.2995 - Fax

LEE & ASSOCIATES®
COMMERCIAL REAL ESTATE SERVICES

Corporate ID# 01044791