

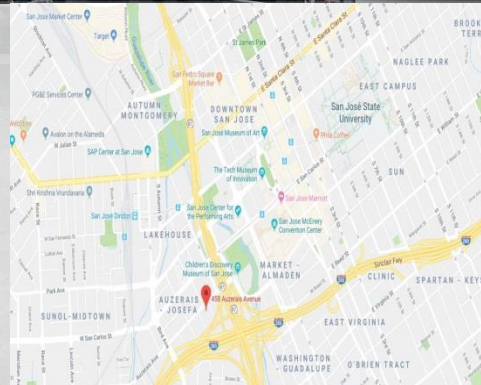


FOR SALE – Stand-Alone Industrial Building

458 Auzerais Avenue, San Jose



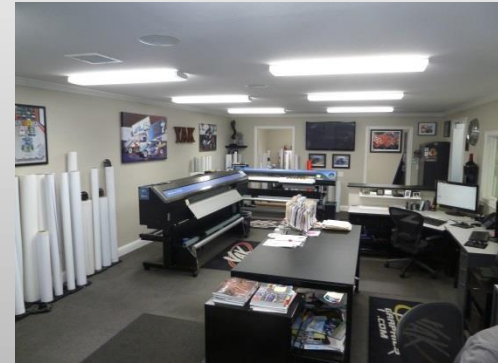
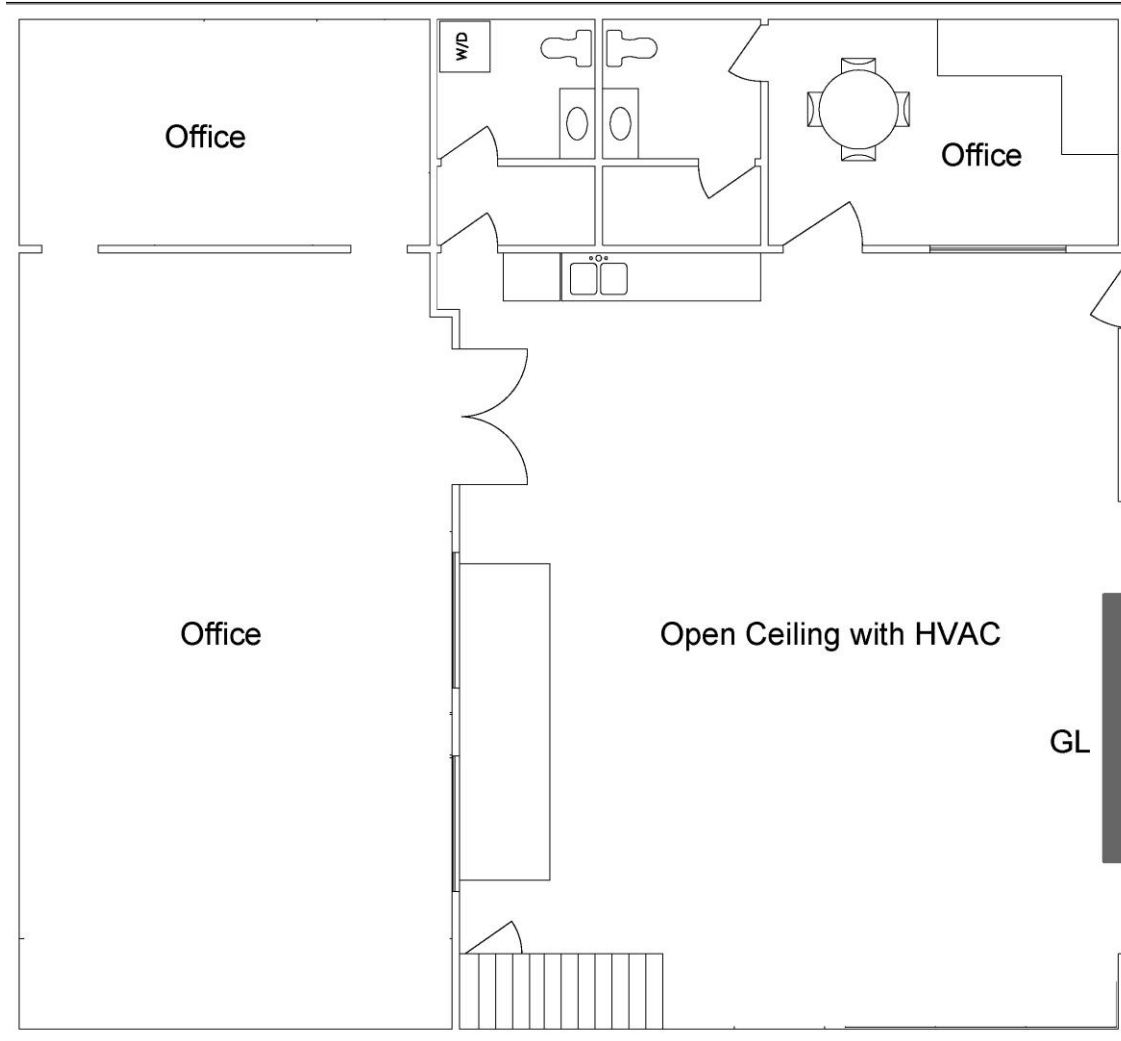
- Building Size: 2,300 SF
- Lot Size: 6,256 SF
- APN: 264-21-003
- Fully renovated in 2015
- Fenced/Gated Parking
- Easy access to 87/280
- Electric Roll Up Door
- Within 1 mile of proposed Google Campus
- Walking distance to Downtown SJ and Diridon Station
- Kitchen Area
- 2 Remodeled bathrooms
- 100% HVAC
- Mezzanine Storage
- Washer/dryer hookups
- Plug – n – play office



Kevin Peixoto
KPA Commercial, Inc.
408-557-0167
kevin@kpacommercial.com
www.kpacommercial.com
1725 S. Bascom Ave
Suite 1050
Campbell, CA 95008



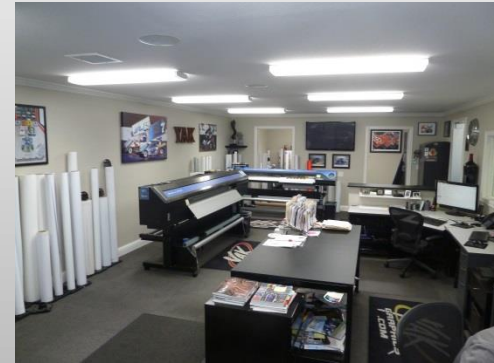
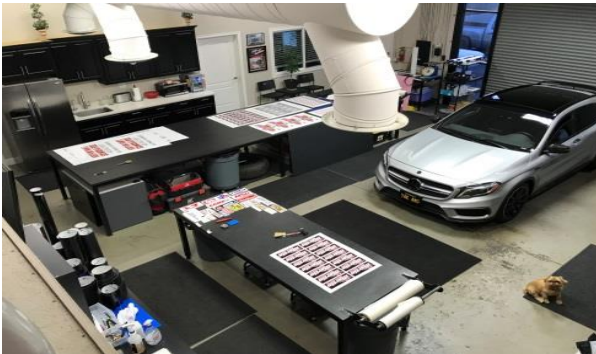
FOR SALE – Stand-Alone Industrial Building 458 Auzerais Avenue, San Jose



Kevin Peixoto
KPA Commercial, Inc.
408-557-0167
kevin@kpacommercial.com
www.kpacommercial.com
1725 S. Bascom Ave
Suite 1050
Campbell, CA 95008



FOR SALE – Stand-Alone Industrial Building 458 Auzerais Avenue, San Jose



Kevin Peixoto
KPA Commercial, Inc.
408-557-0167
kevin@kpacommercial.com
www.kpacommercial.com
1725 S. Bascom Ave
Suite 1050
Campbell, CA 95008