



155
Montague
Between Henry & Clinton Street **STREET**

Brooklyn Heights

ABOUT
The Spaces

SPACE A

Ground Floor

2,000 SF
+ outdoor seating

Basement

750 SF

Frontage

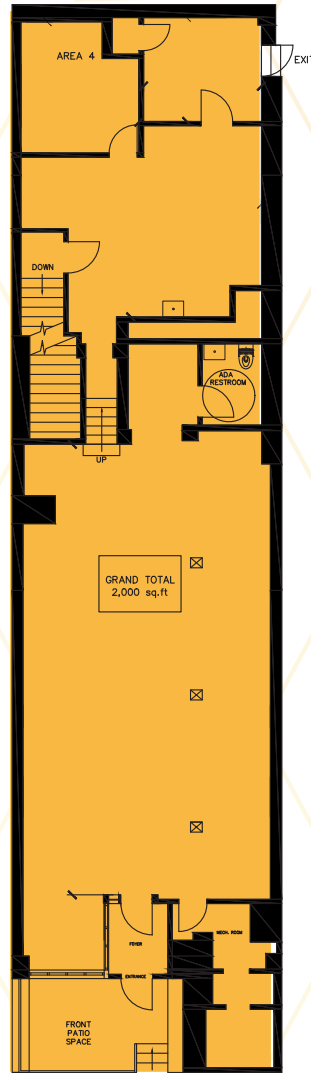
15'

Ceiling Height

11'

Possession

Immediate



CELLAR LEVEL

SPACE B

Second Floor

1,300 SF
+ outdoor patio

Frontage

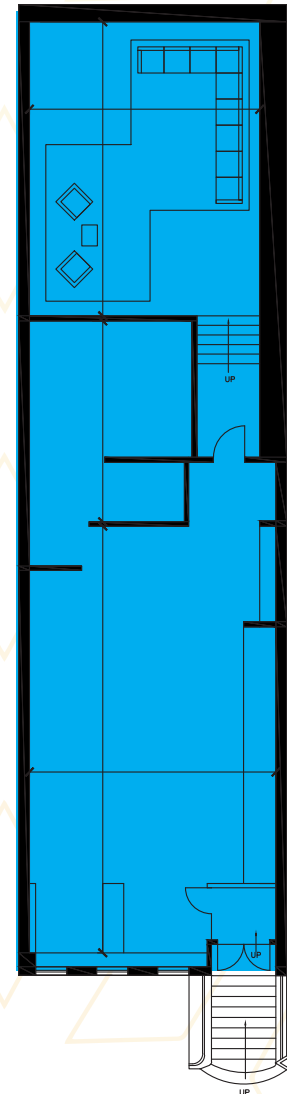
15'

Ceiling Height

11'

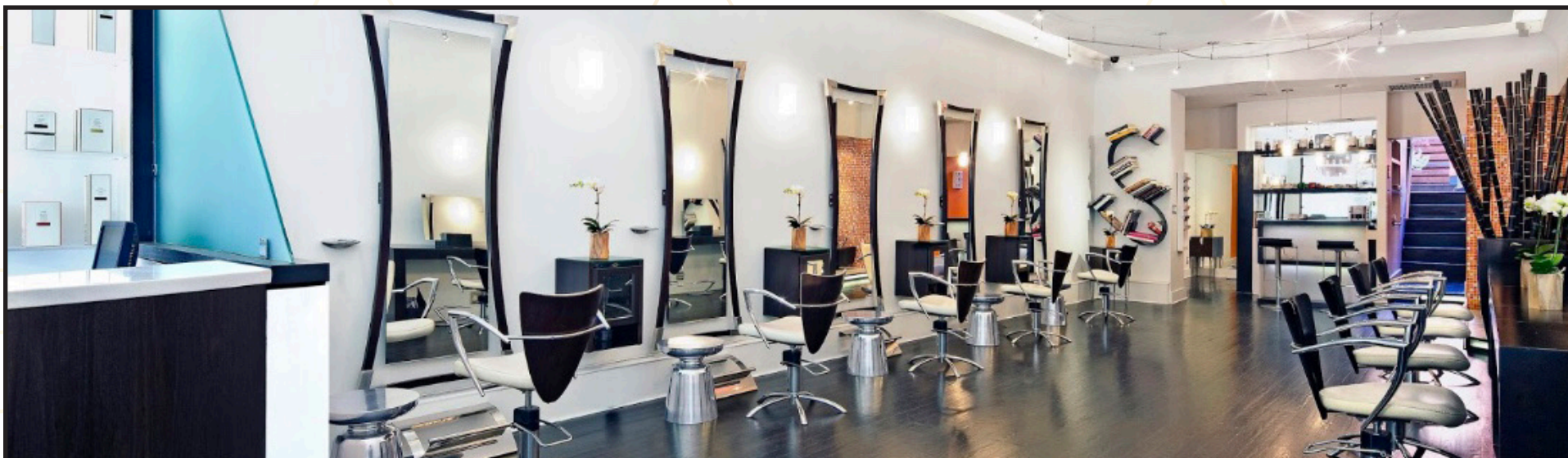
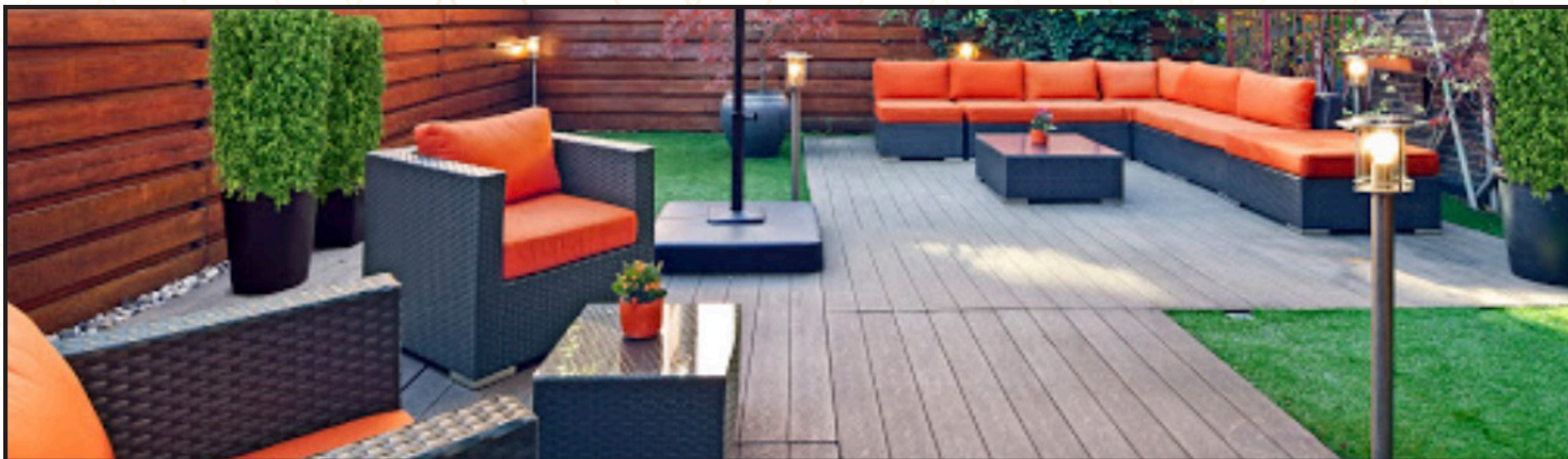
Possession

Immediate



UP

THE Second Floor



ABOUT The Area

Transportation

R 2 3 4 5 F A C

Comments

Premier location in dense, affluent high income neighborhood surrounded by major retailers, dining, offices

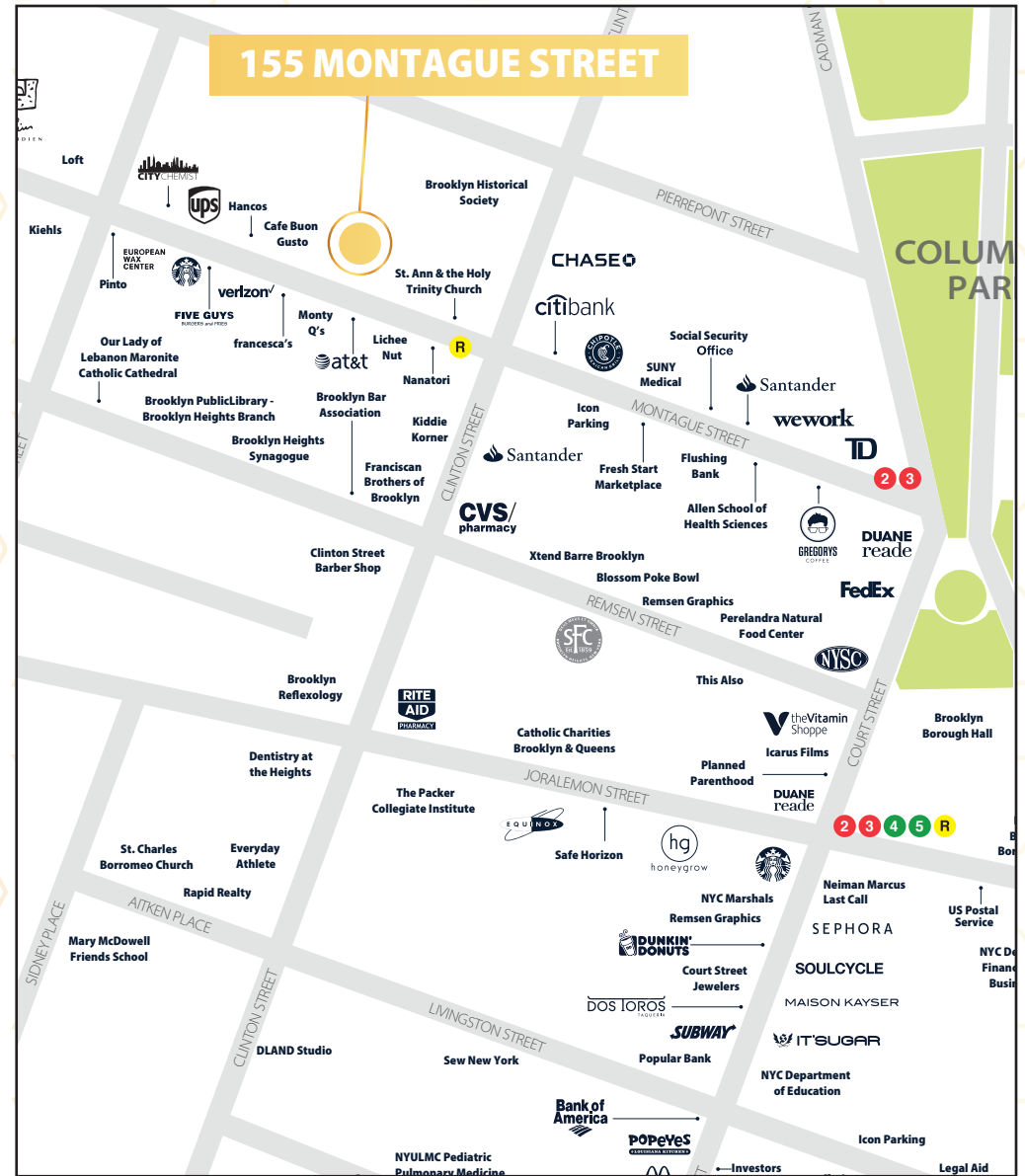
Landlord to deliver the space in white box condition

Heavy 7 day/week traffic

Ground floor is vented with HVAC

Spaces can be rented together or separately

Second Floor has gorgeous outdoor patio space



CONTACT OUR BROKER(S) FOR MORE INFORMATION

Dorel Melloul

347.922.4563

DMelloul@ksrny.com

Albert Manopla

212.380.8369

Amanopla@ksrny.com



KASSIN SABBAGH REALTY

1385 Broadway 22nd floor
New York, NY 10018
(212) 417 - 9217
www.ksrny.com