

# Newly Renovated Creative Office

# 485-487 3RD STREET

## FOR LEASE

AVAILABLE JUNE 1, 2020

Approx. 1,900-3,800 SF

San Francisco, California 94107



## \$50/sf/yr MG

- Flexible Term, 1-2 Year Term Available
- Full Floor Identities
- 1 Conf. Room, 1 Private Ofc, 1 Phone Room
- Real Hardwood Floors
- New LED Lighting Throughout
- Full Kitchen with Granite Counter Tops and Stainless Steel Appliances
- WebPass and Cat 6 Enabled
- Located near South Park
- Double Pane, Operable Windows
- Deliverable June 2020



EXCLUSIVE LISTING BROKER:

**ETHAN SOMMER**  
Vice President

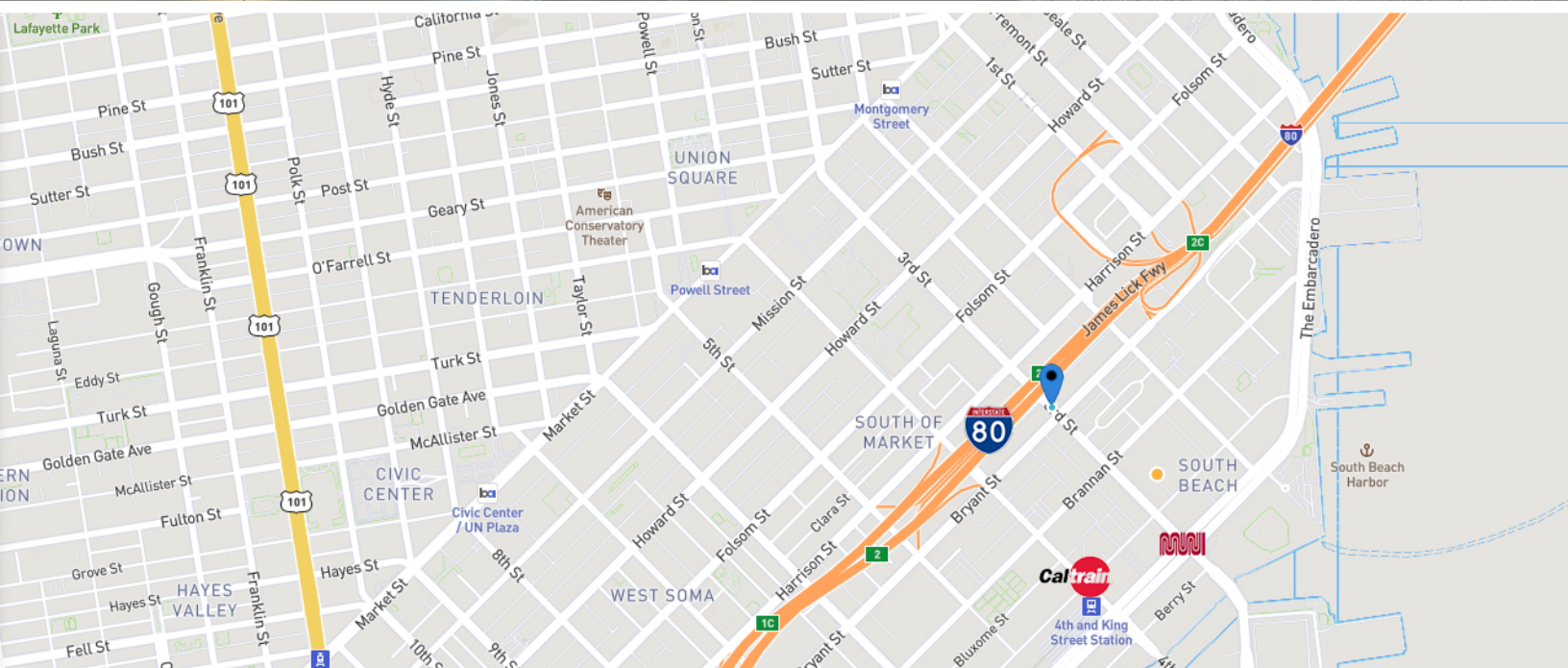
**(415) 358-2660**  
ethan@DPWcre.com

388 Market Street, Suite 1300  
San Francisco, California 94111  
CA BRE: 01925416

  
**DUNHILL PARTNERS WEST**  
Commercial Real Estate Brokerage & Investments

We have obtained the above information from sources we believe to be reliable, but no representations of any kind, expressed to implied, are being made as to the accuracy of such information. 05/14/20





EXCLUSIVE LISTING BROKER:

**ETHAN SOMMER**  
Vice President

**(415) 358-2660**  
ethan@DPWcre.com

388 Market Street, Suite 1300  
San Francisco, California 94111  
CA BRE: 01925416

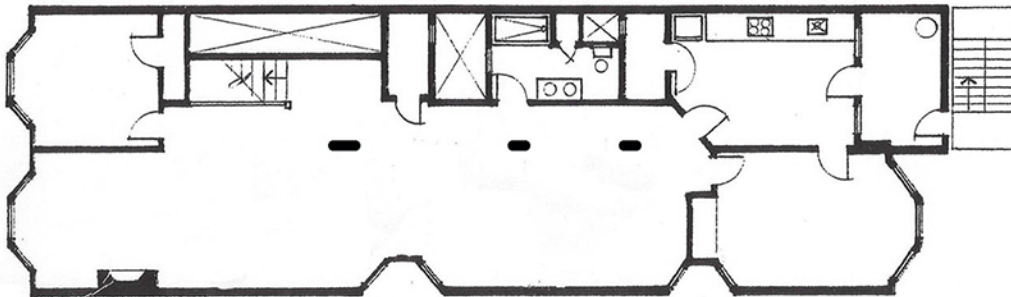
  
**DUNHILL PARTNERS WEST**  
Commercial Real Estate Brokerage & Investments

We have obtained the above information from sources we believe to be reliable, but no representations of any kind, expressed to implied, are being made as to the accuracy of such information.

485 3RD



487 3RD



EXCLUSIVE LISTING BROKER:

**ETHAN SOMMER**  
Vice President

**(415) 358-2660**  
ethan@DPWcre.com

388 Market Street, Suite 1300  
San Francisco, California 94111  
CA BRE: 01925416



We have obtained the above information from sources we believe to be reliable, but no representations of any kind, expressed to implied, are being made as to the accuracy of such information.