

Available For Lease

Southwest Corner of Hancock Avenue & Scottsdale Road • Tempe, Arizona



### 1428-1526 North Scottsdale Road • Tempe, Arizona 85281

For further information, please contact

**Michael A. Pollack**  
(480) 888-0888

**Size:** 3,800 Square Feet      **Spaces Starting From:** 800 Sq. Ft.

**Zoning:** C-2, City of Tempe

**Traffic Count:** Scottsdale Rd: 33,795 cars/day (between McKellips R. & Curry Rd.)  
(2009-2010 City of Tempe)

**Demographics:**

(2012 Applied Geographic Information / TR201 Geography)

	1 mile radius	3 mile radius	5 mile radius
Population:	11,116	107,645	287,826
Households:	4,625	46,211	122,782
Median Household Income:	\$ 44,678	\$ 42,043	\$ 47,395
Median Age:	29.4	29.7	31.9

For leasing plans, availability and rates, visit us at:

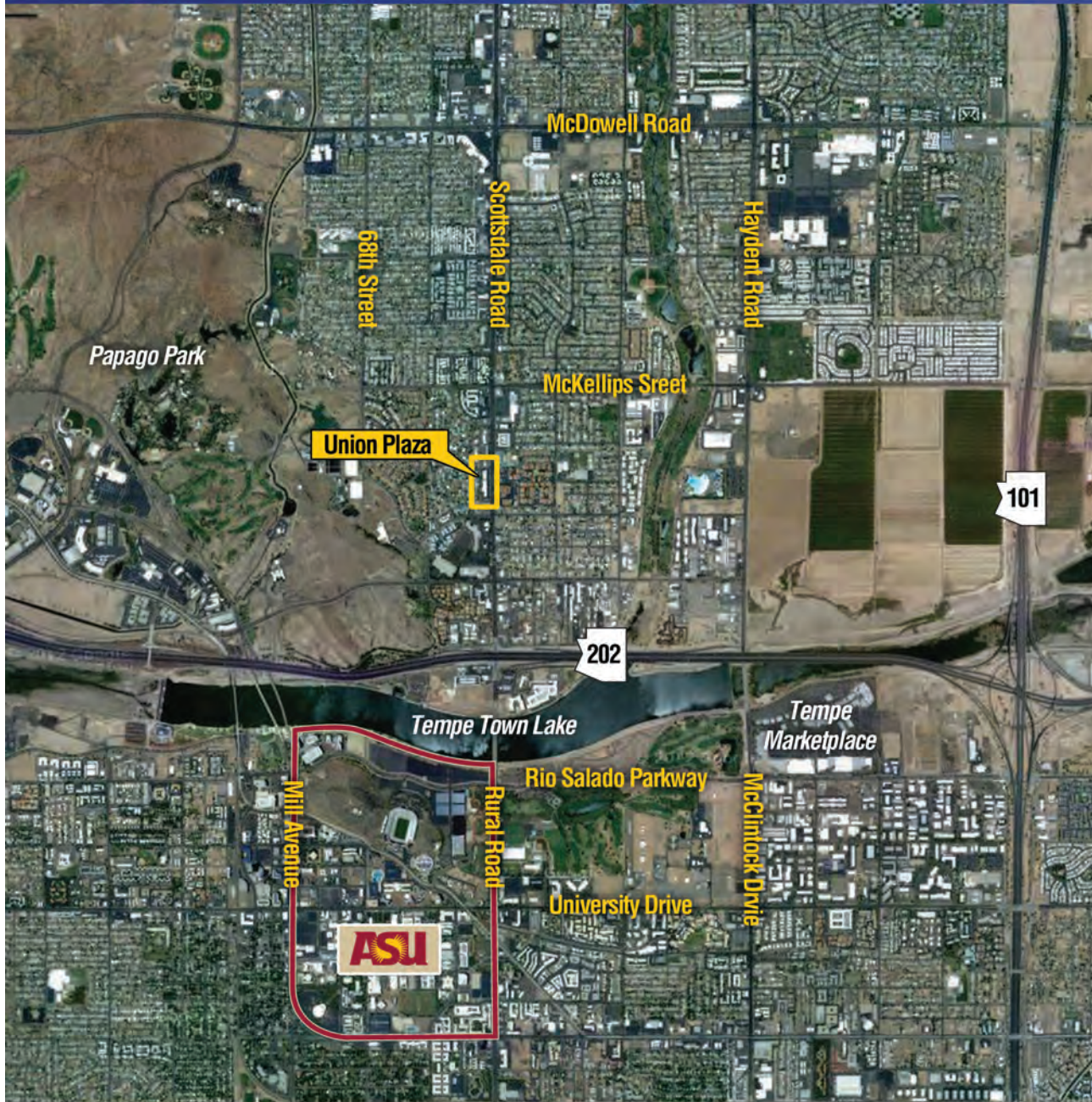
[www.pollackinvestments.com/unionplaza](http://www.pollackinvestments.com/unionplaza)



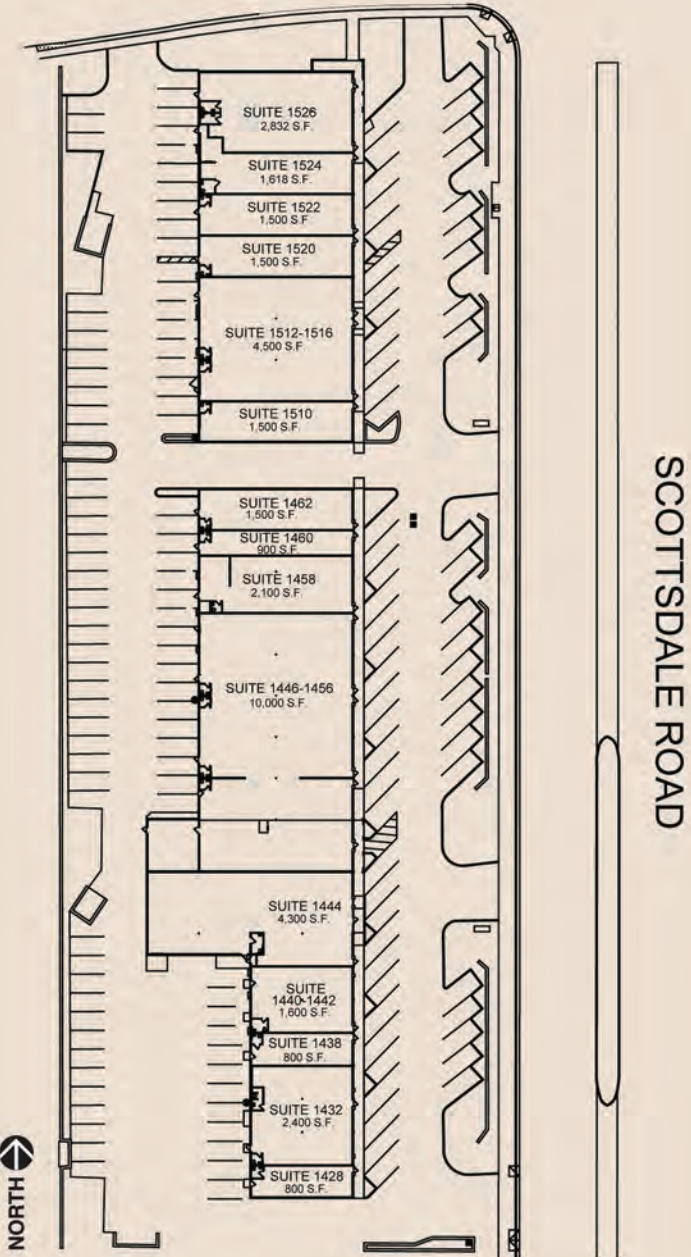
*Michael A. Pollack*  
**REAL ESTATE INVESTMENTS**

The information contained herein are estimates obtained from sources we deem reliable. While we have no reason to doubt its accuracy, we do not guarantee it.

1136 WEST BASELINE ROAD • MESA, ARIZONA 85210 • (480) 888-0888 • FAX (480) 814-7741 • WWW.POLLACKINVESTMENTS.COM



HANKOCK AVENUE



For further information, please contact  
**Michael A. Pollack**  
 (480) 888-0888

*Michael A. Pollack*  
**REAL ESTATE INVESTMENTS**

\* Square foot indications are approximate

1136 West Baseline Road • Mesa, Arizona 85210  
 (480) 888-0888 • fax (480) 814-7741 • [www.pollackinvestments.com](http://www.pollackinvestments.com)