

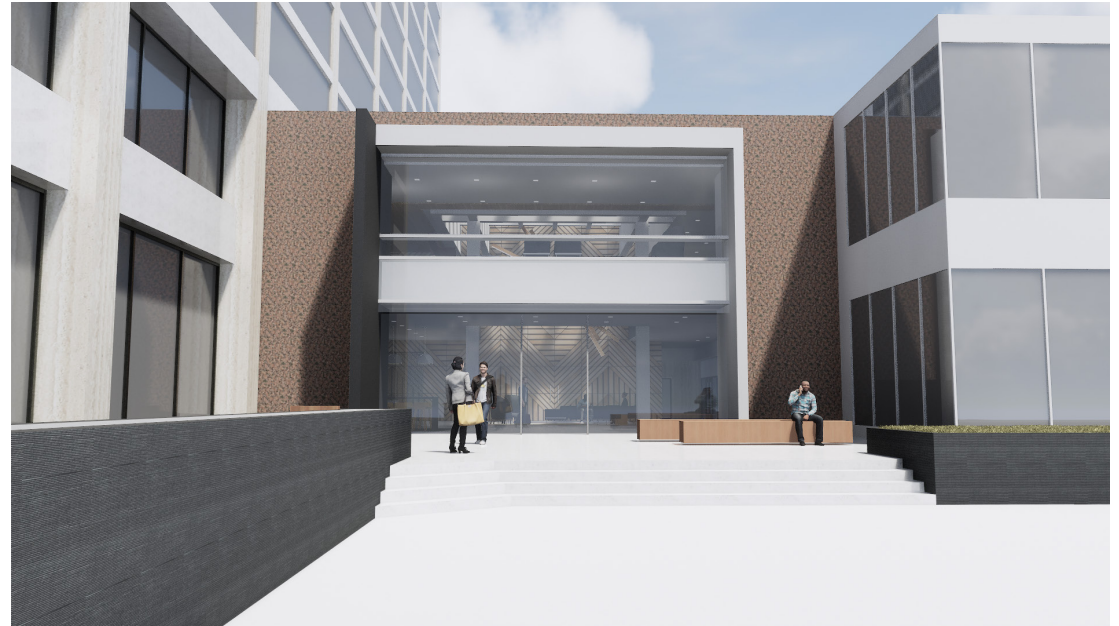
1390 MARKET

\$30 MM building transformation with best in class spec suites available



# New Building Lobby: Just Completed

- Large block availability, with access via internal staircase from the main lobby.
- Large underground garage.
- Extensive bike parking.
- New showers / locker room
- Stretching / yoga room
- Fully renovated lobby



# New Amenities

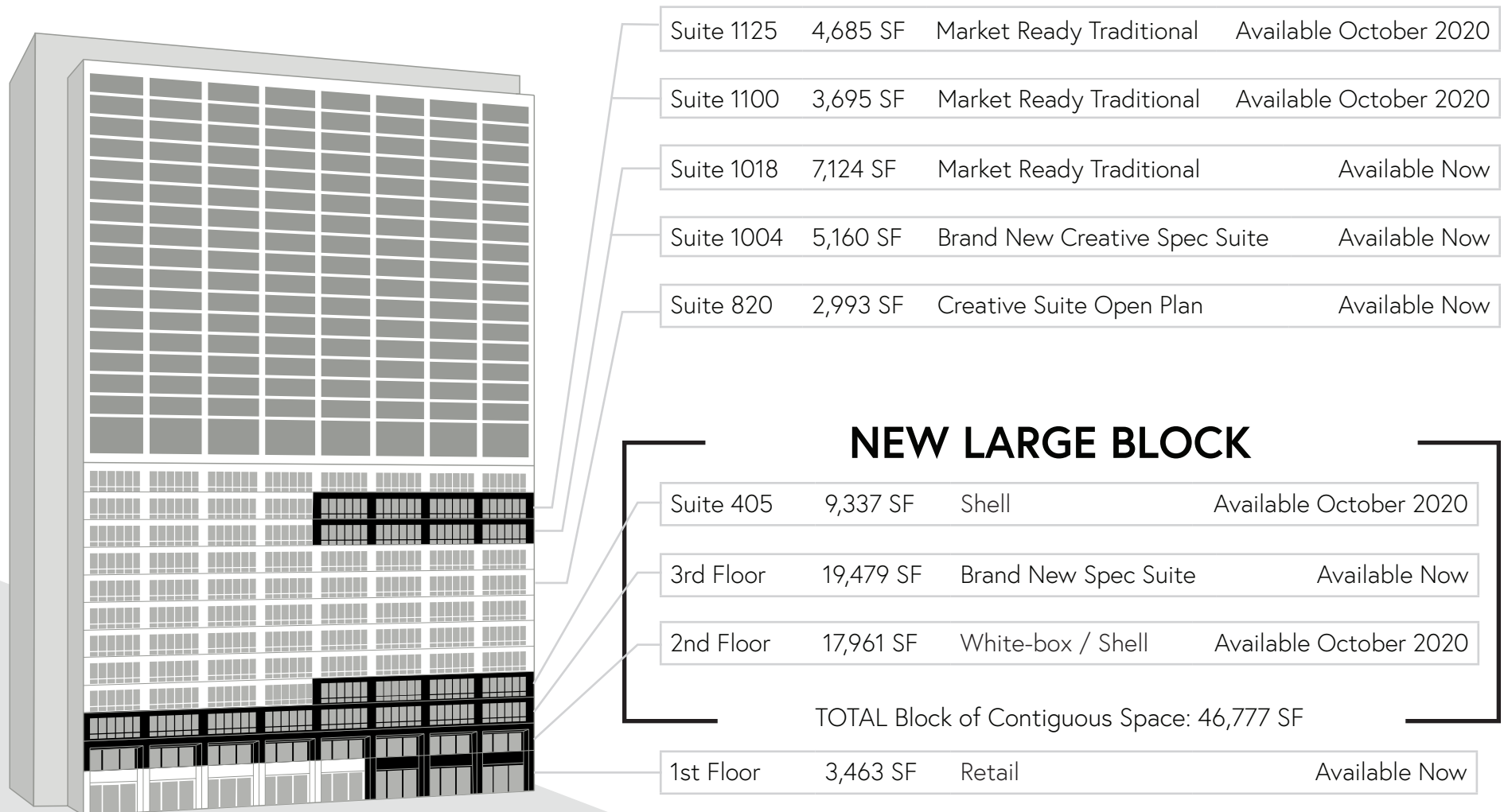


# Market Street Signage Opportunity



# Current Availabilities

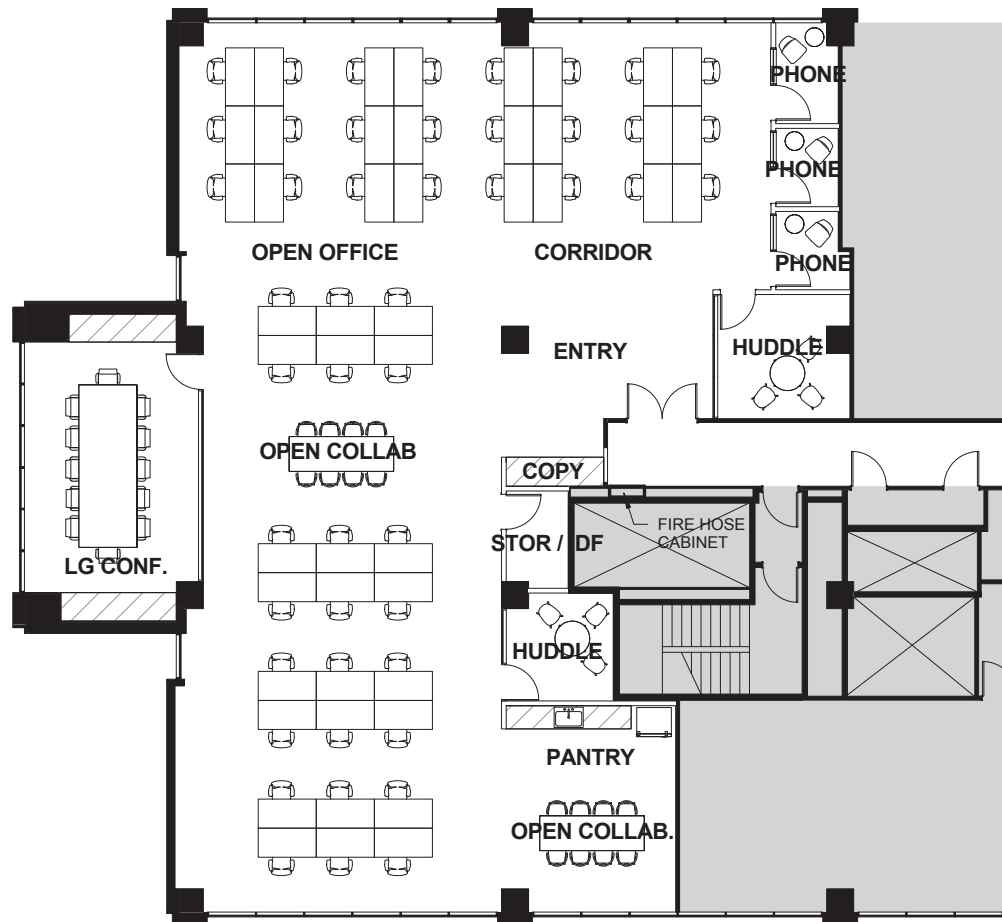
New institutional ownership! Major renovation underway, including new lobby, common areas and market ready spec suites.



# Brand New Spec Suite Complete!

Suite 1004 | 5,160 SF

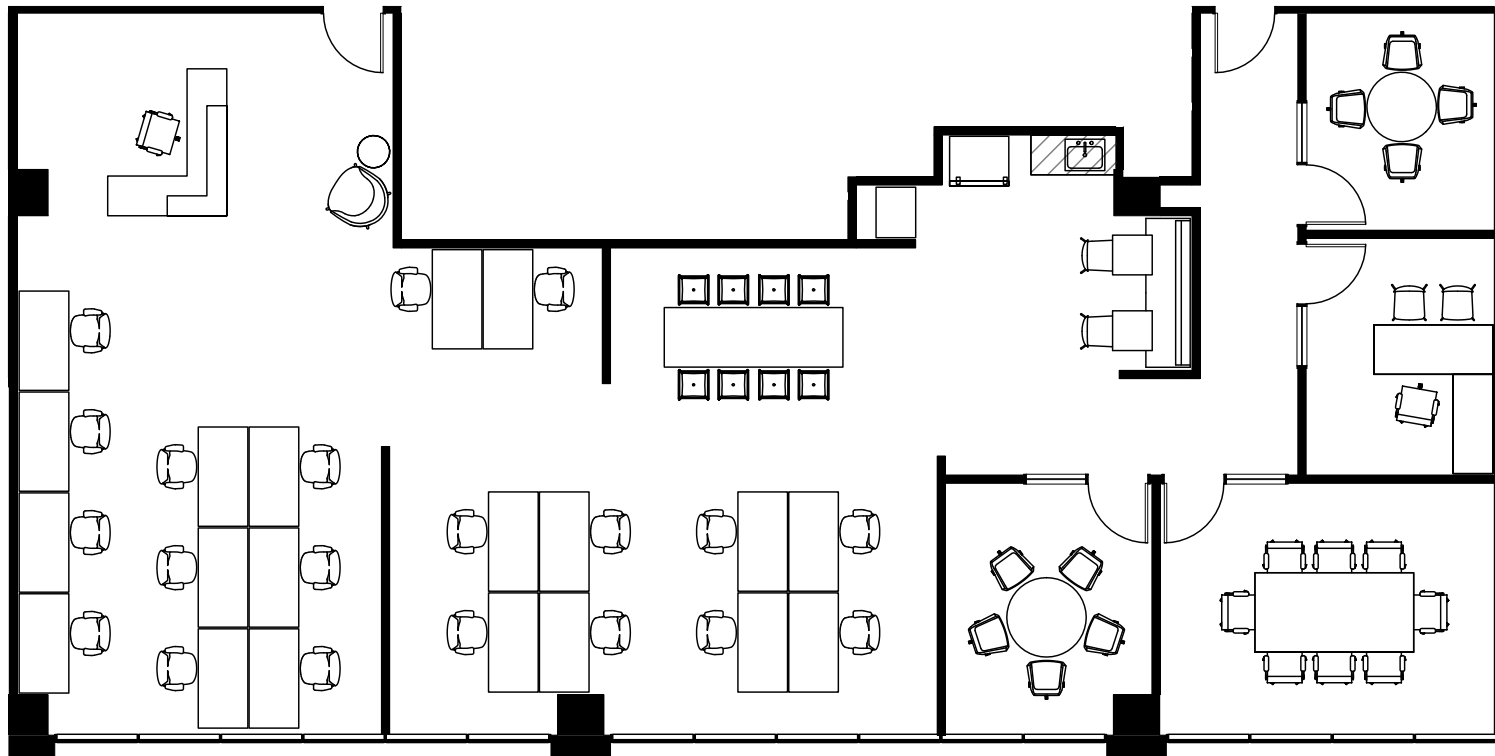
- New creative spec suite with exposed ceilings
- Large conference room, 2 medium conference rooms, 3 phone rooms
- Kitchen and large open area for 45+ workstations
- Available Now



# Market Ready Creative Suite

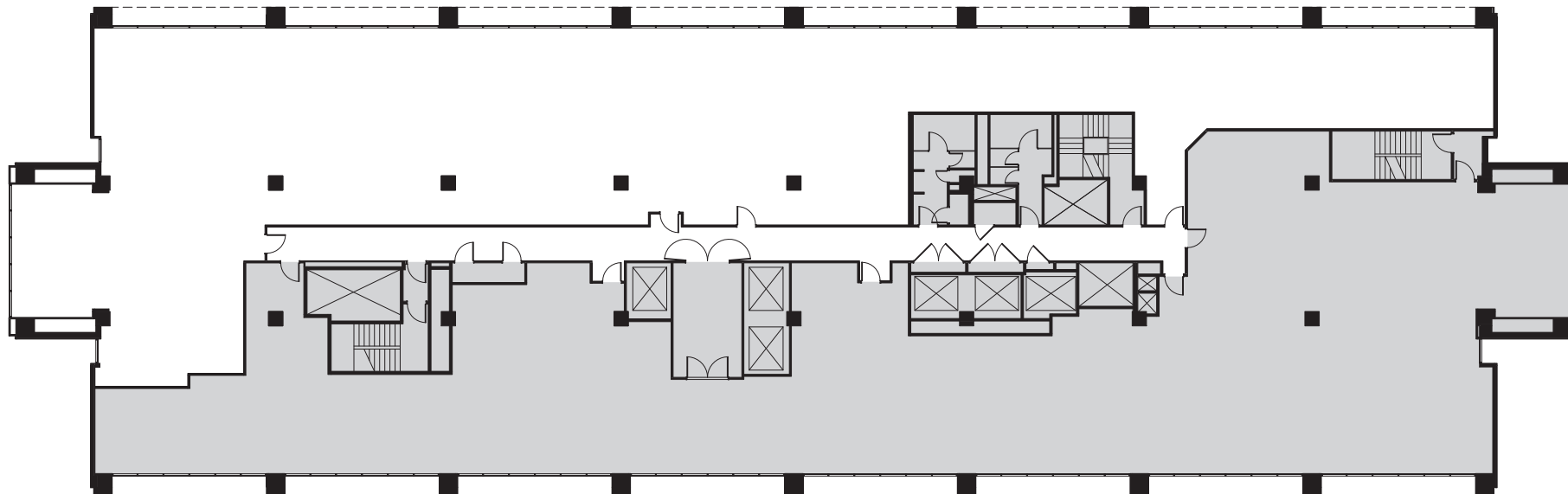
Suite 820 | 2,993 SF

- Creative suite with exposed ceilings
- 3 conference rooms, kitchenette, IT closet
- Available Now



## Suite 405 | 9,337 SF

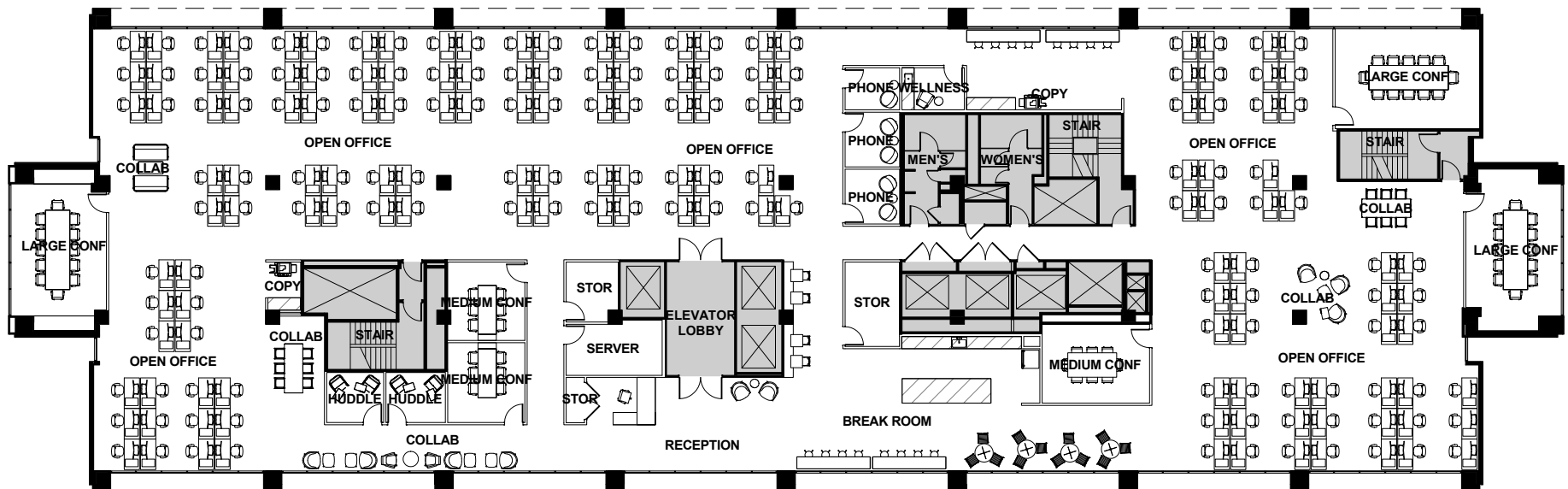
- Can be leased individually or combined with the 2nd and/or 3rd floors
- Delivered in shell condition
- Available October 2020



# Brand New Full Floor Spec Suite

3rd Floor | 19,479 SF

- Full floor, creative spec suite
- Open area for 150+ workstations
- 5 Conference Rooms
- 3 Phone Rooms
- Path to Growth
- Can be leased individually or combined with 2nd & 4th floors
- Prominent Market Street building signage available
- Available Now

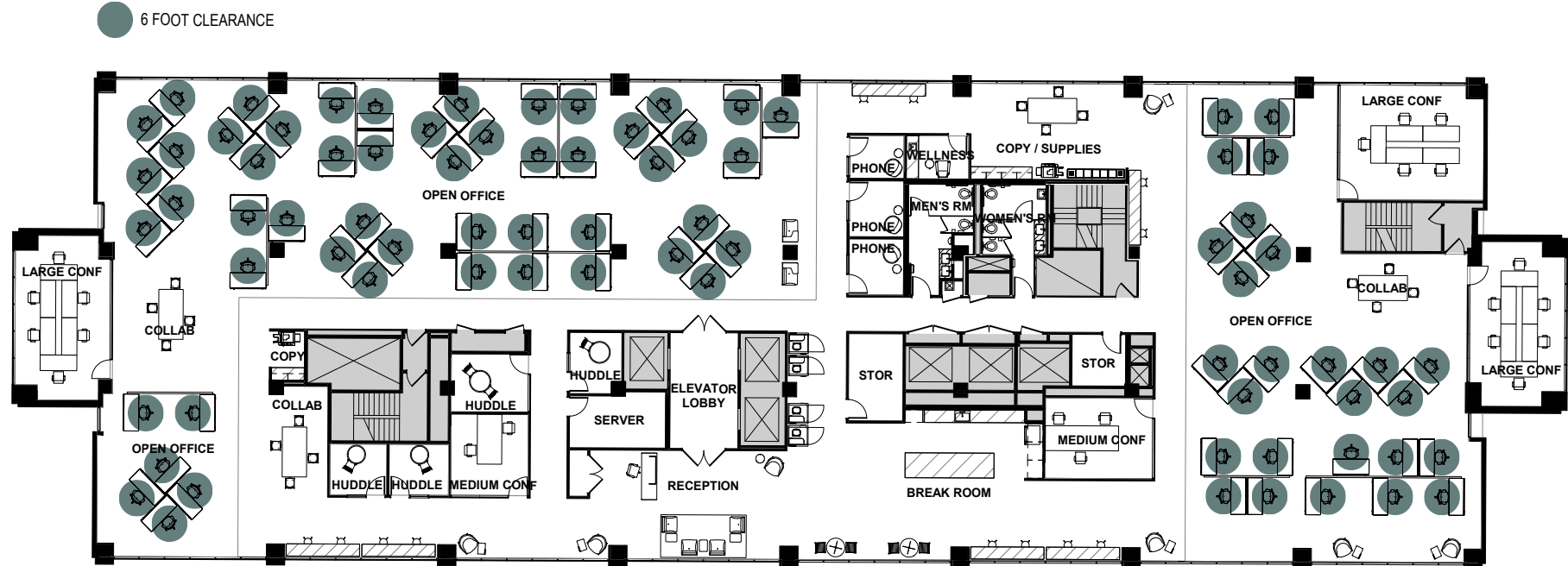


Construction Complete!

# Social Distancing Layout

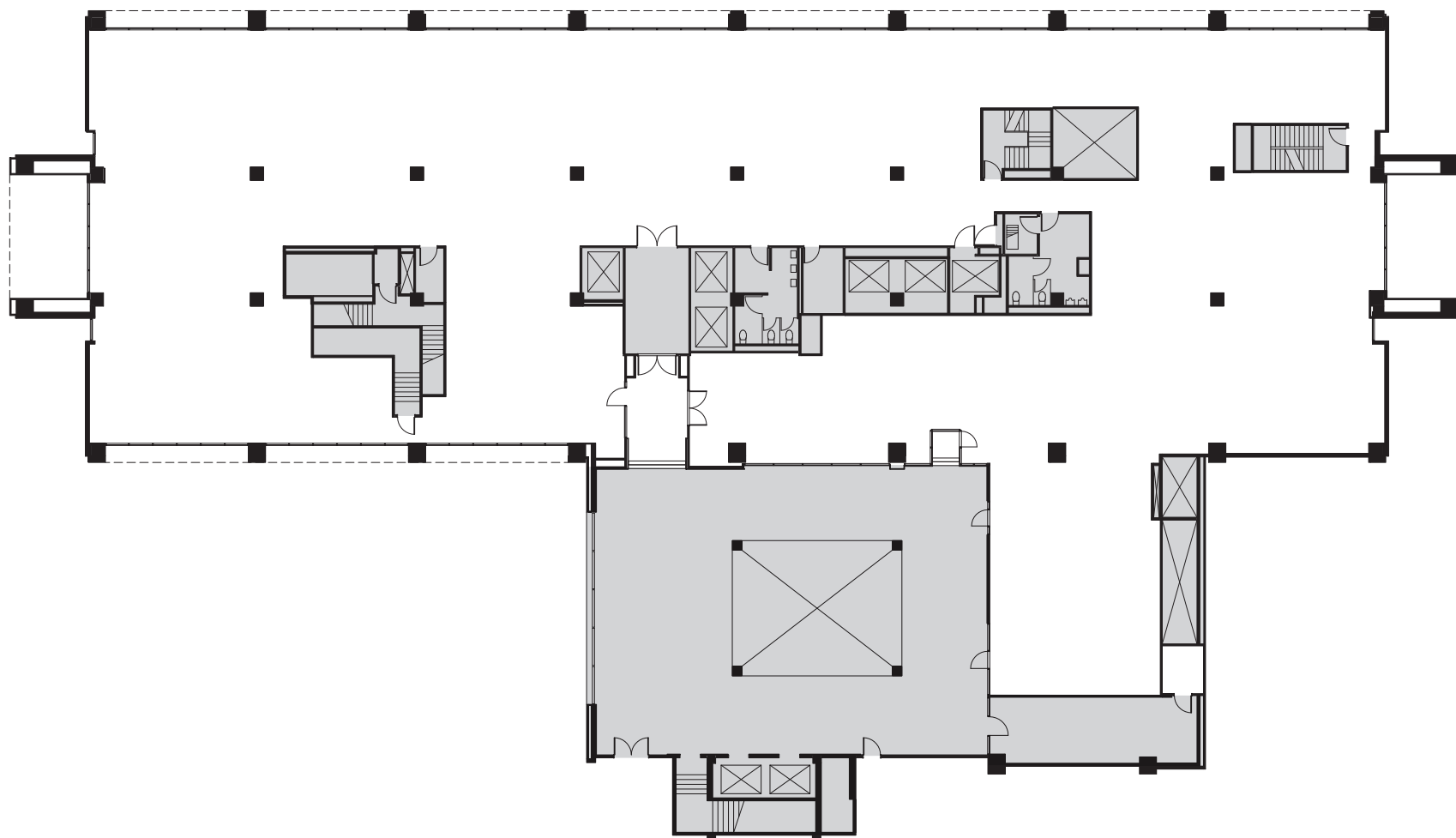
3rd Floor | 19,479 SF

- Full floor, creative spec suite
- Open area for 78 workstations
- 5 Conference Rooms
- 3 Phone Rooms
- Path to Growth
- Can be leased individually or combined with 2nd & 4th floors
- Prominent Market Street building signage available
- Available Now



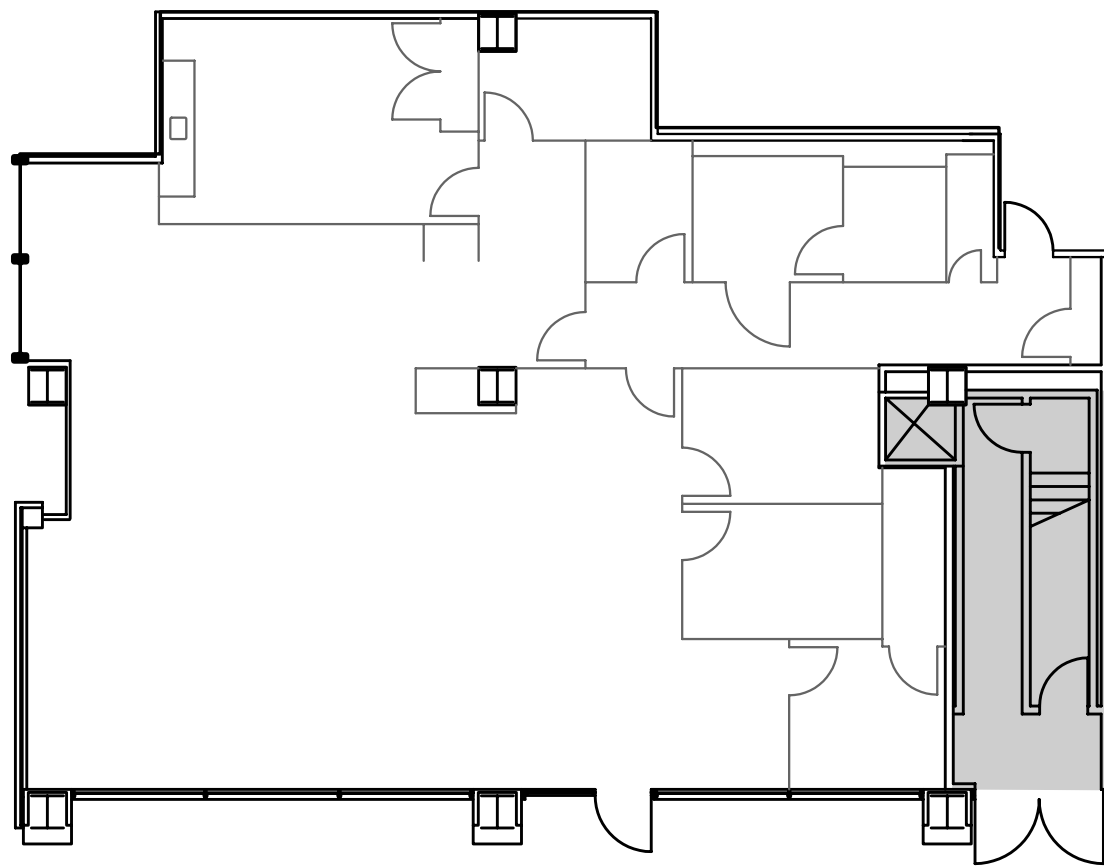
## 2nd Floor | 17,961 SF

- Direct access via internal staircase from the main lobby.
- Can be leased individually or combined with 3rd and 4th floors
- Delivered in shell condition
- Available October 2020



## Ground Floor | 3,463 SF

- Potential ground floor entrance for large block on floors 2, 3, & 4.
- Prominent Market Street signage.
- Delivered in shell condition.



# Neighborhood Amenities Map

14,274 residential units within a half mile radius. Centrally located in San Francisco's densest residential neighborhood. The surrounding area is benefiting from \$5 billion in investment, including a new Whole Foods.



## Over 30 food and beverage options within 2 blocks!

### FOOD & DRINK

- 1 Cadillac Bar & Grill
- 2 Andersen Bakery
- 3 Little Griddle
- 4 Starbucks
- 5 Cumaica Coffee
- 6 MA'velous Coffee
- 7 Barista & Brother
- 8 Mateo's
- 9 Corridor
- 10 Mr. Tipple's
- 11 The Beer Hall
- 12 Blue Bottle Coffee
- 13 Peets Coffee
- 14 Oddjob
- 15 Moya
- 16 The Perennial
- 17 Azalina's
- 18 Off the Grid Food Trucks

### HEALTH & FITNESS

- 1 Fitness SF
- 2 Orange Theory @NEMA
- 3 Black Box VR Gym

### HOTELS


- 1 Proper
- 2 Whitcomb
- 3 Yotel

### ENTERTAINMENT

- 1 Orpheum
- 2 Bill Graham Civic Auditorium

### CONVENIENCE STORES/GROCERY

- 1 Walgreens
- 2 Whole Foods

 The Market

5 MINUTE WALK TO  

1390 MARKET



**Dave Young**

415.773.3523

dave.young@cushwake.com

LIC #01752874

**Sam Wasserstein**

415.773.3528

sam.wasserstein@cushwake.com

LIC #01798616

**JD Lumpkin**

415.658.3648

jd.lumpkin@cushwake.com

LIC #01215057

