

DON'T MISS YOUR OPPORTUNITY TO BE PART OF THE MOST PRESTIGIOUS
NEW MEDICAL OFFICE BUILDING IN ORANGE COUNTY

2 JOURNEY MEDICAL PLAZA

Medical Office Building Available for Lease | Suite 108 - 1,429 SF | Located at the Most Prominent Corner in Aliso Viejo with Views

LAST
OPPORTUNITY
94% LEASED

LAST SUITE
1,430 SF
READY TO MOVE IN
MEDICAL OR DENTAL
(SEE PAGE 4 FOR PLAN)



PROPERTY FEATURES:

- New State-of-the-**LPA** Designed Building
- Elevated Building Design with Expansive Views of Aliso Viejo
- High Image Lobby with 2 Elevators
- Covered Parking for Physicians
- Green Building with Solar Panels
- Turn Key Tenant Improvements (Building Standard Medical Office Build-Out) Available for Limited Time
- 1,429 SF Ready to Move In Suite
- Monument Signage Available
- 5:1,000 Parking Ratio
- Highly Visible Location - Walking Distance to the Town Center Shops and Restaurants
- Another Quality Medical Office Development By



EXCLUSIVELY LISTED BY:

For more information, visit:
www.2JourneyMedical.com

Lee & Associates, Inc. - Irvine
9838 Research Drive
Irvine, California 92618
www.lee-associates.com

ALLEN BASSO
Senior Vice President
License ID# 01298152
949.790.3130
abasso@lee-associates.com

KURT BRUGGEMAN
Senior Vice President
License ID# 01264501
949.790.3125
kbruggeman@lee-associates.com



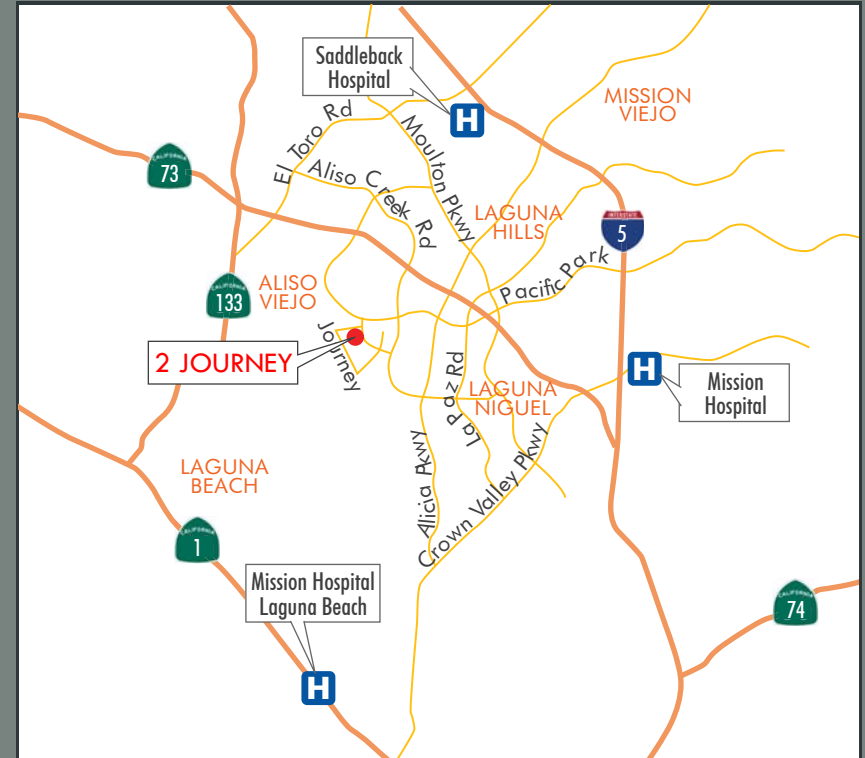
*No warranty or representation is made to the accuracy of the foregoing information. Terms of sale or lease and availability are subject to change or withdrawal without notice. Numbers are subject to change - each investor should perform its own due diligence.

COMMERCIAL REAL ESTATE SERVICES

DON'T MISS YOUR OPPORTUNITY TO BE PART OF THE MOST PRESTIGIOUS
NEW MEDICAL OFFICE BUILDING IN ORANGE COUNTY

2 JOURNEY MEDICAL PLAZA

Medical Office Building Available for Lease | Suite 108 - 1,429 SF | Located at the Most Prominent Corner in Aliso Viejo *with Views*



- DISTANCES:**
- > Adjacent to Public Library and National Gym
 - > Walking Distance to Aliso Viejo Town Center & Retail Amenities
 - > 3.9 Miles to Saddleback Hospital, Laguna Hills
 - > 5.3 Miles to Mission Hospital, Mission Viejo
 - > 7.9 Miles to Mission Hospital, Laguna Beach

EXCLUSIVELY LISTED BY:

For more information, visit:
www.2JourneyMedical.com

Lee & Associates, Inc. - Irvine
9838 Research Drive
Irvine, California 92618
www.lee-associates.com

ALLEN BASSO
Senior Vice President
License ID# 01298152
949.790.3130
abasso@lee-associates.com

KURT BRUGGEMAN
Senior Vice President
License ID# 01264501
949.790.3125
kbruggeman@lee-associates.com

LEE & ASSOCIATES

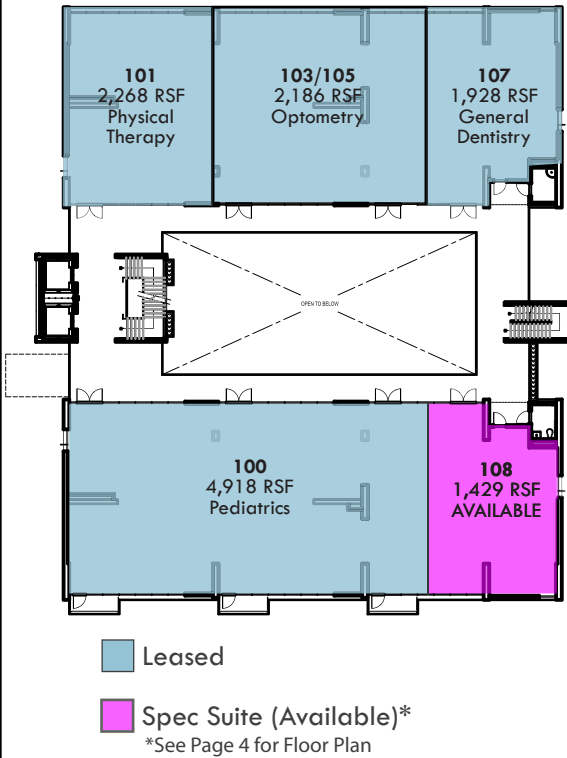
COMMERCIAL REAL ESTATE SERVICES

DON'T MISS YOUR OPPORTUNITY TO BE PART OF THE MOST PRESTIGIOUS
NEW MEDICAL OFFICE BUILDING IN ORANGE COUNTY

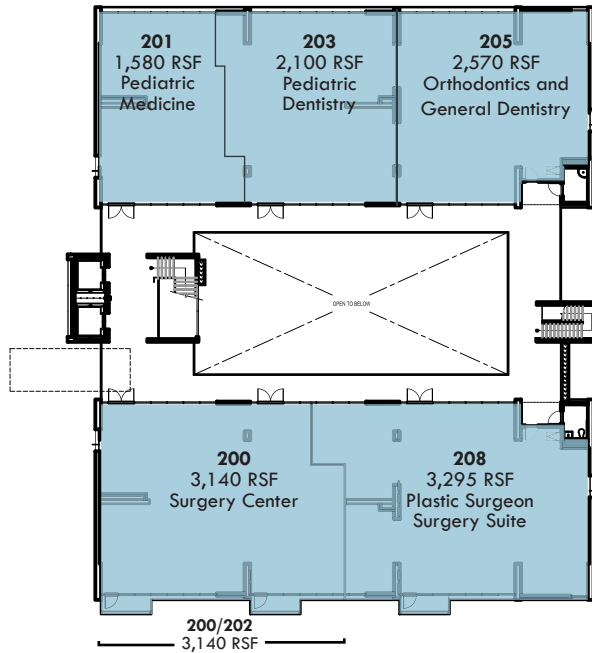
2 JOURNEY MEDICAL PLAZA

Medical Office Building Available for Lease | Suite 108 - 1,429 SF | Located at the Most Prominent Corner in Aliso Viejo with Views

First Level Floor Plan



Second Level Floor Plan



Sample floor plans for all applications are available upon request.



EXCLUSIVELY LISTED BY:

For more information, visit:
www.2JourneyMedical.com

Lee & Associates, Inc. - Irvine
 9838 Research Drive
 Irvine, California 92618
www.lee-associates.com

ALLEN BASSO
 Senior Vice President
 License ID# 01298152
 949.790.3130
abasso@lee-associates.com

KURT BRUGGEMAN
 Senior Vice President
 License ID# 01264501
 949.790.3125
kbruggeman@lee-associates.com



*No warranty or representation is made to the accuracy of the foregoing information. Terms of sale or lease and availability are subject to change or withdrawal without notice. Numbers are subject to change - each investor should perform its own due diligence.

DON'T MISS YOUR OPPORTUNITY TO BE PART OF THE MOST PRESTIGIOUS
NEW MEDICAL OFFICE BUILDING IN ORANGE COUNTY

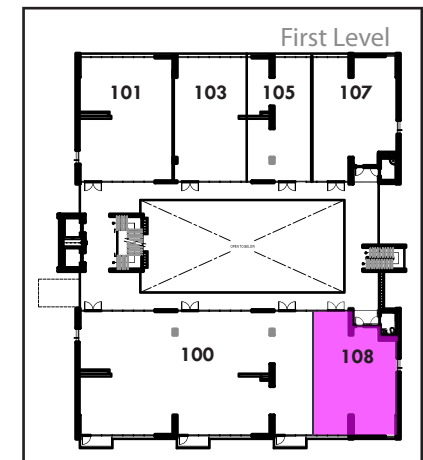
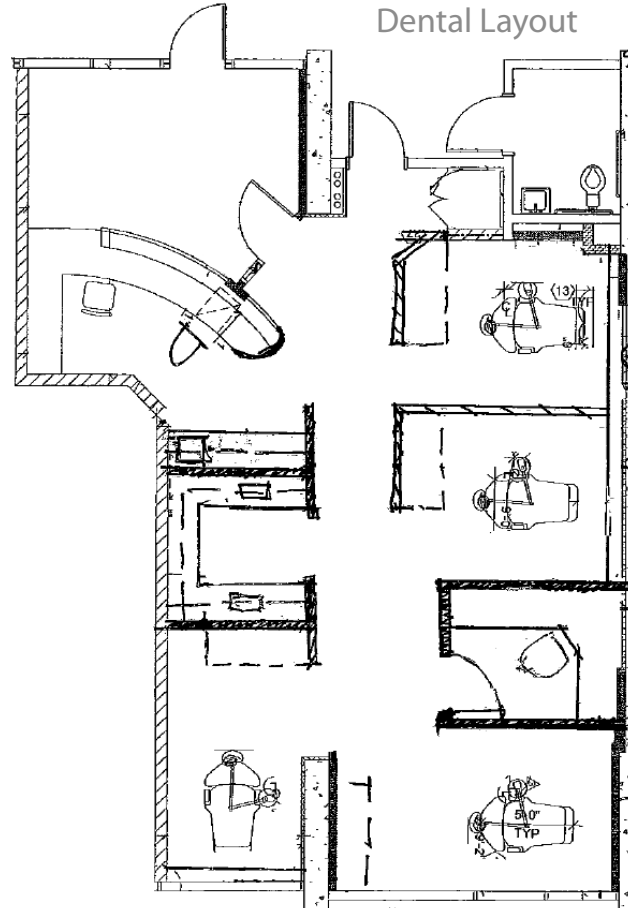
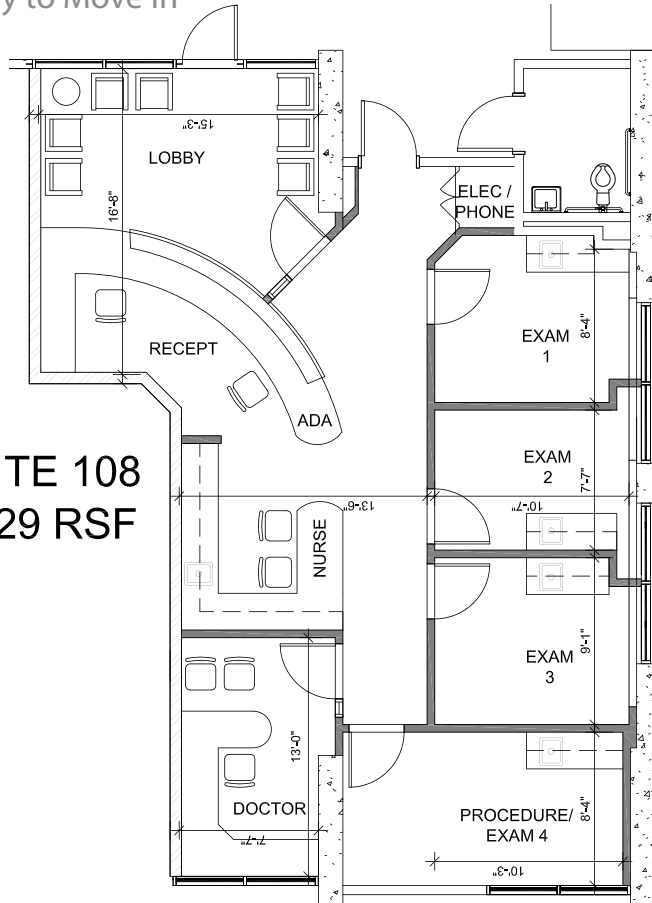
2 JOURNEY MEDICAL PLAZA

Medical Office Building Available for Lease | Suite 108 - 1,429 SF | Located at the Most Prominent Corner in Aliso Viejo with Views

Spec Suite
Ready to Move In

Hypothetical
Dental Layout

SUITE 108
1,429 RSF



EXCLUSIVELY LISTED BY:

For more information, visit:
www.2JourneyMedical.com

Lee & Associates, Inc. - Irvine
9838 Research Drive
Irvine, California 92618
www.lee-associates.com

ALLEN BASSO
Senior Vice President
License ID# 01298152
949.790.3130
abasso@lee-associates.com

KURT BRUGGEMAN
Senior Vice President
License ID# 01264501
949.790.3125
kbruggeman@lee-associates.com



*No warranty or representation is made to the accuracy of the foregoing information. Terms of sale or lease and availability are subject to change or withdrawal without notice. Numbers are subject to change - each investor should perform its own due diligence.

COMMERCIAL REAL ESTATE SERVICES