



# THE YORK BUILDING

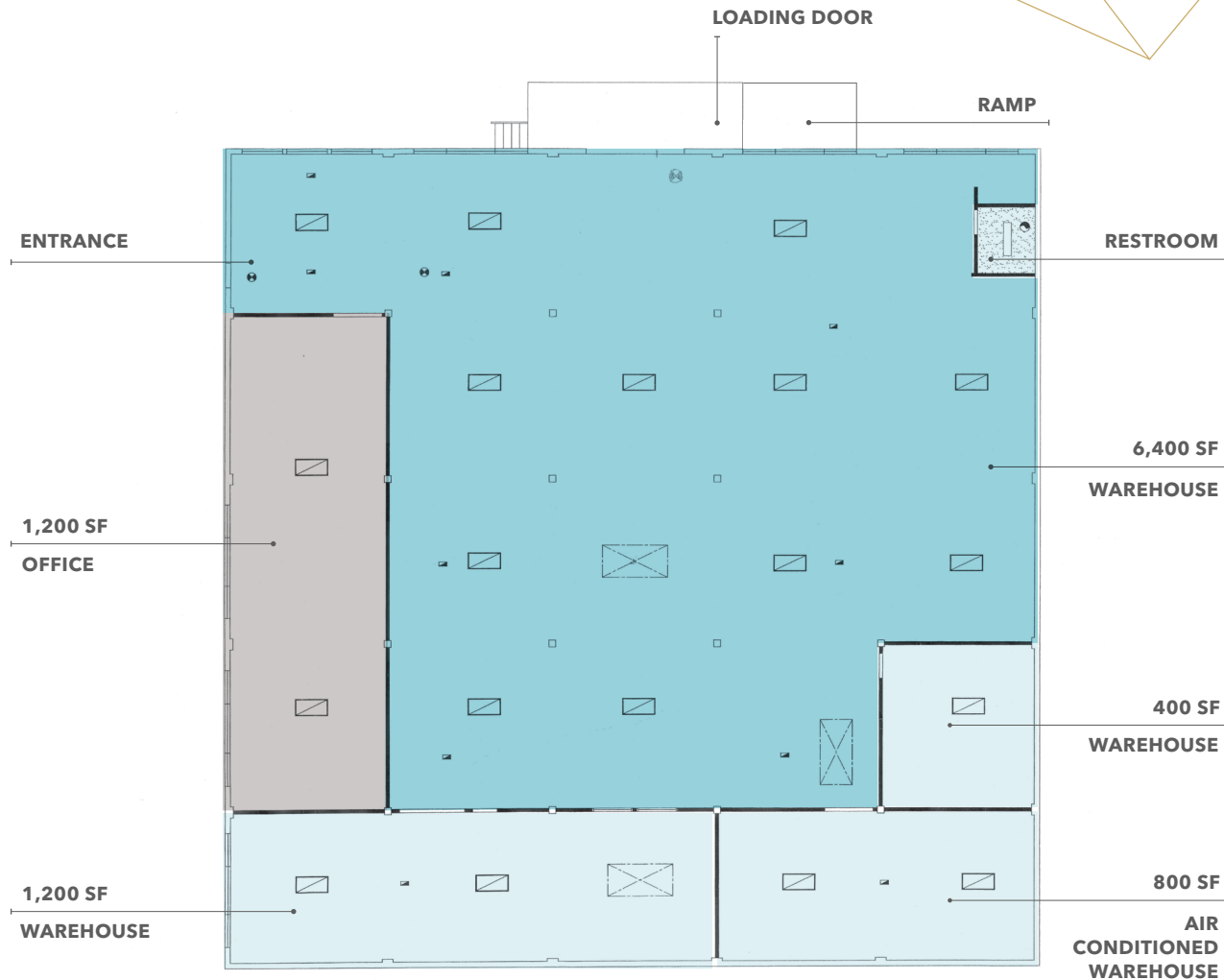
FOR LEASE | 10,000 SF STANDALONE LIGHT  
MANUFACTURING / PRODUCTION SPACE IN  
NORTHWEST PORTLAND  
2234 NW 24TH AVENUE, PORTLAND, OR

 **Kidder  
Mathews**

**FOR LEASE**

# The York Building

2234 NW 24TH AVENUE, PORTLAND, OR



**NOW**

DATE AVAILABLE

**10,000**

SQUARE FEET

**\$0.75/  
SF, NNN**

LEASE RATE

**PROPERTY FEATURES**

**DUAL** dock / grade level loading door

**OFFICE** space: 1,200 SF

**T5** florescent lighting

**SPRINKLER** system

**ADA** restroom

**HEAVY** power

**PARKING** available to lease at multiple neighboring sites

**ZACH FRANCIS**  
Executive Vice President  
503.221.2290  
zach.francis@kidder.com

**KARLA HANSEN**  
Vice President  
503.721.2727  
karla.hansen@kidder.com

**KIDDER.COM**

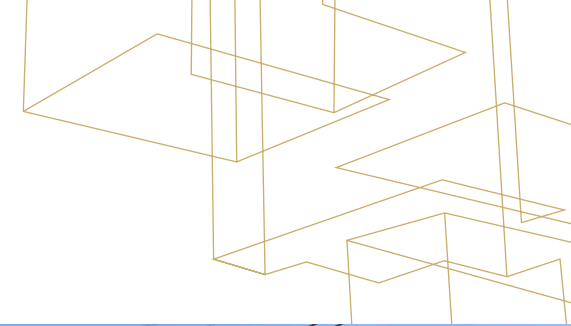
This information supplied herein is from sources we deem reliable. It is provided without any representation, warranty, or guarantee, expressed or implied as to its accuracy. Prospective Buyer or Tenant should conduct an independent investigation and verification of all matters deemed to be material, including, but not limited to, statements of income and expenses. Consult your attorney, accountant, or other professional advisor.



**FOR LEASE**

# The York Building

2234 NW 24TH AVENUE, PORTLAND, OR



**ZACH FRANCIS**  
Executive Vice President  
503.221.2290  
[zach.francis@kidder.com](mailto:zach.francis@kidder.com)

**KARLA HANSEN**  
Vice President  
503.721.2727  
[karla.hansen@kidder.com](mailto:karla.hansen@kidder.com)

[KIDDER.COM](http://KIDDER.COM)

This information supplied herein is from sources we deem reliable. It is provided without any representation, warranty, or guarantee, expressed or implied as to its accuracy. Prospective Buyer or Tenant should conduct an independent investigation and verification of all matters deemed to be material, including, but not limited to, statements of income and expenses. Consult your attorney, accountant, or other professional advisor.



FOR LEASE

# The York Building

2234 NW 24TH AVENUE, PORTLAND, OR



## Location Features

**THE** York Building is located on the edge of Northwest Portland's industrial district, walking distance to numerous shops and restaurants on NW 23rd/ Nob Hill

**LOCATION** provides immediate access to I-405 and downtown Portland

### RETAILERS IN WALKING DISTANCE

Industrial Café

Fillmore Trattoria

Dutch Bros

St. Honre Bakery

St. Jack

Life of Pie

Kenny & Zukes

McMenamins

New Seasons Market

Breakside Brewery

**ZACH FRANCIS**  
Executive Vice President  
503.221.2290  
zach.francis@kidder.com

**KARLA HANSEN**  
Vice President  
503.721.2727  
karla.hansen@kidder.com

[KIDDER.COM](http://KIDDER.COM)

This information supplied herein is from sources we deem reliable. It is provided without any representation, warranty, or guarantee, expressed or implied as to its accuracy. Prospective Buyer or Tenant should conduct an independent investigation and verification of all matters deemed to be material, including, but not limited to, statements of income and expenses. Consult your attorney, accountant, or other professional advisor.

88  
WALK SCORE

83  
BIKE SCORE

52  
TRANSIT SCORE

**km** Kidder Mathews