



6,398
Square Feet

OFFICE SPACE AVAILABLE FOR LEASE

2310 PARK AVENUE
DETROIT, MICHIGAN 48201

PROPERTY INFORMATION

- 6,398 Contiguous SF Available
- 54,728 Total SF
- Seven-Story Office Building
- Built in 1928; Renovated 2018
- Two (2) Elevators / One (1) Freight
- Ample Parking Available Adjacent to the Building
- Private Rooftop Terrace
- Signage Available

CONTACT US

DAN GALLAGHER

Associate
T: +1 313 209 4112
dan.gallagher@avisonyoung.com

LOCATION HIGHLIGHTS

- Steps away from Little Caesars Arena, Comerica Park and Ford Field in the up and coming District Detroit area. Plenty of food and entertainment within walking distance.

PROPERTY HIGHLIGHTS

- A historic Downtown Detroit gem. Designated parking included. 18,422 SF of contiguous space ideal for single-tenant. Views of southeast Detroit.

**AVISON
YOUNG**

AERIAL OVERVIEW



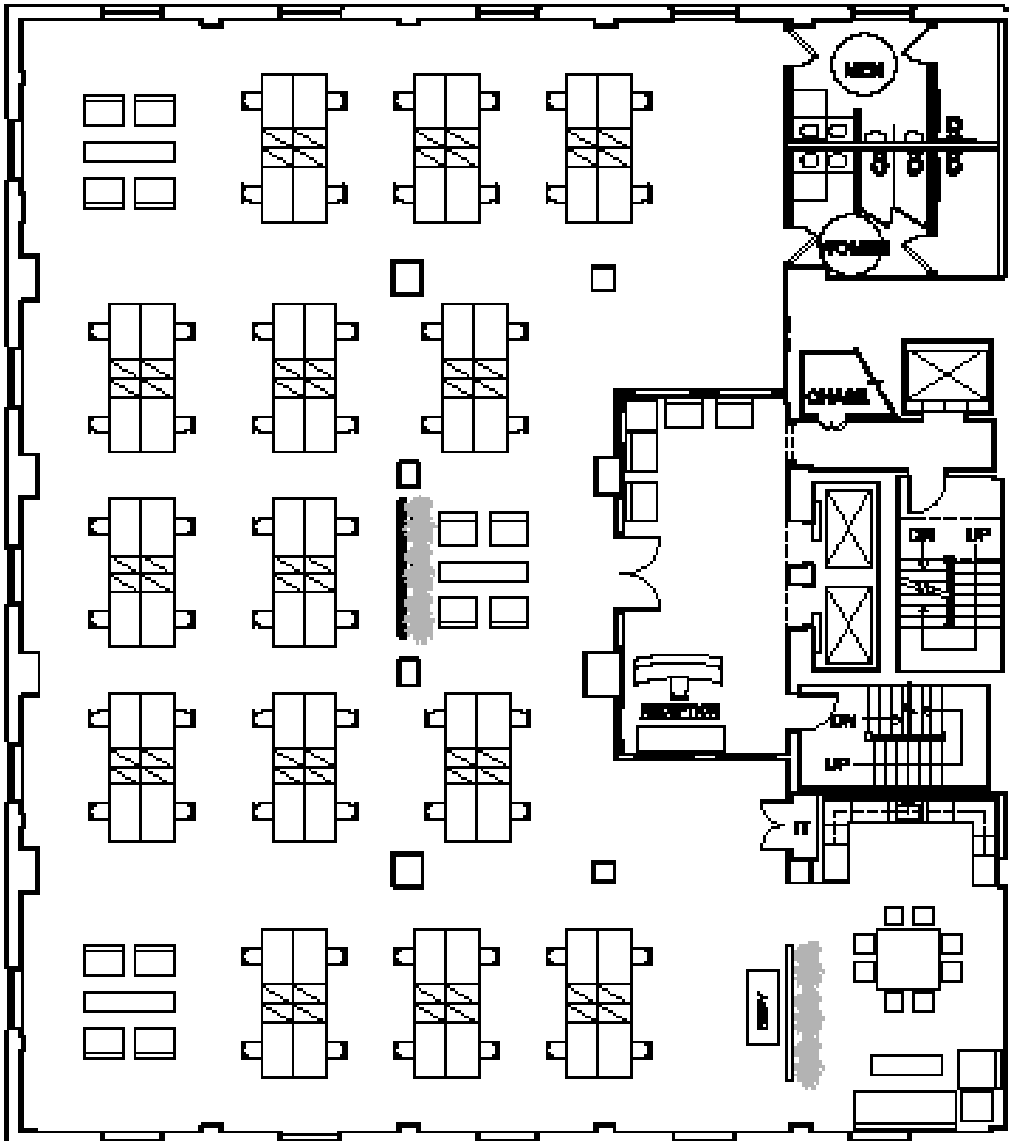
● PLACES OF INTEREST
● HOTEL ACCOMMODATIONS

- | | | | | | | | |
|---|--|---|--|--|---|---|---|
| 1 CAMPUS MARTIUS | 2 HUDSON SITE DEVELOPMENT | 3 MGM GRAND CASINO | 4 DTE HQ | 5 GRATIOT DEVELOPMENT SITE | 6 DETROIT ATHLETIC CLUB | | |
| 1 DISTRICT DETROIT HOTEL DEVELOPMENT #1 | 2 DISTRICT DETROIT HOTEL DEVELOPMENT #2 | 3 ALOFT HOTEL | 4 SIREN HOTEL | 5 SHINOLA HOTEL | 6 WESTIN BOOK CADILLAC | 7 FOUNDATION HOTEL | 8 CROWNE PLAZA |
| 9 DETROIT MARRIOTT AT THE RENAISSANCE CENTER | 10 COURTYARD MARRIOTT | 11 HILTON GARDEN INN | 12 GREEKTOWN CASINO HOTEL | 13 MGM GRAND HOTEL | | | |

PROPERTY FLOOR PLANS

FIFTH FLOOR

6,398 SF AVAILABLE



5TH FLOOR PLAN

SCALE 1/8"=1'-0"



GRAPHIC SCALE: FEET

CONTACT US

DAN GALLAGHER

Associate

T: +1 313 209 4112

dan.gallagher@avisonyoung.com

**AVISON
YOUNG**