

FOR LEASE

Central Park Six

6 Manhattan Square, Hampton, Virginia 23666



Features:

- 2nd floor can be subdivided (Example of how the 2nd floor can be subdivided on page 3).
- Located in a park like setting with great window lines, many with water views.
- Close to numerous dining and shopping options within 1.2 miles of Coliseum Central.
- 2nd floor space has 2 server rooms with supplemental HVAC, large break area and outstanding lobby exposure.
- Located 1 mile from Interstate 64.

Premises:

2nd Floor: 1,200 to 16,239 rentable square feet

Rental Rate:

\$16.50 per square foot, full service



DEMOGRAPHICS (2016)	1 Mile	3 Miles	5 Miles
Residential Population	6,700	64,070	199,294
Average HH Income	\$56,963	\$66,389	\$66,216
Number of Businesses	411	2,160	7,182
Employee Population	9,183	36,871	122,769

CONTACT:

ALEX STERN

(757) 640-9298

alexstern@harveylindsay.com

MATT LEFFLER, CCIM

(757) 640-9284

mattleffler@harveylindsay.com

HARVEY LINDSAY

COMMERCIAL REAL ESTATE

CLARK BALDWIN, CCIM

(757) 640-9290

clarkbaldwin@harveylindsay.com

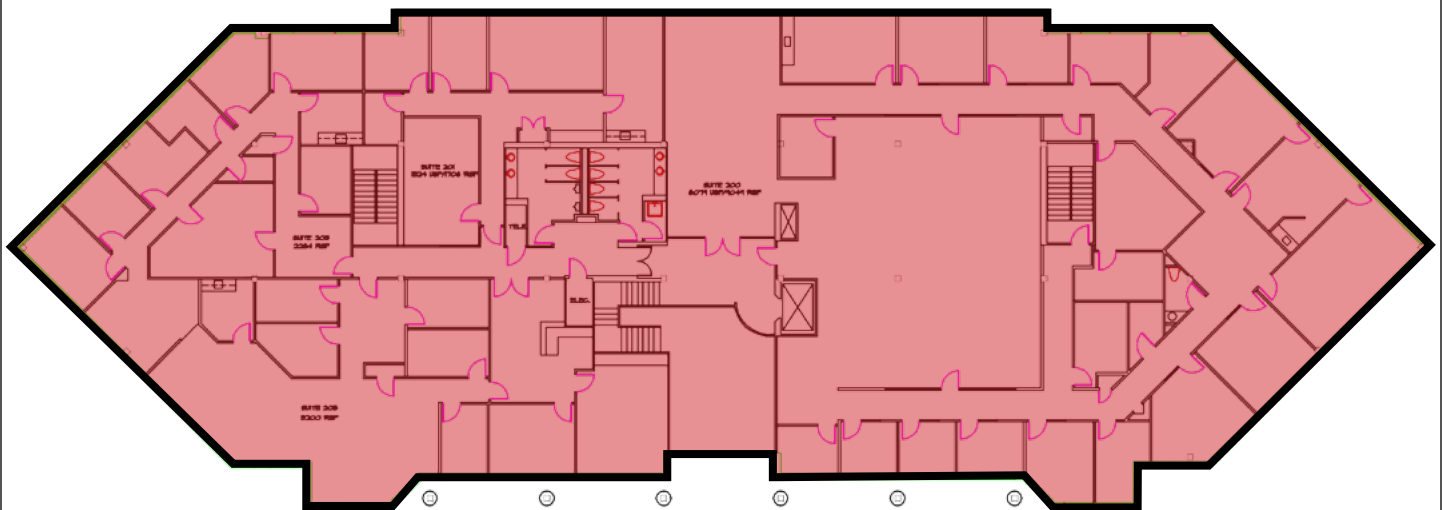
A Tradition of Forward Thinking

701 Town Center Drive ■ Suite 100 ■ Newport News, VA 23606 ■ 757.873.2020 ■ www.harveylindsay.com

FOR LEASE

Central Park Six

6 Manhattan Square, Hampton, Virginia 23666



Second Floor Plan - 16,239 square feet available

CONTACT:

ALEX STERN

(757) 640-9298

alexstern@harveylindsay.com

CLARK BALDWIN, CCIM

(757) 640-9290

clarkbaldwin@harveylindsay.com

MATT LEFFLER, CCIM

(757) 640-9284

mattleffler@harveylindsay.com

HARVEY LINDSAY

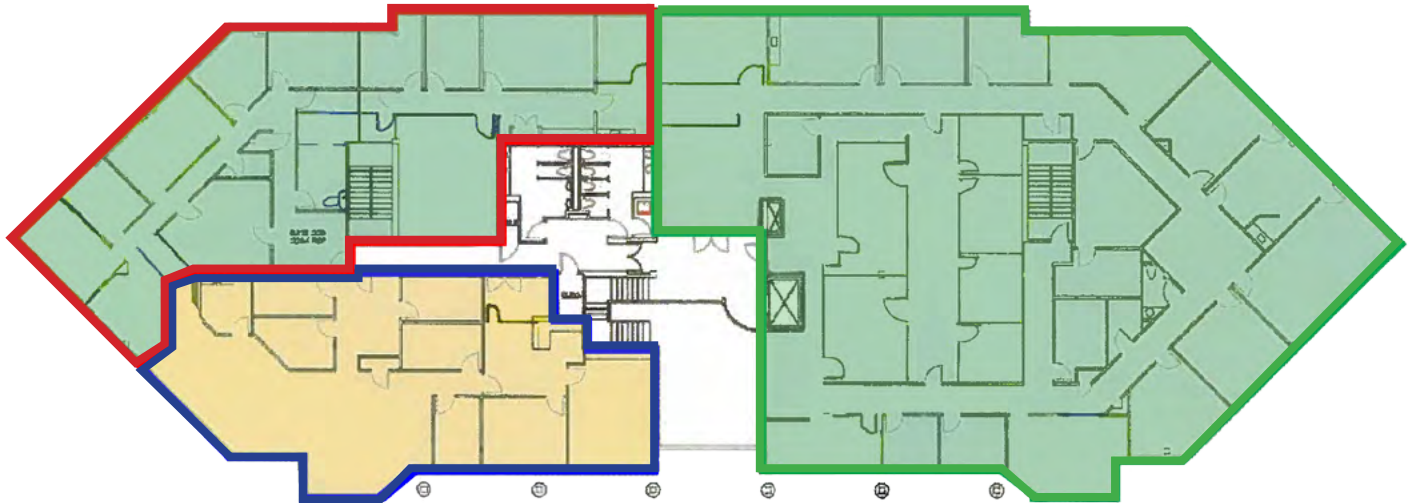
COMMERCIAL REAL ESTATE

The information contained herein has been obtained from sources believed to be reliable but is not warranted.
We cannot be responsible for errors, omissions, withdrawal, or prior lease or sale.

FOR DEMONSTRATION PURPOSES ONLY

Option B:
Approximately 4,000 SF

Option C:
Approximately 9,000 SF



Option A:
Approximately 3,200 SF

Second Floor
16,239 square feet
Central Park Six
Six Manhattan Square
Hampton, VA 23666

CONTACT:

ALEX STERN
(757) 640-9298
alexstern@harveylindsay.com

MATT LEFFLER, CCIM
(757) 640-9284
mattleffler@harveylindsay.com

CLARK BALDWIN, CCIM
(757) 640-9290
clarkbaldwin@harveylindsay.com

HARVEY LINDSAY
COMMERCIAL REAL ESTATE
A Tradition of Forward Thinking

The information contained herein has been obtained from sources believed to be reliable but is not warranted.
We cannot be responsible for errors, omissions, withdrawal, or prior lease or sale.