



Marina Square

1201 – 1299 Marina Blvd | San Leandro, California

NOW LEASING

<u>SPACE#</u>	<u>SF</u>	<u>RENT</u>	<u>NNN</u>
---------------	-----------	-------------	------------

Looking for food & restaurants

1299 Pac Sun	3,040	Inquire	Inquire
--------------	-------	---------	---------

Divisible: 839 - 2,193 sf

1235 Talbots	4,000	Inquire	Inquire
--------------	-------	---------	---------



For information, contact:

Thomas N. Klein, CA BRE #00840486
tklein@crosspointrealty.com

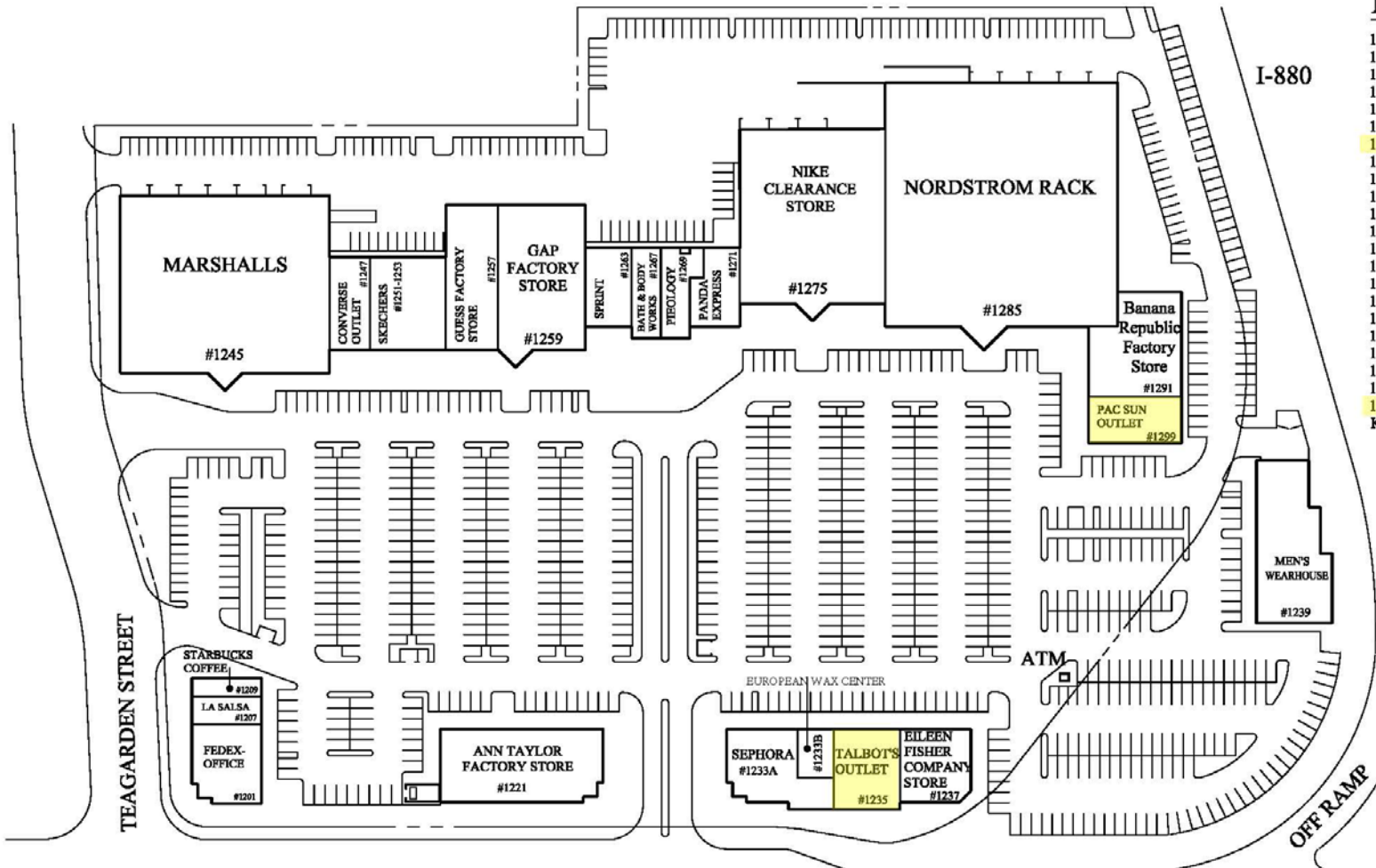
Phone: 415-288-6888
Fax: 415-288-6877

Crosspoint Realty Services, Inc.
20211 Patio Drive #145
Castro Valley, CA 94546
www.crosspointrealty.com



SITE PLAN

Contact: Thomas N. Klein (CA BRE#00840486), tklein@crosspointrealty.com Phone 415.288.6888



LEASING SUMMARY

1201	- FEDEX OFFICE	3,740 sf
1207	- LA SALSA HOLDING CO.	1,349 sf
1209	- STARBUCKS COFFEE	1,170 sf
1221	- ANN TAYLOR FACTORY STORE	9,295 sf
1233A	- SEPHORA	4,418 sf
1233B	- EUROPEAN WAX CENTER	1,344 sf
1235	- TALBOT'S OUTLET	4,000 sf
1237	- EILEEN FISHER COMPANY STORE	3,990 sf
1239	- MEN'S WEARHOUSE	7,820 sf
1245	- MARSHALLS	27,500 sf
1247	- CONVERSE OUTLET	3,000 sf
1251,3	- SKECHERS	5,000 sf
1257	- GUESS FACTORY STORE	5,000 sf
1259	- GAP FACTORY STORE	10,000 sf
1263	- SPRINT	2,509 sf
1267	- BATH & BODY WORKS	1,900 sf
1269	- PIBIOLOGY	2,172 sf
1271	- PANDA EXPRESS	2,460 sf
1275	- NIKE CLEARANCE STORE	18,937 sf
1285	- NORDSTROM RACK	42,000 sf
1291	- BANANA REPUBLIC	6,610 sf
1299	- PAC SUN OUTLET	3,040 sf
	KIOSK - BANK OF AMERICA	ATM

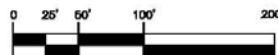
TOTAL 167,254 SQ.FT.

TOTAL PARKING SPACES = 926

PARKING RATIO = 5.54 PARKING SPACES/1,000 SF



MARINA SQUARE
SHOPPING CENTER 1/02/20
San Leandro, California



This site plan is intended only to show the general layout of the property or a part thereof. Landlord reserves the right to alter, vary, add to or omit in whole or in part any structures, and/or improvements, and / or common areas and / or land area shown on this plan. All measurements and distances are approximate. This plan is not to be scaled.



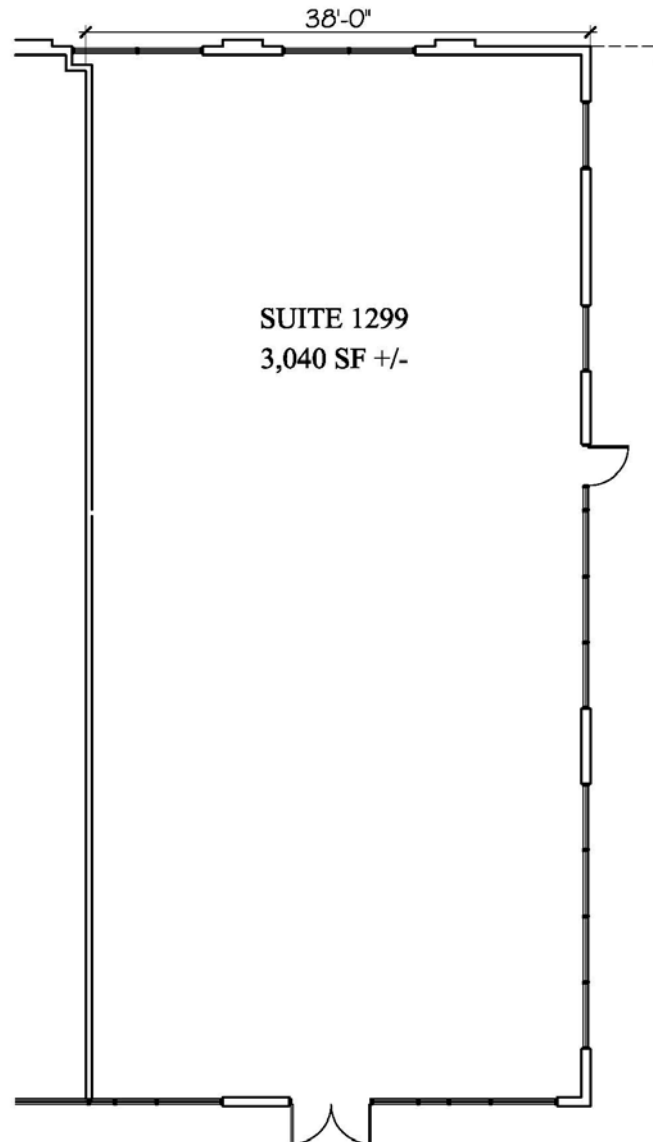
Marina Square

1201 – 1299 Marina Blvd | San Leandro, California

Space 1299

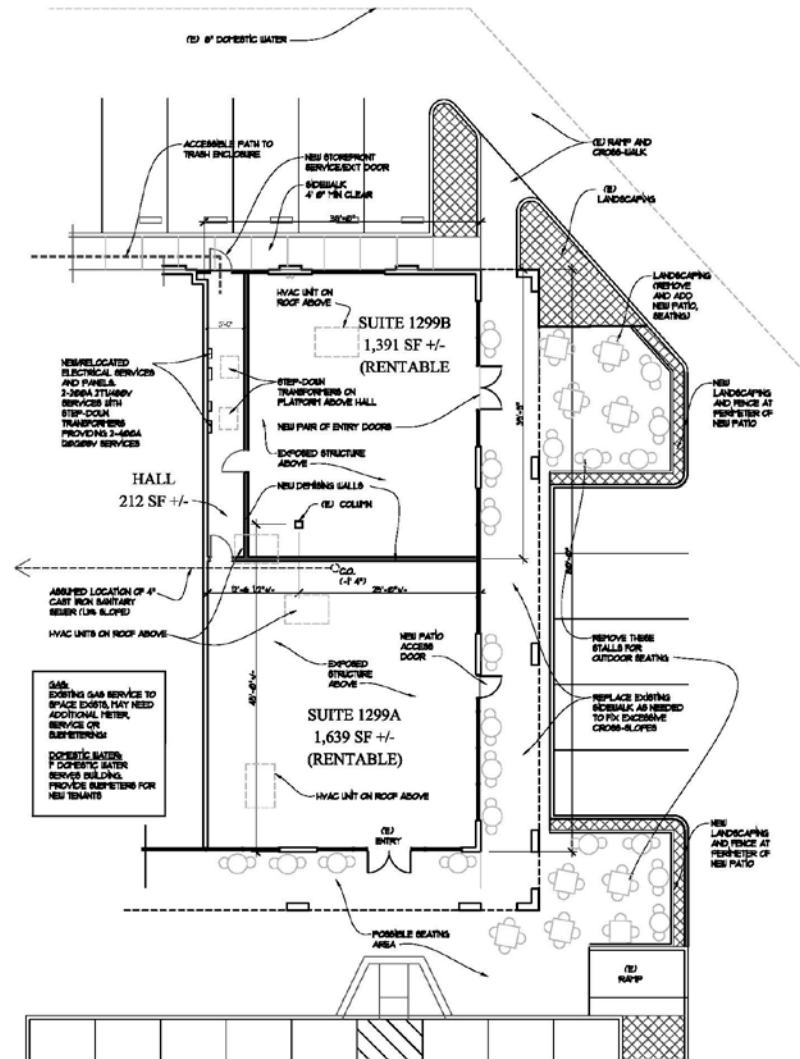
Contact: Thomas N. Klein (CA BRE#00840486), tklein@crosspointrealty.com Phone 415.288.6888

Current Pac Sun Space



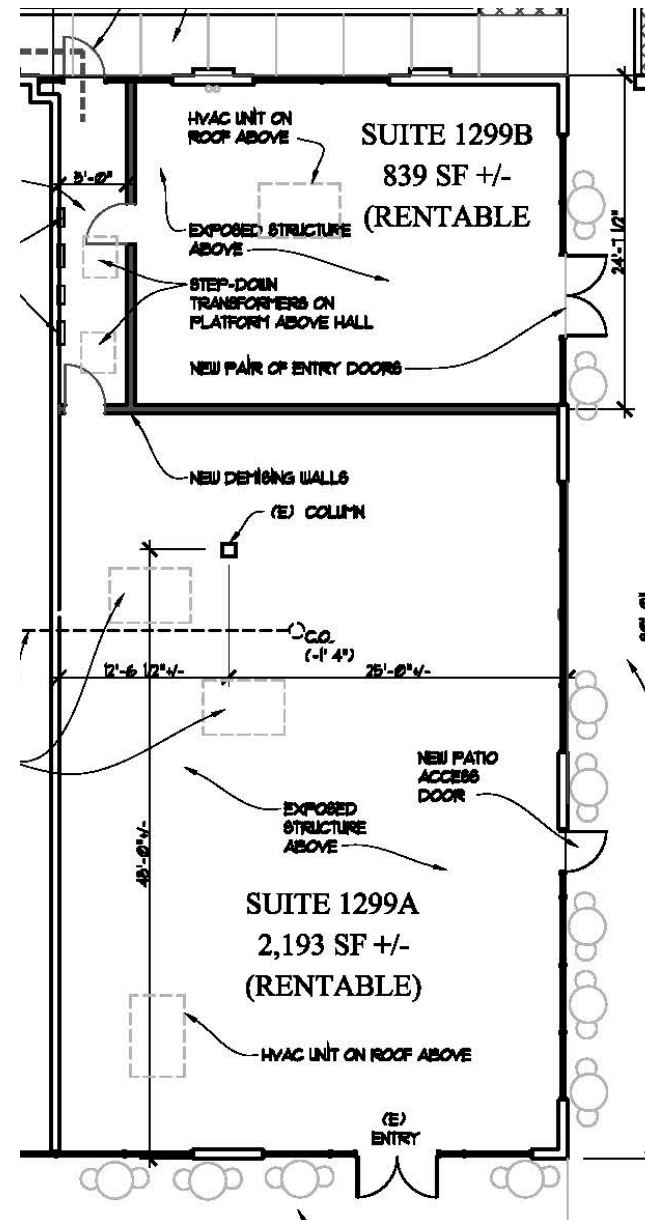
Space 1299; Demising Option A

Contact: Thomas N. Klein (CA BRE#00840486), tklein@crosspointrealty.com Phone 415.288.6888



SUITES 1299A, 1299B

MARINA SQUARE SHOPPING CENTER



MARKET AREA

Marina Square Tenants Include:

- | | |
|--------------------------|-------------------------------|
| Nordstrom Rack | Skechers |
| Ann Taylor Factory Store | Sephora |
| Talbots Outlet | Guess Outlet |
| Marshall's | Sprint PCS |
| GAP Outlet | Bath & Body Works |
| Eileen Fisher Outlet | Converse |
| Men's Wearhouse | Pac Sun |
| La Salsa | Banana Republic Factory Store |
| Starbucks | FedEx Kinkos |
| Nike Clearance Store | Pieology |
| | Panda Express |



For information, contact:

Thomas N. Klein, CA BRE #00840486
tklein@crosspointrealty.com

Phone: 415-288-6888
Fax: 415-288-6877

Crosspoint Realty Services, Inc.
20211 Patio Drive #145
Castro Valley, CA 94546
www.crosspointrealty.com