



FOR LEASE

Westlink Business Center

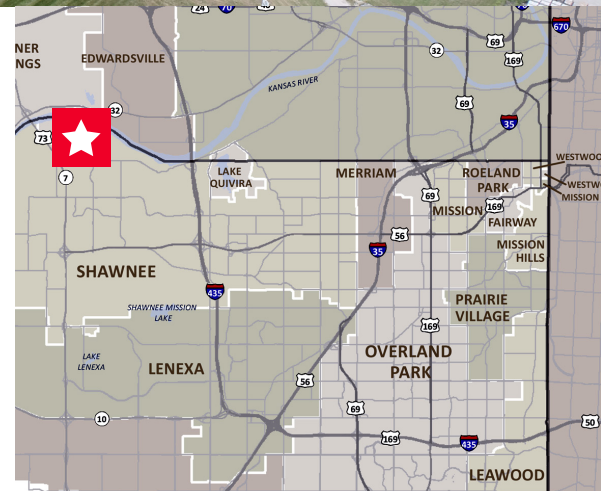
Building 3 - 20,000 SF

4100 Powell Drive / Shawnee, KS



Property Highlights

- 100% tax abatement through 2024
- Newly built, energy-efficient building with 28' clear heights, ESFR sprinkler system, and dock and drive-in loading option available in 20,000 square feet
- Great location for local, regional and national distribution with convenient access to Highway K-7, Interstate 435, and Interstate 70
- Master planned business park located in the heart of Shawnee, Kansas at Highway K-7 and 43rd Street
- Significant state and local economic incentive programs available
- Ideal space for Ecommerce Business
- \$4.95 PSF NNN rate includes \$2.00 PSF T.I. allowance



Whitney Kerr, Jr., SIOR, CCIM
Managing Director
+1 816 412 0250
whitney.kerrjr@cushwake.com

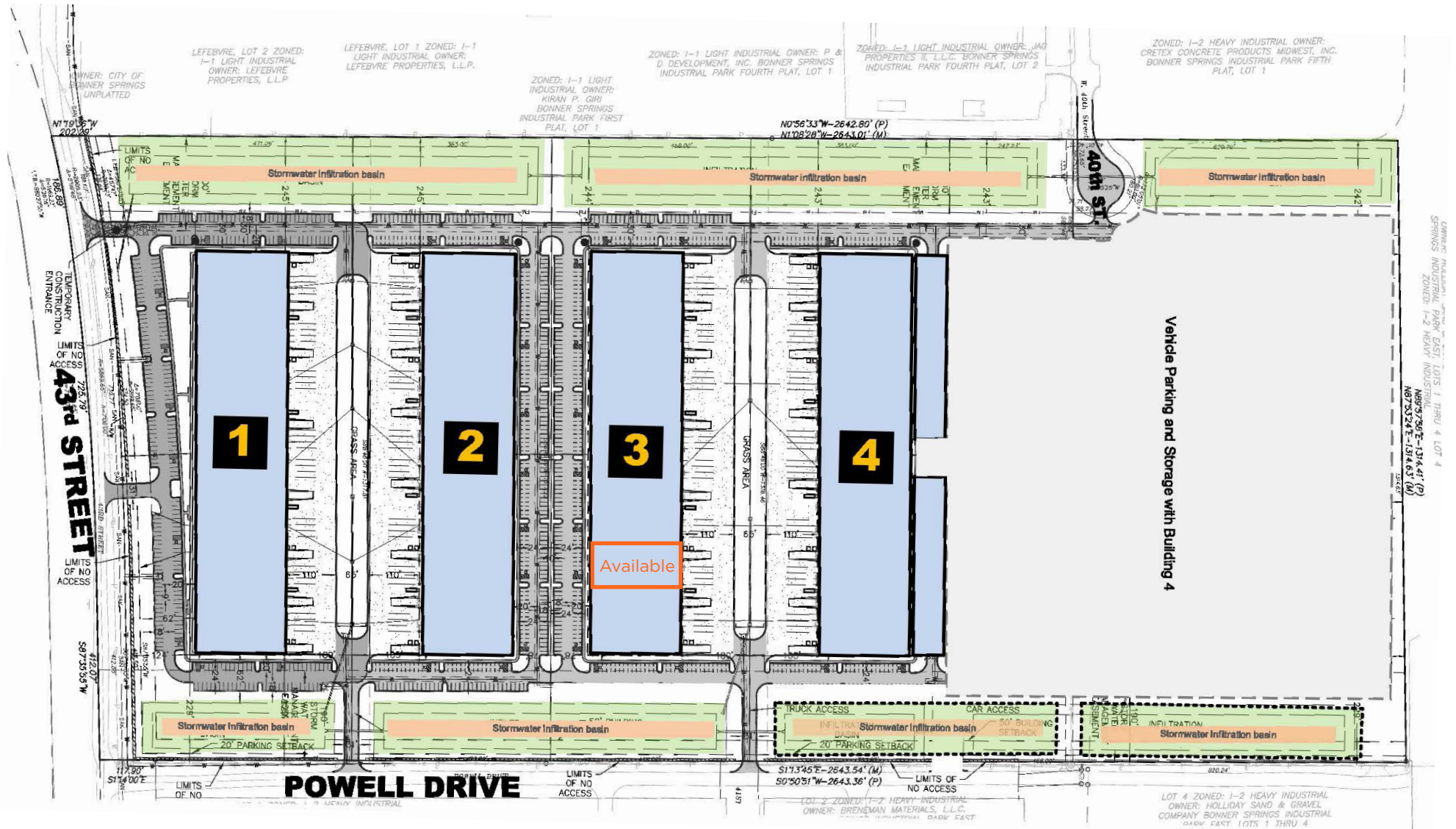
Rob Holland, CCIM
Senior Director
+1 816 412 0214
rob.holland@cushwake.com

4600 Madison Avenue, Suite 800
Kansas City, MO 64112
Main +1 816 221 2200
Fax +1 816 842 2798
cushmanwakefield.com

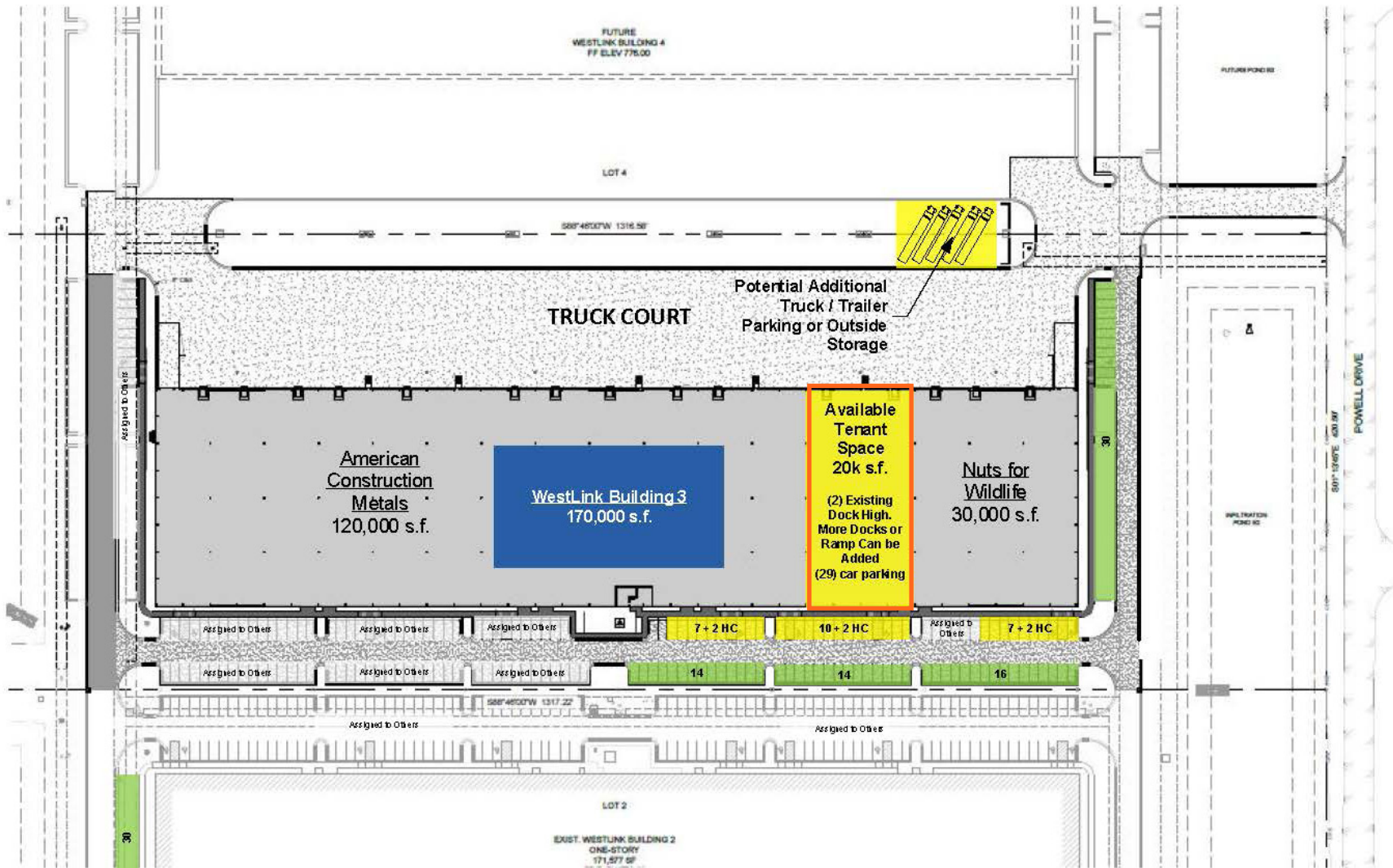


FOR LEASE
Westlink Business Center
 Building 3 - 20,000 SF Available
 4100 Powell Drive / Shawnee, KS

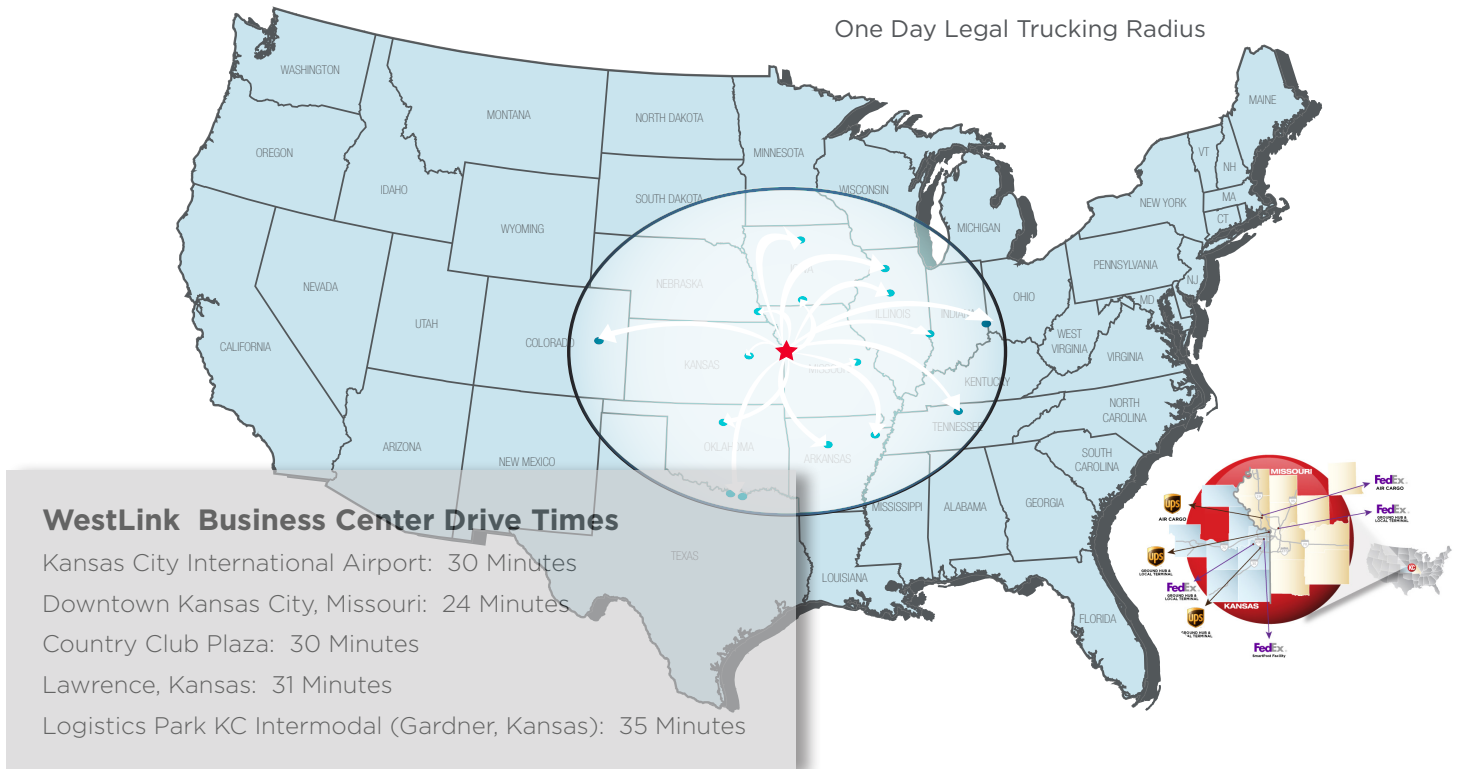
Building Site Plan



Floor Plan



Location, Location, Location!



Greater Kansas City Area

- The Kansas City area consistently ranks among the Top U.S. Cities For Supporting Small Businesses, according to Entrepreneur magazine. Most recently, Kansas City was named the No. 1 place to start and grow a business in the Midwest and ranked No. 11 nationally.
- Kansas City's Cost-Of-Living measures below the U.S. average, as reported by ACCRA. Among large U.S. cities, this performance makes Kansas City among the most affordable.
- Kansas City ranks as the nation's Eighth-Strongest Metropolitan Area in terms of its economy according to a 20-year study done by Policom Corporation.
- Kansas City made Frommer's list of Top Destinations 2012 alongside cities like Beirut, Lebanon, and the Caribbean island of Curacao. Frommer's focuses on Kansas City's cultural diversity, with emphasis on the evolving performing arts scene and the wide variety of entertainment.

Whitney Kerr, Jr., SIOR, CCIM
 Managing Director
 +1 816 412 0250
 whitney.kerrjr@cushwake.com

Rob Holland, CCIM
 Senior Director
 +1 816 412 0214
 rob.holland@cushwake.com

4600 Madison Avenue, Suite 800
 Kansas City, MO 64112
 Main +1 816 221 2200
 Fax +1 816 842 2798
cushmanwakefield.com