



# Port Road

## New Hope, Tennessee

Land for Sale | +/- 61.51 acres Available

### Property Overview

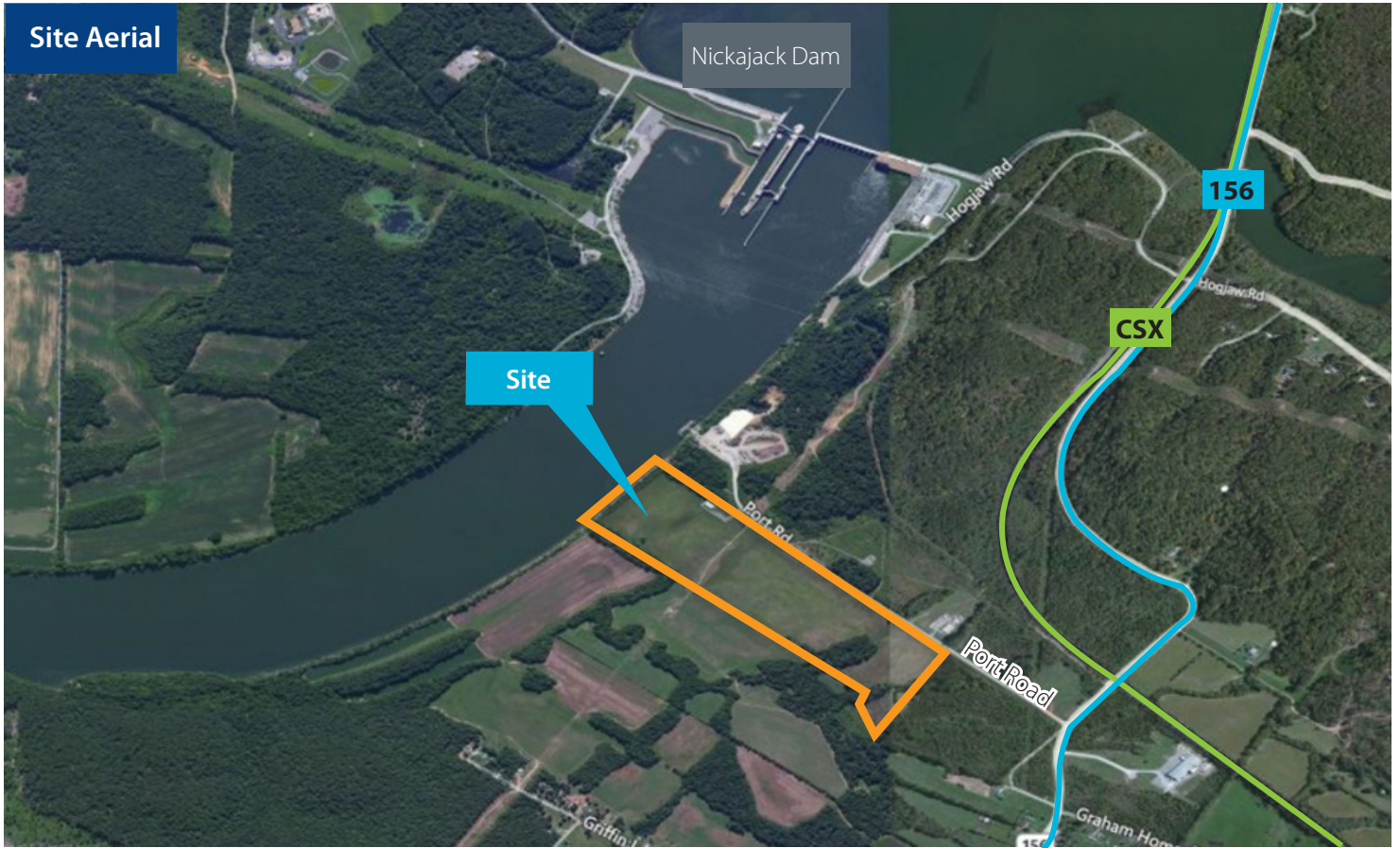
- 750 feet of riverfront frontage
- Quick access to I-24 via State Route 156
- Zoned Agricultural with flat, gentle topo
- Access to CSX mainline skirting property
- Access to Nickajack and Guntersville Lakes
- 3,200 sf docking shed on site

**New Price: \$750,000**

### Zoned Agricultural with flat, gentle topo









+/- 61.51 acres



A view of the shoreline



3,200 sf docking shed on site





