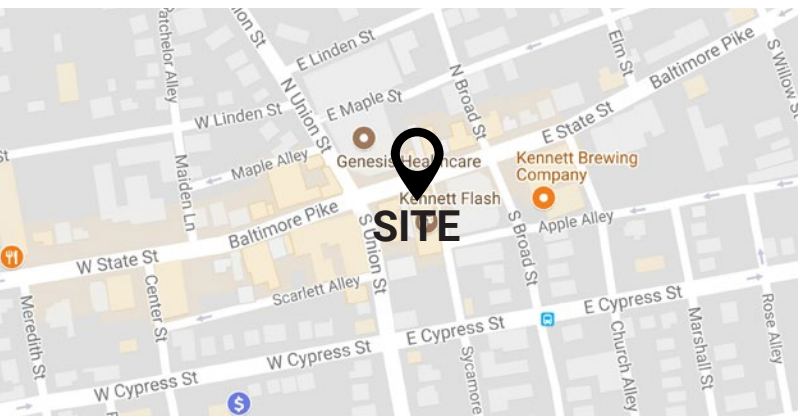


**± 5,500 RETAIL SPACE AVAILABLE**  
**110 E STATE ST, KENNETT SQUARE, PA 19348**

**FOR LEASE:**  
**NNN - NEGOTIABLE**

## PROPERTY FEATURES

- ✓ ± 5,500 SF of space plus outdoor seating and lower level commissary space
- ✓ Walk in coolers and freezers, large hood, and much of the kitchen equipment is still in place
- ✓ The building is being renovated, and the available space will brand new
- ✓ Join Grain, Hearth, The Creamery, Kennett Brewing Company, Victory Brewpub, and other fine eating establishments in one of Chester County's fastest growing areas.
- ✓ Opportunity to join the burgeoning restaurant scene in historic Kennett Square



## CONTACT US

**JAMES PINCKNEY**

Phone: 610.359.1100

Cell: 610.453.2569

Email: [jpinkney@zmcre.com](mailto:jpinkney@zmcre.com)

**TESS SCOTT**

Phone: 610.359.1100

Cell: 610.401.3453

Email: [tscott@zmcre.com](mailto:tscott@zmcre.com)

1306 Wilmington Pike, Suite A-2

West Chester, PA 19382

610.359.1100

[www.zmcre.com](http://www.zmcre.com)

  
**ZOMMICK MCMAHON**  
COMMERCIAL REAL ESTATE



# KENNETT SQUARE SITE LOCATION AERIAL - 110 E STATE STREET



**SITE**  
± 5,500 SF  
FOR LEASE

LA  
VERONA

FRANKLIN  
CENTER

82

  
**ZOMMICK MCMAHON**  
COMMERCIAL REAL ESTATE

## CONTACT US

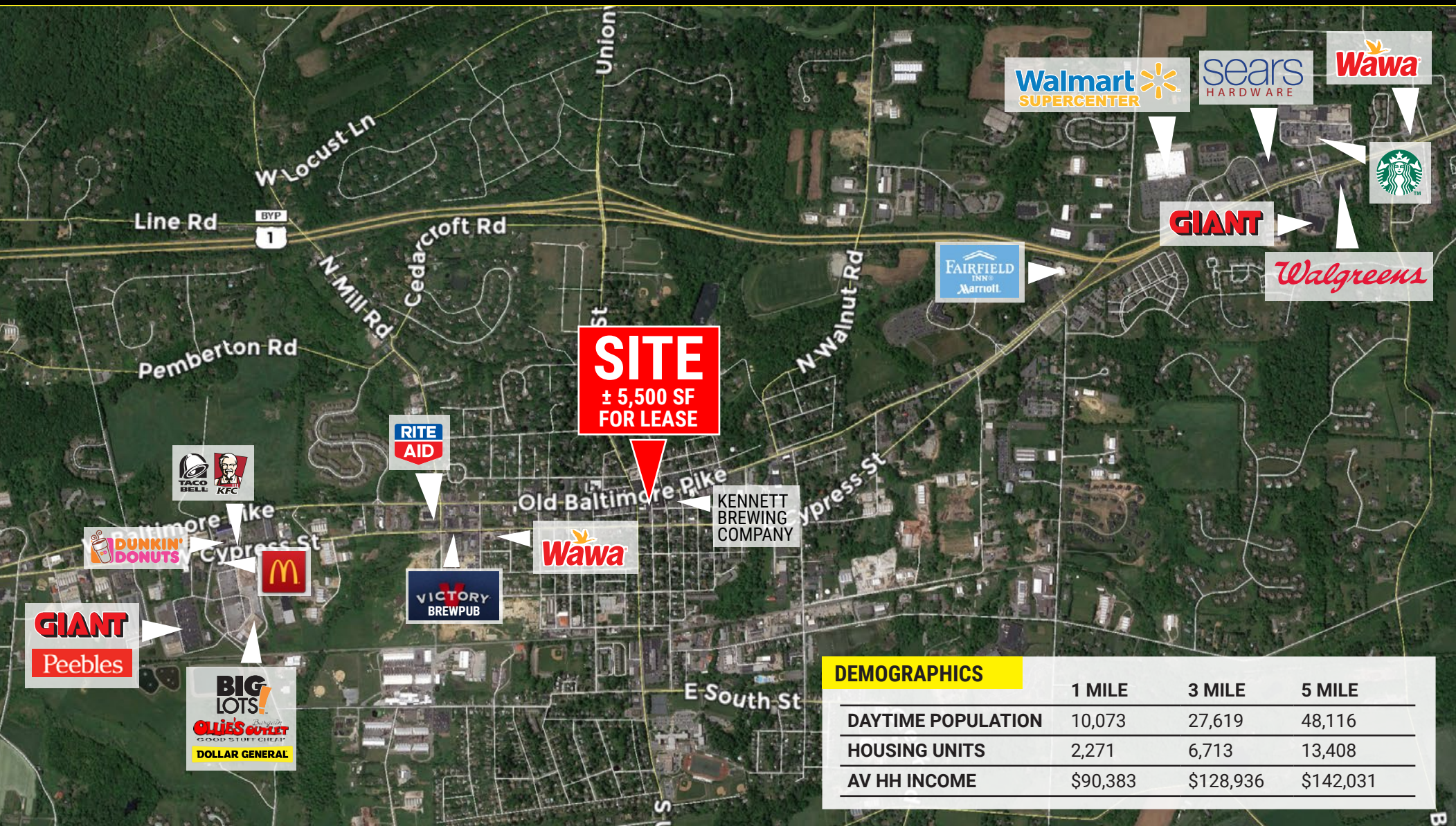
**JAMES PINCKNEY**  
Phone: 610.359.1100  
Cell: 610.453.2569  
Email: [jpinckney@zmcre.com](mailto:jpinckney@zmcre.com)

**TESS SCOTT**  
Phone: 610.359.1100  
Cell: 610.401.3453  
Email: [tscott@zmcre.com](mailto:tscott@zmcre.com)

1306 Wilmington Pike, Suite A-2  
West Chester, PA 19382  
610.359.1100  
[www.zmcre.com](http://www.zmcre.com)



# KENNETT SQUARE MARKET AERIAL - 110 E STATE STREET



DEMOGRAPHICS	1 MILE	3 MILE	5 MILE
DAYTIME POPULATION	10,073	27,619	48,116
HOUSING UNITS	2,271	6,713	13,408
AV HH INCOME	\$90,383	\$128,936	\$142,031



## CONTACT US

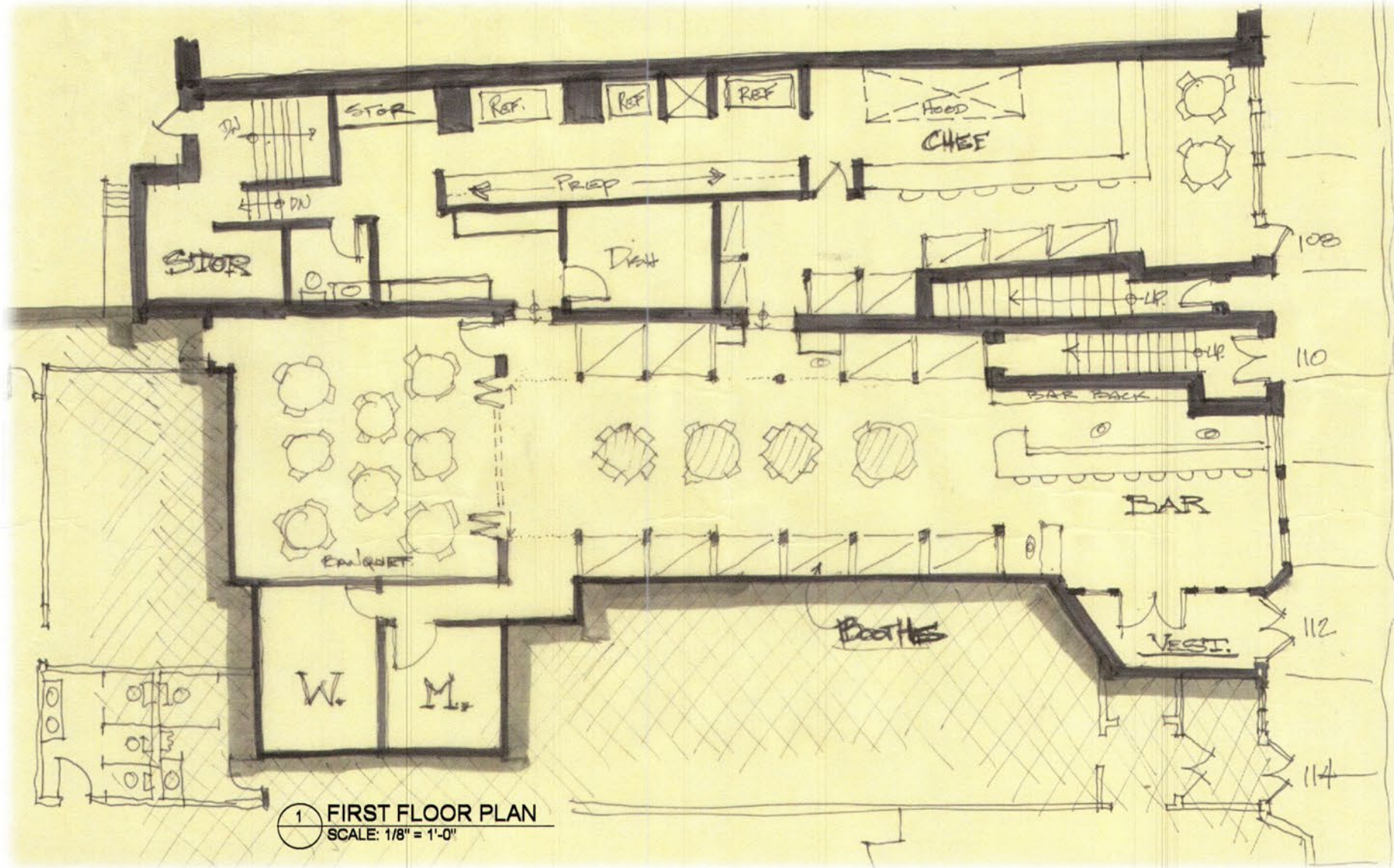
**JAMES PINCKNEY**  
Phone: 610.359.1100  
Cell: 610.453.2569  
Email: jpinckney@zmcre.com

**TESS SCOTT**  
Phone: 610.359.1100  
Cell: 610.401.3453  
Email: tscott@zmcre.com

1306 Wilmington Pike, Suite A-2  
West Chester, PA 19382  
610.359.1100  
[www.zmcre.com](http://www.zmcre.com)



# KENNETT SQUARE FLOOR PLAN CONCEPT - 110 E STATE STREET



## CONTACT US

**JAMES PINCKNEY**

Phone: 610.359.1100

Cell: 610.453.2569

Email: [jpinckney@zmcre.com](mailto:jpinckney@zmcre.com)

**TESS SCOTT**

Phone: 610.359.1100

Cell: 610.401.3453

Email: [tscott@zmcre.com](mailto:tscott@zmcre.com)

1306 Wilmington Pike, Suite A-2

West Chester, PA 19382

610.359.1100

[www.zmcre.com](http://www.zmcre.com)

# ABOUT ZOMMICK McMAHON COMMERCIAL REAL ESTATE

Zommick McMahon Commercial Real Estate, Inc. has been a Metro Philadelphia Area staple since its inception in 1949. The Company was founded by Joseph Zommick, and continues today with Ryan McMahon and his highly experienced staff, whom are all results-oriented professionals.

## SOME OF OUR SATISFIED CLIENTS:



## CONTACT US

**JAMES PINCKNEY**

Phone: 610.359.1100

Cell: 610.453.2569

Email: [jpinckney@zmcre.com](mailto:jpinckney@zmcre.com)

**TESS SCOTT**

Phone: 610.359.1100

Cell: 610.401.3453

Email: [tscott@zmcre.com](mailto:tscott@zmcre.com)

1306 Wilmington Pike, Suite A-2

West Chester, PA 19382

610.359.1100

[www.zmcre.com](http://www.zmcre.com)