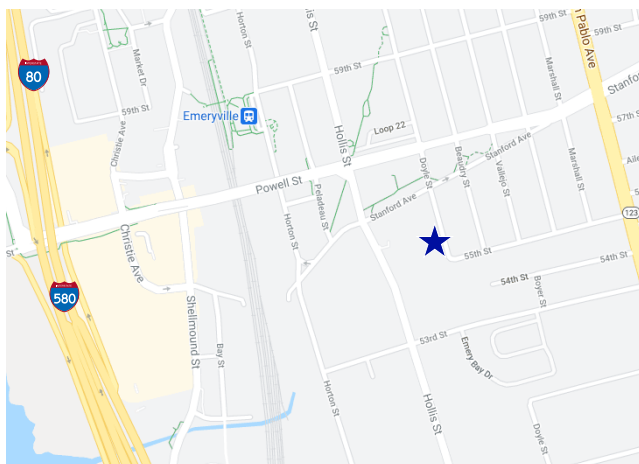




Creative Space For Lease

**5515 DOYLE STREET, SUITE 6
EMERYVILLE, CA**



Area

±2,600 square feet

Rental Rate

\$1.15 NNN (NNN estimated at \$0.45/SF)

Possession

Available Immediately

Property Highlights

- Open Layout
- Two (2) Off Street Parking Spaces
- Next to Doyle Street Cafe
- Carpeted Floors
- High Ceilings/Ceiling Fan/HVAC/Skylights
- Large Operable Windows Provide Natural Light
- Common Area Restroom, Sink, and Grade-Level Roll-Up Door

For information, please contact:

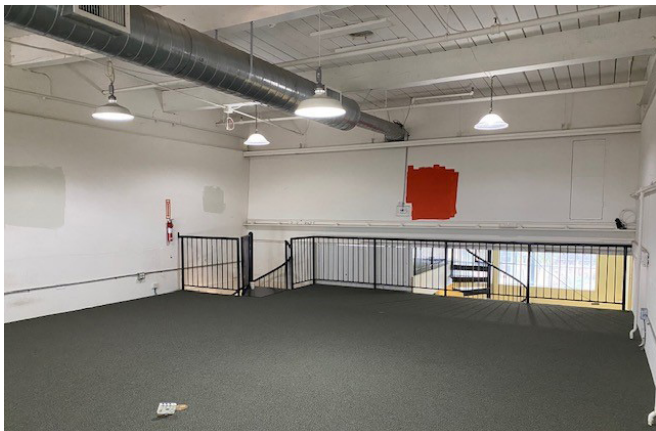
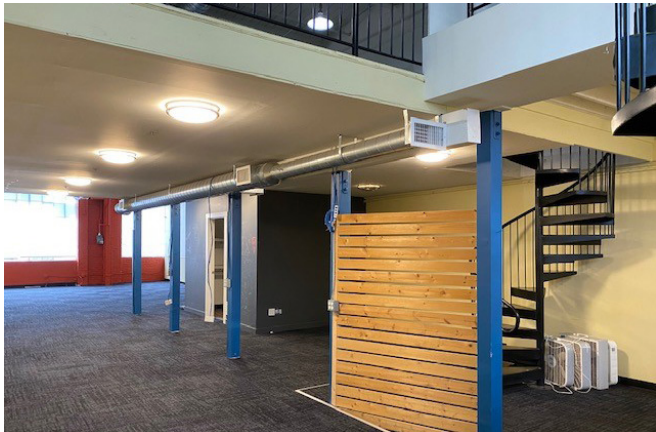
Jeff Lahr
Managing Director
t 510-923-6208
jlahr@ngkf.com
CA RE Lic # 01296493

Jim Clark
Senior Managing Director
t 510-923-6247
jim.clark@ngkf.com
CA RE Lic # 00926308

nmrk.com

NEWMARK

The distributor of this communication is performing acts for which a real estate license is required. The information contained herein has been obtained from sources deemed reliable but has not been verified and no guarantee, warranty or representation, either express or implied, is made with respect to such information. Terms of sale or lease and availability are subject to change or withdrawal without notice.



For information, please contact:

Jeff Lahr
 Managing Director
 t 510-923-6208
 jlahr@ngkf.com
 CA RE Lic # 01296493

Jim Clark
 Senior Managing Director
 t 510-923-6247
 jim.clark@ngkf.com
 CA RE Lic # 00926308

nmrk.com

NEWMARK

The distributor of this communication is performing acts for which a real estate license is required. The information contained herein has been obtained from sources deemed reliable but has not been verified and no guarantee, warranty or representation, either express or implied, is made with respect to such information. Terms of sale or lease and availability are subject to change or withdrawal without notice.