

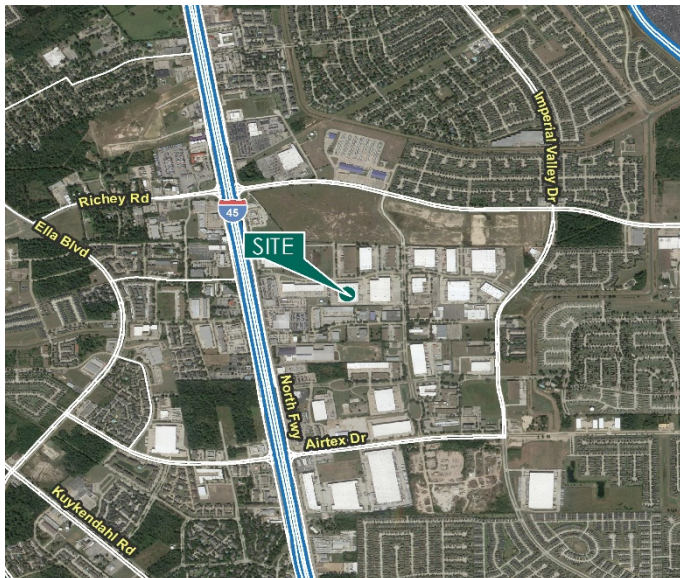
# 46,035 SF

## Industrial Space For Lease



## Prologis Northpark 11

330 Northpark Central Drive, Suite 100  
Houston, TX 77073 USA



### LOCATION

- Conveniently located along I-45 North between Airtex Drive and Richey Road
- Easy access to I-45, Beltway 8 and the Hardy Toll Road
- Part of the master planned Prologis Park Northpark
- Unincorporated Harris County
- Double Freeport tax exemption

### FACILITY

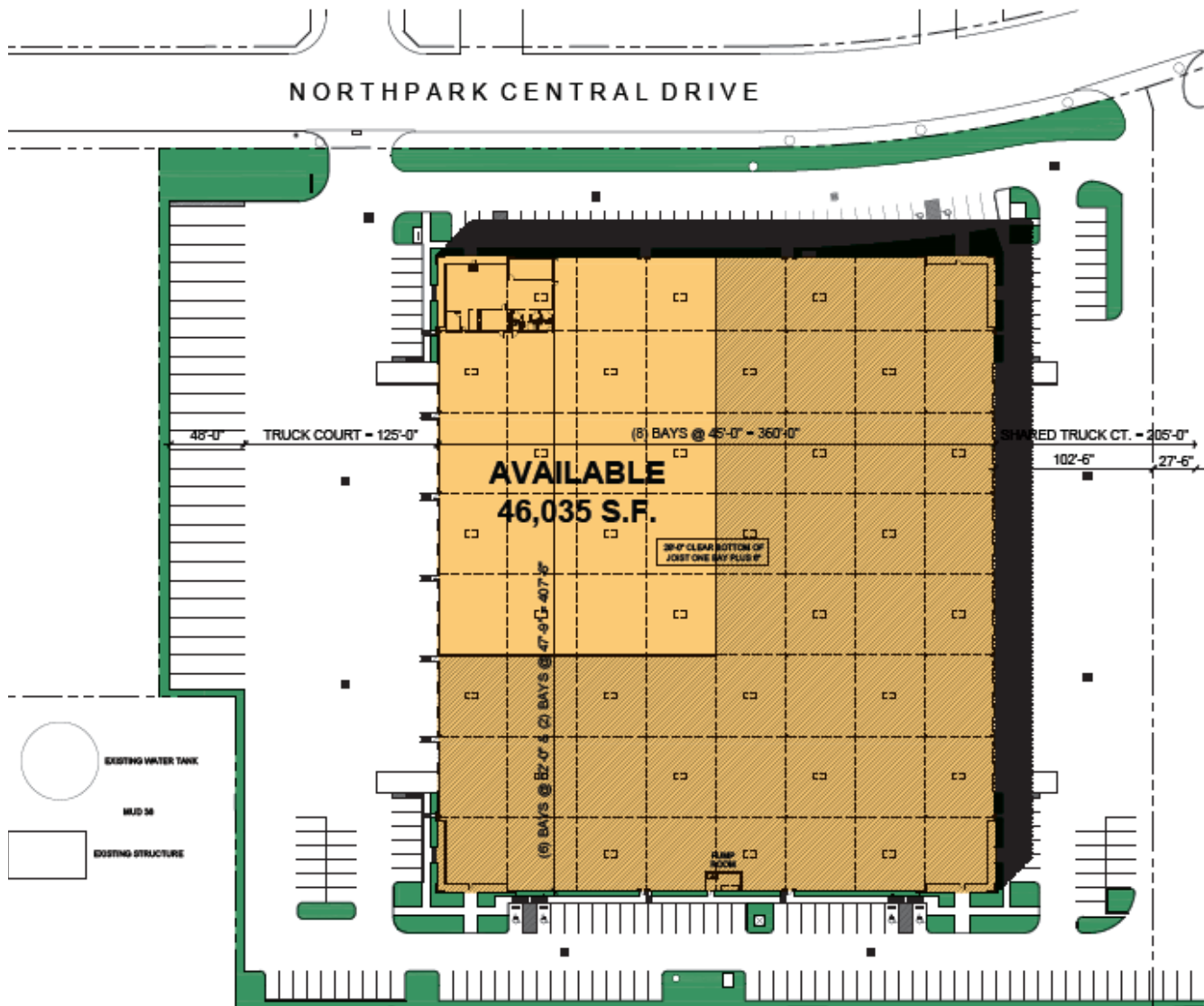
- 46,035 SF available
- 3,196 SF office
- 28' clear height
- 10 dock doors / 1 ramp
- 45' x 52' column spacing

### ADVANTAGES AND AMENITIES

- Trailer parking available
- ESFR sprinkler system

# 46,035 SF

## Industrial Space For Lease



**Cushman & Wakefield**  
Jason Dillee  
jason.dillee@cushwake.com  
ph +1 713 345 1432  
cell +1 832 741 0733  
1330 Post Oak Blvd., Suite 2700  
Houston, TX 77056 USA

**Cushman & Wakefield**  
Nathan Wynne  
nathan.wynne@cushwake.com  
ph +1 713 345 1431  
cell +1 713 206 3881  
1330 Post Oak Blvd., Suite 2700  
Houston, TX 77056 USA

**Prologis**  
Alicia Pillows  
any@prologis.com  
ph +1 713 613 6930  
cell +1 713 409 1306  
1296 North Post Oak Road  
Houston, TX 77055 USA