

BLACK CANYON

COMMERCE PARK

2101 W PEORIA AVE | PHOENIX, AZ



CBRE

± 17,066 SF CONTIGUOUS AVAILABLE

LOCATION FEATURES



EASY ACCESS TO I-17
via full-diamond interchange at Peoria Avenue



ADJACENT TO THREE
Valley Metro stops

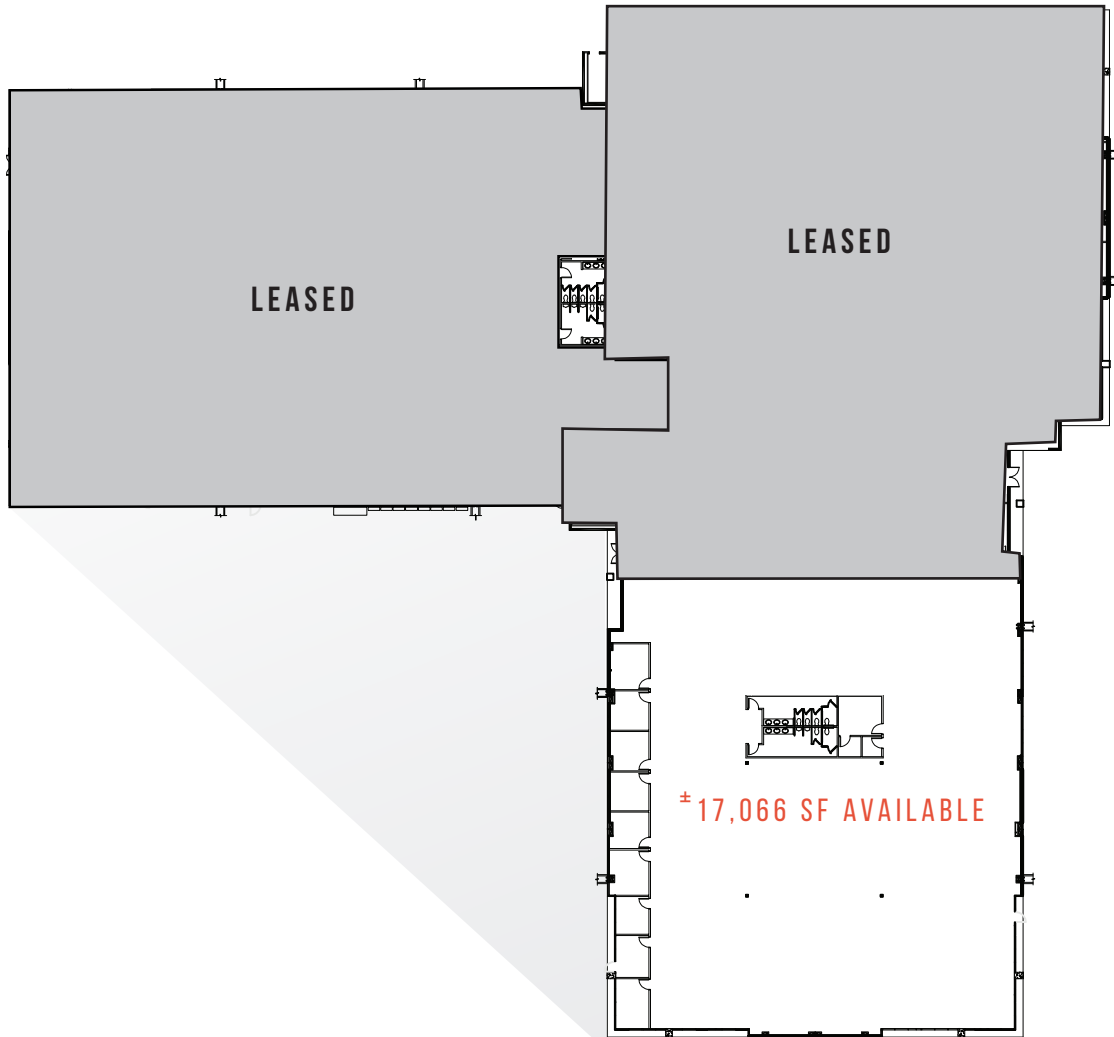


PROXIMITY TO ABUNDANT
labor market

NEARBY AMENITIES

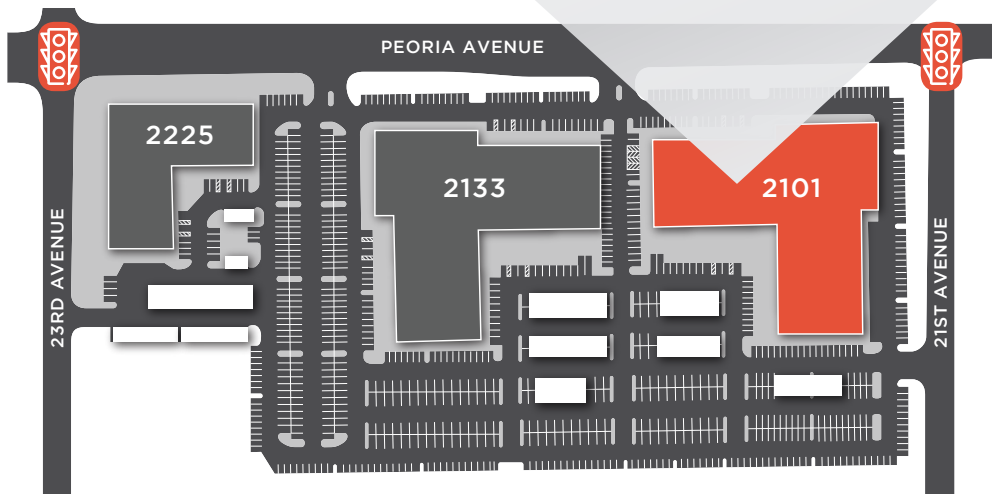


OVER 3 MILLION SF
of retail amenities within
a 3-mile radius



BUILDING FEATURES

- Single story, exterior loaded office building
- ±17,066 SF available
- Wide open, call center layout
- 7 per 1,000 parking available





FOR MORE INFORMATION PLEASE CONTACT

ASHLEY BROOKS
Senior Vice President
602 735 1758
ashley.brooks@cbre.com

JASMINA SUBASIC
Client Services Specialist
602.735.5262
jasmina.subasic@cbre.com



© 2018 CBRE, Inc. All rights reserved. This information has been obtained from sources believed reliable, but has not been verified for accuracy or completeness. You should conduct a careful, independent investigation of the property and verify all information. Any reliance on this information is solely at your own risk. CBRE and the CBRE logo are service marks of CBRE, Inc. All other marks displayed on this document are the property of their respective owners. Photos herein are the property of their respective owners. Use of these images without the express written consent of the owner is prohibited. PMStudio_February2020