

FOR SALE - WAREHOUSE/OFFICE/ LAND

2434 E. NORTH AVENUE, BALTIMORE, MARYLAND 21213

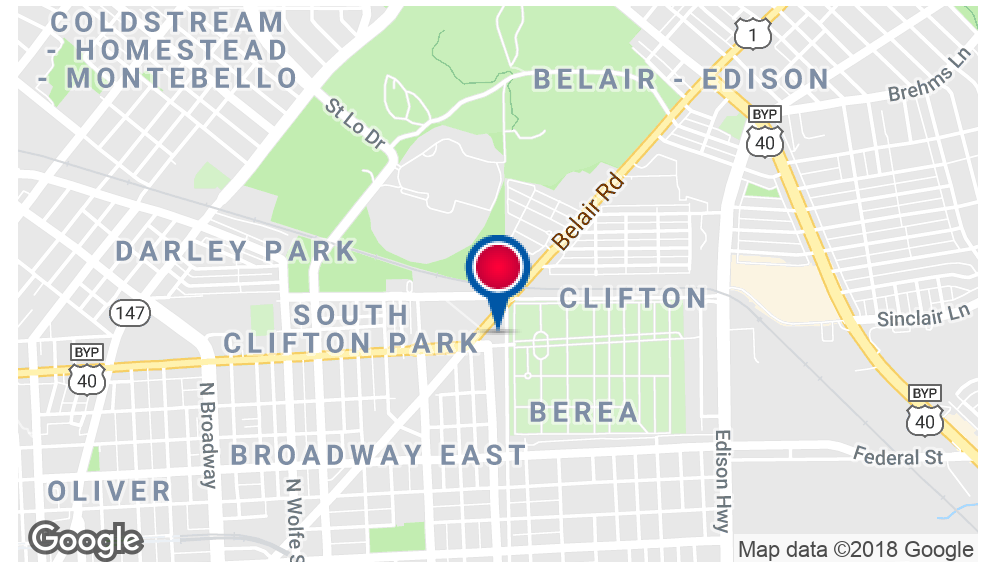


Executive Summary



PROPERTY HIGHLIGHTS

- 6,100 sq ft - one story warehouse (divisible) on 11,377 sq ft (.26 acres)
- Adjacent land parcels of 7,821 sq ft (.18 acres)
- Warehouse has 4 drive-in bays
- 436 sq ft of office space
- Clear ceiling height of 11-14'
- Fenced yard with plenty of storage
- Warehouse zoned: B-3-2 (commercial)
- Adjacent land zoned: B-3-2 (commercial) or Residential
- Excellent use for a contractor, automotive or distributor



Henry Kornblatt

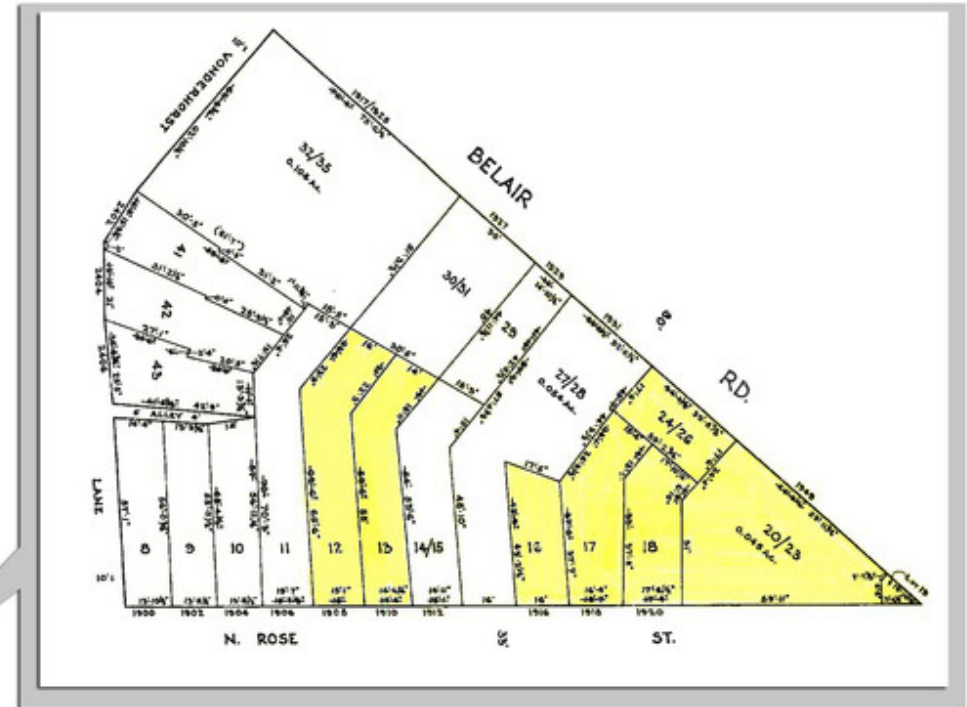
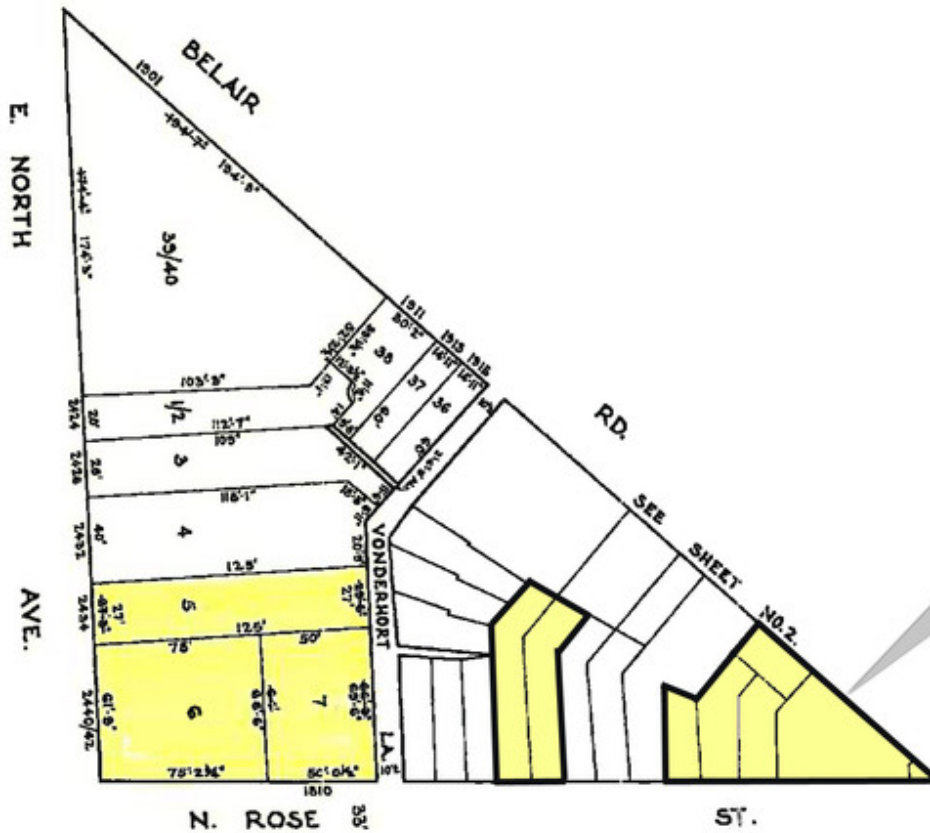
443.921.9312

hkornblatt@troutdaniel.com

The information contained in this marketing brochure has been obtained from sources we believe to be reliable; however, Trout Daniel & Associates LLC has not verified, and will not verify any of the information contained herein, nor has Trout Daniel & Associates LLC conducted any investigation regarding these matters and makes no warranty or representation whatsoever regarding the accuracy or completeness of the information provided. An agent indicated by an asterisk (*) has a direct or indirect ownership interest in this property.

FOR SALE - WAREHOUSE/OFFICE/ LAND

2434 E. NORTH AVENUE, BALTIMORE, MARYLAND 21213



Henry Kornblatt
443.921.9312
hkornblatt@troutdaniel.com

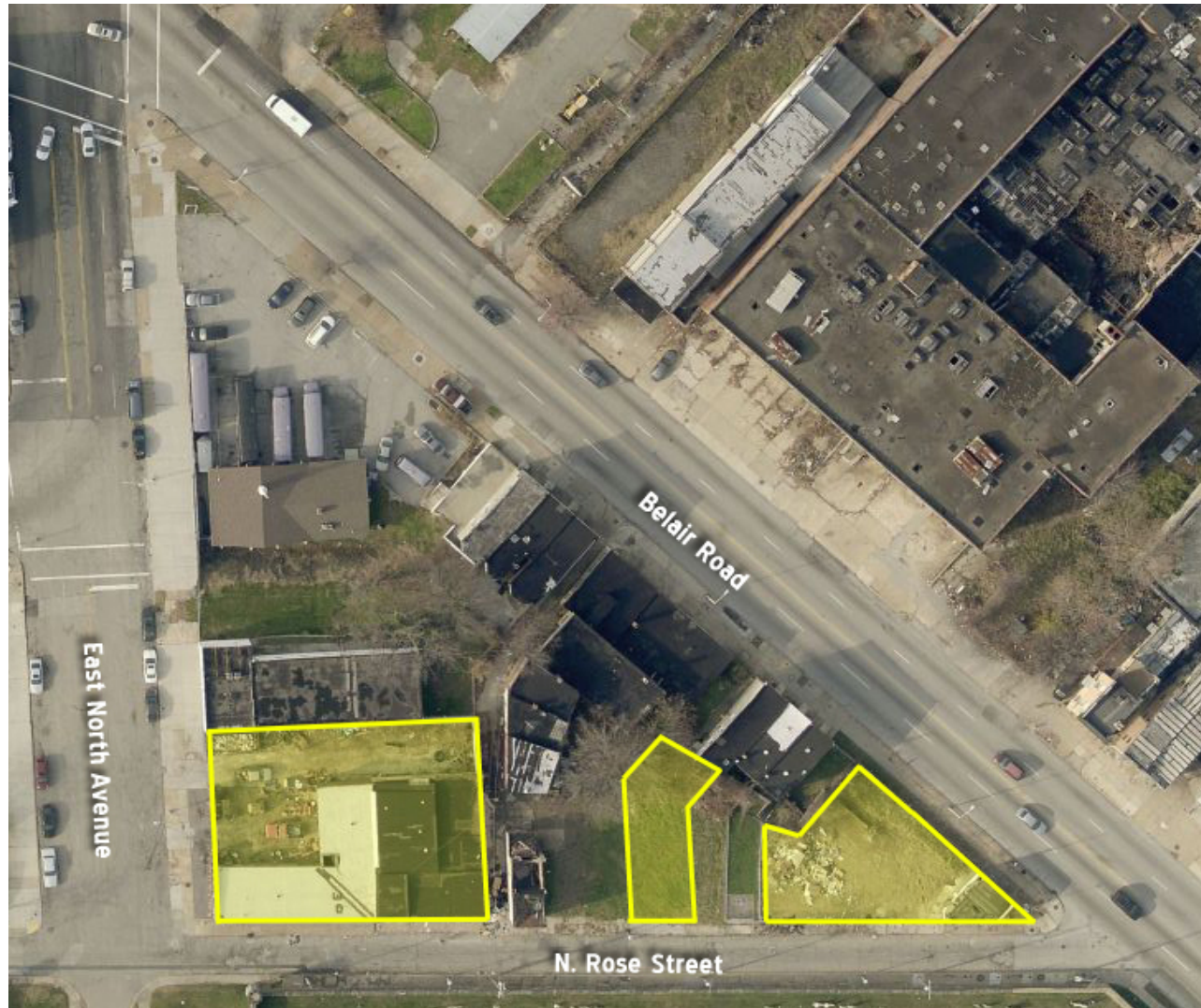
The information contained in this marketing brochure has been obtained from sources we believe to be reliable; however, Trout Daniel & Associates LLC has not verified, and will not verify any of the information contained herein, nor has Trout Daniel & Associates LLC conducted any investigation regarding these matters and makes no warranty or representation whatsoever regarding the accuracy or completeness of the information provided. An agent indicated by an asterisk (*) has a direct or indirect ownership interest in this property.

FOR SALE - WAREHOUSE/OFFICE/ LAND

2434 E. NORTH AVENUE, BALTIMORE, MARYLAND 21213



Aerial



Henry Kornblatt

443.921.9312

hkornblatt@troutdaniel.com

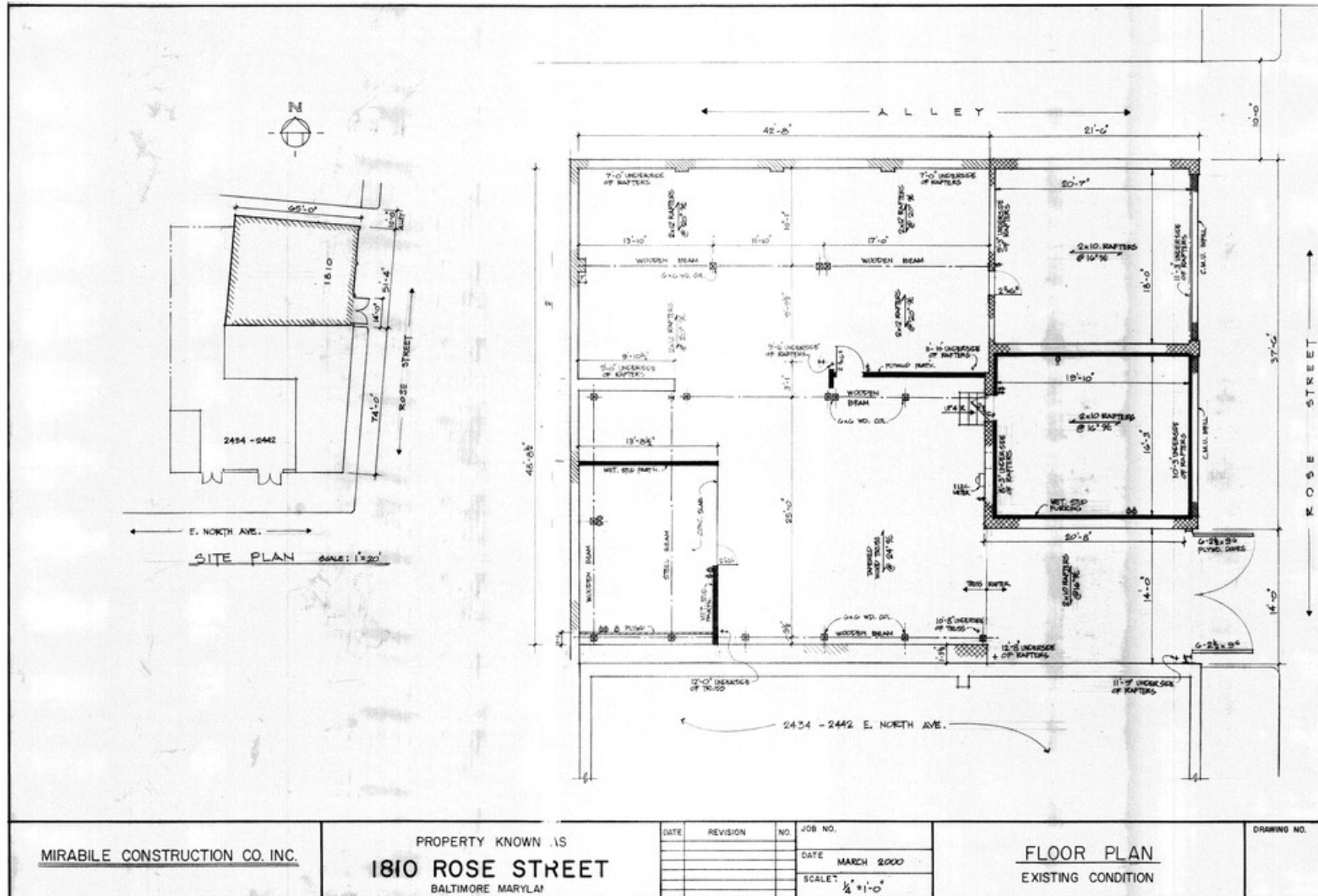
The information contained in this marketing brochure has been obtained from sources we believe to be reliable; however, Trout Daniel & Associates LLC has not verified, and will not verify any of the information contained herein, nor has Trout Daniel & Associates LLC conducted any investigation regarding these matters and makes no warranty or representation whatsoever regarding the accuracy or completeness of the information provided. An agent indicated by an asterisk (*) has a direct or indirect ownership interest in this property.

FOR SALE - WAREHOUSE/OFFICE/ LAND

2434 E. NORTH AVENUE, BALTIMORE, MARYLAND 21213



Floor Plan



Henry Kornblatt
443.921.9312
hkornblatt@troutdaniel.com

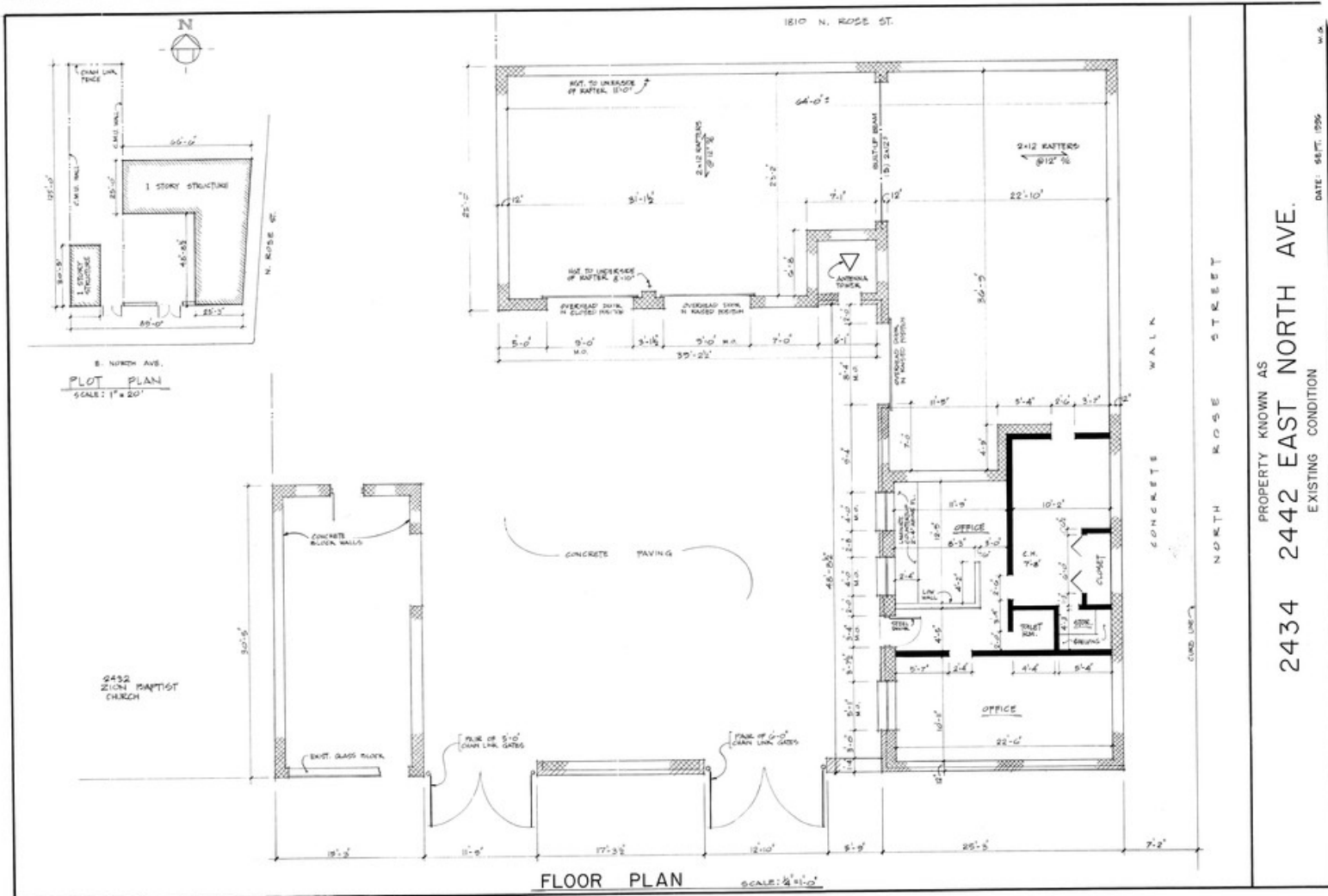
The information contained in this marketing brochure has been obtained from sources we believe to be reliable; however, Trout Daniel & Associates LLC has not verified, and will not verify any of the information contained herein, nor has Trout Daniel & Associates LLC conducted any investigation regarding these matters and makes no warranty or representation whatsoever regarding the accuracy or completeness of the information provided. An agent indicated by an asterisk (*) has a direct or indirect ownership interest in this property.

FOR SALE - WAREHOUSE/OFFICE/ LAND

2434 E. NORTH AVENUE, BALTIMORE, MARYLAND 21213E



Floor Plan



Henry Kornblatt
443.921.9312
hkornblatt@troutdaniel.com

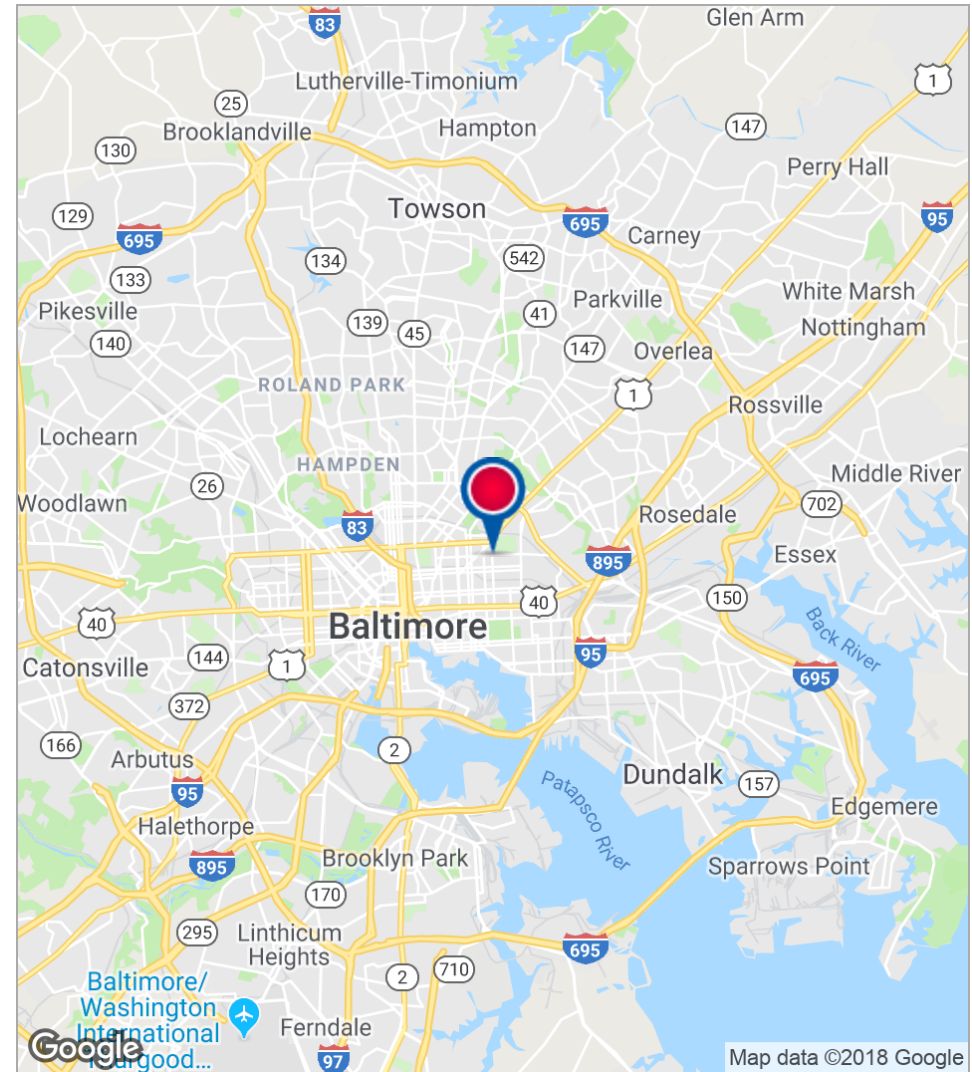
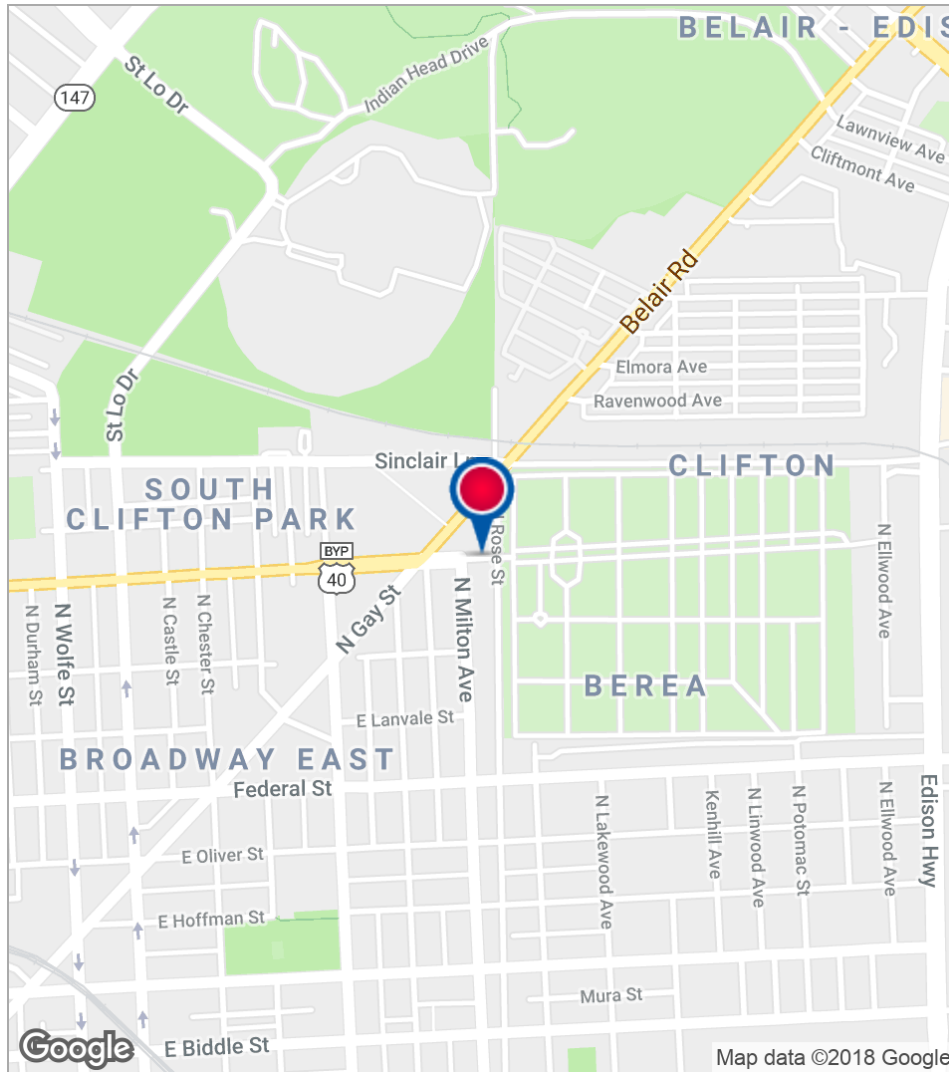
The information contained in this marketing brochure has been obtained from sources we believe to be reliable; however, Trout Daniel & Associates LLC has not verified, and will not verify any of the information contained herein, nor has Trout Daniel & Associates LLC conducted any investigation regarding these matters and makes no warranty or representation whatsoever regarding the accuracy or completeness of the information provided. An agent indicated by an asterisk (*) has a direct or indirect ownership interest in this property.

FOR SALE - WAREHOUSE/OFFICE/ LAND

2434 E. NORTH AVENUE, BALTIMORE, MARYLAND 21213



Location Maps



Henry Kornblatt
443.921.9312
hkornblatt@troutdaniel.com

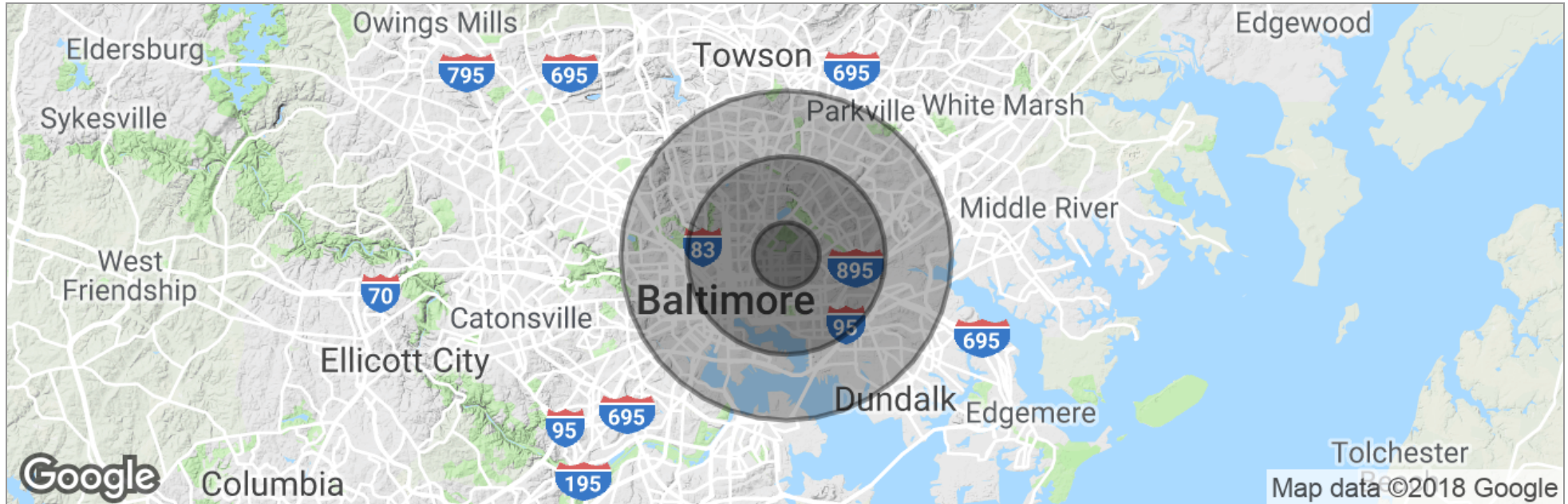
The information contained in this marketing brochure has been obtained from sources we believe to be reliable; however, Trout Daniel & Associates LLC has not verified, and will not verify any of the information contained herein, nor has Trout Daniel & Associates LLC conducted any investigation regarding these matters and makes no warranty or representation whatsoever regarding the accuracy or completeness of the information provided. An agent indicated by an asterisk (*) has a direct or indirect ownership interest in this property.

FOR SALE - WAREHOUSE/OFFICE/ LAND

2434 E. NORTH AVENUE, BALTIMORE, MARYLAND 21213E



Demographics Map



	1 Mile	3 Miles	5 Miles
Total Population	35,120	289,722	584,856
Population Density	11,179	10,247	7,447
Median Age	37.4	34.0	34.7
Median Age (Male)	33.2	32.4	33.0
Median Age (Female)	39.5	34.9	35.8
Total Households	11,727	111,709	228,824
# of Persons Per HH	3.0	2.6	2.6
Average HH Income	\$39,913	\$57,308	\$60,329
Average House Value	\$104,992	\$221,855	\$246,676

* Demographic data derived from 2010 US Census

Henry Kornblatt

443.921.9312

hkornblatt@troutdaniel.com

The information contained in this marketing brochure has been obtained from sources we believe to be reliable; however, Trout Daniel & Associates LLC has not verified, and will not verify any of the information contained herein, nor has Trout Daniel & Associates LLC conducted any investigation regarding these matters and makes no warranty or representation whatsoever regarding the accuracy or completeness of the information provided. An agent indicated by an asterisk (*) has a direct or indirect ownership interest in this property.