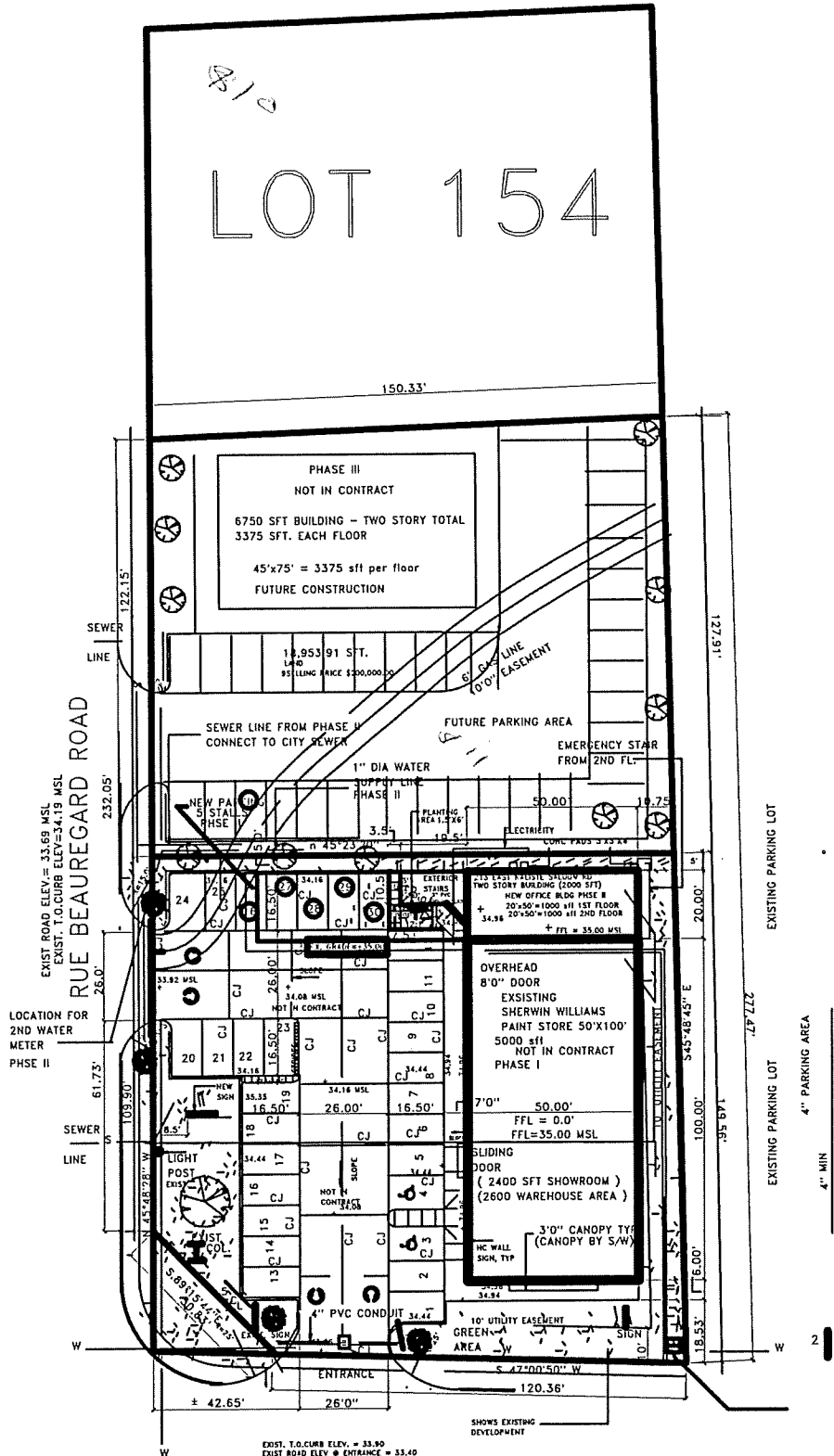


LOT 154



TOTAL BUILDING AREA = 5,000 SFT (PHASE I)+ 2000 SFT(PHASE II) = 7000 SFT
(PHASE II IS A TWO STORY NEW BUILDING, 1000 SFT EACH FLOOR)
TOTAL PARKING = 19 CARS (PHASE I)+ 11 (PHASE II) = 30
FLOOD ZONE "C"
PROPERTY ZONED "BG"

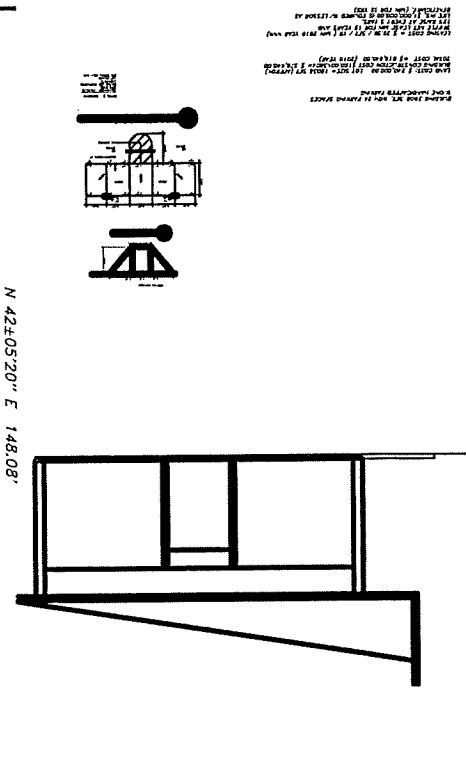
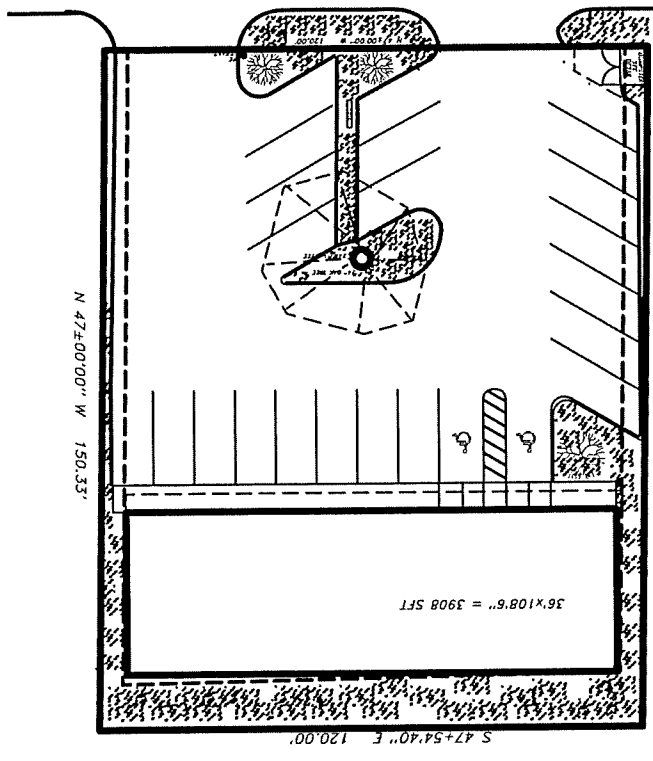
NUMBER OF NEW SHRUBS = 4

2
1983
1984

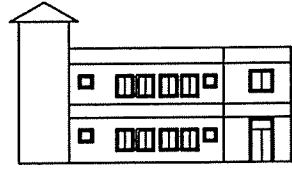
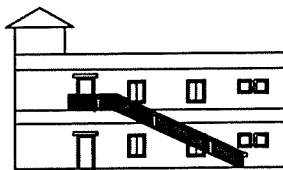
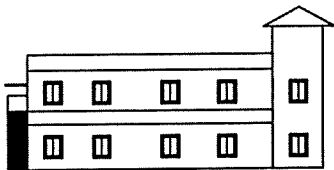
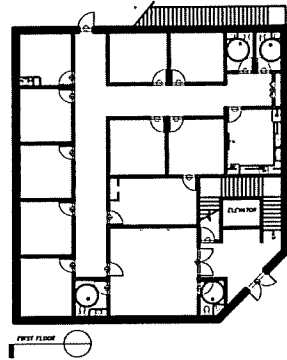
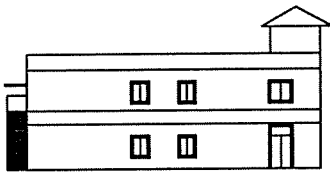
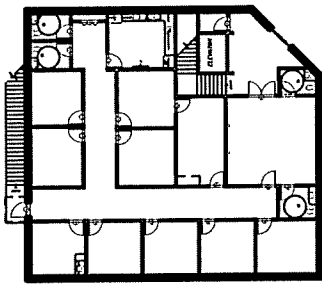
1985
1986
1987
1988
1989
1990
1991
1992
1993
1994
1995
1996
1997
1998
1999
2000
2001
2002
2003
2004
2005
2006
2007
2008
2009
2010
2011
2012
2013
2014
2015
2016
2017
2018
2019
2020

31700
31701
31702
31703
31704
31705
31706
31707
31708
31709
31710
31711
31712
31713
31714
31715
31716
31717
31718
31719
31720
31721
31722
31723
31724
31725
31726
31727
31728
31729
31730
31731
31732
31733
31734
31735
31736
31737
31738
31739
31740
31741
31742
31743
31744
31745
31746
31747
31748
31749
31750
31751
31752
31753
31754
31755
31756
31757
31758
31759
31760
31761
31762
31763
31764
31765
31766
31767
31768
31769
31770
31771
31772
31773
31774
31775
31776
31777
31778
31779
31780
31781
31782
31783
31784
31785
31786
31787
31788
31789
31790
31791
31792
31793
31794
31795
31796
31797
31798
31799
31800

OFFICE BUILDING #3
154 RUE BEAREGAARD ROAD
LAZARVILLE, LA 70001



5-ONE ARCHITECTURE
1501 PINE ST. SUITE 100
HOUSTON, TEXAS 77002
TEL: 713-521-1111
WWW.5-ONEARCHITECTURE.COM



SANGAM CONSTRUCTION INC.
 211 EAST KALISTE SALOOM ROAD
 LAFAYETTE, LA 70508

SANGAM CONSTRUCTION INC.
 211 E. KALISTE SALOOM RD.
 LAFAYETTE, LOUISIANA 70508
 TEL: 337-233-7170
 FAX: 337-233-7170

NO. 123456

PROJECT NO. 123456
 SHEET NO. 0

NO. 123456