

FOR SALE

MONTGOMERY MEWS OFFICE CONDOS

4300 Montgomery Avenue, Suite 302, Bethesda, MD 20814

1,100 SF Commercial Condo | \$519,000

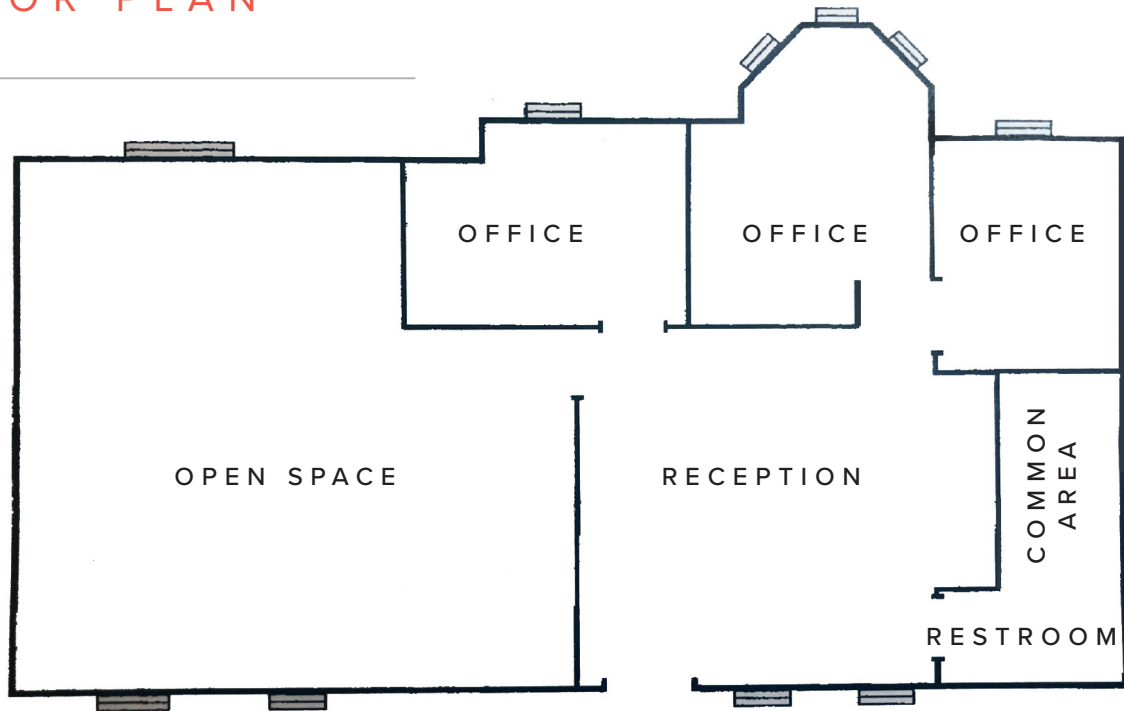




PROPERTY HIGHLIGHTS

- Outstanding Bethesda location within walking distance to Metro
- Convenient covered garage parking
- Free visitor parking
- Beautifully landscaped common areas
- Professional Property Management by Fitzgerald Properties

FLOOR PLAN



UNIT HIGHLIGHTS

- Freshly painted and in move-in ready condition
- Flexible layout featuring three private offices and a large open area perfect for workstations
- Third floor Unit with western views of Bethesda
- Striking hardwood laminate floors throughout
- Attractive drywall ceilings throughout
- Energy efficient double-paned operable windows
- Recently installed dedicated HVAC system
- State of the art Electronic Security System
- Two reserved and marked parking spaces available in the Building garage

PROPERTY PHOTOS





MONTGOMERY MEWS OFFICE CONDOS

4300 Montgomery Avenue, Suite 302, Bethesda, MD 20814

PLEASE CONTACT:

Andrew M. Cole

T +1 301 215 4120

C +1 301 442 3478

andy.cole@cbre.com

CBRE

7501 Wisconsin Avenue

Suite 820E

Bethesda, MD 20814

© 2020 CBRE, Inc. All rights reserved. This information has been obtained from sources believed reliable, but has not been verified for accuracy or completeness. You should conduct a careful, independent investigation of the property and verify all information. Any reliance on this information is solely at your own risk. CBRE and the CBRE logo are service marks of CBRE, Inc. All other marks displayed on this document are the property of their respective owners, and the use of such logos does not imply any affiliation with or endorsement of CBRE. Photos herein are the property of their respective owners. Use of these images without the express written consent of the owner is prohibited.