



# THE FORUM

AT ATHENS WAY

210-220 ATHENS WAY | NASHVILLE, TENNESSEE



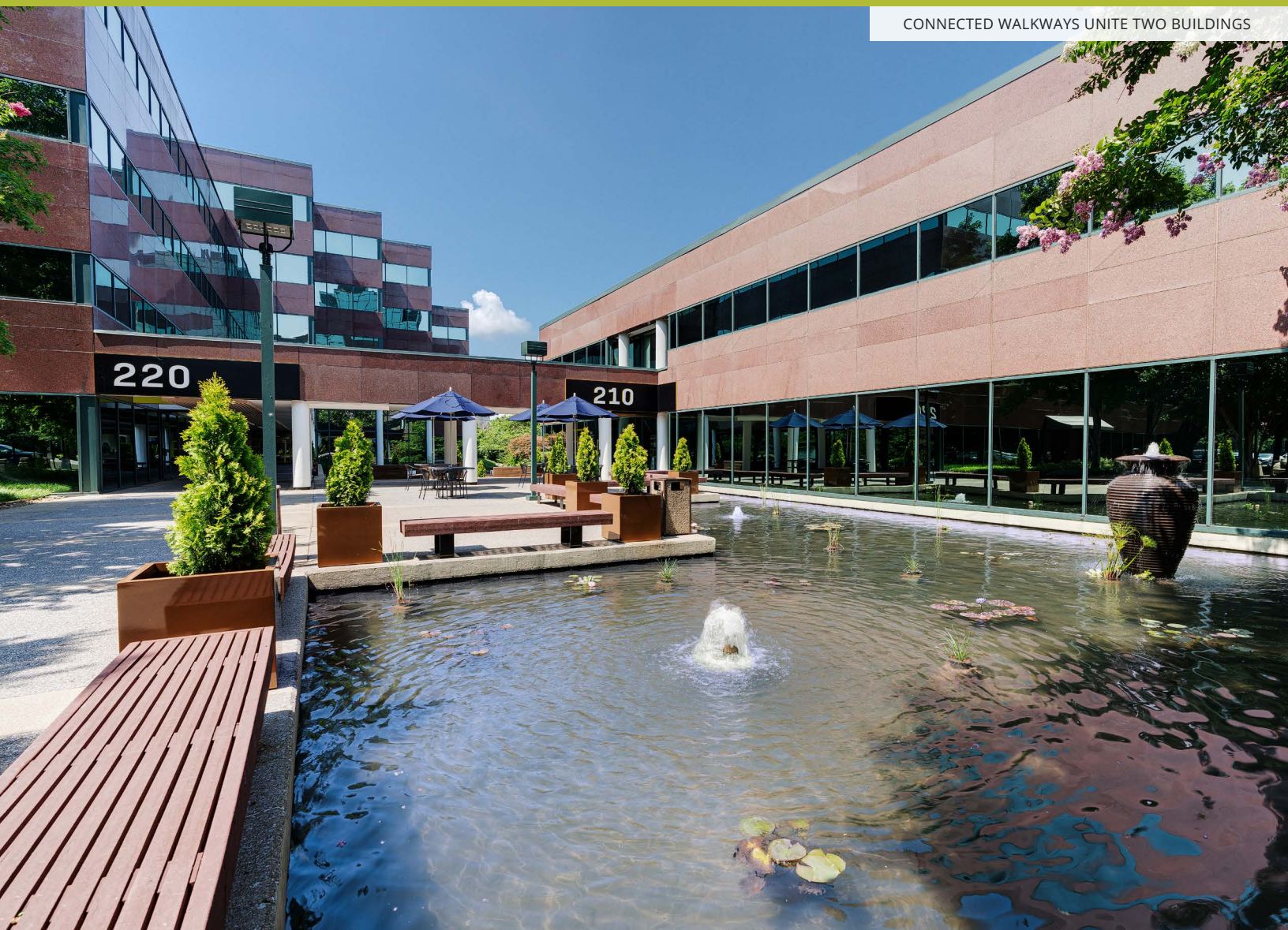
# BOUNDLESS CONNECTION

Connection. It's what Nashville is all about, and The Forum at Athens Way is no exception. Strategically located between the arc of the Cumberland River and historic Downtown, The Forum is a two-building workplace oasis fitted for corporate professionals and creative companies alike.

Nine minutes to Downtown, five minutes to Germantown and walkable to the Cumberland River Greenway, experience boundless connection at The Forum.

THOUGHTFUL INTERIOR  
RENOVATIONS AND  
AMENITY ENHANCEMENTS  
DELIVERED Q3 2020

CONNECTED WALKWAYS UNITE TWO BUILDINGS







# MAXIMIZE OFFICE HOURS

Linked by common pathways surrounding a scenic lake, this is your license to a welcomed retreat from the haste of city work-life. Under new ownership with a compelling amenity package and renovations completed in 2020, The Forum is a connector of industries, ideas and culture.

## TWO BUILDING CAMPUS

156,280 SF



Exterior building signage available at 210 Athens Way



4/1,000 parking ratio



On-site cafe for convenient lunches



On-site fitness center, showers and locker rooms



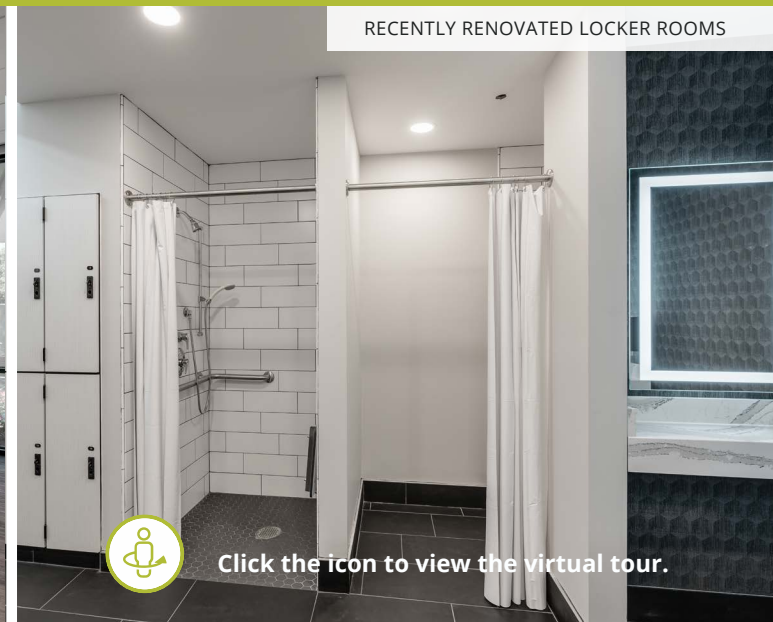
On-site property management office

UPDATED FITNESS CENTER



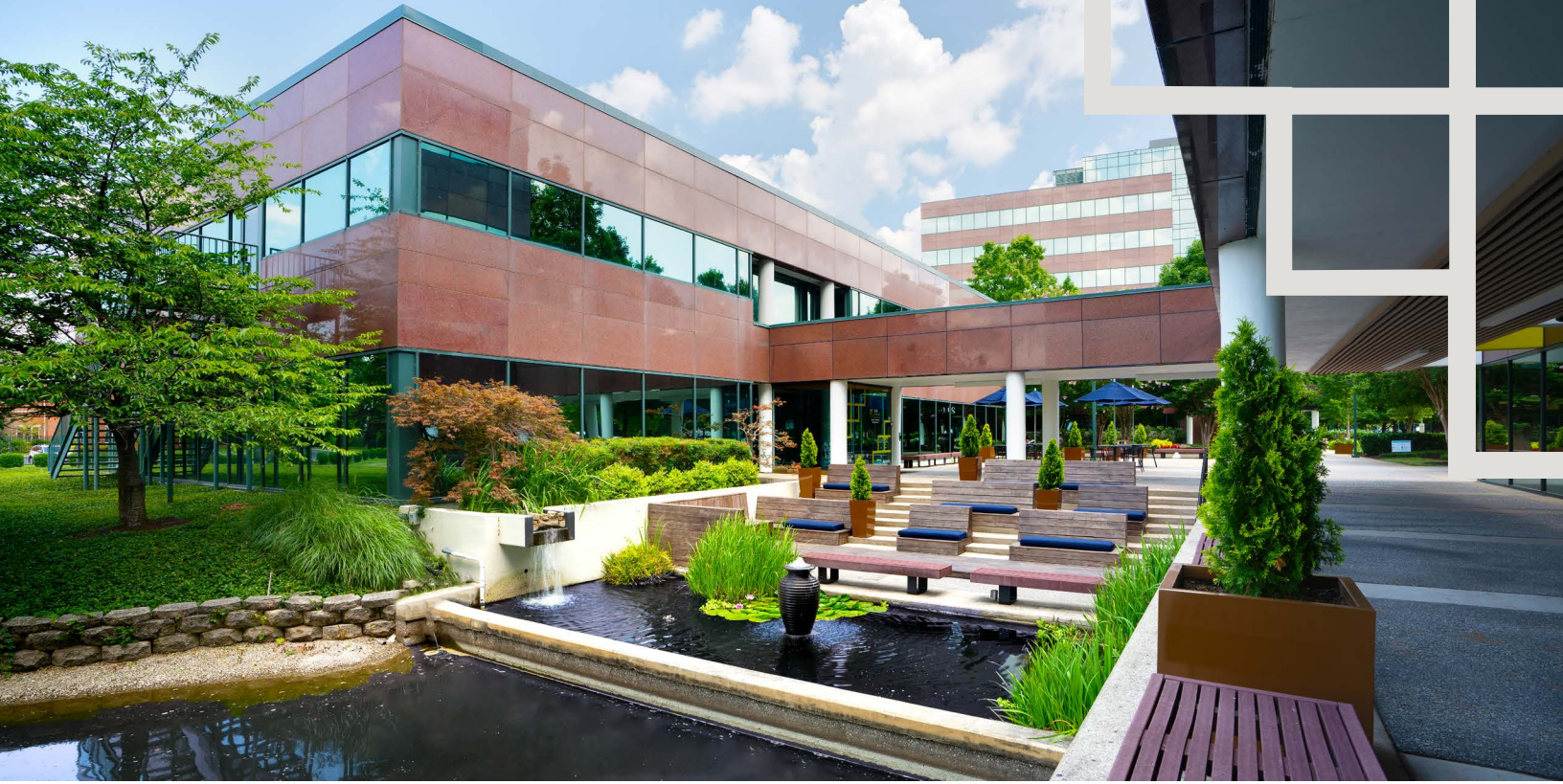
Click the icon to view the virtual tour.

RECENTLY RENOVATED LOCKER ROOMS



Click the icon to view the virtual tour.





# DELIVERED Q3 2020



Click the icon to view the virtual tour.

## THOUGHTFUL INTERIOR RENOVATIONS AND AMENITY ENHANCEMENTS



COVID-19 informational standing signs placed in common areas



Antibacterial stands have been installed in common areas



Additional janitorial added to clean all common area touch points throughout the day



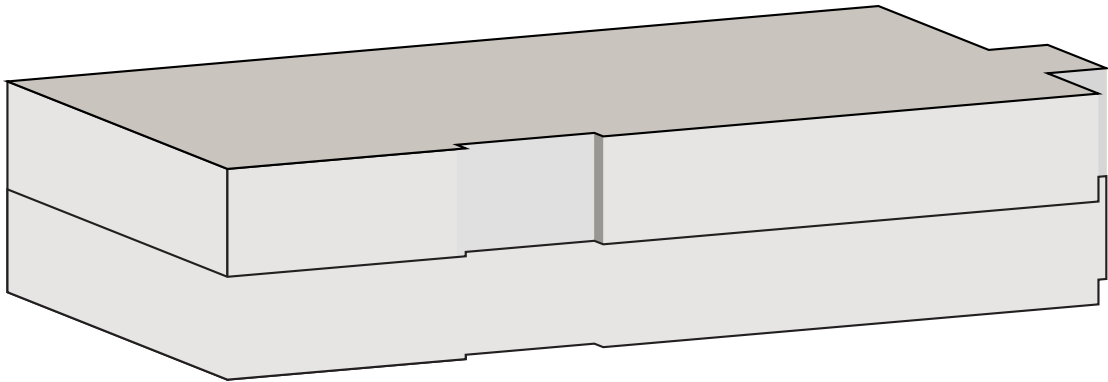
# AVAILABILITY



## 210 ATHENS WAY

LEASED

210 Athens Way allows your company to occupy the entire building creating a rare opportunity for a corporate office seeking a flagship space.



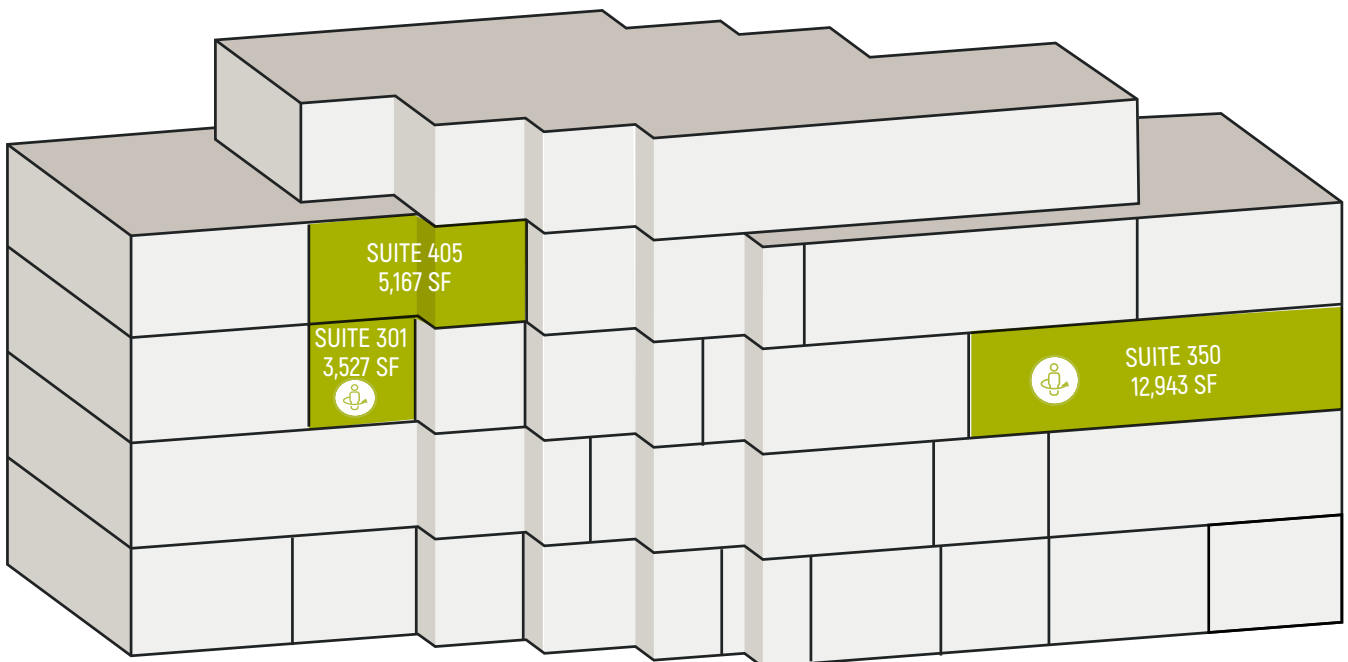
## 220 ATHENS WAY



Click the icon below to view the virtual tour.

RANGING FROM 3,527 - 12,943 RSF

With efficient and spacious suites available and the unbound potential to create a space that extends your company culture — experience an open track for progress and a pathway forward at The Forum.







## THE FORUM AT ATHENS WAY



# SEAMLESS ACCESS

Located in a transformative corridor adjacent to Nashville's fastest-growing neighborhoods with prime access to I-65, I-24 and I-40, navigate a campus tailored to your workday priorities.

## DRIVE TIMES

### > 9 MINUTES

To Downtown via 2<sup>nd</sup> Avenue N. and 3<sup>rd</sup> Avenue N.

### > 5 MINUTES

To Germantown via 3<sup>rd</sup> Avenue N.

## WALKABLE




To The Cumberland River Greenway via Athens Way



9 Metrocenter Bus Transit stops



**THE FORUM**  
AT ATHENS WAY

-  Cumberland River Greenway Trailheads
-  Cumberland River Access Points
-  Metrocenter Bus Route

# AREA AMENITIES

Conveniently connected to Nashville's vibrant neighborhood pockets, maximize your workday with the essentials you need to thrive.

## GROCERY, GAS & SERVICES

- 1** Enterprise Rent-A-Car
- 2** Kroger
- 3** International Grocery Store

## LODGING

- 1** Candlewood Suites
- 2** Springhill Suites by Marriott
- 3** Fairfield Inn & Suites by Marriott
- 4** Germantown Inn

## DINING

- 1** Chick-fil-A/Subway
- 2** Moniques Homestyle Cooking
- 3** Jersey Mikes Subs / Smoothie King
- 4** Wise Burger
- 5** Starbucks
- 6** 5<sup>th</sup> & Taylor
- 7** Rolf and Daughters
- 8** Butchertown Hall
- 9** 312 Pizza Company
- 10** City House
- 11** Henrietta Red
- 12** SILO Germantown

\*Less than a .5 mile walk from the closest Metrocenter Bus Stop via Athens Way

# THE FORUM

AT ATHENS WAY

210 ATHENS WAY  
220 ATHENS WAY  
NASHVILLE, TENNESSEE

## ROBBY DAVIS

Managing Director  
615.301.2920  
Robby.Davis@cushwake.com

## CHARLIE GIBSON, CCIM

Managing Director  
615.301.2820  
Charlie.Gibson@cushwake.com



**CUSHMAN &  
WAKEFIELD**

Cushman & Wakefield, © 2019. No warranty or representation, express or implied, is made to the accuracy or completeness of the information contained herein, and same is submitted subject to errors, omissions, change of price, rental or other conditions, withdrawal without notice, and to any special listing conditions imposed by the property owner(s). As applicable, we make no representation as to the condition of the property (or properties) in question.

A STRATEGIC ACQUISITION OF:

**ALBANY ROAD**

REAL ESTATE PARTNERS