

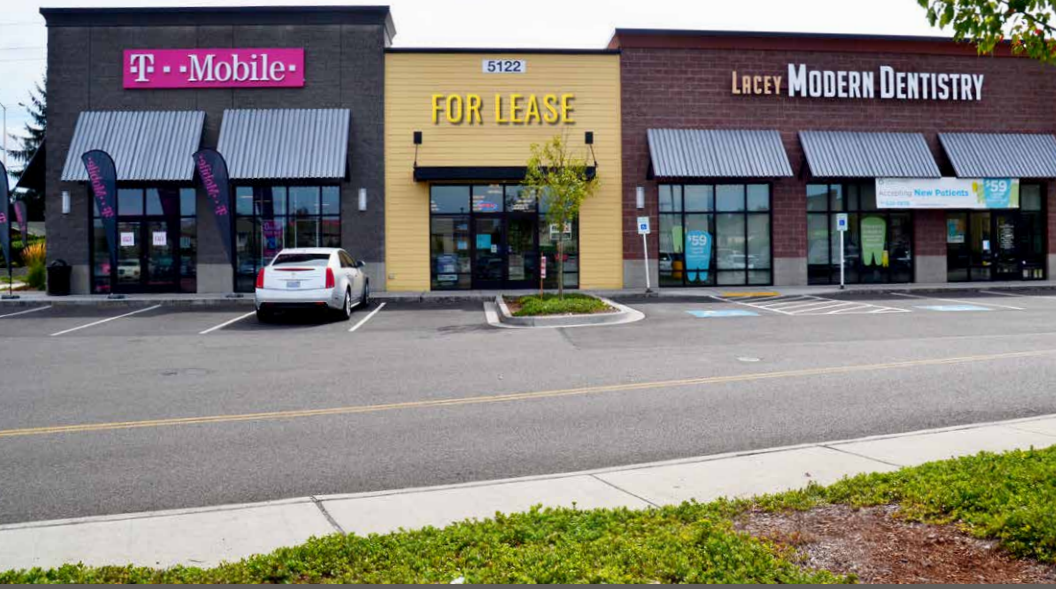


FOR LEASE

5123 Yelm Highway SE
Lacey, WA 98503



Pad F Drive Thru Available



SUMMERWALK VILLAGE

First Western Properties—Tacoma Inc. | 253.472.0404
6402 Tacoma Mall Blvd, Tacoma, WA 98409 | fwp-inc.com

5123 YELM HIGHWAY SE:

SUITE 5122-C: 1,200 SF \$30 PSF, PLUS NNN

PAD B: +/- 2,087 SF \$30-36 PSF, PLUS NNN
NATIONAL QSR PENDING

PAD E: 1,200-7,200 SF \$30 PSF, PLUS NNN

PAD F: 800-2,500 SF CALL FOR DETAILS
DRIVE-THRU OPTION

NOW ANNOUNCING:



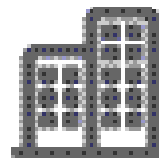
MEXICAN GRILL



Population



Average HH Income



Daytime Population

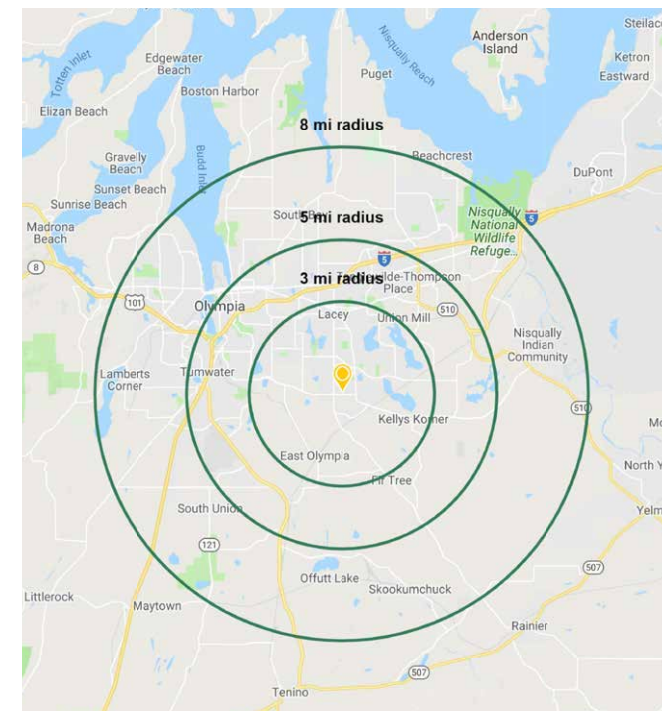
Regis - 2018

	Population	Average HH Income	Daytime Population
Mile 3	64,335	\$90,504	31,638
Mile 5	129,230	\$88,682	105,357
Mile 8	199,117	\$87,515	167,794

EXISTING TENANTS



NEARBY TENANTS



SUMMARY



LOCATION AERIAL

NATIONAL QSR LEASE PENDING

COMING SOON

PAD B



SUITE 5122-C

PAD F

PAD E

2,087 SF AVAILABLE



21,000 CPD - YELM HWY SE

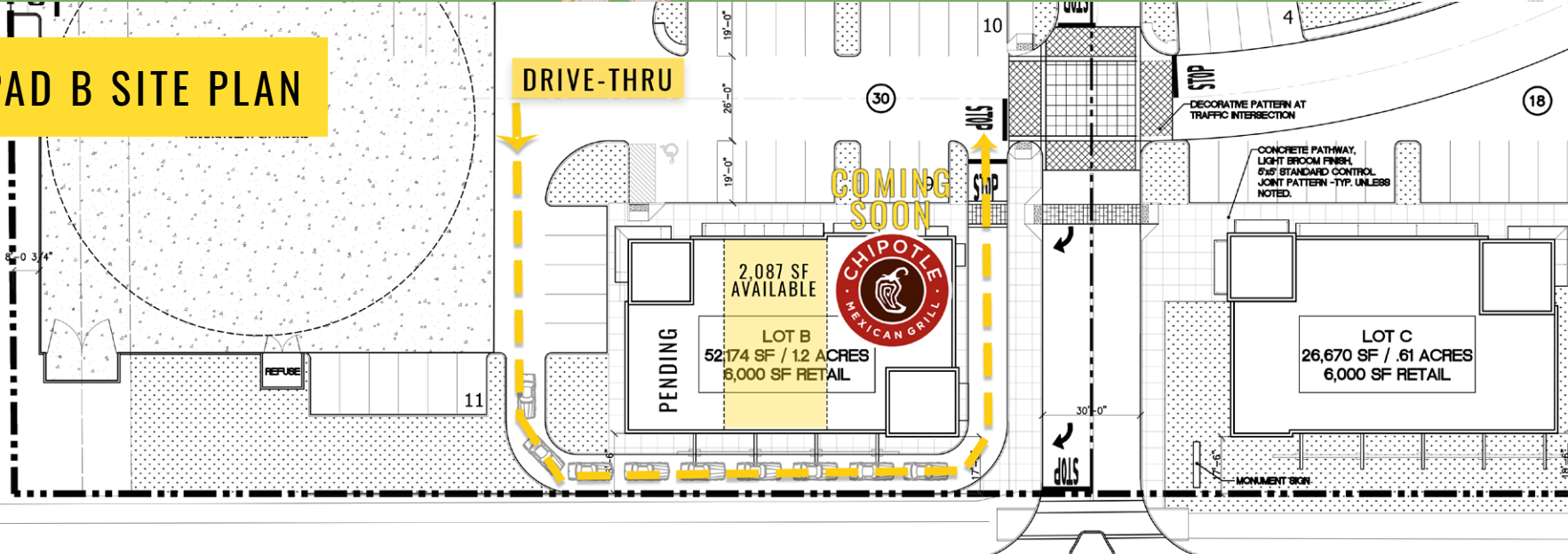
PARKSIDE DRIVE SE



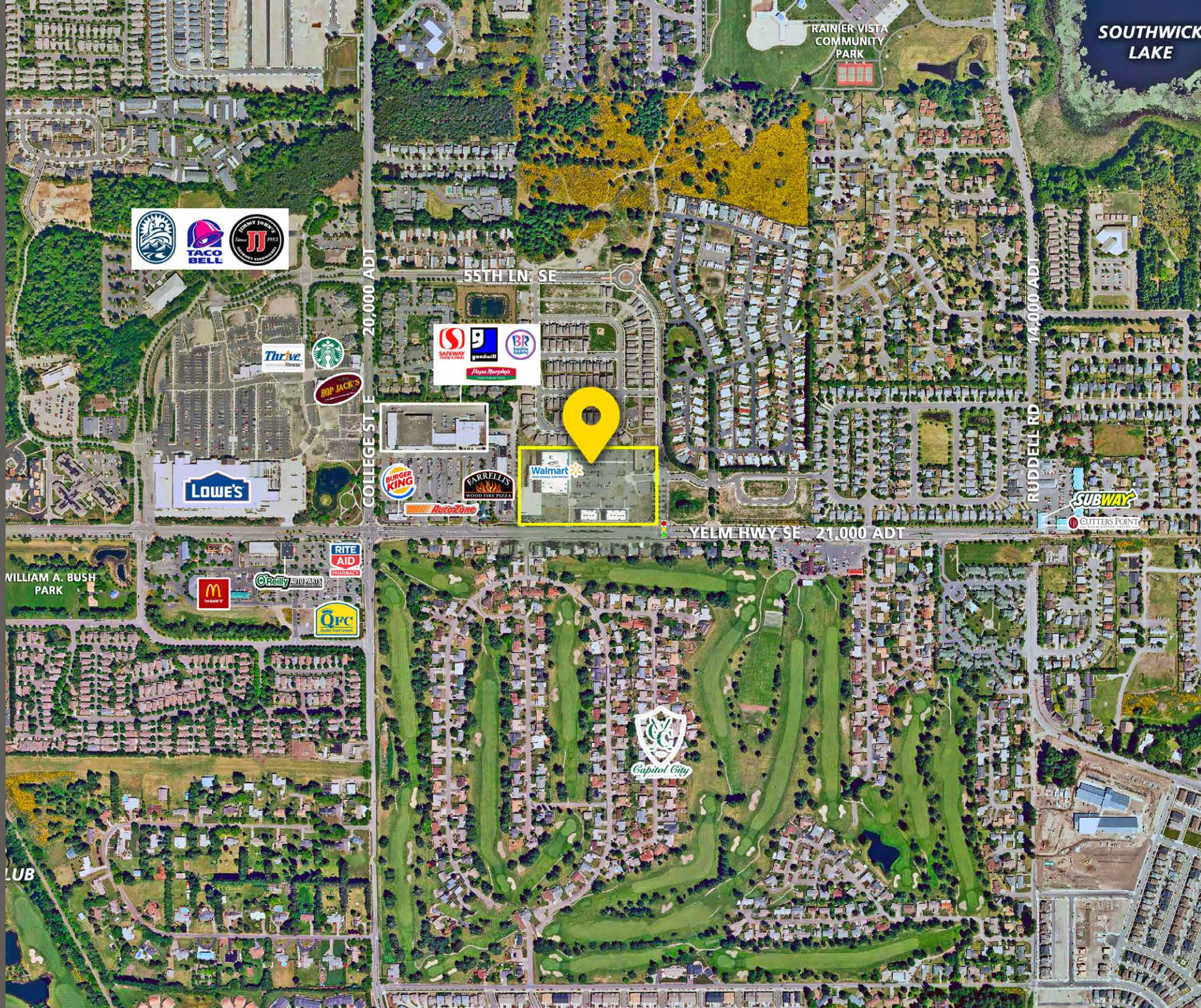
SITE PLAN



PAD B SITE PLAN



LOCATION AERIAL



SOUTH SWICKEWAY RD 14,000 ADT

RAINIER VISTA COMMUNITY PARK



55TH LN. SE



LOWE'S



YELM HWY SE 21,000 ADT

SUBWAY

GLITTERS POINT

WILLIAM A. BUSH PARK



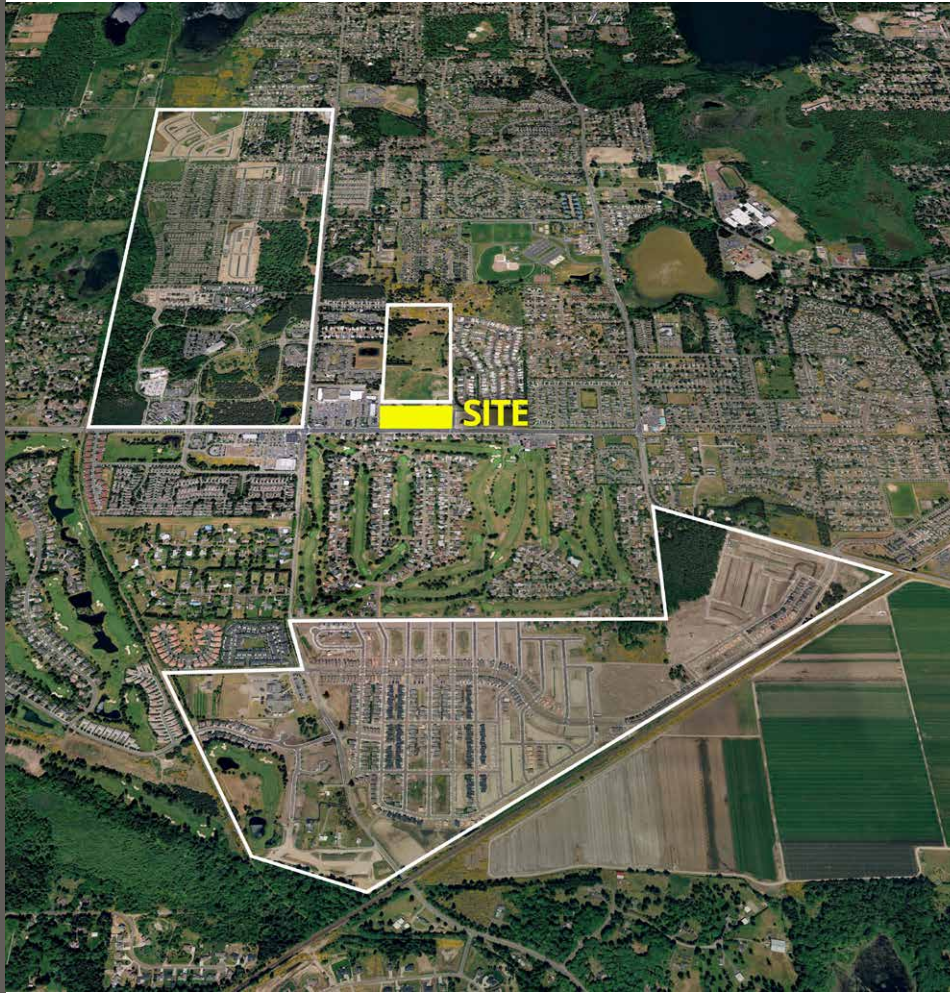
REALLY GOOD PIZZA

RITE AID



CLUB

POPULATION GROWTH



2006
POPULATION: 35,527



2017
POPULATION: 40,000



LACEY, WA situated on the southern tip of the Puget Sound offering unlimited opportunities for outdoor recreation with the adjoining 3,7000-acre Nisqually National Wildlife Refuge. Lacey residents are highly educated, community-oriented, and enjoy the highest median household income of any city in Thurston County. Businesses have taken notice and economic development has flourished. Six times over the last eight years, quarterly employment growth has ranked within the top 15% of the 325 largest US metropolitan counties.

TACOMA | KIRKLAND | PORTLAND | SEATTLE



RETAIL FOCUSED. RESULTS DRIVEN.

CARRIE WALKER

253.284.3644
carrie@firstwesternproperties.com



First Western Properties—Tacoma Inc. | 253.472.0404
6402 Tacoma Mall Blvd, Tacoma, WA 98409 | fwp-inc.com

© First Western Properties, Inc. DISCLAIMER: The above information has been secured from sources believed to be reliable, however, no representations are made to its accuracy. Prospective tenants or buyers should consult their professional advisors and conduct their own independent investigation. Properties are subject to change in price and/or availability without notice.